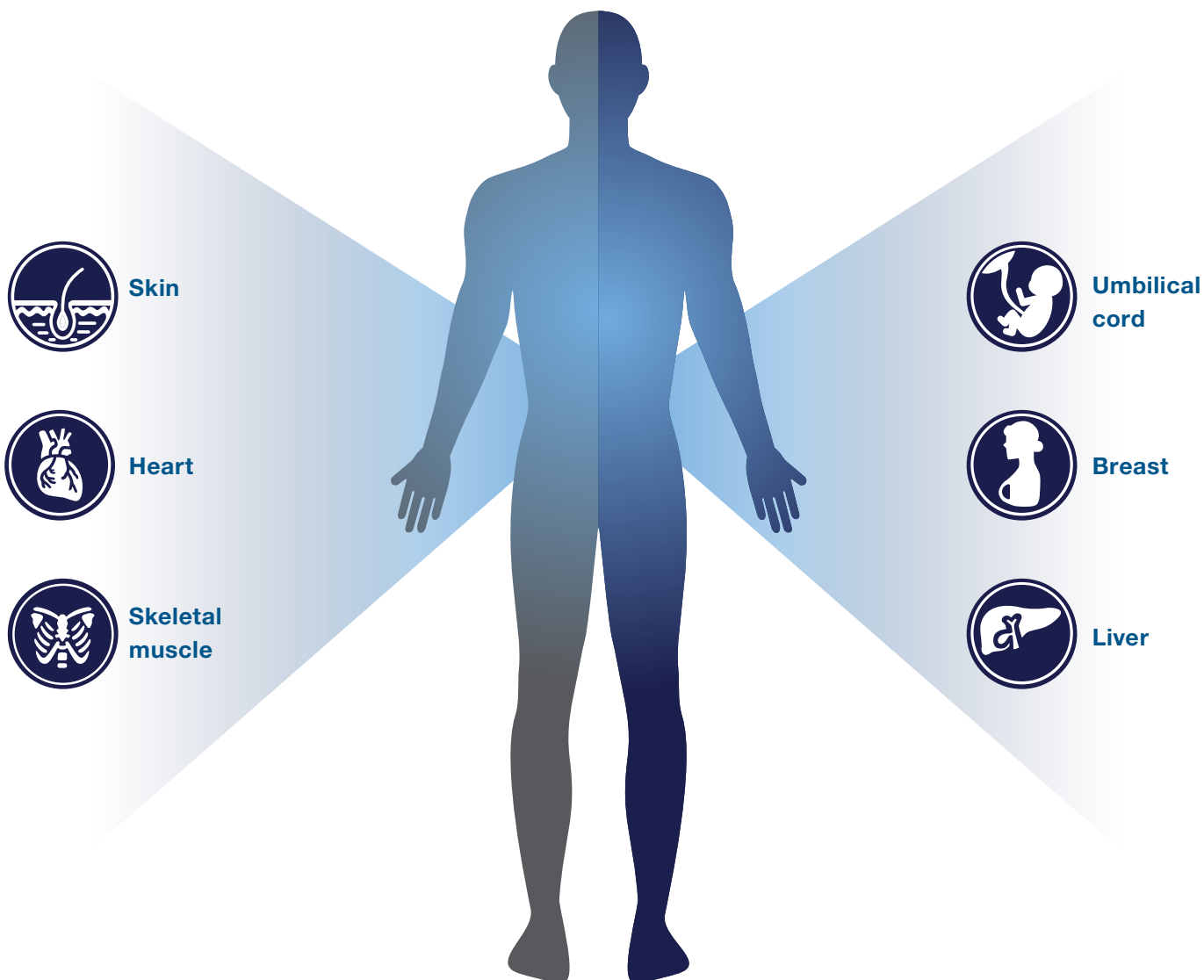


Optimized primary cells, media, and matrices—a winning combination

Perform your research in tissue-relevant systems backed by Gibco quality products

Check out our comprehensive portfolio of **Gibco™ primary cell culture products**, which allow you to more closely mimic *in vivo* states and generate relevant data.



Here are some common Thermo Scientific™ and Gibco™ products we offer:

Part of the body	Cell type	Medium	Supplement	Plastic	Matrices (or attachment factor)	Dissociation
Skin (neonatal and adult)	<ul style="list-style-type: none"> • Epidermal keratinocytes • Epidermal keratinocytes, pooled (neonatal) 	<ul style="list-style-type: none"> • EpiLife™ medium • M154 • Keratinocyte SFM • Defined Keratinocyte SFM 	<ul style="list-style-type: none"> • HKGS • EDGS • S7 (defined and animal origin-free) 	<ul style="list-style-type: none"> • Nunclon™ Delta Dishes and Plates • Nunc™ Collagen I-Coated Plates • Nunc™ cell scrapers 	<ul style="list-style-type: none"> • Coating matrix—used in conjunction with Supplement S7 or EDGS when growing human keratinocytes to enhance attachment, growth, and population doublings 	<ul style="list-style-type: none"> • TrypLE™ Select enzymes • Trypsin-EDTA solutions
	<ul style="list-style-type: none"> • Melanocytes 	<ul style="list-style-type: none"> • M254 	<ul style="list-style-type: none"> • HMGS (for neonatal HEM) • HMGS-2 (for adult HEM) 		<ul style="list-style-type: none"> • Collagen I 	
	<ul style="list-style-type: none"> • Dermal fibroblasts 	<ul style="list-style-type: none"> • M106 	<ul style="list-style-type: none"> • LSGS 			
Heart	<ul style="list-style-type: none"> • Aortic smooth muscle • Coronary smooth muscle 	<ul style="list-style-type: none"> • M231 	<ul style="list-style-type: none"> • SMGS (for growth) • SMDS (to enhance differentiation) 	<ul style="list-style-type: none"> • Nunclon Delta Dishes and Plates 	<ul style="list-style-type: none"> • Collagen I protein • Collagen I protein 	
	Skeletal muscle	<ul style="list-style-type: none"> • Skeletal myoblast 	<ul style="list-style-type: none"> • DMEM 	<ul style="list-style-type: none"> • 2% Horse Serum 	<ul style="list-style-type: none"> • Nunc Collagen I-Coated Plates • Nunc cell scrapers 	
Umbilical cord	<ul style="list-style-type: none"> • Umbilical vein endothelial • Umbilical vein endothelial, pooled 	<ul style="list-style-type: none"> • M200 • M200PRF 	<ul style="list-style-type: none"> • LVES 		<ul style="list-style-type: none"> • Vitronectin™ protein • rhLaminin • Attachment factors • Coating Matrix Kit 	
	Breast	<ul style="list-style-type: none"> • Mammary epithelial 	<ul style="list-style-type: none"> • M171 • HuMEC Ready Medium 	<ul style="list-style-type: none"> • MEGS • HuMEC Supplement Kit 	<ul style="list-style-type: none"> • Nunclon Delta Dishes and Plates • Nunc cell scrapers 	
Liver*	<ul style="list-style-type: none"> • Suspension hepatocytes 	<ul style="list-style-type: none"> • Hepatocyte Thaw Medium • CHRM • Williams' E Medium 	<ul style="list-style-type: none"> • Hep maintenance supplement pack 			
	<ul style="list-style-type: none"> • Pooled cryo hepatocytes 	<ul style="list-style-type: none"> • Hepatocyte Thaw Medium • CHRM • CHPM • Williams' E Medium 	<ul style="list-style-type: none"> • HepExtend™ Supplement • Hep plating supplement pack • Hep maintenance supplement pack 	<ul style="list-style-type: none"> • Gibco collagen I-coated plates • Nunc cell scrapers 	<ul style="list-style-type: none"> • Geltrex™ matrices • Collagen I protein 	
	<ul style="list-style-type: none"> • Plateable hepatocytes 	<ul style="list-style-type: none"> • Hepatocyte Thaw Medium • CHRM • Williams' E Medium 	<ul style="list-style-type: none"> • Hep maintenance supplement pack 			
	<ul style="list-style-type: none"> • Kupffer cells 	<ul style="list-style-type: none"> • Advanced DMEM • RPMI 1640 medium 	<ul style="list-style-type: none"> • Hepatocyte maintenance supplements (EXCLUDE dexamethasone) • Fetal Bovine Serum (FBS) 		<ul style="list-style-type: none"> • Collagen I (no overlay) 	

* If you'd like to inquire about any liver products not listed here, or to find out about custom projects, go to hepaticproducts@thermofisher.com

Ordering information

Product	Cat. No.
Skin	
Epidermal keratinocytes and epidermal keratinocytes, pooled (neonatal)	
Human Epidermal Keratinocytes, neonatal (HEKn)	C0015C
Human Epidermal Keratinocytes, adult (HEKa)	C0055C
EpiLife medium	MEPI500CA
Medium 154	M154500
Keratinocyte SFM	17005042
Human Keratinocyte Growth Supplement (HKGS)	S0015
EpiLife Defined Growth Supplement (EDGS)	S0125
Supplement S7	S0175
Melanocytes	
Human Epidermal Melanocytes, neonatal, lightly pigmented donor, (HEMn-LP)	C0025C
Human Epidermal Melanocytes, neonatal, moderately pigmented donor, (HEMn-MP)	C1025C
Human Epidermal Melanocytes, neonatal, darkly pigmented donor, (HEMn-DP)	C2025C
Medium 254	M254500
Human Melanocyte Growth Supplement (HMGS)	S0025
Human Melanocyte Growth Supplement (HMGS) 2	S0165
Dermal fibroblasts	
Dermal Fibroblasts, neonatal	C0045C
Dermal Fibroblasts, adult	C0135C
Medium 106	M106500
Low Serum Growth Supplement (LSGS)	S00310
Heart	
Aortic Smooth Muscle	C0075C
Coronary Smooth Muscle	C0175C
Medium 231	M231500
Smooth Muscle Growth Supplement (SMGS)	S00725
Smooth Muscle Differentiation Supplement (SMDS)	S0085

Product	Cat. No.
Skeletal muscle	
Skeletal Myoblast	A12555
DMEM, low glucose, pyruvate	11885084Y
2% Horse Serum	16050130
Umbilical cord	
Human Umbilical Vein Endothelial Cells (HUVEC)	C0035C
Human Umbilical Vein Endothelial Cells, HUVEC Pooled, (1 x 10 ⁶ cells)	C01510C
Medium 200	M200500
Large Vessel Endothelial Supplement (LVES)	A1460801
Breast	
Mammary Epithelial	A10565
Medium 171	M171500
Mammary Epithelial Growth Supplement (MEGS)	S0155
HuMEC Ready Media	12752-010
HuMEC Supplement Kit	12755013
Liver	
HEP10, Pooled Human Cryopreserved Hepatocytes	HMCS10
Suspension Hepatocytes	HMCS1S
Human Plateable Hepatocytes, 5-Donor	HMCPP5
Human Plateable Hepatocytes, Transporter Qualified	HMCPTS
Hepatocyte Thaw Medium	CM7500
Cryopreserved Hepatocyte Recovery Medium (CHRM)	CM7000
Cryopreserved Hepatocyte Plating Medium (CHPM)	CM9000
Williams' E Medium	A1217601
HepExtend Supplement	A2737501
Primary Hepatocyte Thawing and Plating Supplements	CM3000
Primary Hepatocyte Maintenance Supplements	CM4000
Kupffers	HUKCCS
Advanced DMEM	12491015
Fetal Bovine Serum, Certified, US Origin (FBS)	16000
RPMI 1640 Medium, GlutaMAX, HEPES	72400047

Ordering information (continued)

Product	Cat. No.
Plastics	
Nunclon Delta EasYDish 35 mm	150460
Nunclon Delta EasYDish 60 mm	150462
Nunclon Delta EasYDish 100 x 15 mm	150464
Nunclon Delta EasYDish 100 x 20 mm	150466
Nunclon Delta EasYDish 150 x 20 mm	150468
Nunclon Delta 6-Well Multidish	140675
Nunclon Delta 12-Well Multidish	150628
Nunclon Delta 24-Well Multidish	142475
Nunclon Delta 48-Well Multidish	150687
Nunclon Delta 96-Well Microplate	167008
Nunclon Delta Edge 2.0 96-Well Microplate	167425
Nunc Collagen I-Coated 6-Well Multidish	152034
Nunc Collagen I-Coated 96-Well Microplate	152038
Nunc PDL-Coated 6-Well Multidish	152035
Nunc PDL-Coated 96-Well Microplate	152039
Nunc cell scraper, 23 cm, small	179693
Nunc cell scraper, 32 cm, large	179707
Gibco Collagen I-Coated 24-Well	A1142802
Gibco Collagen I-Coated 96-Well	A1142803

Product	Cat. No.
Matrices	
rhLaminin	A29249
Geltrex LDEV-Free Reduced Growth Factor Basement Membrane Matrix	A1413202
Collagen I Rat Protein, Tail	A1048301
Vitronectin protein	PHE0011
Attachment Factor Protein (1X)	S006100
Coating Matrix Kit Protein	R011K
Dissociation	
TrypLE Express	12604039
Trypsin-EDTA	25300054

Find out more at thermofisher.com/primarycells