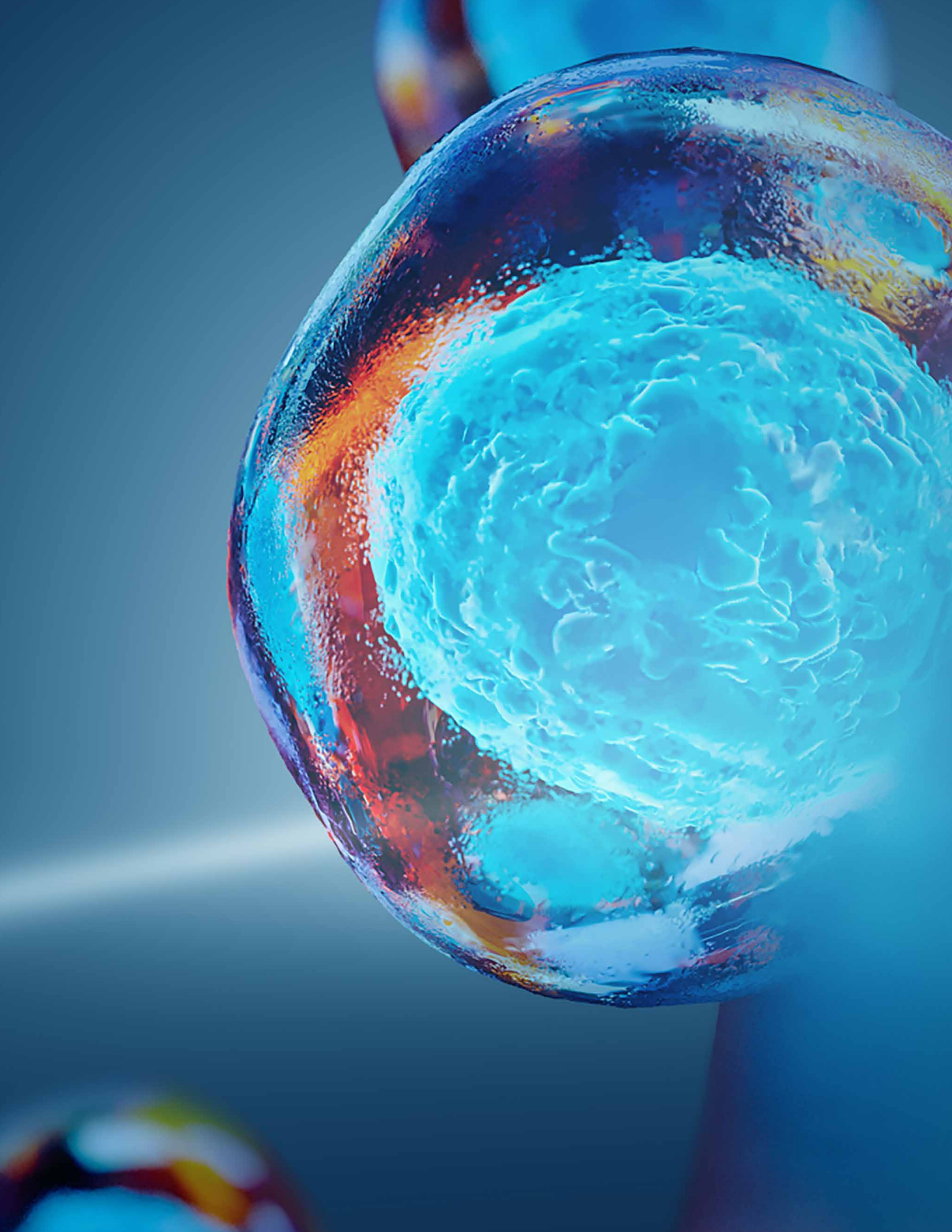




# MAKE THE CONNECTION

Explore the full Gibco product and service portfolio for the collaborations to power your research

**gibco**





# THINK YOU KNOW **GIBCO** PRODUCTS AND SERVICES?

Your progress stems from the strength, scope, and scale of your connections. Connections from ideas to experiments. Connections between research, clinical trial, and commercialization. Connections between fellow scientists, cutting-edge materials, and regulatory bodies.

Your story is our story. Your success is our success. Empowering your science by connecting you with the critical information, superior Gibco products, personal support, and resources you need is at the heart of all we do, each and every day.

# MAKE CONNECTIONS FOR THE LIFE OF YOUR RESEARCH

You're in pursuit of preserving and improving human life through your research objectives, from cancer to cell therapy to disease modeling. We'll connect you with everything you need to power your scientific journey:

- PORTFOLIO**  **Products and emerging technologies that are available, used, and recognized as cGMP quality**
- EXPERTISE**  **Ready access to hands-on regulatory and scientific support**
- SCALABILITY**  **Proven portfolio of end-to-end solutions, from the bench to production**
- COMMUNITY**  **Education, training, resources and hands-on technical support**
- LEGACY**  **Nearly six decades of proudly serving and advancing science and scientists**

Whether you're in academic research or commercial development, no matter if you're a single lab or a CRO in support of large-scale clients, **together we can connect you with what you need.**



## Did you know

---

We offer 50+ sustainable product lines, including our award-winning Gibco™ Bottle?

## Portfolio

# CONNECT FOR ANY APPLICATION

We have the solutions, in-lab support, and reliable materials you need for applications across cell culture through to bioprocessing.

So you can consistently hit milestones and stay ahead of timelines, achieve reproducible outcomes, and ultimately become an innovator in the lab and a leader in your field of expertise.

## Did you know

Gibco cell culture products were used in the first clinical transplantation of a tissue-engineered airway?



# Cell Culture Essentials

Great results aren't the only reason to use our cell culture products. They can also help significantly reduce your prep time, lab missteps, and the risk of contamination. Explore our suite of confidence-inspiring cell culture media, FBS, transfection solutions and cell culture plastics to see how healthy, stable cells connect challenging experiments with reproducible outcomes. Because reproducible outcomes mean happy scientists.

## Protein Expression

What makes the Gibco™ Expi systems unique? Getting to your protein faster is just half of what's required; you also need enough protein to perform your work. We have synergistically applied advanced technologies in suspension culture media, feed and supplements, transfection reagents, expression enhancers, and cell line development to increase yields from HEK293, CHO, and transient expression systems to higher levels than any other transient expression systems in the market - in just a matter of days.

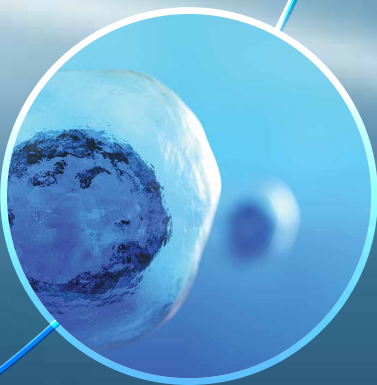
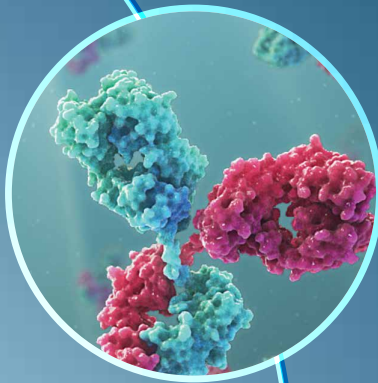
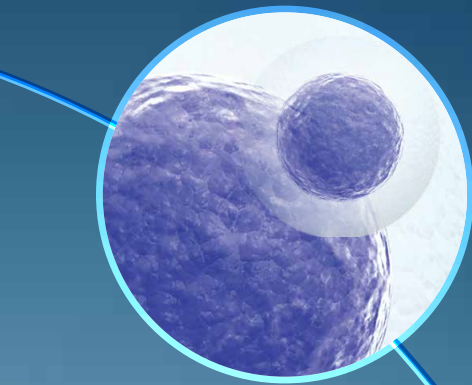
Maximize yield. Minimize risk. Gain consistency, scalability, and speed. So you can be fast but right, again and again, from discovery to commercialization.

## Stem Cell Research and Neurobiology

For researchers using stem cells to build physiologically relevant cell models, we provide the critical products, services, and resources to support flexible stem cell workflows, generate reliable and reproducible data, and enable innovative research. From stem cell culture, engineering, characterization, differentiation and disease modeling, we connect you to the best solutions enabling you to push the boundaries of your stem cell research.

## Cell Therapy Systems (CTS™) Products

When every moment counts and faster advances in cell therapy can help transform how we think about medicine, our integrated, scalable, and custom solutions provide the power to accelerate your cell therapy research to the clinic and beyond. We will support you from discovery to clinic with a full suite of cGMP and EMA grade products, extensive testing and regulatory documentation, with proven use in FDA-approved cell therapies and over 200 clinical trials.



**Expertise**

# CONNECT WITH SCIENTISTS LIKE YOU

Your unique research goal, your daily workflow, and your journey towards a big breakthrough and market development can be one lined with both unwanted obstacles and unavoidable challenges. Our experience, expertise, online training, and in-house scientists are all here to help. The result is that your time is spent on experiments and outcomes, progress and innovation, not troubleshooting problems or worrying about resources.



**Our regulatory and technical professionals are qualified to give you guidance on ensuring cGMP and government compliance, which is critical to hitting project milestones and ensuring successful outcomes.**



**Our skilled support teams are always on hand when you need them. From choosing the right products for your projects and budget to supporting the setup of your lab to suit specific experiments.**



**If you are lacking personnel or know-how in the lab and are unable to complete your workflow, we can offer the guidance, expertise, and advice you need to succeed.**





## Did you know

---

We can customize your cells to suit your specific research goals?

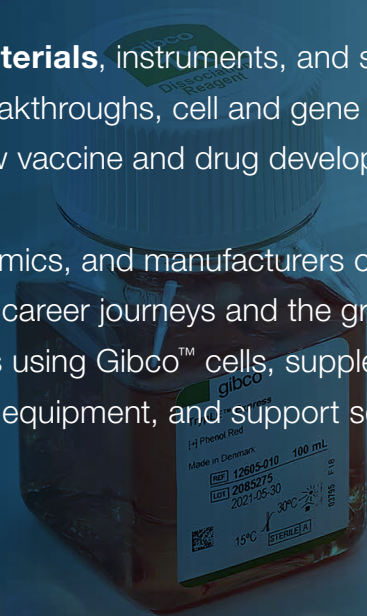
Scalability

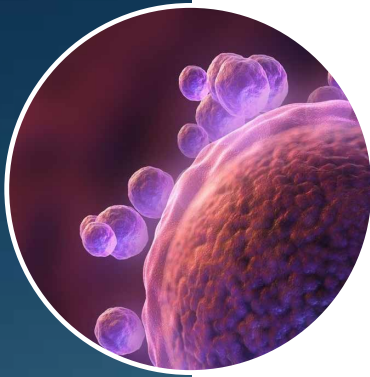
---

# CONNECT THE RESEARCH BENCH TO FULL-SCALE PRODUCTION

**Our revolutionary materials,** instruments, and scalable solutions drive today's breakthroughs, cell and gene therapy advances, and new vaccine and drug developments.

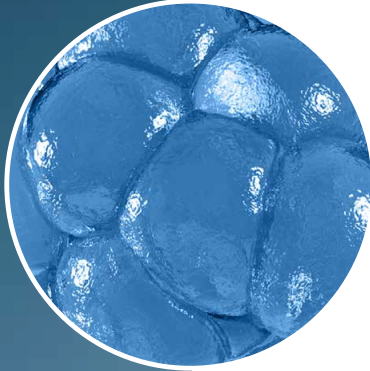
That's why scientists, academics, and manufacturers continue to innovate throughout their career journeys and the growth of their organizations using Gibco™ cells, supplements, equipment, and support services.





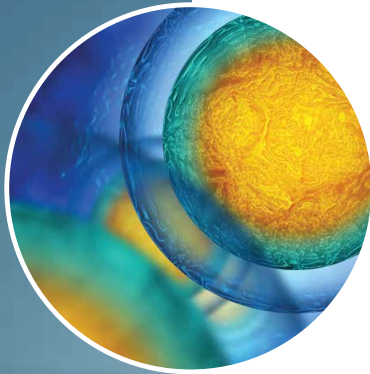
Whether you work in disease modeling, regenerative medicine or any other application, we have the products and services to support your research.

---



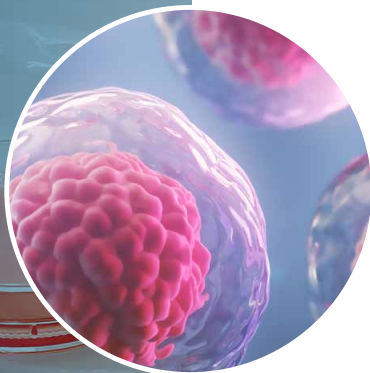
The emergence of organoid, spheroid and 3D cell culture is one of the most exciting prospects in life science research. We have the tools to help empower your work in this fascinating field.

---



Together, we can help you advance not only your projects, but your field. Our products were used in the first mammalian clone; cell therapy clinical trial; genetically modified T cell therapy or CAR T cell therapy, HIV clinical trial; automated device; clinical transplantation of a tissue-engineered pathway and more.

---



Achieve optimal outcomes from discovery through large-scale commercial production. Our collaborative approach to bioprocessing includes open architecture engineering and customization when your work needs to scale-up.

## Did you know

---

You can start in research and scale to the clinic and commercial with Gibco™ products and services?

**Community**

# CONNECT WITH WHAT YOU NEED TO GROW YOUR CELLS AND YOUR CAREER TOO

Pushing the boundaries of scientific discovery happens when the scientist behind the experiment is empowered. Our educational resources, virtual trainings, seminars, and inclusive online community give you both the tools and the confidence to accelerate your career, and overcome challenging experiments, too.





- Cell Culture Heroes: a community of global researchers who promote education and drive tomorrow's breakthroughs
  - Global seminars and virtual events to network and learn from industry leaders
  - Experts on hand with practical guidance, in-lab assistance and technical advice
  - Gibco Education: a virtual hub for trainings and resources to help you start your experiments or your career
  - Support to select the custom materials, cells, and technology to suit your research or workflow
  - Scientists available for in-lab support to help your lab run quickly, efficiently, and safely

## Did you know

You can access virtual hands-on training with Gibco Education?

# CONNECT WITH NEARLY 60 YEARS OF IMPROVING HEALTH OUTCOMES

## 1960s



- Professor Leonard Hayflick discovers the capacity for cells to divide in culture
- Biologists Bob and Earline Ferguson jump from experiments in a Grand Island garage to producing homemade serum. Gibco (Grand Island Biological Company) is born
- First Gibco™ serum and dry powder media for scientific research are produced

## 1970s 1980s



- First embryonic stem cells cultured
- Gibco™ FBS begins to assay Fetal Bovine Serum in cell culture applications
- First custom culture product lines produced
- First to be used in patient treatment
- Gibco products used to support early (or the first) cell therapy clinical trials

Innovation breeds innovation. And our continued advances in cell and gene research tools and techniques have enabled many of history's greatest breakthroughs in pharmaceuticals, therapies and precision medicine. Count on us to power your innovation in your quest to research and develop life-saving vaccines and drugs or life-changing therapeutics and cancer treatments.

## Did you know

In 2002 the FDA cleared Gibco™ AIM V™ Medium as an *ex vivo* medical device?

### 1990s

- First use of liquid media concentrate technology in large-scale production
- First use of recyclable packaging and PET bottles
- Dolly the Sheep - first mammal cloned from an adult somatic cell using Gibco media

### 2000s

- Advanced Granulation Technology (AGT™) launched
- First induced pluripotent stem cells
- Gibco bottle wins the Ameristar Package Award for sustainable packaging innovations

### 2010s 2020s

- First use of RNA-guided editing to engineer the genome of human cells
- First CAR-T cell therapies approved utilizing Gibco CTS products

Let's keep writing your story,  
together. Contact us today  
to find out how we can  
support your projects, your  
lab, your organization, and  
your career to improve health  
outcomes everywhere.

Make the connection at  
[thermofisher.com/gibco](https://thermofisher.com/gibco)