

**protein** biology

thermo**scientific** invitrogen



We have a gel for that

Trusted performance from a  
broad range of protein gel options

**ThermoFisher**  
SCIENTIFIC



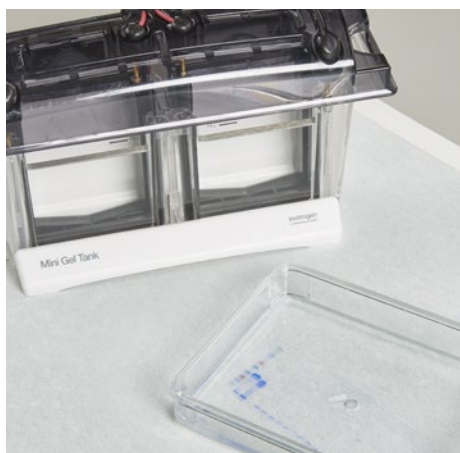
# Choice without compromise

With a focus on your evolving protein research needs, we offer you a complete array of products to support rapid, reliable protein electrophoresis optimized for a variety of applications, whether it's at the first or last step in your workflow. All of our precast protein gels are designed to deliver superior performance, reliability, reproducibility, and consistency of quality. Our extensive portfolio of precast protein gels provides a wide variety of gel options available for your research.

Whether your protein is 2.5 kDa or as large as 500 kDa, or you're looking for separation under native conditions or by isoelectric point—or you wish to identify protease activity—we have the right gel for your application.

Use this brochure to compare gel chemistries, learn about the benefits you can expect from each, and select recommended protein ladders to enable better quality protein separation results.

# Contents



Overview	2
Broad molecular weight protein separation: Bis-Tris and Tris-glycine chemistries	4
High molecular weight protein separation: Tris-acetate chemistry	9
Low molecular weight protein separation: Tricine chemistry	10
Native protein gel electrophoresis: Bis-Tris chemistry	11
Gel tanks and protein stains	12
Protein mini gel migration charts	13
Protein ladders	Inside back cover

# Overview

## Four optimized precast gel chemistries

Our precast protein gels are offered in 4 different chemistries. The choice of whether to use one chemistry or another depends on the abundance of the protein you're separating, the size of the protein, and your downstream application, as illustrated in the selection guide on the following page.

For separation of a broad range of proteins, two chemistries, Bis-Tris and Tris-glycine, have been optimized for performance and long shelf life.

Select Bis-Tris gel chemistry when you have a low abundance of protein or when your downstream applications require high protein integrity, such as posttranslational modification analysis, mass spectrometry, or sequencing. Bis-Tris gel chemistry provides greater sensitivity for protein detection compared to Tris-glycine gel chemistry. The innovative Bis-Tris chemistry offered in our Invitrogen™ Bolt™ and NuPAGE™ gels is a modification of the conventional Laemmli Tris-Glycine system. Bis-Tris chemistry provides a neutral (pH 7.0) environment during electrophoresis, which may result in better sample integrity and stability of the gel, which help reduce protein modifications and produce sharp band resolution and better-looking western blots. Our Invitrogen™ Bolt™ Bis-Tris Plus mini gels build on the legacy of the highly published Invitrogen™ NuPAGE™ Bis-Tris gels.

To separate high-abundance proteins, select our robust Invitrogen™ Novex™ Tris-Glycine gel chemistry, which offers maximum protein separation performance and crisp, straight bands.

Tris-acetate gel chemistry, offered in Invitrogen™ NuPAGE™ Tris-Acetate gels, is recommended for the separation of high molecular weight proteins up to 500 kDa. Tricine gel chemistry is designed for the separation of low molecular

weight proteins and peptides. Our Invitrogen™ Novex™ Tricine gels provide increased resolution of proteins with molecular weights as low as 2.5 kDa.

For separation of proteins under nondenaturing conditions, Invitrogen™ NativePAGE™ gels, also based on Bis-Tris chemistry, are designed to separate proteins up to 10,000 kDa.

### Acrylamide concentration options

A wide range of gel concentrations is offered to enable the separation of a broad range of proteins. The size of the molecule being separated should determine the gel concentration selected. As a general rule, molecules should migrate through about 70% of the length of the gel for the best resolution. Use a lower-percentage gel to resolve larger molecules and a higher-percentage gel to resolve smaller proteins and peptides. Gradient gels separate a broader range of proteins than a gel with a constant percentage. As gradient gels are more difficult to hand cast, the convenience and reproducibility of Invitrogen™ gradient gels may reduce your lab's protein separation anxiety.

Refer to the insert in the back of this brochure to view gel migration charts for ladders of various size ranges.

### Mini gels and midi gels

Invitrogen™ precast gels are available in two size formats: mini gels and midi gels. Both gels are the same height and have similar running times, but midi gels are a wider gel format (8 cm x 13 cm), designed for your higher-throughput electrophoresis needs. The additional wells in the midi gels permit more samples or large sample volumes to be loaded onto one gel.

Learn more at [thermofisher.com/proteingels](https://www.thermofisher.com/proteingels)



## Gel selection guide

Find the right gel for your research needs based on sample type, separation type, and molecular weight.

Denaturing separation*			
Molecular weight range	Sample type		
	Low-abundance proteins and posttranslationally modified proteins		High-abundance proteins
Broad range molecular weight proteins (6–400 kDa)	Bis-Tris gel chemistry		Tris-glycine gel chemistry
	Bolt Bis-Tris Plus Mini Gels (load up to 60 µL samples)	NuPAGE Bis-Tris Gels	Novex Tris-Glycine Mini Gels, WedgeWell format
High molecular weight proteins (40–500 kDa)	Tris-acetate gel chemistry		
	NuPAGE Tris-Acetate Gels		
Low molecular weight proteins (2.5–40 kDa)	Tricine gel chemistry		
	Novex Tricine Mini Gels		

\* Low-throughput applications. For medium or high throughput, see Invitrogen™ E-PAGE™ 48-well or 96-well gels at [thermofisher.com/specialtygels](https://www.thermofisher.com/specialtygels)

Native separation					
Molecular weight				Isoelectric point	
1st dimension	NativePAGE gels	Novex Tris-Glycine Mini Gels, WedgeWell format	NuPAGE Tris-Acetate Gels	Novex IEF gels	ZOOM IPG strips
2nd dimension	NuPAGE Bis-Tris Gels, 2D well	Novex Tris-Glycine Gels, 2D well	Novex Tris-Glycine Gels, 2D well	Novex Tris-Glycine Gels, 2D well or NuPAGE Bis-Tris Gels, 2D well	Novex Tris-Glycine ZOOM gels, IPG well or NuPAGE Bis-Tris ZOOM gels, IPG well

Protease activity
Novex Zymogram gels (casein, blue casein, or gelatin substrates)

Learn more at [thermofisher.com/specialtygels](https://www.thermofisher.com/specialtygels)

Find the right protein gel using our interactive gel selection tool at [thermofisher.com/minigelselection](https://www.thermofisher.com/minigelselection)

# Broad molecular weight protein separation

## Bis-Tris chemistry: optimized protein separation for high-sensitivity applications

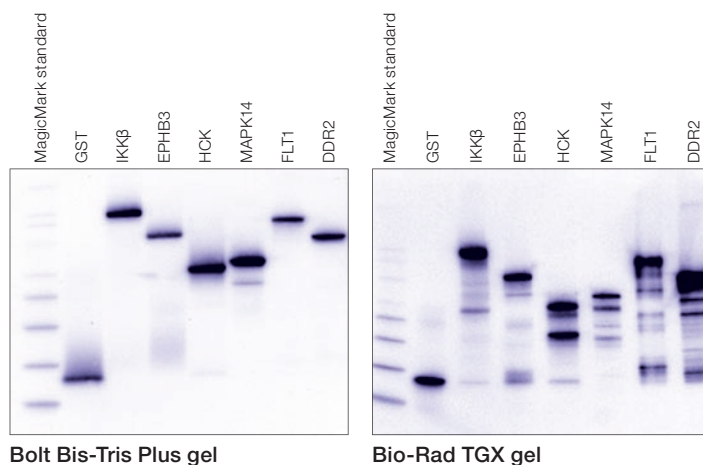
The Bis-Tris gel chemistry provides a neutral-pH environment that minimizes protein degradations. Additionally, preserving protein integrity becomes particularly important when separating low-abundance proteins. Bis-Tris chemistry gels are offered as Bolt Bis-Tris Plus mini gels and NuPAGE Bis-Tris mini gels. Bolt Bis-Tris Plus mini gels are designed for optimal separation of a broad molecular weight range of proteins under denaturing conditions during gel electrophoresis. The unique WedgeWell™ design allows loading of up to 2x more sample volume than other precast gels. Bolt gels are ideal for western blot analysis and applications where protein integrity is crucial and higher sensitivity is required.



Wedge-shaped well design of Bolt Bis-Tris Plus mini gels.

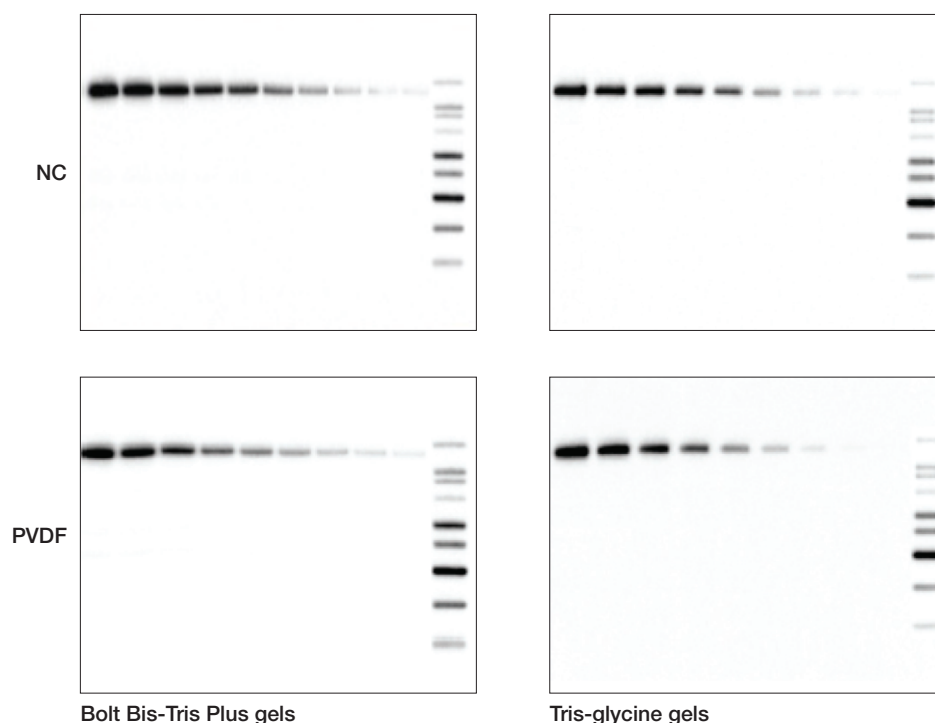
### Benefits you can expect from Bolt Bis-Tris Plus gels include:

- **Preserved protein integrity**—neutral-pH formulation minimizes protein modifications or degradation that can result in poor band resolution
- **High sample-volume capacity**—WedgeWell design allows detection of proteins in very dilute samples or visualization of low-abundance proteins
- **Superior band quality and band volume**—Bolt Bis-Tris Plus gel chemistry is designed to deliver sharp, straight bands with higher band volume
- **Better protein resolution**—gels are 10% longer, allowing detection of more protein bands than standard mini gels
- **High lot-to-lot consistency**—coefficient of variation (CV) of only 2% for  $R_f$  values (migration)
- **Optimized run conditions**—separate your proteins using constant voltage in approximately 35 minutes



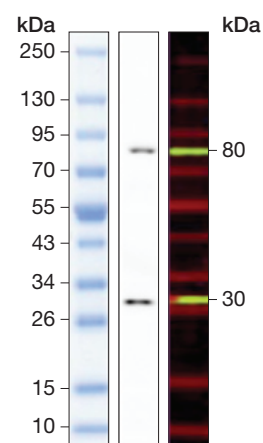
**Bolt Bis-Tris Plus mini gels help provide better western blotting results.** A western blot of a Bolt gel shows clean, sharp protein signals corresponding to only full-length proteins, whereas a western blot of a Bio-Rad™ TGX™ gel shows multiple low molecular weight degradation products. Protein kinases implicated in cancer (IKKβ, EPHB3, HCK, MAPK14, FLT1, and DDR2) were analyzed on a Bolt Bis-Tris Plus gel and a Bio-Rad TGX Tris-Glycine gel. The purified kinases (50 ng each), along with Invitrogen™ MagicMark™ XP Western Protein Standard and purified recombinant GST protein, were loaded on a 10-well, 4–12% Bolt gel and a 10-well, 4–20% Bio-Rad TGX gel. The samples were separated and transferred to 0.45 μm PVDF membranes using the respective manufacturers' protocols. Immunodetection was performed using an anti-GST antibody and Invitrogen™ WesternBreeze™ chemiluminescence detection. The blots were imaged using an LAS-1000 system (FujiFilm).

Learn more at [thermofisher.com/bolt](https://www.thermofisher.com/bolt)



**Greater sensitivity with Bolt Bis-Tris Plus gels.** Total cell extracts from A431 cells were transferred to NC and PVDF membranes from a 4–12% Bolt Bis-Tris Plus gel, and 4–20% Tris-Glycine precast gel using the Invitrogen™ iBlot™ 2 Gel Transfer Device. The cells were treated with 100 ng/mL of human epidermal growth factor (hEGF) to up-regulate expression of the phospho-EGF receptor. The protein loads of the cell extracts ranged from 20 µg to 1.2 µg of extract. The blots were processed on the Invitrogen™ iBind™ Western System with a 1:200 dilution of Phospho-EGF Receptor (Tyr1068) (1H12) Mouse mAb (Cell Signaling Technology) and a 1:2,000 dilution of anti-mouse HRP secondary antibody (Jackson ImmunoResearch). Detection was performed with Invitrogen™ Novex™ ECL HRP Substrate. Detection sensitivity was nearly two-fold greater using blots from Bolt gels compared to blots from Tris-glycine gels.

Specifications	
Gel percentages	8%, 10%, 12%, 4–12%
Gel dimensions	Mini (8 x 8 cm), 1.0 mm thick
Shelf life	16 months at 4–25°C
Separation range	15 kDa to 260 kDa (MOPS buffer), 3.5 kDa to 160 kDa (MES buffer)
Run time	20 min (MES buffer) 35 min (MOPS buffer)
Running buffer	MES SDS Running Buffer or MOPS SDS Running Buffer
Sample buffer	Bolt LDS Sample Buffer with Bolt Sample Reducing Agent
Recommended ladders	iBright Prestained Protein Ladder



**Invitrogen™ iBright™ Prestained Protein Ladder.** Gel: Novex 4–20% Tris-Glycine Mini Gel, WedgeWell format; **left:** prestained ladder after gel separation; **center:** chemiluminescent substrate on western blot; **right:** near-IR fluorescence on western blot.

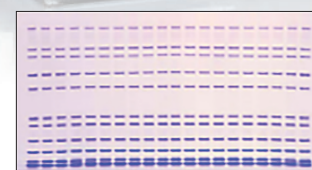
# Bis-Tris gels cited in >20,000 publications

Bis-Tris gel chemistry maintains proteins in a neutral-pH environment preserving protein integrity, resulting in sharp, straight bands. NuPAGE Bis-Tris gels provide the benefits of Bis-Tris chemistry and have been proven reliable in over 20,000 publications. Tried, trusted, and true, rely on NuPAGE Bis-Tris gels for superior broad-range protein resolution. NuPAGE Bis-Tris gels are offered in mini and midi formats.

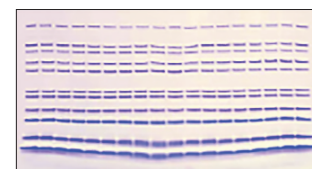
## Benefits you can expect from NuPAGE Bis-Tris gels include:

- **Preserved protein integrity**—neutral-pH formulation minimizes protein modifications or degradation
- **High lot-to-lot consistency**—coefficient of variation (CV) of only 2% for  $R_f$  values (migration)
- **A long shelf life**—16 months at room temperature

Specifications	
Gel percentages	10%, 12%, 4–12%, and 8% (midi only)
Gel dimensions	Mini (8 x 8 cm), 1.0 mm and 1.5 mm thick; midi (8 x 13 cm), 1.0 mm thick
Shelf life	12 months at 4–25°C
Separation range	15 kDa to 260 kDa (MOPS buffer), 3.5 kDa to 160 kDa (MES buffer)
Run time	As little as 35 minutes
Running buffer	NuPAGE MES SDS Running Buffer for small proteins or NuPAGE MOPS SDS Running Buffer for medium to large proteins; use NuPAGE Antioxidant in the running buffer to maintain reduced state during the run
Sample buffer	NuPAGE LDS Sample Buffer with NuPAGE Sample Reducing Agent
Recommended ladders	iBright Prestained Protein Ladder (western blotting applications), PageRuler Plus Prestained Protein Ladder (for in-gel staining)



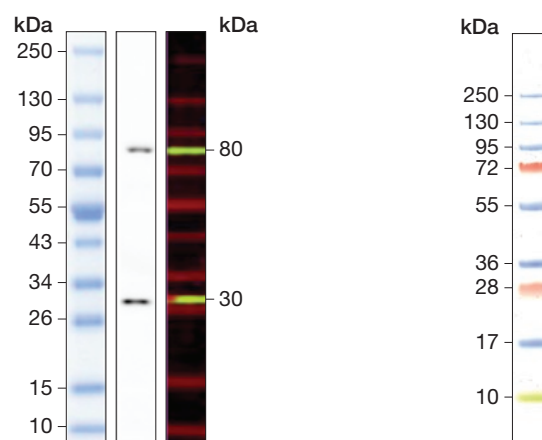
NuPAGE 4–12% Bis-Tris midi gel



Bio-Rad 4–12% Criterion XT Bis-Tris gel

## NuPAGE Bis-Tris gels deliver straighter lanes and straighter bands.

A NuPAGE 4–12% Bis-Tris midi gel with MOPS buffer and a Bio-Rad™ 4–12% Criterion™ XT Bis-Tris gel with MOPS buffer were loaded with 5  $\mu$ L Invitrogen™ Mark12™ Unstained Standard in each lane and stained with Coomassie dye.



**iBright Prestained Protein Ladder. Gel:** Novex 4–20% Tris-Glycine Mini Gel, WedgeWell format; **left:** prestained ladder after gel separation; **center:** chemiluminescent substrate on western blot; **right:** near-IR fluorescence on western blot.

**Thermo Scientific™ PageRuler™ Plus Prestained Protein Ladder.** NuPAGE 4–12% Bis-Tris gel run with NuPAGE MES SDS Running Buffer.

Learn more at [thermofisher.com/nupage](https://www.thermofisher.com/nupage)



# Tris-glycine chemistry: sharp protein resolution

Tris-glycine gels are robust for a wide range of sample types. Based on the traditional Laemmli chemistry, Novex Tris-Glycine gels provide high-quality performance and separation of a wide range of proteins into well-resolved bands and are compatible with samples containing detergent and high salt.

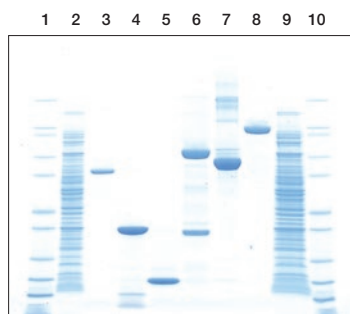
As an added bonus, Novex Tris-Glycine Mini Gels, WedgeWell format, feature easier-to-load, larger-capacity wells that let you load up to 60  $\mu$ L of sample.

## Highlights:

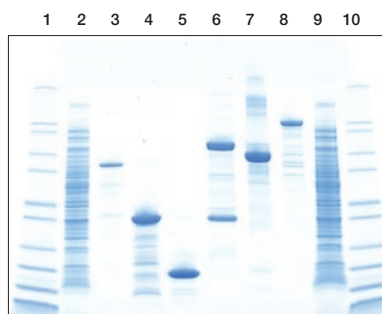
- **High performance**—excellent protein band resolution and sharpness
- **Wedge-shaped wells**—easily load up to 60  $\mu$ L of sample without sacrificing gel width or length (mini format only)
- **Fast run conditions**—quickly separate your proteins using constant voltage in less than 60 minutes
- **Flexible**—Novex Tris-Glycine gels do not contain SDS and can be used to run your proteins in native or in denatured form



Wedge-shaped well design of Novex Tris-Glycine Mini Gels, WedgeWell format.

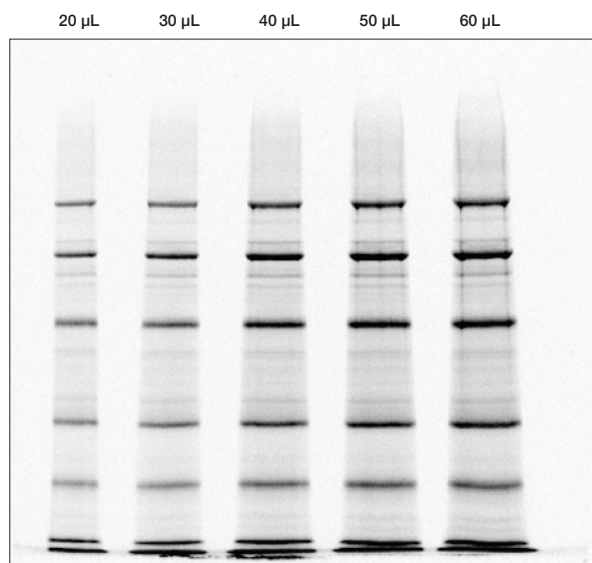


Novex 4–20% Tris-Glycine Mini Gel, WedgeWell format

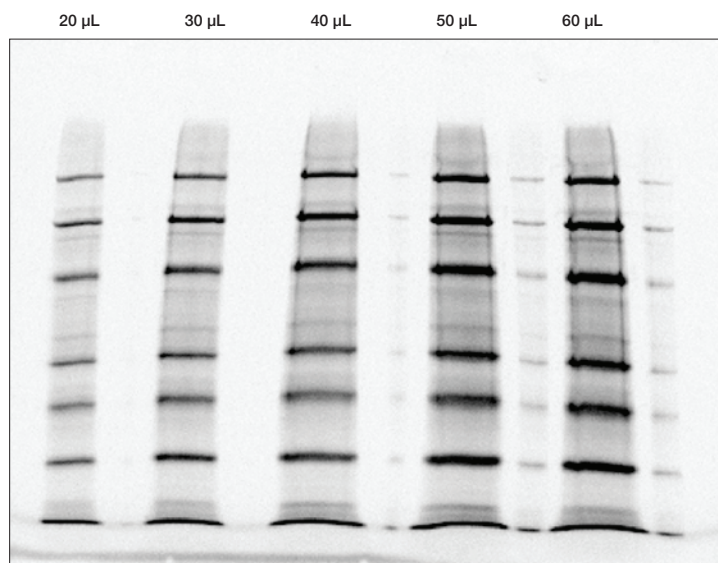


Bio-Rad TGX 4–20% Gel

**Better protein resolution and band sharpness with Novex Tris-Glycine Mini Gels, WedgeWell format.** Protein ladder, purified proteins, and *E. coli* lysate were loaded on a gradient Novex 4–20% Tris-Glycine Mini Gel, WedgeWell format, and a Bio-Rad TGX 4–20% gradient gel. The Bio-Rad TGX gel displays numerous low molecular weight protein degradation products below major bands in lanes 3, 4, 7, 8. These are not seen in the Novex Tris-Glycine gel. The Novex gel also displays better protein band sharpness and resolution of lysate than the Bio-Rad gel. **Lanes 1, 10:** 5  $\mu$ L Mark12 Unstained Standard; **lane 2:** 10  $\mu$ g *E. coli* lysate (10  $\mu$ L sample volume); **lane 3:** 6  $\mu$ g catalase (10  $\mu$ L sample volume); **lane 4:** 6  $\mu$ g carbonic anhydrase (10  $\mu$ L sample volume); **lane 5:** 6  $\mu$ g lysozyme (10  $\mu$ L sample volume); **lane 6:** 6  $\mu$ g hlgM (10  $\mu$ L sample volume); **lane 7:** 6  $\mu$ g BSA (10  $\mu$ L sample volume); **lane 8:** 6  $\mu$ g beta-galactosidase (10  $\mu$ L sample volume); **lane 9:** 20  $\mu$ g *E. coli* lysate (20  $\mu$ L sample volume).



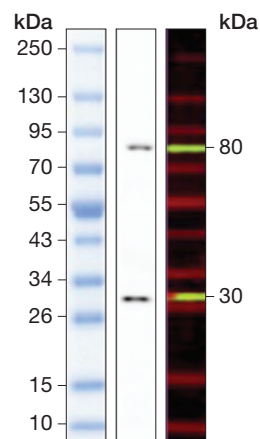
Novex Tris-Glycine mini gel, WedgeWell format, 10-well



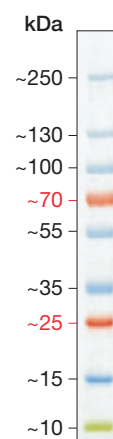
Bio-Rad TGX gel, 10-well

**Increased sample volume capacity of Novex Tris-Glycine mini gels, WedgeWell format.** Increasing volumes (20–60 µL) of a fluorescent protein ladder were loaded in every other lane of a Novex Tris-Glycine 10-well mini gel, WedgeWell format and a Bio-Rad TGX 10-well gel. In the Bio-Rad gel, sample spillover is observed in lanes adjacent to the 50 µL and 60 µL load lanes.

Specifications	
Gel percentages	6%, 8%, 10%, 12%, 14%, 16%, 4–12%, 4–20%, 8–16%, 10–20%
Gel dimensions	Mini (8 x 8 cm), midi (8 x 13 cm); 1.0 mm thick
Shelf life	Up to 12 months at 4°C
Separation range	8 kDa to 260 kDa
Run time	60 min
Running buffer	Novex Tris-Glycine SDS Running Buffer; for native gels, we recommend Novex Tris-Glycine Native Running Buffer
Sample buffer	Novex Tris-Glycine SDS Sample Buffer; for native gels, we recommend Novex Tris-Glycine Native Sample Buffer
Recommended ladders	iBright Prestained Protein Ladder (western blotting applications), PageRuler Plus Prestained Protein Ladder (for in-gel staining)



**iBright Prestained Protein Ladder. Gel:** Novex 4–20% Tris-Glycine Mini Gel, WedgeWell format; **left:** prestained ladder after gel separation; **center:** chemiluminescent substrate on western blot; **right:** near-IR fluorescence on western blot.



**PageRuler Plus Prestained Protein Ladder. Gel:** 4–20% Tris-glycine (SDS-PAGE).

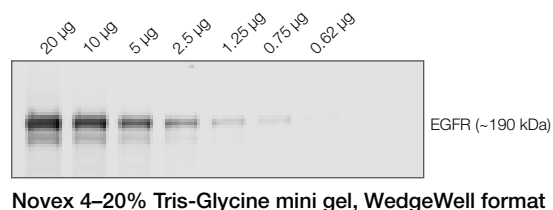
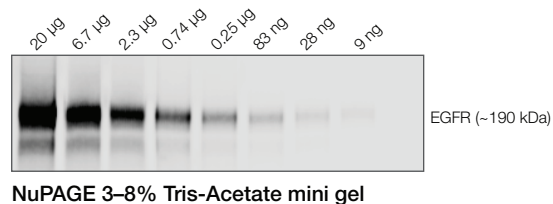
# High molecular weight protein separation

## Tris-acetate chemistry: designed for separation and detection of high molecular weight proteins

Tris-acetate gel chemistry enables the optimal separation of high molecular weight proteins when used with an SDS running buffer. NuPAGE Tris-Acetate gels offer a pH 8.1 environment that minimizes protein modifications and results in sharper bands. NuPAGE Tris-Acetate gels can also be run with Novex Tris-Glycine Native Running Buffer to resolve native proteins more effectively than a Tris-glycine gel system.

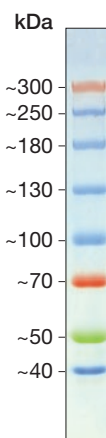
### NuPAGE Tris-Acetate gels and buffers are designed to allow:

- Optimal separation of high molecular weight proteins
- Preservation of protein sample integrity using optimized sample preparation processes
- Excellent transfer of high molecular weight proteins

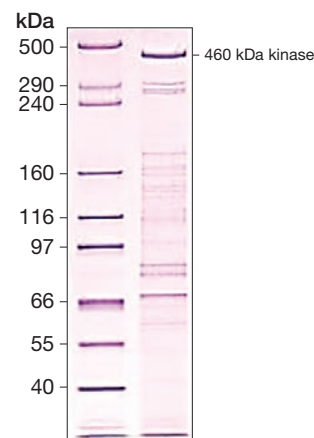


**Improved transfers of high molecular weight proteins enhance western detection sensitivity.** Western blotting analysis of EGFR from A431 lysates transferred from a Novex 4-20% Tris-Glycine mini gel, WedgeWell format, and a NuPAGE 3-8% Tris-Acetate mini gel using the iBlot 2 gel transfer device.

Specifications	
Gel percentages	7%, 3-8%
Gel dimensions	Mini (8 x 8 cm), 1.0 mm and 1.5 mm thick; midi (8 x 13 cm), 1.0 mm thick
Shelf life	6 months at 2-8°C
Separation range	30 kDa to 500 kDa
Run time	60 min for denaturing gel; 2-3 hours for native gel
Running buffer	For denatured proteins we recommend NuPAGE Tris-Acetate SDS Running Buffer; for native proteins we recommend Novex Tris-Glycine Native Running Buffer
Sample buffer	For denatured proteins we recommend NuPAGE LDS Sample Buffer; for native proteins we recommend Novex Tris-Glycine Native Sample Buffer
Recommended ladders	Spectra Multicolor High Range Protein Ladder (western blotting applications), HiMark Unstained Protein Standard (for in-gel staining)



**Thermo Scientific™ Spectra™ Multicolor High Range Protein Ladder.** Gel: 4-12% Tris-glycine gel (SDS-PAGE).



**Invitrogen™ HiMark™ Unstained Protein Standard and high molecular weight proteins.** Gel: NuPAGE 3-8% Tris-Acetate; stain: Thermo Scientific™ Coomassie™ R-250 dye; **left lane:** 5 µL of HiMark Unstained Protein Standard; **right lane:** 4 µL of protein kinase sample.

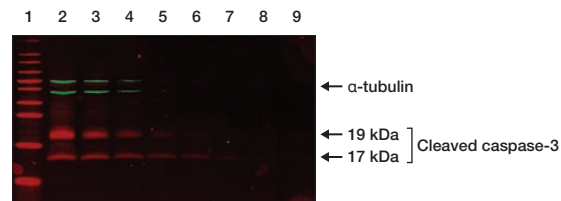
# Low molecular weight protein separation

## Tricine chemistry: designed for separation and detection of low molecular weight proteins

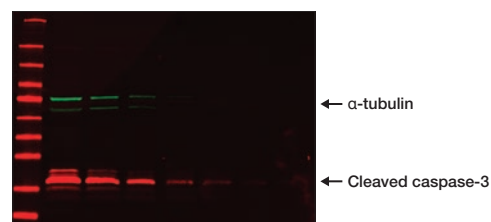
Tricine gel chemistry enables the optimum separation of low molecular weight proteins and peptides. Novex Tricine gels are high-resolution gels for peptide and low molecular weight protein analyses. The Novex™ Tricine gel system is a modification of the Tris-glycine system in which tricine replaces glycine in the running buffer. This system uses a discontinuous buffer system specifically designed for the resolution of low molecular weight proteins.

### Advantages of Novex Tricine gels over Tris-glycine gels include:

- Increased resolution of proteins with molecular weights as low as 2.5 kDa
- Improved compatibility with direct protein sequencing applications after transferring to PVDF membranes
- Minimized protein modification due to the lower pH of the tricine buffering system
- Minimized protein blow through during protein transfer



Novex 16% Tricine gel

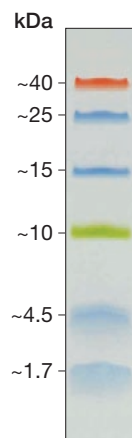


Bio-Rad TGX 4–20% Tris-Glycine gel

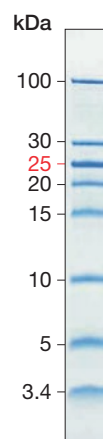
### Novex Tricine gels better resolve low molecular weight proteins.

**Lane 1:** Thermo Scientific™ PageRuler™ Prestained NIR Protein Ladder; **lanes 2–9:** 1  $\mu$ L loads per well of a 1.5x dilution series of a Jurkat cell lysate after cytochrome C treatment. After separation on Novex 16% Tricine and Bio-Rad TGX 4–20% Tris-Glycine gels, transfers were probed with primary antibodies against caspase-3 and  $\alpha$ -tubulin, followed by secondary antibodies labeled with Invitrogen™ Alexa Fluor™ Plus 680 and Invitrogen™ Alexa Fluor™ Plus 800 dyes, respectively. The Novex 16% Tricine gel resolved the 17 and 19 kDa bands of cleaved caspase-3 whereas the Bio-Rad TGX Tris-Glycine gel did not provide such resolution.

Specifications	
Gel percentages	10%, 16%, 10–20%
Gel dimensions	Mini (8 x 8 cm), 1.0 mm thick
Shelf life	1–2 months at 2–8°C
Separation range	2 kDa to 20 kDa
Run time	90 min
Running buffer	Novex Tricine SDS Running Buffer
Sample buffer	Novex Tricine SDS Sample Buffer
Recommended ladders	Spectra Multicolor Low Range Protein Ladder (western blotting applications), PageRuler Unstained Low Range Protein Ladder (for in-gel staining)



Spectra Multicolor Low Range Protein Ladder. Gel: Tricine.



Thermo Scientific™ PageRuler™ Unstained Low Range Protein Ladder. Gel: Tricine; stain: Coomassie blue.



# Native protein gel electrophoresis

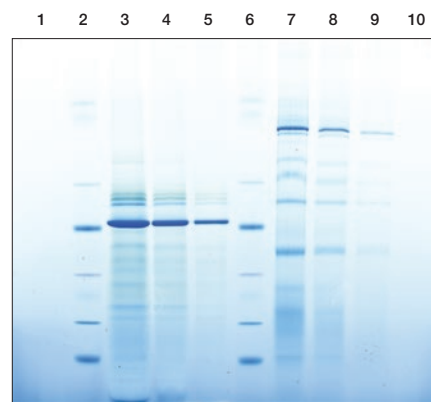
## Bis-Tris chemistry: superior resolution of native proteins and protein complexes

Bis-Tris chemistry offers sensitive, high-resolution analysis of native proteins and protein complexes for molecular mass estimations, and assessment of purity. NativePAGE Bis-Tris gels are based on the blue native polyacrylamide gel electrophoresis (BN-PAGE) technique that overcomes the limitations of traditional native electrophoresis by providing a near-neutral operating pH and detergent compatibility.

We offer NativePAGE Bis-Tris gels for blue-native electrophoresis of proteins and protein complexes.

### Advantages of the NativePAGE Bis-Tris Gel System over traditional Tris-glycine gels include:

- **Wide molecular weight resolving range**—from 15 kDa to 10,000 kDa
- **Neutral-pH separation**—better preserves the native state of protein complexes
- **BN-PAGE technique**—resolution of all proteins in the gel regardless of their isoelectric point (pI)
- **High performance**—higher resolution than with Tris-glycine native electrophoresis



NativePAGE 3–12% Bis-Tris mini gel

**NativePAGE Bis-Tris mini gel electrophoresis resolves very large proteins and protein complexes.** Two-fold dilution series of protein extracts were run on an Invitrogen™ NativePAGE™ 3–12% Bis-Tris mini gel using a Mini Gel Tank. **Lanes 1 and 10:** blank; **lanes 2 and 6:** 5 µL Invitrogen™ NativeMark™ Unstained Protein Standard; **lanes 3, 4, and 5:** 10, 5, and 2.5 µg spinach chloroplast extract; **lanes 7, 8, and 9:** 10, 5, and 2.5 µg bovine mitochondrial extract.

Specifications	
Gel percentages	3–12%, 4–16%
Gel dimensions	Mini (8 x 8 cm), 1.0 mm thick
Shelf life	1–2 months at 2–8°C
Separation range	15 kDa to 10,000 kDa
Run time	90 min
Running buffer	NativePAGE Running Buffer and NativePAGE Cathode Buffer Additive
Sample buffer	NativePAGE Sample Buffer
Recommended ladders	NativeMark Unstained Protein Standard



**NativeMark Unstained Protein Standard.**  
**Gel:** 4–16% NativePAGE Bis-Tris Gel;  
**stain:** Coomassie G-250.

# Gel tanks and protein stains

## One tank, 181 gels

The Mini Gel Tank is designed for more intuitive use and greater convenience compared to traditional electrophoresis tanks. The unique, side-by-side tank design allows you to perform electrophoresis of 1 or 2 mini gels.

### The Mini Gel Tank offers:

- **Versatility**—compatible with all of our mini gels, including Bolt, NuPAGE, Novex, and NativePAGE gels
- **Easy sample loading**—forward-facing well configuration
- **Simultaneous visualization of both gels**—streamlined, side-by-side tank configuration
- **Simple monitoring of gels**—white tank stand provides easy visualization of prestained markers
- **Less running buffer required**—gel chambers are separated, so you only need to load sufficient buffer for each gel to the specified fill line
- **Convenient western blotting**—innovative Mini Blot Module fits into Mini Gel Tank chamber for easy protein transfer



Learn more at  
[thermofisher.com/minigeltank](https://thermofisher.com/minigeltank)

## Gel stains

A wide variety of gel staining options are available for your applications, including Coomassie, silver, and fluorescent staining.

### Coomassie staining

Invitrogen™ SimplyBlue™ SafeStain is a ready-to-use, fast, sensitive, and safe Coomassie G-250 stain for visualizing protein bands on polyacrylamide gels. SimplyBlue SafeStain is completely nonhazardous and does not require methanol or acetic acid fixatives or destains.

### Silver staining

The Thermo Scientific™ Pierce™ Silver Stain Kit is a rapid, ultrasensitive, and versatile silver stain system for protein detection in polyacrylamide gels. The Pierce Silver Stain Kit is a metallic silver (Ag) protein stain that yields a remarkably clear and uniform gel background while enabling consistent, high-sensitivity staining results.



Learn more at  
[thermofisher.com/proteinstains](https://thermofisher.com/proteinstains)

Protein mini-gel migration charts



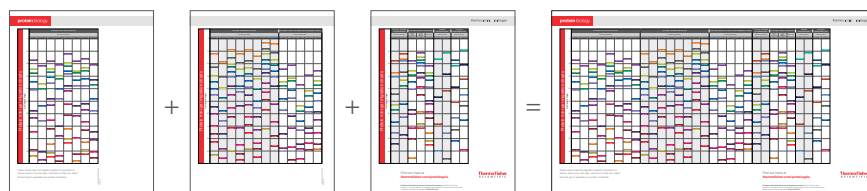
These charts map the migration patterns of proteins of various sizes in our mini gels. Use them to help you select the best gel to separate your protein of interest.

↑  
Cut here

# Protein mini-gel migration charts



By cutting where indicated, you may assemble the full-size gel migration chart from these three pages.



Cut here





Find out more at  
[thermofisher.com/proteingels](http://thermofisher.com/proteingels)

**ThermoFisher**  
 SCIENTIFIC

# Protein ladders

A complete line of protein ladders assist you with your protein analysis

Look to our broad range of prestained and unstained protein ladders supplied in a ready-to-use format to facilitate easy protein analysis during gel electrophoresis and western blotting.

**Prestained protein ladders are recommended for:**

- Approximate determination of molecular weight
- Monitoring the progress of electrophoresis runs
- Estimating the efficiency of protein transfer to the membrane during western blotting

**Unstained protein ladders are recommended for:**

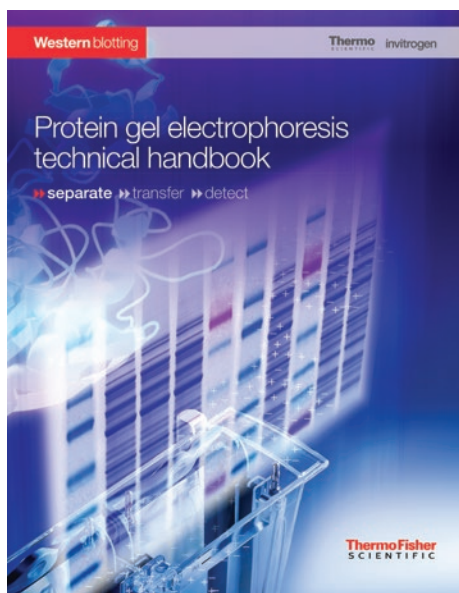
- Precise determination of target protein molecular weights in any buffer system

**Our protein ladders offer extraordinary value—high quality without the high price:**

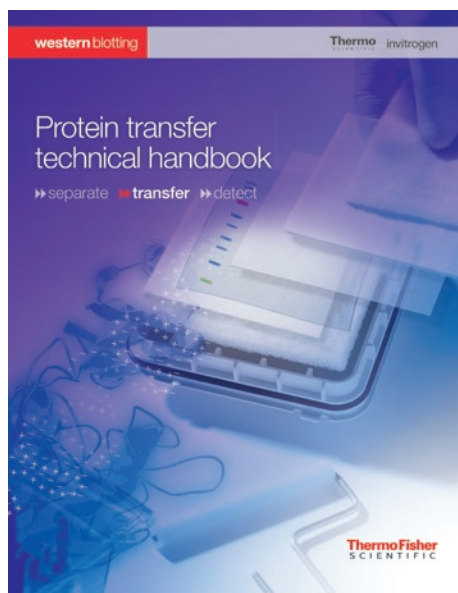
- **Performance**—sharp protein bands and consistent migration patterns enable easy molecular weight determination
- **Convenience**—protein ladders are ready to load, with no heating required
- **Reliability**—exceptional lot-to-lot consistency and reproducibility

Find out more at [thermofisher.com/proteinladders](https://www.thermofisher.com/proteinladders)

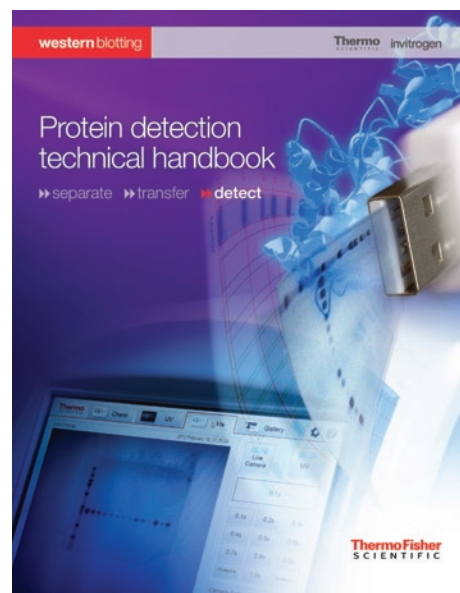
Get useful information for improving your protein separation and western blot results from our protein separation, transfer, and detection technical handbooks. Download your free copies today.



[thermofisher.com/pagehandbook](http://thermofisher.com/pagehandbook)



[thermofisher.com/transferhandbook](http://thermofisher.com/transferhandbook)



[thermofisher.com/detecthandbook](http://thermofisher.com/detecthandbook)

Find out more at [thermofisher.com/proteingels](http://thermofisher.com/proteingels)

**ThermoFisher**  
SCIENTIFIC