

# SUPPLYING SUCCESS


In the digital era, labs are feeling the pressure to produce more than ever. Efficiency and productivity have become as important as reproducibility, but day-to-day tasks can be quickly derailed without the right resources.



Which path is your lab headed down?

## Standard supply closet

Scientist visits the supply closet only to find that a crucial consumable for his upcoming experiment is out of stock.

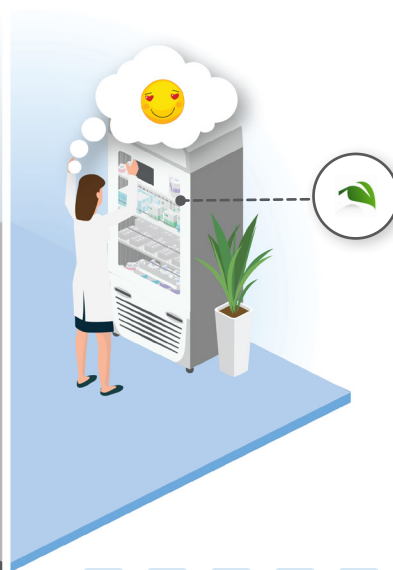
 The time-sensitive experiment has to be delayed, which results in a backlog and hinders productivity.




## Supply Center by Thermo Fisher Scientific

Scientist visits the on-site **Supply Center by Thermo Fisher Scientific** to retrieve the supplies she needs.

She looks for products marked with a green leaf symbol, which is used to designate the most environmentally friendly options, and selects a less-hazardous consumable with sustainable packaging.



Scientist notifies his lab manager that he can't complete the experiment on time and needs to order the supply.

 Frustrated lab staff must scramble to rectify the supply situation.




The scientist conducts her experiment.

**Science starts here.**





The purchasing manager places a rush order for the supply.


 The lab is forced to spend extra money for expedited shipping.




## With a Supply Center by Thermo Fisher Scientific

 Inventory is automatically monitored and replenished with automated, on-site stocking

 Lab employees can request new products to be added to inventory

 Lab managers can easily track inventory levels and workflow efficiency

 Purchasing managers can place orders and control costs with simple online tools, with less paperwork than ever

The supply arrives later in the week via a special shipment, creating superfluous packaging waste.

**Finally, science can start.**



**Never understocked.  
Never overstocked.  
... Always ready to start science.**



Having the right supplies on hand is crucial to your lab's bottom line and long-term sustainability. Without the proper consumables to support your scientific efforts, it's easy to fall behind. **Simplify lab management with a Supply Center by Thermo Fisher Scientific, so you can focus on the complexities of science.**

**Thermo Fisher**  
SCIENTIFIC