



PETRI LABELER

Neither more nor less ... an easy and inexpensive system to identify 90 mm Petri dishes.

Barcode Labeling



Doc. No. 50007818

Product overview



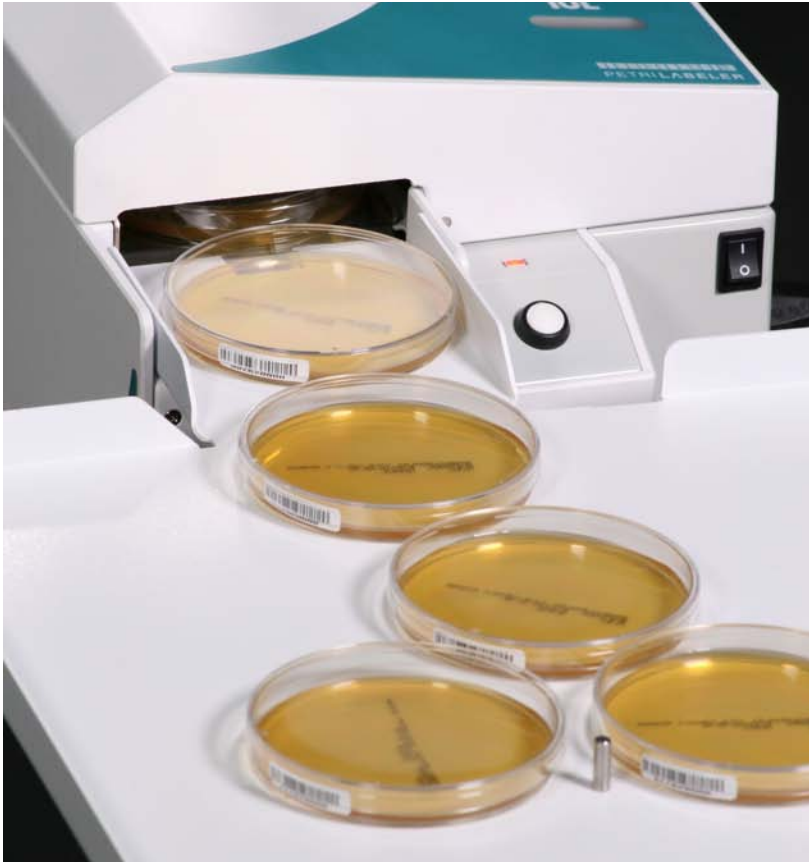
The unit automatically tags barcode labels on the side walls of Petri plates.

Operating the unit is as simple as feeding a stack of Petri plates on one end, pushing the “start” button, and collecting labeled plates at the other end.

The Petri Labeler labels plate walls, enabling comfortable inspection, reading, and counting of Petri plates.

System highlights

- **Readiness:** Labels come preprinted with a 9 figures number, potential mistakes are avoided.
- **Traceability:** By using a barcode reader, any identified Petri plate can be associated to any sample at any time.
- **Maintain sterility:** During the pairing process, the lid is never removed, it is only slightly displaced to allow the label to be stuck on the side wall of the plate.
- **Flexibility:** Identified Petri plates await being collected, once removed, a new plate is processed. Alternatively, a whole stack of plates can be processed at once, labeled plates can be collected in an optional collecting platform.
- **Adaptability:** It easily accommodates different 90mm Petri dish sizes (e.g. different diameter and/or height).
- **Productivity:** Less than 2 seconds per plate.
- **Friendliness:** Small footprint and silent operation.



BARCODE LABELING



Petri Labeler
CAT. No. 90005800



Accessories



1. Petri Labeler storage table
CAT. No. 900011491
2. 5000 label reel set
CAT. No. 90001394
3. Short stacker
CAT. No. 900014841

Technical Data

Power range: 100-240 V AC

Frequency range: 50/60Hz

Maximum power: 25W

Overvoltage category: II

Air temperature: 5-32°C (41-89,6°F)

Altitude: Up to 2000m. (6500Ft.)

Place of operation: For indoor use only.

Pollution level: 2

Labeling features:

Petri dish dimensions: Common 90mm Petri dishes

Label size: 8 x 30 mm

Label characteristics: White coated, calendared, woodfree paper.

Adhesive characteristics: General purpose permanent acrylic water based adhesive. The adhesive conforms several regulations certified by ISEGA for direct contact with dry and moist non-fatty foodstuffs.

Label shelf life: 2 years, stored at 22°C / 50% RH

Barcode characteristics: Simbology code 128

Barcode size: 3,8 x 27,7mm (approx.)

Thermal transfer printed ribbon used (Wax/resin):

-REACH/SVHC Free: 1907/2006/EC

-Food contact Approved: 1935/2004/EC

-Heavy metals free: 2002/95/EC, 2002/96/EC, and 2011/65/EC

-California proposition 65

-Halogen Free

ThermoFisher
SCIENTIFIC

Australia: For customer service, call 1300-735-292

Visit us online at: www.thermofisher.com.au

New Zealand: For customer service, call 0800-933-966

Visit us online at: www.thermofisher.co.nz

©2015 Thermo Fisher Scientific Inc. All rights reserved.

