



FLUKE®

Education Facilities and Training

Fluke provides solutions for educators and education facility professionals.

Education facilities include college campuses, technical and trade schools, high schools, secondary and elementary schools to name just a few. Most comprise a variety of environments including labs, clean rooms, classrooms, dorm rooms, auditoriums, gymnasiums, and swimming pools. Many of them serve tens of thousands of people while others only a few. They all have unique needs, which the facility professionals running them must address.

Educators training in vo-tech/trade schools, universities, colleges, and union apprenticeship training centres use Fluke tools in the classroom or lab.

See our full line of innovative products at www.fluke.com.au

Electrician/Engineer

Issues faced:

- Efficient, consistent, quality power delivery
- Safety and energy system maintenance
- Troubleshooting sensitive equipment
- Controlling efficient breakers and motors

Fluke solutions:

- 📶 Fluke Connect®
- ▲ Process Calibration Tools
- Digital Multimeters
- Light Testers
- Power Quality Analysers
- Clamp Meters
- Infrared Thermometers

Facility Manager

Issues faced:

- Controlling energy costs
- Meeting safety standards
- Preventive maintenance
- Expense management

Fluke solutions:

- Power Quality Analysers
- Light Tester
- Digital Multimeters
- Infrared Cameras
- Vibration

R&D Personnel

Issues faced:

- Selection and maintenance of equipment used in R&D labs
- Heavy equipment use

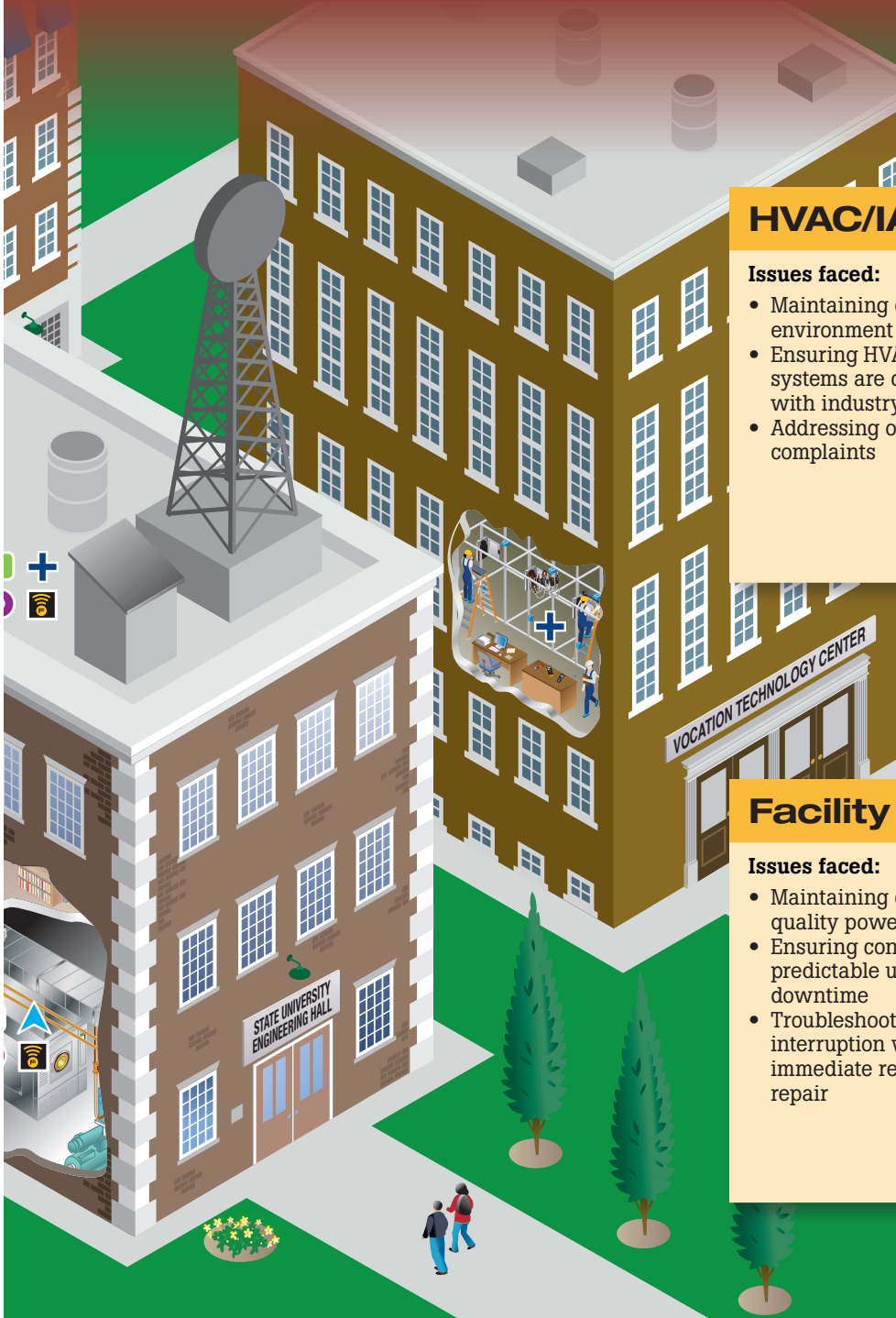
Fluke solutions:

- 📶 Fluke Connect®
- Handheld Oscilloscopes
- Digital Multimeters
- Electrical Test Tools
- Infrared Cameras



Fluke Solutions for Education and Facilities

Process Calibration Tools					Electrical Test Tools			
Process Documentation Calibrators	Pressure Gauges and Tools	Process Test Tools		Power Quality Analysers	Handheld Oscilloscopes	Power Loggers	Clamp Meters	
 726	 700G	 729	 789	 773	 430 Series II	 190 Series II	 1738	 902 FC



HVAC/IAQ Technician

Issues faced:

- Maintaining controlled environment
- Ensuring HVAC ventilation systems are compliant with industry standards
- Addressing occupant complaints

Fluke solutions:

- 📶 Fluke Connect®
- + Indoor Air Quality
- ⬢ Clamp Meters
- ⬢ Power Quality
- 🔍 Infrared Thermometers

Facility Engineer

Issues faced:

- Maintaining consistent quality power loads
- Ensuring continuous, predictable uptime and downtime
- Troubleshooting system interruption with immediate response and repair

Fluke solutions:

- 📶 Fluke Connect®
- + Indoor Air Quality
- ⬢ Power Quality
- 🔍 Infrared Cameras


Diagram is not intended to be an exact representation.
Diagram components are not to scale and are for illustration purposes only.

Fluke offers a full line of solutions for education professionals.
Go to www.fluke.com.au for detailed information on these and all Fluke products.

		Infrared and Vibration Tools				Air Quality	Software	
rs	Light Tester	Digital Multimeters	Performance Infrared Cameras	Professional Infrared Cameras	Infrared Thermometers	Vibration	Indoor Air Quality	Fluke Connect®
	1000FLT	279 FC	TiS60+	Ti401 PRO	568	805 FC	985	Fluke Connect®


Recommended education and facilities solutions

Fluke Connect®

Best suited for: 
Working between skills levels for troubleshooting help, diagnosing asset health analysis in the field, predictive and preventative maintenance, and work order approval




Digital Multimeters

Best suited for: 

- VSD motor drive installation and troubleshooting
- Quick, voltage measurement
- Environments with both AC and DC (auto-Volt) or ghost voltages




Power Quality Analysers

Best suited for: 

- Troubleshooting and preventing problems in power distribution systems
- Uncovering hard-to-find or intermittent problems
- Power quality surveys
- Validating incoming power quality at the service entrance




Clamp Meters

Best suited for: 

- Verifying the presence of load current, AC/DC voltage and continuity
- Current measurements up to 999.9 A in tight cable compartments




HVAC/IAQ

Best suited for: 

- Troubleshooting and maintaining indoor air quality
- Optimising HVAC ventilation settings
- Monitoring air quality and factors that may detract from comfort/safety




mA Process Clamp Meters

Best suited for: 

- Measuring 4 to 20 mA signals without breaking the loop
- Sourcing, simulating and measuring mA
- Sourcing, measuring DC voltage




Infrared Thermometers

Best suited for: 

- Surface temperature readings
- Non-contact monitoring of electrical motors and panels
- Finding heating and ventilation problems




Portable Oscilloscopes

Best suited for: 

- Troubleshooting and installation applications
- Finding fast answers to problems in machinery, instrumentation, control and power systems
- Bus health testing for industrial bus systems
- Applications when you need an oscilloscope, multimeter and "paperless" recorder, but want to carry a single tool



Infrared Cameras

Best suited for: 

- Detection of "hot spots" in motors, pumps, VFD's, bearings and wheels
- Inspecting pipes, motors and pumps
- Monitoring of switching heaters



Authorised distributor

Order Placement:

For customer service, call 1300-735-292
 To fax an order, use 1800-067-639
 To email an order, ordersau@thermofisher.com

Contact Us:

For customer service, call 1300-735-292
 For service and calibration, call 1300-736-767
 To order online: thermofisher.com

ThermoFisher
SCIENTIFIC