

ThermoFisher
SCIENTIFIC

FLUKE®



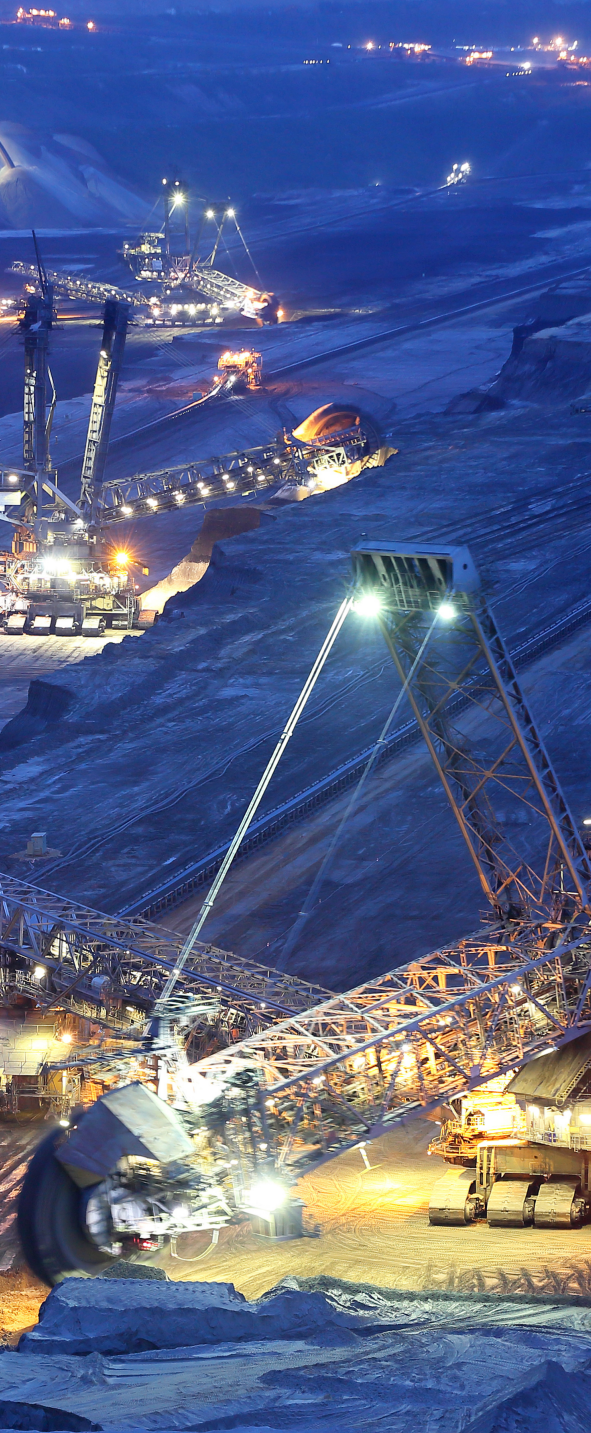
Mining Solutions

Fluke Solutions for Mining, Engineering, and Maintenance Professionals.

The mining industry covers a wide range of operations, both above and below ground, such as coal, precious metals, non-precious metals, other minerals, and aggregates, sand and stone. People who work in the mining industry know how unforgiving and potentially dangerous these environments can be. It is critical to maintain stable, continuous operations without sacrificing safety or quality.

Fluke makes rugged, reliable, quality tools mining professionals can count on. Tools designed for the mining environment, the professionals who work there, and the challenges they face every day.

See our full line of innovative products at www.fluke.com.au



Fluke 789 ProcessMeter™ doubles your troubleshooting power and is Fluke Connect-enabled

Do a lot more while carrying a lot less, with the Fluke 789 ProcessMeter™

The Fluke 789 ProcessMeter is the ultimate troubleshooting tool for electricians and instrumentation professionals. It combines the functionality of a loop calibrator with the power of a digital multimeter, and the wireless capabilities of Fluke Connect connectivity with optional IR3000FC module. The 789 has a display that's not only twice as large as the Fluke 787B, but also twice as bright with two levels of back lighting. And its built-in, selectable 250 ohm HART® resistor eliminates the need to carry a separate resistor.

The 789 also has a 24-Volt loop supply, which reduces the need to carry a separate power supply when doing offline transmitter testing. Access the Fluke Connect™ mobile app to log data wirelessly to your smart phone and review it from a remote location.

Electrical Engineer

Issues faced:

- System maintenance and testing
- Consistent, quality power delivery from utility or local power generation
- Building, system, and machine downtime prevention

Fluke solutions:

- Fluke Connect®
- Multifunction Process Calibrators
- Process Test Tools
- Pressure Gauges and Calibrators
- Power Quality Analysers
- Insulation Testers
- Earth Ground Testers
- Digital Multimeters
- Insulation Multimeters

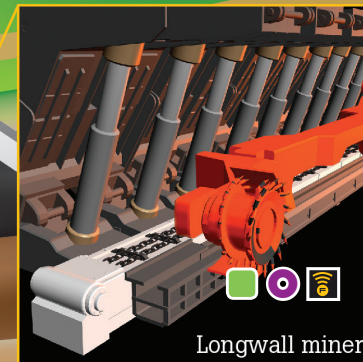
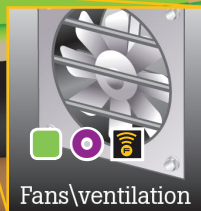
Maintenance Engineer

Issues faced:

- Uptime of systems and equipment
- Quality control
- Maintenance expense
- Personnel safety

Fluke solutions:

- Fluke Connect
- Power Quality Analysers
- Digital Multimeters
- Infrared Cameras
- Vibration Tester



Mechanical Engineer

Issues faced:

- Equipment installation
- Preventative maintenance, and repairs
- Determining optimal machinery replacements

Fluke solutions:

- Fluke Connect
- Infrared Cameras
- Vibration Tester

Electrician

Issues faced:

- Downtime prevention
- Safety, energy maintenance, and troubleshooting
- Power and control installation

Fluke solutions:

- Fluke Connect
- Power Quality Analysers
- Insulation Multimeters
- Insulation Testers
- Clamp Meters
- Digital Multimeters
- Power Loggers
- Infrared Windows

Diagram is not intended to be an exact representation.
Diagram components are not to scale and are for illustration purposes only.

Fluke Mining Solutions

Fluke offers a full line of test and measurement solutions for the mining industry. Go to www.fluke.com.au for detailed information on these products and Fluke mining industry solutions.

Process Calibration Tools			Electrical Test Tools							Infrared and Vibration Tools				Wireless		
Multifunction Process Calibrators	Pressure Gauges and Calibrators	Process Test Tools	Power Quality Analysers	Earth Ground Testers	Power Loggers	Clamp Meters	Insulation Multimeters	Insulation Testers	Digital Multimeters	Expert Infrared Cameras	Professional Infrared Cameras	Infrared Windows	Vibration Tester	Fluke Connect®		
754	726	700G	729	773	430 Series II	1625-2 Kit	1748	376 FC	1587 FC	1555	28 II EX AU	TiX580	Ti480PRO	CV Series	810	

Recommended Mining Solutions

Power Loggers

Best suited for:

- Comprehensive logging, more than 20 separate logging sessions stored on one instrument
- Troubleshooting and performing advanced analysis on power quality issues
- "In-workshop" or "in-the-field" set up and download through PC application software



Infrared Cameras

Best suited for:

- Detection of "hot spots" on electrical panels, motors, VFDs, bearing and conveyor belts
- Measuring and observing temperature in hazardous or inaccessible areas
- Condition inspection of mining machine hydraulics and tracks



Power Quality Analysers

Best suited for:

- Troubleshooting and preventing problems in power generation, transmission and distribution systems
- Conducting load studies to reduce energy usage
- Use with motors, pumps, generators, transformers, compressors and electrical panels



Multifunction Process Calibrators

Best suited for:

- Calibrating and maintaining process instrumentation and control systems
- Troubleshooting 4-20 mA loops, temperature, pressure, frequency and transmitters in one tool
- Performing HART transmitter adjustment



Fluke Connect®

Best suited for:

- Simplifying preventive maintenance programs
- Seamlessly integrating tool data into software
- Diagnosing asset health in the field
- Cloud-based data sharing



Vibration Tester

Best suited for:

- Predictive and condition-based maintenance
- Identifying root cause and diagnosing severity of machine's condition
- Prioritising critical repair and replacement options
- Use with motors, pumps, fans, compressors, belt/chain drives, gearboxes and spindles



Insulation Multimeters

Best suited for:

- Insulation resistance tests
- Troubleshooting and preventive maintenance



Fluke. *The Most Trusted Tools in the World.*

Authorised distributor

Order Placement:

For customer service, call 1300-735-292
 To fax an order, use 1800-067-639
 To email an order, ordersau@thermofisher.com

Contact Us:

For customer service, call 1300-735-292
 For service and calibration, call 1300-736-767
 To order online: thermofisher.com

ThermoFisher
 SCIENTIFIC