



FLUKE®

Solar – Utility Scale

Solar energy is becoming one of the world's fastest-growing sources of power—making the first time that solar energy's growth has surpassed that of all other fuels. Solar technology is improving, and the cost of going solar is dropping rapidly. Solar technicians and managers need to be able to install and service equipment quickly, safely and efficiently.

Fluke tools perform like champions in the most challenging utility-scale solar environments. You can depend on Fluke tools to keep your world up and running.

Solar Technician/Installer

Focus:

- Mechanical and electrical design
- Conduct commissioning
- Troubleshooting

Job needs:

- ▲ Irradiance meter
- Digital multimeter
- Clamp meter
- Temperature/Thermal
- Insulation and power quality
- Insulated hand tools
- ▼ Earth ground

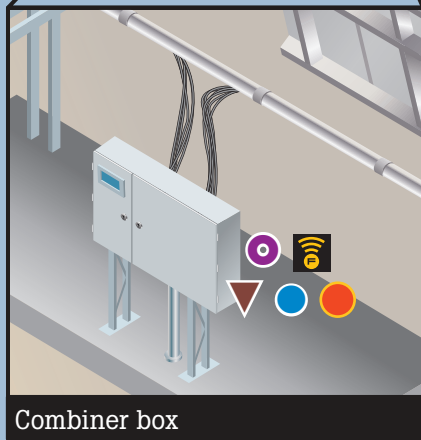
PV Designer/Electrician

Focus:

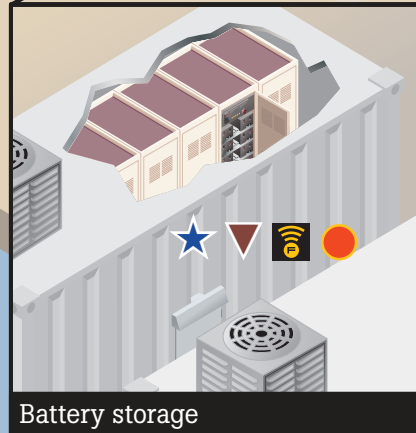
- Conduct commissioning
- Preventative maintenance
- Troubleshooting

Job needs:

- ▲ Irradiance meter
- Digital multimeter
- Clamp meter
- Temperature/Thermal
- Insulation and power quality
- Insulated hand tools
- ▼ Earth ground



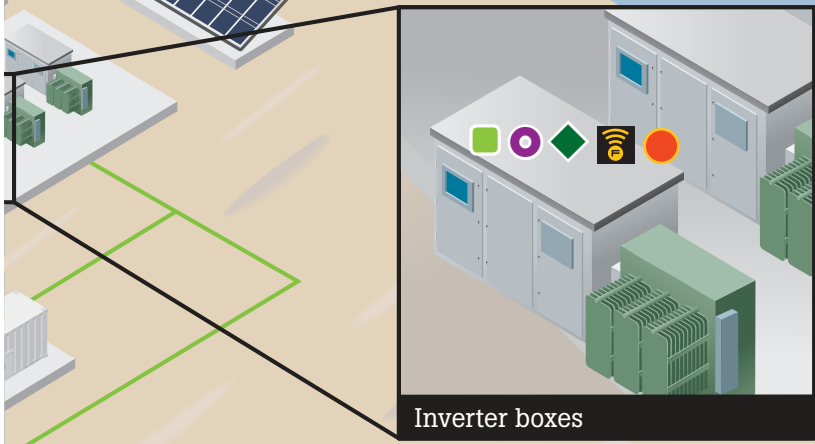
Combiner box



Battery storage

Solar energy solutions

Amprobe	Electrical Measurement Tools					Insulation and Power Quality			
Irradiance meter	Digital multimeter	Digital multimeter	Thermal multimeter	Clamp meter	FC wireless multimeter kit	Insulation tester	Insulation tester	Insulation tester	P
									
Solar 100	87V	179	279 FC	376 FC	v3003FC Kit	1507	1587 FC	1555 FC	



Inverter boxes

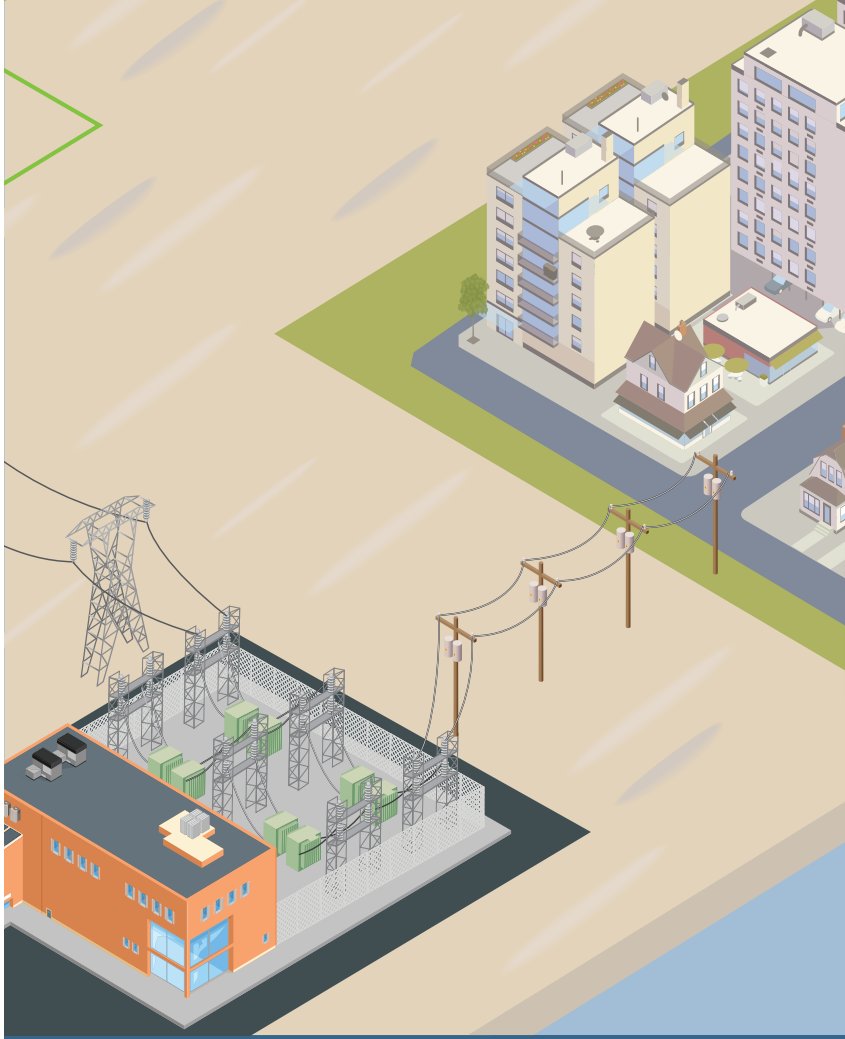
Solar Advisor

Focus:

- Mechanical and electric design
- Troubleshooting

Job needs:

- ▲ Irradiance meter
- Digital multimeter
- Clamp meter
- Temperature/Thermal



Operations and Maintenance Manager

Focus:

- Lead preventative maintenance
- Troubleshooting
- Monitoring

Job needs:

- ▲ Irradiance meter
- Digital multimeter
- Clamp meter
- Temperature/Thermal
- Insulation and power quality
- ★ Battery analyser
- Insulated hand tools

Learn how Fluke solutions can save you time and money while increasing your productivity at www.fluke.com.au

	Temperature	Battery Analyser	Earth Ground	Software	Accessories		
Power quality analyser	Thermal imager	Temperature	Battery analyser	Earth ground	Fluke Connect™	Insulated hand tools	Backpack
435 II	Ti480 PRO	64 MAX	BT521	1625-2			Pack30

Recommended solar energy solutions

Fluke Connect

Best suited for:

- Simplifying preventive maintenance programs
- Seamlessly integrating tool data into software
- Diagnosing asset health in the field
- Cloud-based data sharing



Clamp meters

Best suited for:

- Verifying the presence of AC/DC load current, voltage and continuity
- Measuring 1000 A AC/DC (2500 A AC with iFlex) in combiner boxes, inverters, breakers or disconnects
- Measuring loads and line frequency in circuits



Power quality analysers

Best suited for:

- Troubleshooting and preventing problems in power generation, transmission and distribution systems
- Conducting load studies to reduce energy usage



Digital multimeters

Best suited for:

- Combiner box and inverter installation and troubleshooting
- Quick voltage detection
- Environments with both AC and DC or ghost voltages



Earth ground

Best suited for:

- Confirmation that the earth resistance meets safety compliance
- Validation that the grounding system has not deteriorated



Thermal imagers

Best suited for:

- Inspection of PV modules for troubleshooting polarity, electrical panels, and breaker panels for detection of "hot spots"
- Monitoring cooling fluid levels such as dielectric oils for transformers



Insulated hand tools

Best suited for:

- 1000 V AC and 1500 V DC
- Critical part of NFPA 70E



Amprobe, a Fluke company - Irradiance meter

Best suited for:

- Optimise the placement of solar power systems and verify window efficiency
- Measure solar output used to calculate overall energy, efficiency and placement of solar systems



Battery analysers

Best suited for:

- Troubleshooting and performance testing on stationary batteries and battery banks
- Designed for measurement on stationary batteries of all types



Fluke. Keeping your world up and running.®

©2019 Fluke Corporation. Specifications subject to change without notice. Printed in U.S.A. 6/2019 6012167b-en

Authorised distributor

Order Placement:

For customer service, call 1300-735-292
To fax an order, use 1800-067-639
To email an order, ordersau@thermofisher.com

Contact Us:

For customer service, call 1300-735-292
For service and calibration, call 1300-736-767
To order online: thermofisher.com

ThermoFisher
SCIENTIFIC