



**FLUKE®**

## **Utilities—Energy Solutions**

### **Fluke solutions for accurate information and consistent performance**

The utilities industry is a uniquely demanding and frequently dangerous environment. Whether you work in power generation, transmission, distribution, or installation, you can't afford test or measurement errors.

Fluke tools are built to the highest safety and reliability standards. Depend on Fluke, the industry standard against which all other tools are measured.

**See our full line of innovative products at [www.fluke.com.au](http://www.fluke.com.au)**

**ThermoFisher**  
SCIENTIFIC

## Facility Maintenance/ Process Technician

### Issues faced:

- Ensuring continuous and predictable uptime and downtime
- Safety of personnel and the utility environment
- Budget restrictions
- Immediate response and repair to process interruptions

### Fluke solutions:

- 📶 Fluke Connect®
- ▲ Multifunction Process Calibrators
- ▲ Process Test Tools
- Digital Multimeters
- Clamp Meters
- Power Quality Analysers
- Portable Oscilloscopes
- Insulation Testers
- Infrared Cameras and SF<sub>6</sub> Gas Detectors
- Vibration Tester
- Alignment Tool

## Power Quality Technician

### Issues faced:

- Network optimisation
- Customer downtime prevention

### Fluke solutions:

- 📶 Fluke Connect
- Digital Multimeters
- Clamp Meters
- Earth Ground Testers
- Power Quality Analysers
- Power Loggers
- Infrared Cameras

## Meter Shop Technician

### Issues faced:

- Voltage quality
- Accurate revenue measurements

### Fluke solutions:

- 📶 Fluke Connect
- Digital Multimeters
- Clamp Meters
- Power Quality Analysers
- Earth Ground Clamp Meters
- Alignment Tool
- Infrared Cameras

## Substation Technician

### Issues faced:

- Preventative maintenance
- Equipment protection with proper grounding
- Transformer breaker and relay performance

### Fluke solutions:

- 📶 Fluke Connect
- Digital Multimeters
- Clamp Meters
- Earth Ground Testers
- Insulation Testers
- Infrared Cameras and SF<sub>6</sub> Gas Detectors
- Infrared Windows
- High Voltage Tester

## Lineman

### Issues faced:

- Safety during troubleshooting and connectivity
- Accurate and consistent data

### Fluke solutions:

- 📶 Fluke Connect
- Digital Multimeters
- Clamp Meters
- Infrared Cameras

## Energy Audit Technician

### Issues faced:

- Areas of improper insulation
- Unwanted air infiltration and exfiltration
- Quality energy audits

### Fluke solutions:

- 📶 Fluke Connect
- Earth Ground Testers
- Power Quality Analysers
- Infrared Cameras

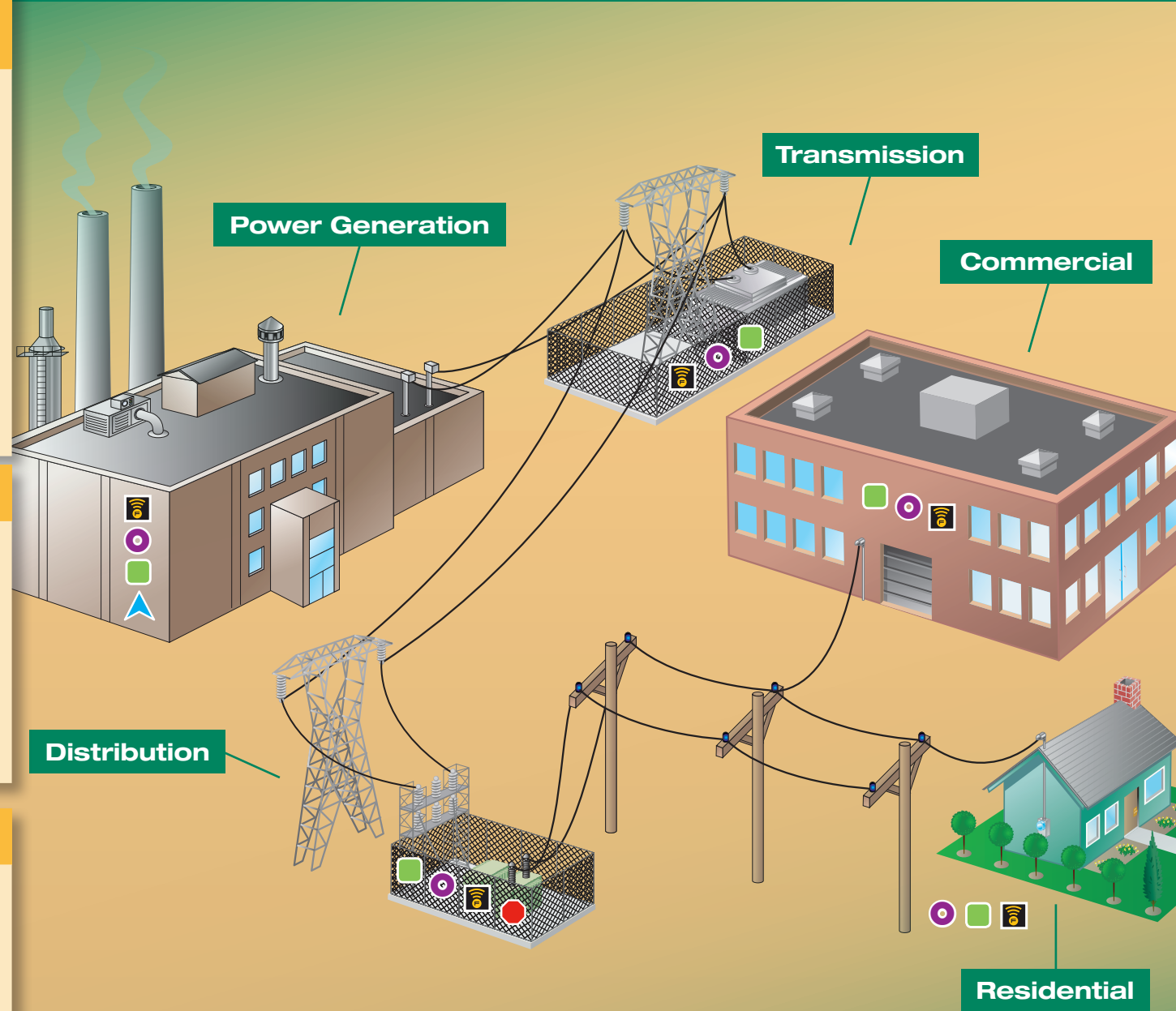


Diagram is not intended to be an exact representation.  
Diagram components are not to scale and are for illustration purposes only.

## Fluke Utilities Solutions

Learn how Fluke solutions can save you time and money while increasing your productivity, visit [www.fluke.com.au](http://www.fluke.com.au).

Process Calibration Tools		Electrical Test Tools								Infrared and Vibration Tools					Wireless	Amprobe
Multifunction Process Calibrators	Process Test Tools	Power Quality Analysers	Portable Oscilloscopes	Power Loggers	Clamp Meters	Insulation Testers	Earth Ground Clamp Meters	Earth Ground Testers	Digital Multimeters	Expert Infrared Cameras	Professional Infrared Cameras	Infrared windows	Vibration Tester	Alignment Tool	Fluke Connect®	High Voltage Tester
754	726	773	430 Series II	190 Series II	1748	376 FC	1555	1630-2 FC	1625-2 Kit	87V	TiX580	Ti450 SF6	CV Series	810	830	TIC 300 PRO

# Recommended Utility Solutions

## Fluke Connect®

### Best suited for:

- Simplifying preventive maintenance programs
- Seamlessly integrating tool data into software
- Diagnosing asset health in the field
- Cloud-based data sharing



## Infrared Windows

### Best suited for:

- Reducing time needed to conduct regular infrared inspections
- Ensuring employee safety by eliminating exposure to live equipment
- Improving productivity by reducing number of technicians needed to conduct inspections
- Use with electrical cabinets, distribution switchgear, transformers, generator connections and communication equipment racks



## Vibration Tester

### Best suited for:

- Predictive and condition-based maintenance
- Identifying root cause and diagnosing severity of machine's condition
- Prioritising critical repair and replacement options
- Use with motors, pumps, fans, compressors, belt/chain drives, gearboxes and spindles



## Clamp Meters

### Best suited for:

- Verifying the presence of load current, AC/DC voltage and continuity
- Measuring 1000 A AC/DC (2500 A AC with iFlex) in motors, pumps, compressors, fans, blowers, vaults and bus bars
- Measuring loads and line frequency in circuits



## Power Quality Analysers

### Best suited for:

- Troubleshooting and preventing problems in power generation, transmission and distribution systems
- Conducting load studies to reduce energy usage
- Use with motors, pumps, generators, transformers, compressors and electrical panels



## Power Loggers

### Best suited for:

- Comprehensive logging, more than 20 separate logging sessions stored on one instrument
- Troubleshooting and performing advanced analysis on power quality issues
- "In-workshop" or "in-the-field" set up and download through PC application software



## Infrared Cameras & SF6 Gas Detectors

### Best suited for:

- Inspection of electrical panels and detection of "hot spots" on breaker panels and bus work
- Monitoring cooling fluid levels such as dielectric oils for transformers
- Use with steam traps, electrical panels, motors and VFDs
- Detect and pinpoint exact location of SF6 leak without shutting down equipment



## Insulation Testers

### Best suited for:

- Wide range of tests including simple spot checks, timed tests and breakdown tests
- Insulation resistance testing up to 10 kV
- Use with switchgear, motors, generators and cables



Fluke. The Most Trusted Tools in the World.

## Authorised distributor

### Order Placement:

For customer service, call 1300-735-292  
 To fax an order, use 1800-067-639  
 To email an order, ordersau@thermofisher.com

### Contact Us:

For customer service, call 1300-735-292  
 For service and calibration, call 1300-736-767  
 To order online: thermofisher.com.au

**ThermoFisher**  
 SCIENTIFIC