

Fast-Freeze® Flasks



Fast-Freeze Flasks. Select your flasks based on your sample sizes. Flasks should be filled to no more than one-third of their volume. Each Fast-Freeze Flask includes a rubber top, glass bottom and a supply of filter paper. Amber-colored glass helps to protect light-sensitive samples. Tops, bottoms and filter paper are available to purchase separately as replacement components at labconco.com. **Adapters are required (not included) to attach flasks to freeze dry valve ports.**

Compatible with all major brands of laboratory freeze dry apparatus

Variety of adapters available

Top seals easily. The flexible silicone rubber top snaps on and off easily, and provides reliable, high vacuum seal.

No complex filter retainer is necessary. For those who use filters, they are easily inserted between adapter and top of flask. One hundred filters supplied with each flask.

Only two pieces per flask. The complete Fast-Freeze Flask has only two components:

- High strength borosilicate glass bottom to withstand extreme temperatures and high vacuum
- Flexible, non-contaminating silicone rubber top

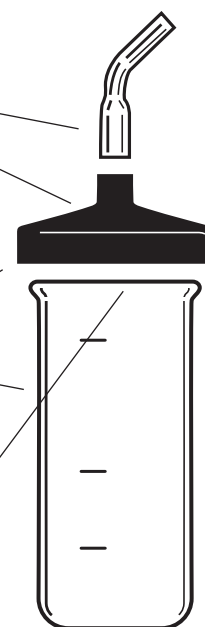
Wide mouth opening loads fast, cleans easily.

Available in 10 convenient sizes

Entire flask may be autoclaved.

No vacuum grease necessary

Flat bottom reduces spills, provides better balance.



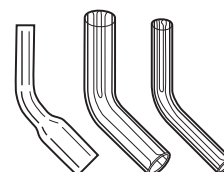
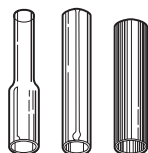
Flask Size	Clear Flask Catalog Number	Amber Flask Catalog Number	Flask Top Diameter*	Dimensions/Adapter (h x d)	Shipping Weight
40 ml	7540000		1/2"	76 x 34 mm	1.0 lb. (0.5 kg)
80 ml	7540200		1/2"	115 x 34 mm	1.0 lb. (0.5 kg)
120 ml	7540300		3/4"	68 x 59.2 mm	1.0 lb. (0.5 kg)
150 ml	7540400		3/4"	85 x 59.2 mm	1.0 lb. (0.5 kg)
300 ml	7540600	7540601	3/4"	145 x 59.2 mm	1.5 lbs. (0.7 kg)
600 ml	7540800	7540801	3/4"	135 x 90.2 mm	2.0 lbs. (0.9 kg)
750 ml	7541100	7541101	3/4"	162 x 90.2 mm	2.0 lbs. (0.9 kg)
900 ml	7540900	7540901	3/4"	190 x 90.2 mm	2.2 lbs. (1.0 kg)
1200 ml	7541000		3/4"	240 x 90.2 mm	2.2 lbs. (1.0 kg)
2000 ml	7541200		3/4"	380 x 90.2 mm	2.2 lbs. (1.0 kg)

Visit labconco.com for ordering information on Lyph-Lock® Flasks and replacement Fast-Freeze Flask tops and bottoms.

*Valves on the freeze dryers, drying chambers and manifolds fit adapters with both 1/2" and 3/4" dia.

Fast-Freeze® Accessories

Fast-Freeze Flask Adapters. Required for operation. Connect Fast-Freeze Flasks to the valve ports on your drying chamber or manifold. Borosilicate glass or stainless steel adapters in 1/2" and 3/4" dia. Shipping weight 0.5 lb. (0.2 kg)



Description	Straight Adapter
Stainless Steel	
1/2" flask top to 1/2" valve*	7547000
3/4" flask top to 3/4" valve*	7547200
Borosilicate Glass	
1/2" flask top to 1/2" valve*	7545000
3/4" flask top to 3/4" valve*	7545200
1/2" flask top to 3/4" valve*	7545400
3/4" flask top to 1/2" valve*	7545400

Description	45° Bend Adapter
Stainless Steel	
1/2" flask top to 1/2" valve*	7547400
3/4" flask top to 3/4" valve*	7547600
Borosilicate Glass	
1/2" flask top to 1/2" valve*	7545600
3/4" flask top to 3/4" valve*	7545800
1/2" flask top to 3/4" valve*	7546000
3/4" flask top to 1/2" valve*	7546000

7543900—Aseptic Adapter. For use with 120 ml to 2000 ml Fast-Freeze Flasks in place of an adapter. Allows a flask to be filled under sterile conditions prior to lyophilization and transported in a closed position before and after lyophilization. 3/4" OD for connection between a Fast-Freeze Flask with 3/4" top dia. and a valve port on any drying chamber or manifold in this catalog. Corrosion-resistant PTFE. 1.75" w x 0.75" d x 3.2" h (4.4 x 1.9 x 8.1 cm). Shipping weight 0.5 lb. (0.2 kg)



7540100—FreeZone Freeze Dry Glassware Kit. Includes one each 600 ml Fast-Freeze Flask 7540800, one each 300 ml Fast-Freeze Flask 7540600, one each 3/4" dia. Stainless Steel Straight Adapter 7547200, and one each 3/4" dia. Stainless Steel 45° Bend Adapter 7547600. Shipping weight 5.0 lbs. (2.0 kg)

7544810—Replacement Filter Paper. 1000 (10 packages of 100). 1" dia. (28 mm). Pore size 17 microns. Shipping weight 0.5 lb. (0.2 kg)

7543800—Stainless Steel Adapter 29/32. Allows connection of 29/32 round bottom flasks to valve ports on drying chambers and manifolds. Shipping weight 1.0 lb. (0.5 kg)



*Valves on the freeze dryers, drying chambers and manifolds fit adapters with both 1/2" and 3/4" dia.

Fast-Freeze® Accessories



7442600

7442700

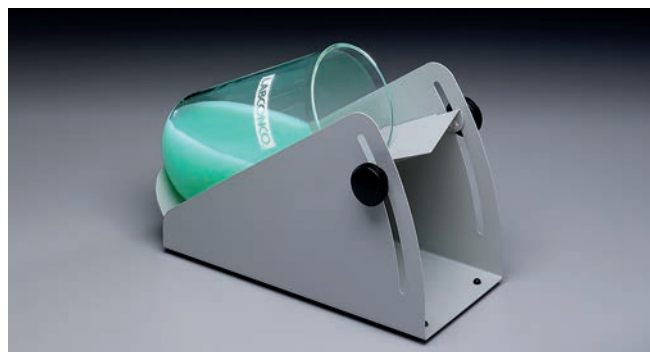


7379400

7379500

Tube Holders. Stainless steel. Hold tubes in an upright position inside a 750 ml or larger Fast-Freeze Flask or Lyph-Lock Flask. **Tubes and glassware are not included.** Shipping weight 1.0 lb. (0.5 kg)

Catalog Number	Tube Capacity	Tube Description	Dimensions (h x d)	For Use with Flask	Shipping Weight
7442600	15	12 or 13 mm dia.	144 x 83.3 mm	750 ml or larger	1.0 lb. (0.5 kg)
7442700	30	0.5, 1.0 and 2.0 ml microcentrifuge	139 x 83.3 mm	750 ml or larger	1.0 lb. (0.5 kg)
7379400	9	15 ml, 17 x 20 mm	170 x 88.9 mm	900 ml or larger	1.0 lb. (0.5 kg)
7379500	4	50 ml, 30 x 116 mm	170 x 88.9 mm	900 ml or larger	1.0 lb. (0.5 kg)



7369700—Slant Freeze Flask Holder. Slant freezing increases the surface area to volume ratio, maximizing freeze drying rate. Angle is manually adjustable from 5° to 35°. Powder-coated steel. 10.4" w x 4.5" d x 6.7" h (26.4 x 11.4 x 17.0 cm). Shipping weight 3.5 lbs. (1.6 kg)



Flask Holders. Help to prevent sample meltback. Hold small Fast-Freeze Flask containing the sample inside a larger Fast-Freeze Flask so that sample is insulated. Stainless steel. **Flasks not included.** Shipping weight 1.0 lb. (0.5 kg)

Catalog Number	Description
7543300	Small Flask Holder Compatible with inner flasks 7540000 (40 ml) and 7540200 (80 ml) and outer flasks 7541100 and 7541101 (750 ml) and 7540900 and 7540901 (900 ml).
7543400	Large Flask Holder Compatible with inner flasks 7540300 (120 ml), 7542400 (150 ml) and 7540600 and 7540601 (300 ml) and outer flasks 7540900 and 7540901 (900 ml) and 7541000 (1200 ml).

Authorised distributor

In Australia:
For customer service, call 1300-735-292
To fax an order, use 1800-067-639
To email an order, ordersau@thermofisher.com

In New Zealand:
For customer service, call 0800-933-966
To fax an order, use 0800-329-246
To email an order, ordersnz@thermofisher.com

ThermoFisher
SCIENTIFIC