

## String Floor Mops

Micronova offers a selection of string mops for cleaning large surface areas quickly and efficiently.

Whether laying down disinfectant or cleaning to a dry finish, different designs and fabrics address the various protocols found in many cleaning scenarios from microelectronic fabs to food processing and pharmaceutical production.



### PG9-12 PolyGen™ Mop

An economical low-linting polyester mop. The herringbone weave in the looped strands ensures no raw edges, guaranteeing low particulation. The PolyGen is designed to cover large areas and to apply disinfectants that require extended drying time. The PolyGen holds up to strong disinfectants and can be autoclaved.

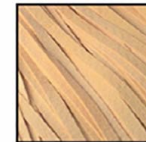
*For sterile applications, ask about our irradiated PolyGen Mop - Part Number PG9-12IR*

### MZLM5-12 LoopMop™

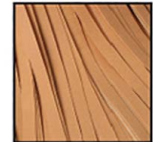
A functional knitted polyester mop for applying disinfectant in pharmaceutical, aseptic processing and medical device applications. The tubular strands of the mop draw up moisture efficiently and ensure that disinfectants are laid down for the required contact time. The durable construction of the mop allows it to be laundered, autoclaved if necessary, and used several times. Also available irradiated.

Part No.	Description
PG9-12	PolyGen Mop
PG9-12IR	PolyGen Mop Irradiated
MZLM5-12	M-Zone LoopMop
MZLM5-12IR	M-Zone LoopMop Irradiated
ML-1	MicroLoop Mop PVA
ML-9	MicroLoop Mop PolyGen
CRM-1	MicroMop PVA
CRM-2	MicroMop NovaLite
CRM-6	MicroMop Polyester
CRM-66	MicroMop Polyester
MICRO21-1	MicroMop Deluxe PVA
PPM4-MM15	PharmaPly Mop
PPM4-MM15IR	PharmaPly Mop Irradiated
CRMS-LB	NovaSorb Mop
CRMS-LBIR	NovaSorb Mop Irradiated
QDMH-1	MicroMop Adapter
SSU-1	Stainless Steel Ext Handle 36"-72"
MH-1	MicroMop Handle Fiberglass and Polypropylene
SSA-3	Acme Thread Adapter for use with ML-1 & ML-9 and SSU-1 Handles

### Mop Head and Mop Cover Materials (See page 5 for details)



**PVA**  
Low-linting and absorbent. Non-autoclavable



**NovaLite**  
Autoclavable and usable with strong disinfectants



**PolyGen**  
Economical, autoclavable, low-linting



**NovaPoly**  
Autoclavable, low-linting



### MicroLoop™ Mops

A functional looped mop which can be used for service areas outside the cleanroom and for "clean build" projects. The MicroLoop heads attach to the stainless steel handle by way of the SSA-3 Acme Thread Adapter (see page 8).

#### ML-1 MicroLoop PVA

For cleanroom support, post-construction and clean-build projects.

#### ML-9 MicroLoop PolyGen

An economical polyester mop head ideal for "Hazmat" and general spill control.

## CRM-1 MicroMop® PVA

This mop offers exceptional absorbency and low linting features. With an absorbency of 600% and a drying time of 10-12 seconds, the CRM-1 is an obvious choice for high-tech applications where the need for dry, residue-free surfaces is paramount.



## CRM-6 MicroMop® Polyester

A substantial mop which efficiently wicks away moisture and is laser cut to minimize particulate. A concealed foam brick at the top of the mop offers a dual-cleaning action for high traffic areas and heavy duty cleaning. The CRM-6 will hold up to strong disinfectants and steam sterilization.



## CRM-66 MicroMop® Polyester Die-Cut (not shown)

## MICRO21-1 MicroMop® PVA

The MICRO21-1 is a perforated version of the standard CRM-1 mop. It offers increased absorbency and wicking with its perforated strands which increase the surface area of mop fabric in contact with the floor.



## PPM4-MM15 PharmaPly™ Mop

This polyester/ rayon blend mop combines superior absorbency with the clean, low-linting qualities of polyester. Ideal for cleaning and disinfecting pharmaceutical support areas, hospitals and laboratories with stringent cleaning routines. Holds up to strong disinfectants and can be autoclaved. Available Irradiated.



## CRM-2 MicroMop® Lite

A sturdy mop for controlled environments and cleanroom support areas. The latex rayon blend will retain its absorbency and efficiency over several uses. The CRM-2 can be autoclaved for medical and sterile applications.



## MZCRMS11-12 M-Zone™ MegaSorb™ Mop

An innovative low-linting and highly absorbent microfiber mop, based on the traditional string mop design. The MegaSorb is made up of microfiber tubes which draw up and trap small particles more effectively than standard poly/cotton mops which roll over the dirt. Ideal for laying down strong disinfectants and drawing up spills. Can be laundered and re-used and holds up to autoclave and gamma-irradiation.





# Cleanroom Mops



## Flat Head Mops for Floor and Wall Cleaning

### SlimLine™ Mop

- Electropolished steel frame
- Rotates 180° in both directions
- Easy coverage of floors, walls and corners
- Available in three sizes with a choice of slipcovers
- Use with SlimLine or Slim "T" bucket systems
- Available irradiated

PadMop™ and DryMop™ Shown Below are Compatible with the QDSL SlimLine™ Mop Adapter Series

### PadMop™

- Bio-tech / aseptic processing
- Low profile design
- Angled head for easy application of disinfectant / detergent
- Choice of widths
- Launderable / autoclavable
- Available irradiated



### DryMop™

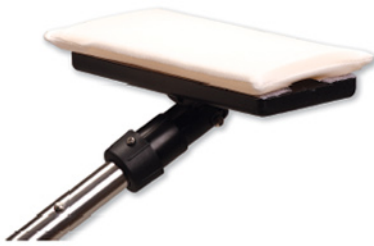
- Cleans to a dry finish
- Low-profile swivel design
- Angled head for "hard-to-reach" areas
- No need for buckets and wringers
- Choice of widths
- Available in NovaLite and PVA material
- Available irradiated



### T-Mop™

- Low profile mop for cleaning floors, walls and ceilings
- Rotates 180° in both directions
- Wide surface is ideal for general cleaning and applying disinfectants in sterile environments
- Cleans under equipment and reaches awkward angles on shelving and narrow chambers
- Available in three sizes with a choice of slipcovers
- Available irradiated





### PilloMop™

- Attached to the QDPH-1 Adapter with polyester hook and loop strips
- Standard size head is 9" x 5" with custom sizes available
- Head moves easily up and down and from side to side
- Ideal for reaching awkward corners and bends and for cleaning shelving and narrow chambers



### NovaMop™

- Lightweight mop with a foam interior
- Available in three slipcover choices
- Head free-rolls in one direction and locks on the reverse roll. This squeegee motion effectively dries the surface being cleaned
- For use on floors, walls and ceilings

**In super stringent applications it's important to distinguish between mops used for different surfaces.**

Micronova has a selection of string and flat head mops (see pages 2 through 5) in various sizes so that operators can guard against cross-contamination while cleaning.

Part No.	Description
<b>SlimLine™ Mop</b>	
QDSL-9, 14 & 18	SlimLine Mop Adapter 9", 14" or 18"
SLSC6-9, 14 & 18	NovaPoly Cover 9", 14" or 18"
SLSC6-9, 14 & 18IR	NovaPoly Cover 9", 14" or 18" Irradiated
SLSC620-9, 14 & 18	NovaPoly/MegaTex Cover 9", 14" or 18"
SLSC6AA-9, 14 & 18	NovaPoly/MicroFiber Cover 9", 14" or 18"
<b>DryMop™</b>	
DM61-9, 14 & 18	NovaPoly/PVA Cover 9", 14" or 18"
DM61-9, 14 & 18IR	NovaPoly/PVA Cover 9", 14" or 18" Irradiated
DM62-9, 14 & 18	NovaPoly/Novalite Cover 9", 14" or 18"
DM62-9, 14 & 18IR	NovaPoly/Novalite Cover 9", 14" or 18" Irradiated
<b>PadMop™</b>	
SLP6-9, 14 & 18	NovaPoly PadMop 9", 14" or 18"
SLP6-9, 14 & 18IR	NovaPoly PadMop 9", 14" or 18" Irradiated
SLP620-9, 14 & 18	NovaPoly/MegaTex Cover 9", 14" or 18"
SLP6AA-9, 14 & 18	NovaPoly/MicroFiber Cover 9", 14" or 18"
<b>T-Mop™</b>	
QDT-10, 14 & 18	T-Mop Adapter 10", 14" or 18"
QDST-10, 14 & 18	Square T-Mop Adapter 10", 14" or 18"
T1-10, 14 & 18	T-Mop Cover PVA 10", 14" or 18"
T2-10, 14 & 18	T-Mop Cover Novalite 10", 14" or 18"
T6-10, 14 & 18	T-Mop Cover NovaPoly 10", 14" or 18"
T6-10, 14 & 18IR	T-Mop Cover NovaPoly 10", 14" or 18" Irradiated
T612-10, 14, & 18	NovaPoly Cover, Thick Foam 10", 14" or 18"
T2012-10, 14, & 18	MegaTex Cover, Thick Foam 10", 14" or 18"
TAA-10, 14, & 18	MicroFiber Cover 10", 14" or 18"
<b>PilloMop™</b>	
QDPH-1	PilloMop Adapter
PM-1	PilloMop PVA
PM-2	PilloMop Novalite
PM-6	PilloMop NovaPoly
PM-648	PilloMop NovaPoly
PMC-648	PilloMop NovaPoly Slip Cover
<b>NovaMop™</b>	
QDNH-1	NovaMop Adapter
NM-1	NovaMop PVA
NM-2	NovaMop Novalite
NM-6	NovaMop NovaPoly

### Other Gamma Irradiated Mops (not shown):

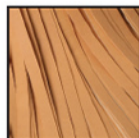
- NovaPoly
- Novalite
- MegaTex
- MicroFiber Mops

When ordering, add the letters IR after the Part Number

## Mop Head and Mop Cover Materials



**PVA**  
Bonded, non-woven Polyvinyl Alcohol. 600% absorbency. Low linting and extremely durable.



**Novalite**  
Latex exterior bonded with rayon. 400% absorbency. Can be used with strong disinfectants. Autoclavable.



**PolyGen**  
100% Polyester Herringbone Weave provides greater wicking. Can be used with strong disinfectants. Autoclavable.



**NovaPoly**  
100% Polyester. Can be used with strong disinfectants. Autoclavable.



**MicroFiber**  
80% Polyester 20% Polyamide. 400% absorbency. Can be used with strong disinfectants. Autoclavable.



**MegaTex**  
Non-woven Polyamide textured thermo bonded surface. Can be used with strong disinfectants. Autoclavable.



## Special Tools & Accessories

### Isolator Tool™

- For Isolators, Containment and Bio-Hoods in Cleanroom and Buffer Areas
- Low Profile Design
- Angled head for easy application of disinfectant or detergent
- Selection of Widths (9", 14", 18")
- Modular and extendable handles for small pass thru and extended "reach"
- Launderable/Autoclavable Slipcovers
- Slipcovers Available Irradiated

Part No.	Description
QDIT-09, 14 & 18	Isolator Tool Adapter 9", 14" or 18"
ITC6-09, 14 & 18	NovaPoly Cover 9", 14" or 18"
ITC6-09IR, 14IR & 18IR	NovaPoly Cover Irradiated 9", 14" or 18"
ITC620-9, 14 & 18	NovaPoly/MegaTex Cover 9", 14" or 18"



### Over Under Accordion Handle

A modular, angled adapter that can be used at "full-stretch" or locked at a preferred angle to reach into confined spaces and then folded back down to pass easily in and out of docking devices, pass-thrus, and chambers. Fits all the Micronova mop adapters for a whole range of cleaning applications.

Part No.	Description
QDAH-13	13" Long Section
QDAH-19	19" Long Section



### NovaSqueegee™ Adapter

For applications cleaning around heavy process equipment or calibrated apparatus. Features a flexible polyethylene interior with a choice of three slip covers.

Part No.	Description
QDNS-12, 18, & 22	NovaSqueegee Adapter 12", 18" & 22" Blade
NS-12, 18, & 22	12", 18" & 22" PVA Blade
RS-12, 18, & 22	12", 18" & 22" Rubber Blade

### FlexBrush Adapter

Bendable brush with polyester cover. Use with extendable handle or stand alone for cleaning overhead pipes, coving and deep tanks. Acme threaded end. Cover is autoclavable.

Part No.	Description
FB-12	12" Long FlexBrush Adapter
FBC-611	2" x 12" FlexBrush NovaPoly Cover
FBC-611IR	2" x 12" FlexBrush NovaPoly Cover Irradiated



### MegaSwat™ Adapter

For applications cleaning around heavy process equipment or calibrated apparatus. Features a flexible polyethylene interior with a choice of three slip covers.

Part No.	Description
QDMS-1	MegaSwat Adapter, 2-1/2" x 16" Blade
MS-1	MegaSwat Cover - PVA
MS-2	MegaSwat Cover - NovaLite
MS-6	MegaSwat Cover - NovaPoly

Also available in a horizontal format for cleaning the inside of tanks and chambers.

QDMST-18	MegaSwat Adapter, 2" x 18" Blade
MST-618	MegaSwat Cover - NovaPoly
QDMS-8	MegaSwat Adapter, 3" x 8" Blade
MS6-8	MegaSwat Cover - NovaPoly

Polyester covers available irradiated, add IR to end of part number when ordering.



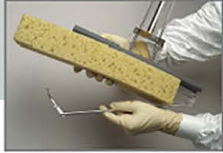
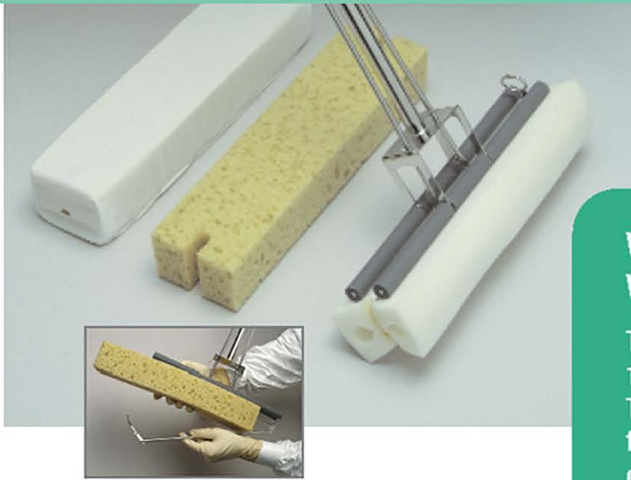
### MegaTip™ Swab

A substantial cleaning "swab," the MegaTip is a 4" x 1.5" probe which, when used with the Univesal Handle, will easily reach to clean lighting recesses, corners and angles between walls and ceilings and other areas where a mop or wiping area is not ideal.

Also available in custom sizes. Call for details.

Part No.	Description
QDMT-1	MegaTip Adapter, 9" long
MT-1	MegaTip Cover - PVA
MT-2	MegaTip Cover - NovaLite
MT-6	MegaTip Cover - NovaPoly
MT-6IR	MegaTip Cover - NovaPoly Irradiated

## Self-Wringing Mops



**Why is the PowerHead Handle only 28 inches?  
Why do I have to buy a separate handle?**

The PowerHead was designed to clean walls and floors. Reaching a 12 foot wall or high ceiling with the standard mop handle is difficult. To solve this, we made it possible for the self-wringing PowerHead to fit any of the SSU- series handles. This way the operator can customize the handle length to fit the need. For a standard length for floors, add the SSU-6 handle.

### PowerHead™

The **PowerHead** family of products offers a variety of different mop heads for use with our durable stainless steel handle. The disposable mop heads come in different types and densities of foam and a variety of fabric coverings.

Part No.	Description	Units/Pack
QDPHH-10 & 14	PowerHead 10" & 14"	1
PHU-120 & 124	Absorbent Foam 10" & 14"	1
PHU-150 & 154	Wide Pore Foam 10" & 14"	1
PHG-150 & 154	NovaPoly Covered Foam 10" & 14"	1

The **PowerHead Handle** is constructed of electropolished stainless steel, which holds and wrings the various PowerHeads. Available in 10" and 14" widths, the entire unit is autoclavable and has a quick disconnect fitting which allows it to be used with the standard or extendible range of Universal Handles.

QDPHH-10	PowerHead Handle 10" x 28"	1
QDPHH-14	PowerHead Handle 14" x 28"	1
SSU-6	25" Universal Handle	1



### Twist Mop

An economical mop system which cuts back on cleaning time and unnecessary hardware by incorporating a simple self-wringing action in the TH-1 handle. The handle is constructed of aluminum and plastic and can be autoclaved. The mop head is available in two different fabrics to cope with varying cleanroom protocols.

Part No.	Description	Units/Pack
TM-1	Twist Mop PVA	1
TM-9	Twist Mop PolyGen	1



### Curtain Cleaner™

A simple, effective design to clean cleanroom curtains and softwall enclosures. The cleaning head clamps the curtain at the top and then slides down to apply or squeeze the cleaning agent on both sides of the curtain. The Curtain Cleaner measures 12" and has a selection of different slipcovers for cleaning in cleanroom support, critical and sterile environments.

Part No.	Description
CCH-24	Curtain Cleaner Handle (24" length)
CCH-48	Curtain Cleaner Handle (48" length)
CCSC-1	PVA Slipcover
CCSC-2	NovaLite Slipcover
CCSC-6	NovaPoly Slipcover
CCSC-6IR	NovaPoly Slipcover Irradiated
CCSC-68	PolyMesh Slipcover
CCSC-20	MegaTex Slipcover
CCSC-AA	MicroFiber Slipcover