

## Cyclin D1 (Clone SP4)

### Rabbit Monoclonal Antibody

Cat. #RM-9104-S0, -S1, or -S (0.1ml, 0.5ml, or 1.0ml Supernatant)

Cat. #RM-9104-R7 (7.0ml) (Ready-to-Use for Immunohistochemical Staining)

Cat. #RM-9104-PCL (0.1ml) (Positive Control for Western Blot)

Please note this data sheet has been changed effective March 29, 2010

**Description:** Cyclin D1 or PRAD-1 or bcl-1 is one of the key cell cycle regulators, and functions in association with cdk4 and / or cdk6 by phosphorylating the Rb protein. It is a putative proto-oncogene overexpressed in a wide variety of human neoplasms including mantle cell lymphomas (MCL).

**Comments:** Clone SP4 is excellent for staining of formalin/paraffin tissue.

**Mol. Wt. Of Antigen:** 36kDa

**Epitope:** C-terminus

**Ig Isotype:** Rabbit IgG

**Species Reactivity:** Human. Other species not tested.

**Clone Designation:** SP4

### Immunogen:

A synthetic peptide from C-terminus of human cyclin D1

### Applications and Suggested Dilutions:

- Western Blotting
- Immunohistology (Formalin/paraffin)

(Use Ab 1:25-50 for 30 min at RT using UltraVision LP detection systems)

(Use Ab 1: 50 for 20 min at RT with UltraVision Quanto detection systems)

- \* [Staining of formalin-fixed tissues requires boiling tissue sections in 10mM citrate buffer, pH 6.0 for 10-20 min followed by cooling at RT for 20 min.]

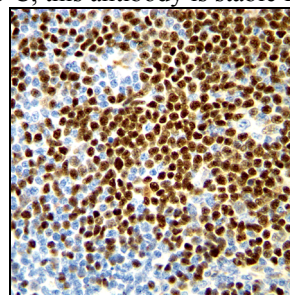
The optimal dilution for a specific application should be determined by the investigator.

**Positive Control:** Breast carcinomas or mantle cell lymphoma

**Cellular Localization:** Nuclear

**Supplied As:** Tissue culture supernatant with 15mM sodium azide. Or Prediluted antibody which is ready-to-use for immunohistochemical staining.

**Storage and Stability:** Store vial at 4°C. When stored at 2-8°C, this antibody is stable for 24 months.



Human mantle cell lymphoma stained with anti-Cyclin D1, Cat# RM-9104. Photo courtesy of Richard Cartun, Ph.D.

### References:

Cheuk W, et. al., *Consistent Immunostaining for Cyclin D1 can be achieved on a routine basis using a newly available rabbit monoclonal antibody.* Am J Surg Pathol June 2004 Vol 28 (6) 801-7

### Limitations and Warranty:

Our products are intended FOR RESEARCH USE ONLY and are not approved for clinical diagnosis, drug use or therapeutic procedures. No products are to be construed as a recommendation for use in violation of any patents. We make no representations, warranties or assurances as to the accuracy or completeness of information provided on our data sheets and website. Our warranty is limited to the actual price paid for the product. NeoMarkers is not liable for any property damage, personal injury, time or effort or economic loss caused by our products.

### Material Safety Data:

This product is not licensed or approved for administration to humans or to animals other than the experimental animals. Standard Laboratory Practices should be followed when handling this material. The chemical, physical, and toxicological properties of this material have not been thoroughly investigated. Appropriate measures should be taken to avoid skin and eye contact, inhalation, and ingestion. The material contains 0.09% sodium azide as a preservative. Although the quantity of azide is very small, appropriate care should be taken when handling this material as indicated above. The National Institute of Occupational Safety and Health has issued a bulletin citing the potential explosion hazard due to the reaction of sodium azide with copper, lead, brass, or solder in the plumbing systems. Sodium azide forms hydrazoic acid in acidic conditions and should be discarded in a large volume of running water to avoid deposits forming in metal drainage pipes.



---

## **Cyclin D1 (Clone SP4)**

Rabbit Monoclonal Antibody

Cat. #RM-9104-S0, -S1, or -S (0.1ml, 0.5ml, or 1.0ml Supernatant)

Cat. #RM-9104-R7 (7.0ml) (Ready-to-Use for Immunohistochemical Staining)

Cat. #RM-9104-PCL (0.1ml) (Positive Control for Western Blot)

Please note this data sheet has been changed effective March 29, 2010

*For Research Use Only*

