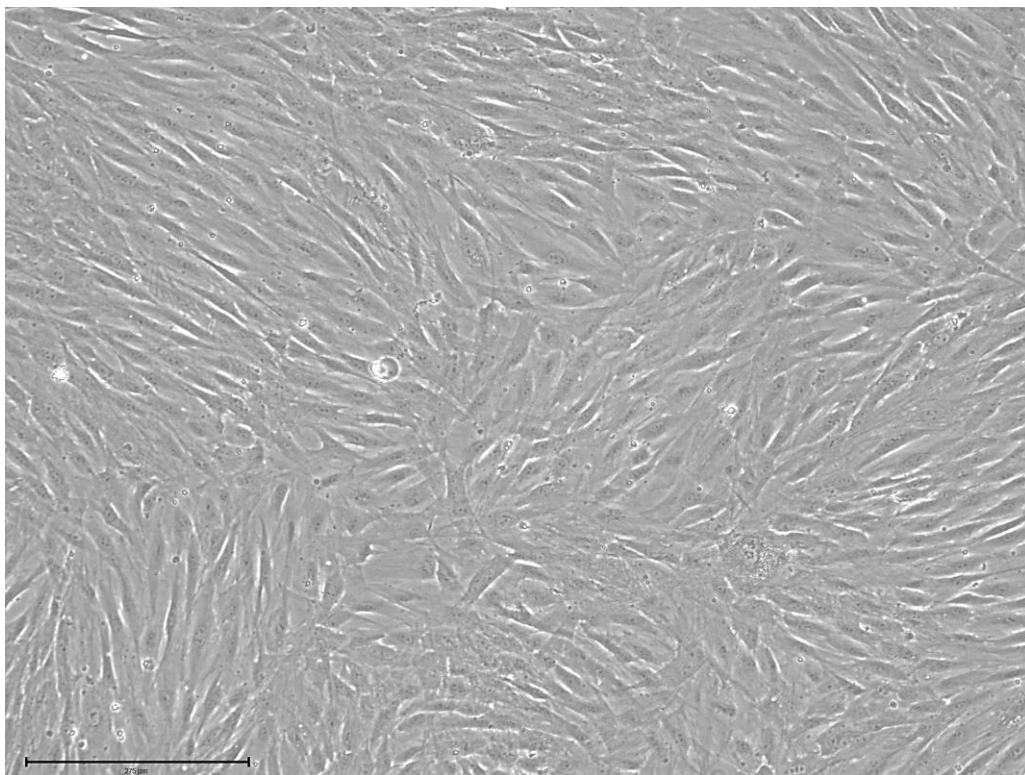
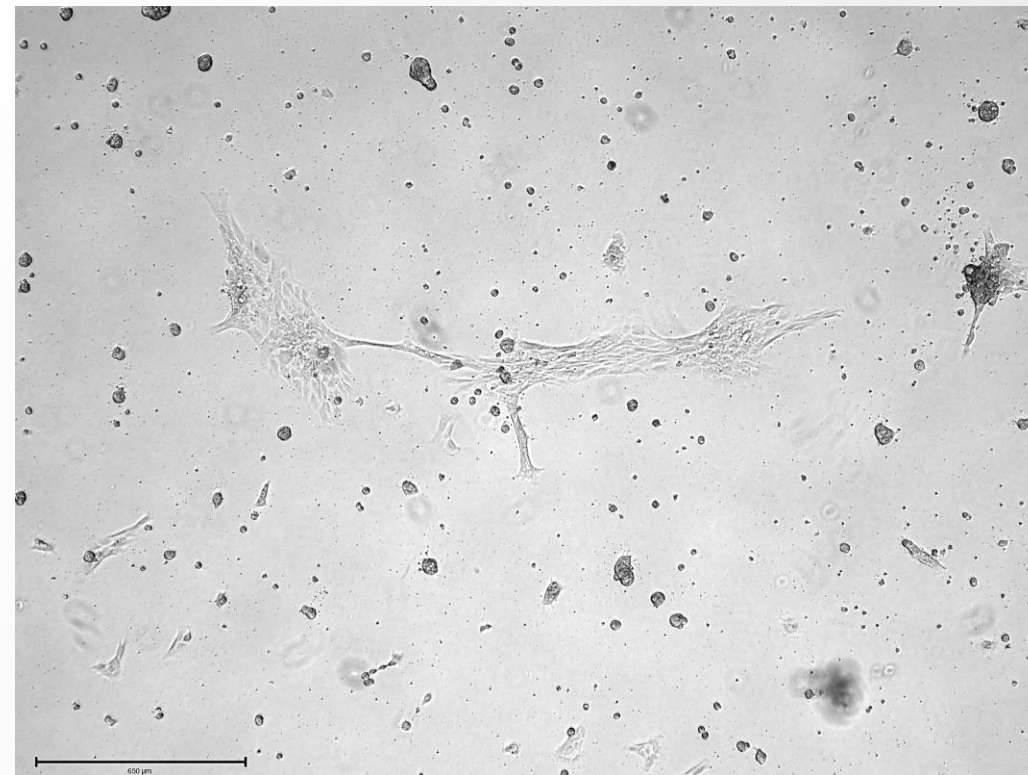


A



B



Compatibility of Nunc™ UpCell™ surface with extracellular matrices (ECM). The type and concentration of ECM coating should be optimized for each cell type. For example, human adipose-derived mesenchymal stromal cells (MSC) grew confluent on Vitronectin-coated UpCell surface (A) but failed to expand on CELLStart™-coated UpCell surface (B). MSC were seeded at 8000 cells/cm² on UpCell dishes (catalog number 174901) pre-coated with either 20 μg/mL Vitronectin (catalog number A14700) or CELLStart™ substrate (catalog number A1014201) diluted 1:50. In general, when coating UpCell surfaces we recommend increasing the concentration of coating substrate to at least double the concentration used on standard cell culture-treated polystyrene. Images were captured 4 days after seeding using an EVOS M7000 microscope. Scale bar represents 275 μm.