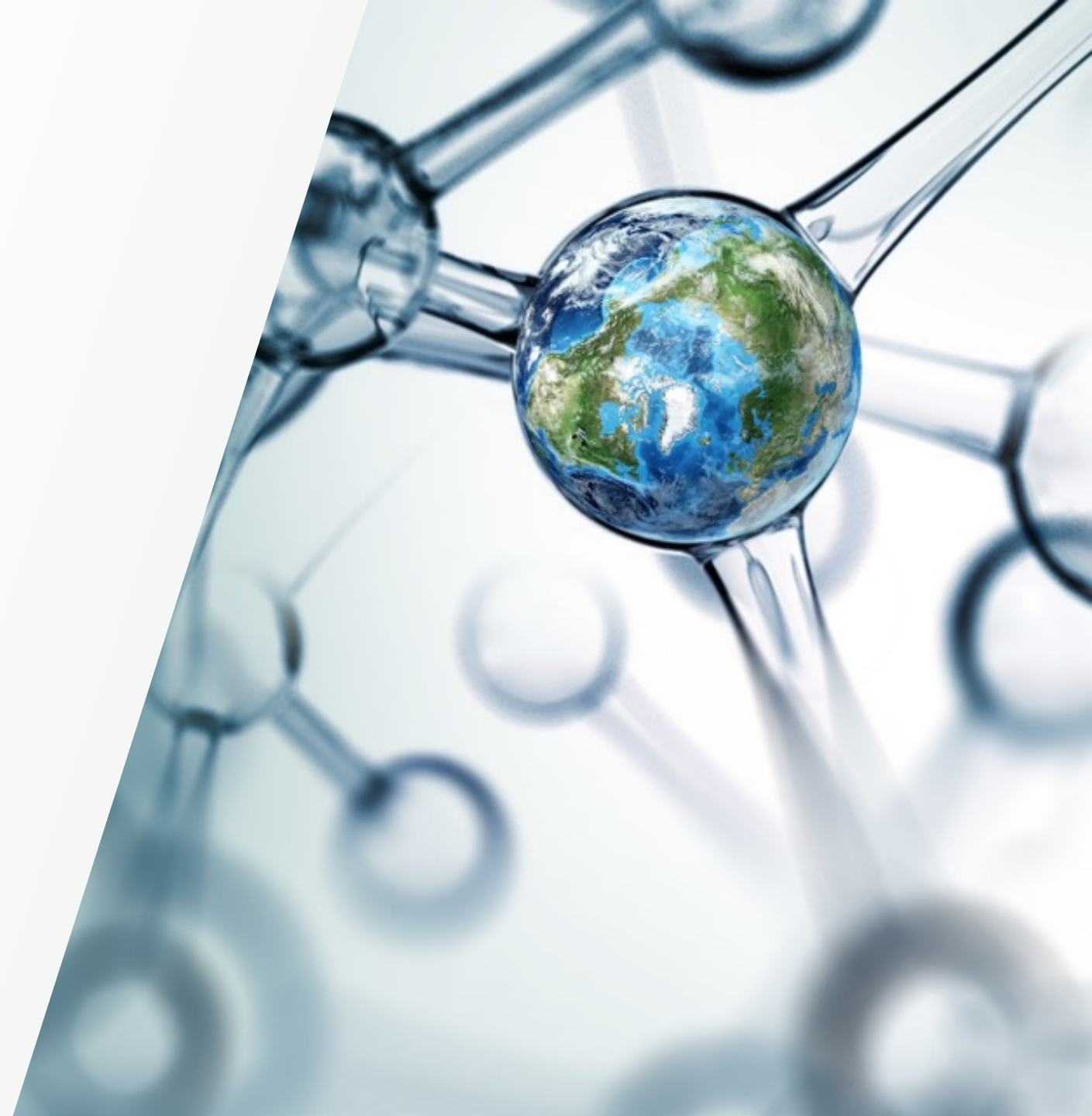
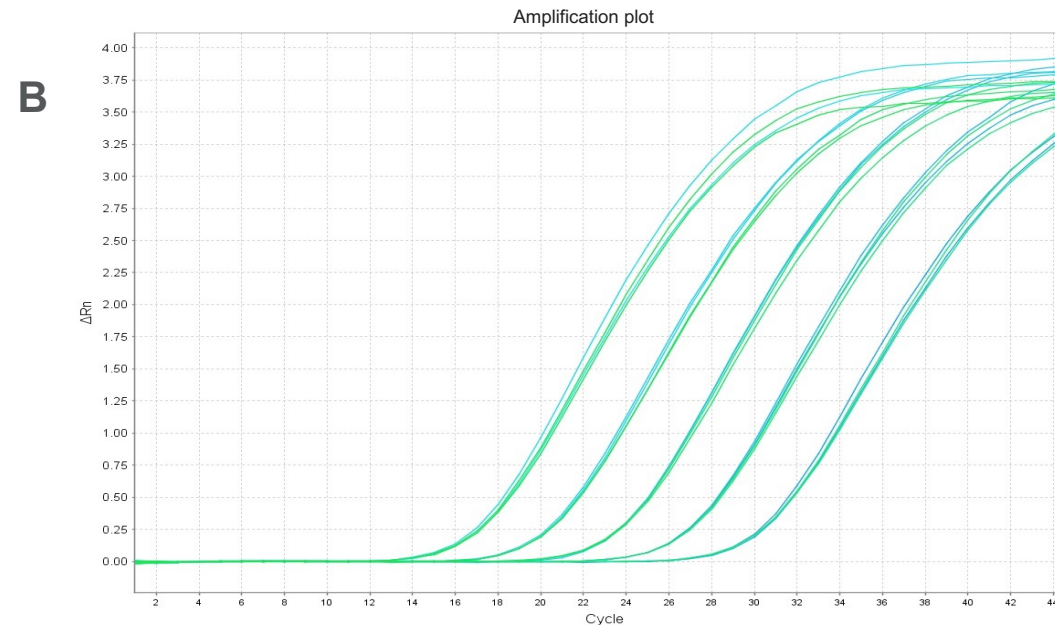
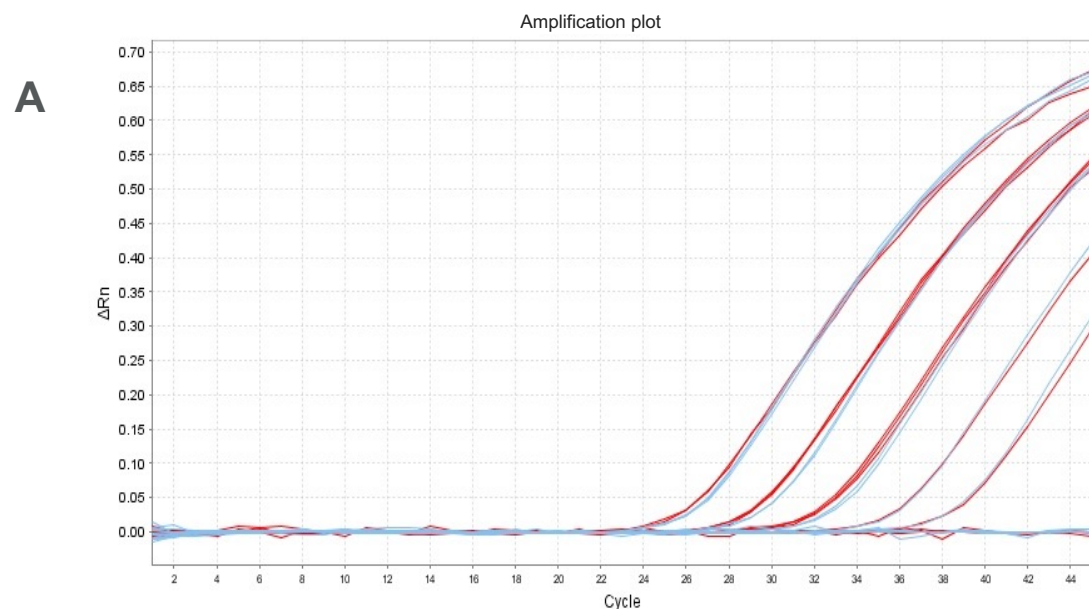


Performance comparison of the updated and original formulation of Platinum II Taq Hot-Start DNA Polymerase

 The world leader in serving science



Platinum II Taq Hot-Start DNA Polymerase performance comparison in qPCR application



Dynamic range of Invitrogen™ Platinum™ II Taq Hot-Start DNA Polymerase. (A) Human genomic DNA (20 ng–2 pg), and (B) *E. coli* DNA (1.5 ng–150 fg) were amplified using Platinum II Taq Hot-Start DNA Polymerase and Applied Biosystems™ TaqMan™ probe system. Red (A) and blue (B) lines represent original formulation, blue (A) and green (B) represent updated formulation with an alternative detergent.

A) E = 98%, $R^2 = 0.994$ (updated formulation); E = 107%, $R^2 = 0.990$ (original formulation)

B) E = 101%, $R^2 = 0.999$ (updated formulation); E = 103%, $R^2 = 1$ (original formulation)

The updated formulation of Platinum II Taq Hot-Start DNA Polymerase retains dynamic range equivalent to that of the original formulation of Platinum II Taq Hot-Start DNA Polymerase.

Thank you

For Research Use Only. Not for use in diagnostic procedures. © 2022 Thermo Fisher Scientific Inc. All rights reserved.
All trademarks are the property of Thermo Fisher Scientific and its subsidiaries unless otherwise specified. TaqMan is a
trademark of Roche Molecular Systems, Inc., used under permission and license. **PPT1669 0522**

