



WESTERN BLOTTING

A bright new path to western blotting starts here

Laboratory supply checklist

For more information or to obtain a quote, please contact your sales representative:

Get on your way to producing exceptional western blots and clear images

Move forward with confidence using a wide selection of high-performance Thermo Scientific™ and Invitrogen™ western blotting reagents and devices

Whether you are starting a new research journey or persevering through a multiyear project, great western blots are built upon a foundation of high-yield protein preparation and clear protein gel electrophoresis.

Leverage our handpicked highlights to support your western blot experiments from start to finish.

Protein extraction reagents

Obtain high protein yields and preserve protein activity.



Ordering information

Product	Quantity	Cat. No.
RIPA Lysis and Extraction Buffer	250 mL	89901
Mem-PER Plus Membrane Protein Extraction Kit	300 mL	89842
Pierce Universal Nuclease for Cell Lysis	5 kU	88700
Lysozyme	5 g	89833
Subcellular Protein Fractionation Kit for Cultured Cells	35 mL	78840
Pierce Protease Inhibitor Mini Tablets, EDTA-free	30 tablets	A32955
Pierce Protease Inhibitor Mini Tablets	30 tablets	A32953
Halt Protease and Phosphatase Inhibitor Cocktail (100X)	1 mL	78440

See more at thermofisher.com/proteinextraction

Protein cleanup

We offer a variety of resins and specialty devices that efficiently remove salts and small-molecule contaminants, such as detergents, from samples. They are offered in multiple flexible formats and are designed to provide efficient and consistent performance for high sample recoveries.



Ordering information

Product	Cat. No.
Desalting spin columns	Multiple offerings
Dialysis devices	Multiple offerings
Concentrators	Multiple offerings

Choose the right protein cleanup product for your experiments at thermofisher.com/proteincleanup

Protein assays

Measure total protein concentration with high accuracy using these multiwell protein assays.



Ordering information

Product	Quantity	Cat. No.
Pierce Dilution-Free Rapid Gold BCA Protein Assay Kit	500 mL	A55860
Pierce Bradford Plus Protein Assay Kit with Dilution-Free BSA Protein Standards	950 mL	A55866
Pierce BCA Protein Assay Kit with Dilution-Free BSA Protein Standards	1 L	A55864
Pierce Dilution-Free BSA Protein Standards, multichannel pipette compatible	7 x 1 mL	A55863

Explore all available offerings at thermofisher.com/proteinassays

Protein gel welcome packs

Our gel electrophoresis welcome packs are a budget-friendly solution containing a gel tank and the precast gels, reagents, and buffers needed to jump-start your experiment. Each pack includes:

- Sample buffer
- Running buffer
- 2 boxes of gels (mini or midi)
- Mini or midi gel tank
- Protein ladder



Ordering information

Product	Quantity	Cat. No.
Bolt Bis-Tris Plus Mini Gel Welcome Pack, 4–12%, 12-well	1 kit	NW0412C
NuPAGE Bis-Tris Welcome Pack, 4–12%, 12-well	1 kit	NP032B
Novex WedgeWell Tris-Glycine Welcome Pack, 4–20%, 12-well	1 kit	XP0420B
NuPAGE Tris-Acetate Welcome Pack, 3–8%, 12-well	1 kit	EA0375B
Novex Tricine Welcome Pack, 10–20%, 12-well	1 kit	EC6625B

See all available options and wide-format midi gel welcome packs at thermofisher.com/proteingelwelcome

Run our protein gels in Bio-Rad gel tanks

Upgrade to high-performance Invitrogen™ protein gels without acquiring a new tank. The Invitrogen™ electrophoresis cores are compatible with Bio-Rad™ Mini-PROTEAN™ gel tanks.



Ordering information

Product	Quantity	Cat. No.
Tetra Electrophoresis Primary Core	1 kit	1658037
Tetra Electrophoresis Companion Core	1 kit	1658038
Tetra Electrophoresis Core Set	1 kit	1658040

Learn more at thermofisher.com/tetracores

Gel electrophoresis—mix and match

Pick and choose from an extensive selection of precast gels and DIY solutions to cast your own gels. Add your favorite protein ladder, gel tank, and touchscreen electrophoresis power supply.

Ordering information

Product	Quantity	Cat. No.
Bolt Bis-Tris Plus WedgeWell precast protein gels, mini	1 box of 10 gels	See well configurations
NuPAGE Bis-Tris or Tris-Acetate precast protein gels, mini or midi, WedgeWell format options available	1 box of 10 gels	See well configurations
Novex Tris-Glycine or Tricine precast protein gels, mini or midi, WedgeWell format	1 box of 10 gels	See well configurations
SureCast Gel Handcast Bundle A - Hardware and Reagents	1 kit	HC1000SR
Mini Gel Tank	1 unit	A25977
SureLock Tandem Midi Gel Tank	1 unit	STM1001
Fluorescent Compatible Sample Buffer (4X, non-reducing)	5 mL	LC2570
PowerEase Touch 120W Power Supply	1 device	PS0120
PowerEase Touch 350W Power Supply	1 device	PS0350
PowerEase Touch Welcome Packs	1 pack	See available models



Learn more

Precast gel options: thermofisher.com/proteingels

Electrophoresis chambers: thermofisher.com/electrophoresischambers

Protein standards and ladders

Equip your lab with our reliable protein ladders to achieve precise protein size determination and clear visualization for your gel electrophoresis needs.

Learn more at thermofisher.com/proteinladders

Power supplies: thermofisher.com/powerease



Ordering information

Product	Quantity	Cat. No.
PageRuler Plus Prestained Protein Ladder, 10 to 250 kDa	2 x 250 µL	26619
iBright Prestained Protein Ladder	2 x 250 µL	LC5615
HiMark Prestained Protein Standard	250 µL	LC5699
PageRuler Unstained Broad Range Protein Ladder	2 x 250 µL	26630

Wet tank transfer modules, reagents, and membranes

Our nitrocellulose and PVDF membranes, blotting paper, and blocking buffers transfer your proteins and keep you moving to great western blot results.

Ordering information

Product	Quantity	Cat. No.
Mini Blot Module (for Mini Gel Tank)	1 unit	B1000
SureLock Tandem Midi Blot Module	1 unit	STM2001
Invitrolon PVDF/Filter Paper Sandwich, 0.45 µm pore size	20/pack	LC2005
PVDF/Filter Paper Sandwich, 0.2 µm pore size	20/pack	LC2002
Low Fluorescence PVDF Transfer Membrane	Roll/precut	See options
PVDF Transfer Membrane, 0.2 µm, 3.75 m x 26.5 cm	1 roll	88520
Nitrocellulose/Filter Paper Sandwich, 0.2 µm pore size	20/pack	LC2000
Nitrocellulose/Filter Paper Sandwich, 0.45 µm pore size	20/pack	LC2001
Nitrocellulose Membrane, 0.45 µm, 30 cm x 3.5 m	1 roll	88018
Western Blotting Filter Paper, 8 cm x 10.5 cm	100 sheets	88600
Bolt Transfer Buffer (20X)	1 L	BT00061
Novex Tris-Glycine Transfer Buffer (25X)	500 mL	LC3675
NuPAGE Transfer Buffer (20X)	1 L	NP00061



Find more options at thermofisher.com/membranes and thermofisher.com/electrophoresisbuffers

Rapid transfer devices and consumables

Got a need for speed? Leverage the convenience and time savings of rapid semi-dry and dry blotting devices.



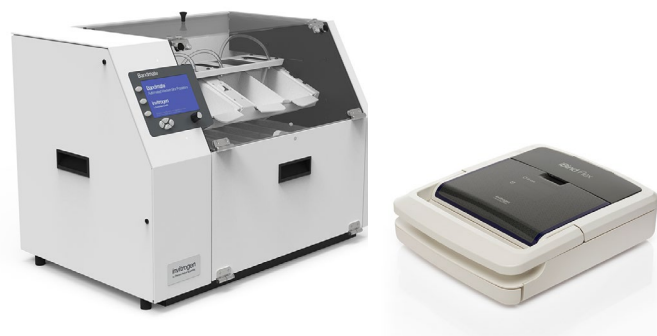
Ordering information

Product	Quantity	Cat. No.
iBlot 3 Starter Kit, nitrocellulose	1 kit	IB31001S
iBlot 3 Starter Kit, PVDF	1 kit	IB31002S
iBlot 3 Starter Kit, low-fluorescence PVDF	1 kit	IB31003S
iBlot 3 Transfer Stacks, nitrocellulose, PVDF, or low-fluorescence PVDF	10 stacks/pack	See options
Bolt Welcome Pack with iBlot 3 System (includes buffer, ladder, and transfer stack consumables to get started)	1 bundle	NW0412AIB3
Power Blotter Welcome Pack	1 device/kit	PB0112
Power Blotter XL Welcome Pack	1 device/kit	PB0113
Power Blotter Select Transfer Stacks, PVDF or nitrocellulose, mini or regular stack sizes	10 stacks/pack	See options
	40 stacks/pack	

Learn more at thermofisher.com/transfer

Automated western blot processing

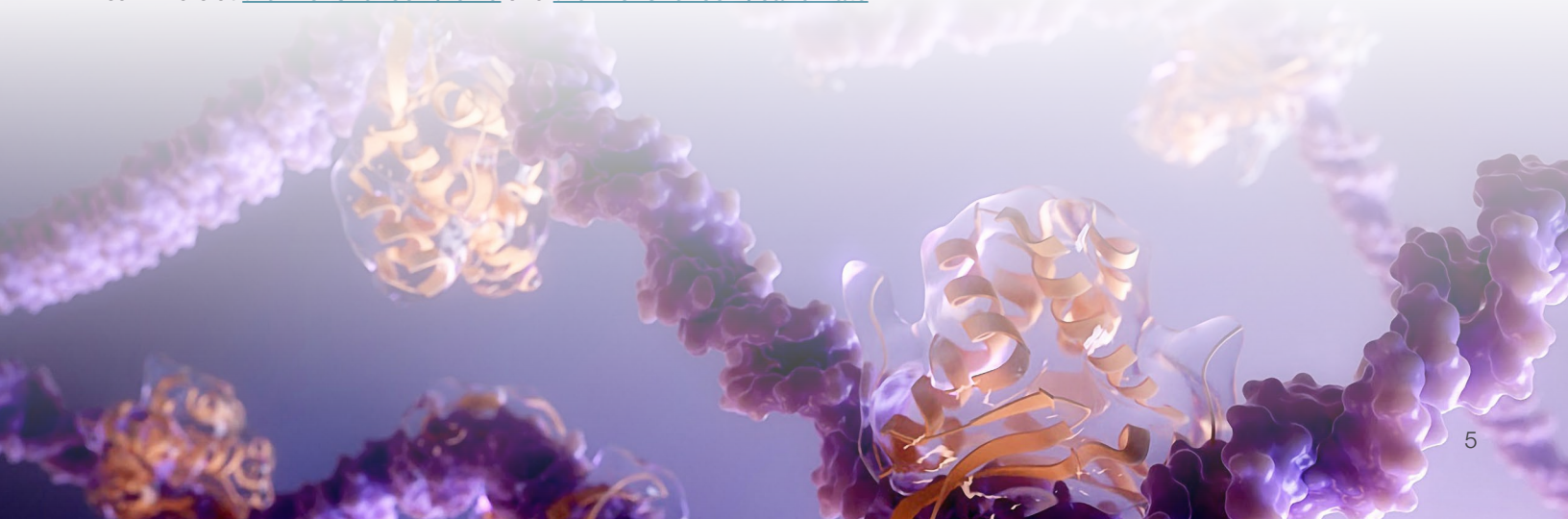
Automated western blot processors such as the Invitrogen™ iBind™ and Bandmate™ systems can streamline the immunodetection process, while still providing consistent and reproducible results.



Ordering information

Product	Quantity	Cat. No.
iBind Flex Western Starter Kit	1 device/kit	SLF2000S
iBind Western Starter Kit	1 kit	SLF1000S
iBind Flex Cards	10 cards	SLF2010
iBind Flex Solution Kit	1 kit	SLF2020
iBind Cards	10 cards	SLF1010
iBind Solution Kit	1 kit	SLF1020
Bandmate Automated Western Blot Processor	1 device	BW1000

Learn more at thermofisher.com/ibind and thermofisher.com/bandmate



Protein stains and total protein normalization reagent

Confirm the quality of the separation and the transfer efficiency before immunodetection. Choose Invitrogen™ No-Stain™ Protein Labeling Reagent to combine rapid, flexible visualization of gels or blots with accurate total protein normalization.



Ordering information

Product	Quantity	Cat. No.
No-Stain Protein Labeling Reagent (trial size)	10 reactions	A44717
No-Stain Protein Labeling Reagent	40 reactions	A44449
SimplyBlue SafeStain	1 L	LC6060
Ponceau S Staining Solution	500 mL	A40000279
	1,000 mL	A40000278
SYPRO Ruby Protein Blot Stain	200 mL	S11791

Learn more at thermofisher.com/nostain and thermofisher.com/proteinstains

Secondary antibodies

Our sensitive HRP and fluorescent secondary antibodies, including Invitrogen™ Alexa Fluor™ Plus antibodies, are designed to provide bright signal and enhanced sensitivity.



Ordering information

Product	Quantity	Cat. No.
Goat Anti-Mouse IgG (H+L) Cross-Adsorbed Secondary Antibody, HRP-conjugated	1 mg	A16072
Goat Anti-Rabbit IgG (H+L) Cross-Adsorbed Secondary Antibody, HRP-conjugated	1 mg	A16104
Goat Anti-Rat IgG (H+L) Cross-Adsorbed Secondary Antibody, HRP-conjugated	0.5 mg	A10549
Donkey Anti-Goat IgG (H+L) Cross-Adsorbed Secondary Antibody, HRP-conjugated	1 mg	A16005
Goat Anti-Mouse IgG (H+L) Cross-Adsorbed Secondary Antibody, HRP-conjugated	1 mg	A16072
Alexa Fluor Plus Secondary Antibodies	Various	Various options available

See all secondary antibodies at thermofisher.com/antibodies

Blocking buffers

Our selection of blocking buffers enable exceptional signal and low background. Not sure where to start? Thermo Scientific™ StartingBlock™ Blocking Buffer is compatible with a wide range of protein targets and antibody combinations.



Ordering information

Product	Quantity	Cat. No.
StartingBlock (TBS) Blocking Buffer	1 L	37542
StartingBlock (PBS) Blocking Buffer	1 L	37538
Blocker FL Fluorescent Blocking Buffer (10X)	100 mL	37565
Blocker BSA	200 mL	37525
Blocker Casein	1 L	37528

Learn more at thermofisher.com/blockingbuffers

Washing buffers

Our dry-blend buffering packs and high-purity detergents can help enhance your signal-to-noise ratio.



Ordering information

Product	Quantity	Cat. No.
BupH Phosphate Buffered Saline Packs (0.1 M sodium phosphate, 0.15 M NaCl, pH 7.2)	40 packs	28372
BupH Tris Buffered Saline Packs (25 mM Tris, 0.15 M NaCl, pH 7.2)	40 packs	28376
Pierce PBS Tween 20 Buffer (20X)	500 mL	28352
Pierce TBS Tween 20 Buffer (20X)	500 mL	28360
Tween 20 Surfact-Amps Detergent Solution (10% w/v)	6 x 10 mL	28320

Learn more at thermofisher.com/westernbuffers

Stripping buffers

Thermo Scientific™ Restore™ products enable you to quickly strip and reprobe, and thus reuse the blot again and again, helping you save time, money, and aggravation. Working with high-affinity antibodies? Choose the Thermo Scientific™ Restore™ PLUS formula.



Ordering information

Product	Quantity	Cat. No.
Restore Western Blot Stripping Buffer	500 mL	21059
Restore PLUS Western Blot Stripping Buffer	500 mL	46430
Restore Fluorescent Western Blot Stripping Buffer	100 mL	62300

Learn more at thermofisher.com/westernbuffers

Western blotting substrates

Thermo Scientific™ SuperSignal™ chemiluminescent HRP substrates offer excellent performance in western blotting with longer light emission and strong signal intensity.



Ordering information

Product	Quantity	Cat. No.
SuperSignal West Pico PLUS Chemiluminescent Substrate	200 mL	34577
	500 mL	34580
	1 L	34578
SuperSignal West Dura Extended Duration Substrate	100 mL	34075
	200 mL	34076
SuperSignal West Femto Maximum Sensitivity Substrate	100 mL	34095
	200 mL	34096
SuperSignal West Atto Ultimate Sensitivity Substrate	100 mL	A38555
	200 mL	A38556

Learn more at thermofisher.com/chemisubstrates

Image capture and analysis

With Invitrogen™ iBright™ Imaging Systems, you can simplify image capture and analysis with a powerful suite of automated technologies and functions. Whether you're imaging chemiluminescent western blots, stained protein and nucleic acid gels, or fluorescent blots, there's an iBright imaging solution for you.



Ordering information

Product	Quantity	Cat. No.
iBright FL1500 Imaging System	1 system	A44241
iBright CL1500 Imaging System	1 system	A44240
iBright CL750 Imaging System	1 system	A44116

Learn more at thermofisher.com/ibright

iWestern workflow

The Invitrogen™ iWestern™ workflow features innovative, modern solutions designed to address processing efficiency, reproducibility, and robustness of results—because your time is precious. The standard iWestern bundle contains core innovative iWestern workflow devices, including the necessary consumables and reagents (not pictured), to get started:

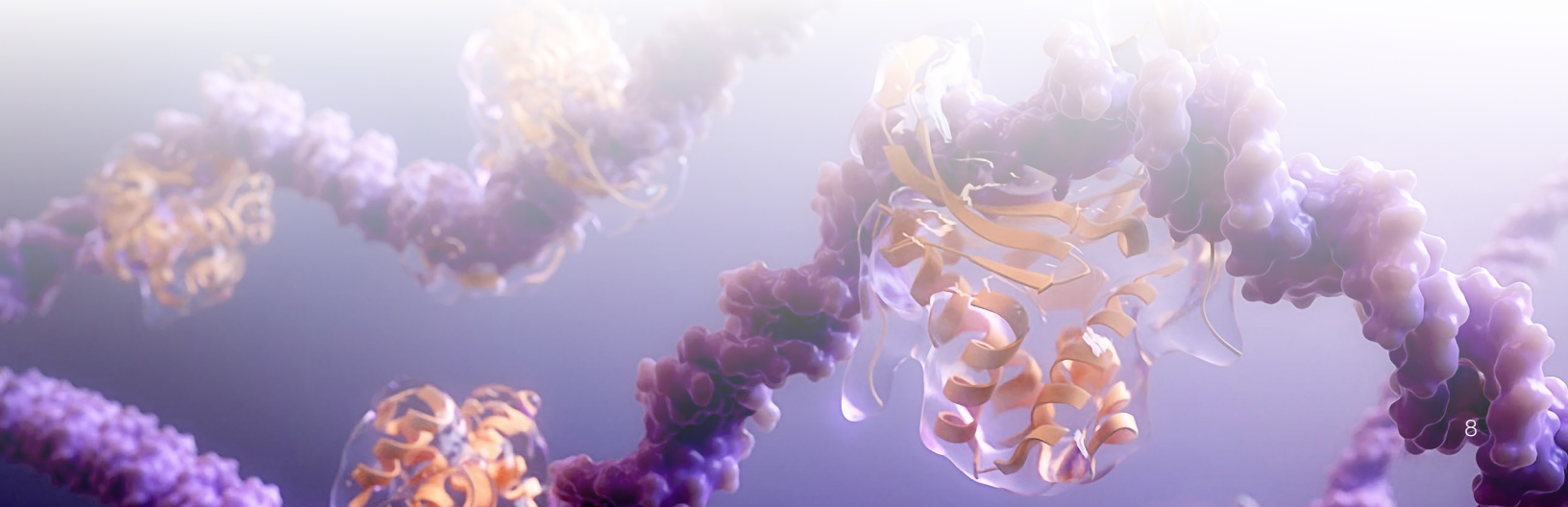
- Invitrogen™ PowerEase™ Touch 600W Power Supply
- Invitrogen™ Bolt™ Gel Welcome Pack (includes an Invitrogen™ Mini Gel Tank)
- Invitrogen™ iBlot™ 3 Starter Kit
- Invitrogen™ iBind™ Flex Western Starter Kit
- Invitrogen™ iBright™ FL1500 Imaging System



Ordering information


Product	Quantity	Cat. No.
iWestern Workflow Bundle	Standard bundle	Request quote
	Custom bundle	Request quote

Explore more, customize a bundle, and get a quote at thermofisher.com/iwestern



Notes

Use this space to let us know what other products you'd like to include in the quote or if you need help choosing the best solution for your experimental needs.

 See a complete selection of all of our western blotting products at thermofisher.com/western-blot