

Cellular analysis

Cellular imaging

Your guide to culturing, imaging, and everything in between

Grow cells

Gibco™ cell culture media and reagents

- Designed to support the growth and maintenance of a variety of mammalian cells and cell lines
- Ready-to-use media products and powdered and concentrated liquid formulations

Learn more at thermofisher.com/media

Gibco™ FBS

- Helps provide cell health, maintenance, and viability crucial for optimal performance and cell growth in your cell culture medium

Learn more at thermofisher.com/fbs

Gibco™ PeproTech™ cytokines and growth factors

- Portfolio of more than 700 bioactive recombinant proteins
- Exceptional performance with high bioactivity, carrier-free formats, and lot-to-lot and grade-to-grade consistency
- Three manufacturing grades (research use (RUO), animal free (AF), and GMP) and multiple vial sizes available

Learn more at thermofisher.com/recombinantproteins



Media, plastics, and sera.



PeproTech cytokines and growth factors.

Fix, permeabilize, and block

Invitrogen™ Image-iT™ Fixation/Permeabilization Kit

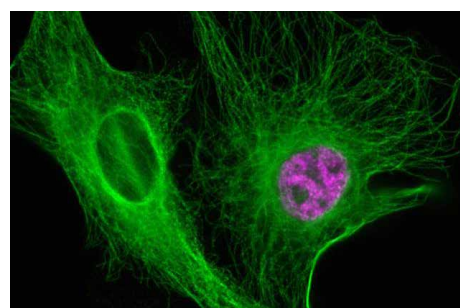
- Enables cell sample labeling via fixing and permeabilizing structures
- Allows precise targeting by antibodies and fluorescent stains

Learn more at thermofisher.com/image-it

Invitrogen™ BlockAid™ Blocking Solution

- Helps enhance signal-to-noise ratio by preventing nonspecific binding of fluorescent labels
- Offers superior background reduction compared to traditional blocking solutions

Learn more at thermofisher.com/blockaid



BP4E cells were fixed and permeabilized using the Image-iT Fixation/Permeabilization Kit (Cat. No. R37602) and stained with Invitrogen™ Alexa Fluor™ 647 dye (Cat. No. C10340).

Label and stain

Invitrogen™ primary antibodies

- Antibodies for cancer, signaling, neurobiology, stem cell, and immunology targets
- Engineered recombinant antibodies for superior target specificity
- Antibodies for epitope tags, fusion proteins, dyes, and haptens
- Advance-verified antibodies specifically validated* in immunohistochemistry (IHC) and immunocytochemistry (ICC)

Learn more at thermofisher.com/antibodies

Invitrogen™ cell structure stains

- Confirm the subcellular localization of a protein
- Identify the mitochondria, nuclei, ER, golgi, cytoplasm, and plasma membrane

Learn more at thermofisher.com/cellstructure

Invitrogen™ Image-iT™ cell painting kits

- Designed for cellular-component painting to assess cell health and cytotoxicity
- Optimized format for high-content screening (HCS) instruments, such as Thermo Scientific™ CellInsight™ platforms, to provide a phenotypical readout of cell status

Learn more at thermofisher.com/cellpaintingassay

Invitrogen™ antibody labeling kits

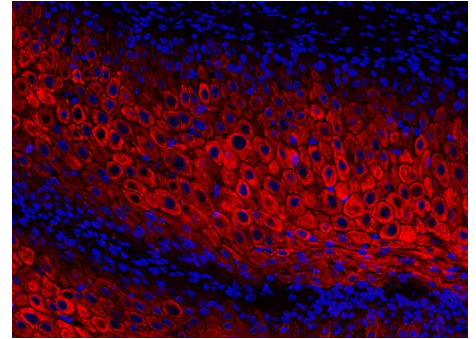
- Optimized protocols for convenient and reliable antibody conjugation
- Fast and easy conjugation with Invitrogen™ Zenon™ antibody labeling kits or Invitrogen™ Zip Alexa Fluor™ Rapid Antibody Labeling Kits
- Site-specific labeling with Invitrogen™ SiteClick™ Antibody Labeling Kits
- Conveniently label in the presence of stabilizers with Invitrogen™ ReadyLabel™ Antibody Labeling Kits

Learn more at thermofisher.com/labelingkits

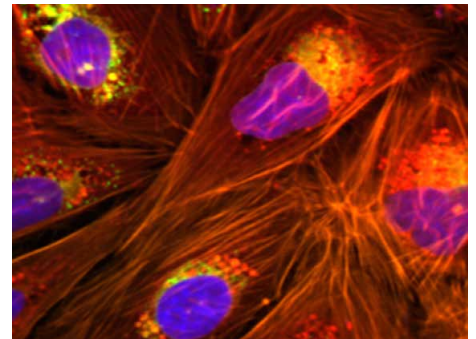
Invitrogen™ custom conjugation services

- Expert antibody or protein conjugation with your choice of label and labeling chemistry
- New conjugate options include bispecific antibodies, oligonucleotides, and antibody drug conjugates
- Offers a range of labels, including fluorescent dyes, phycobiliproteins, and enzymes
- Available for both research and commercial purposes

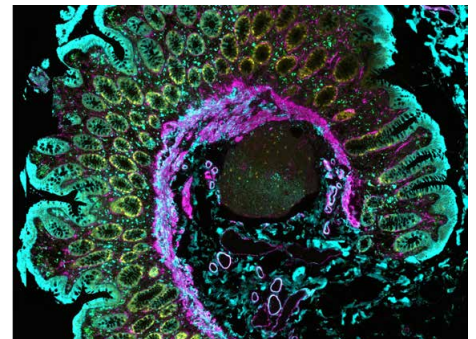
Learn more at thermofisher.com/customconjugation



Squamous cell carcinoma tissue section stained with Invitrogen™ Pan Cytokeratin Monoclonal Antibody (AE1/AE3) and Invitrogen™ eBioscience™ Phalloidin eFluor™ 660 (Cat. No. 50-9003-82). Nuclei were stained with Invitrogen™ DAPI (Cat. No. D1306).



Fluorescent overlays of morphological cellular profiling with Image-iT cell painting kit on U-2OS cells, imaged on the Thermo Scientific™ CellInsight™ CX7 LXR Pro High-Content Analysis Platform.



Formalin-fixed paraffin-embedded (FFPE) human colon tissue stained with Invitrogen™ ReadyLabel™ AlexaFluor™ Antibody Labeling Kits and imaged on the Invitrogen™ EVOS™ M7000 Imaging System.

* The use or any variation of the word "validation" refers only to research-use antibodies that were subject to functional testing to confirm that the antibody can be used with the research techniques indicated. It does not ensure that the product(s) was validated for clinical or diagnostic uses.

Detect

Invitrogen™ Alexa Fluor™ secondary antibodies

- A portfolio of 18 dyes with a variety of host and target species
- Excellent multiplexing abilities with the widest dye selection among Alexa Fluor antibody vendors
- Optimized to provide outstanding and consistent results over time

Learn more at thermofisher.com/alexafluor

Invitrogen™ Alexa Fluor™ Plus secondary antibodies

- A portfolio of seven dyes with a variety of host and target species
- Higher signal-to-noise ratio—up to 4.2 times higher—than traditional Alexa Fluor dyes
- Increased sensitivity with more efficient binding for low-abundance targets

Learn more at thermofisher.com/alexafluorplus

Invitrogen™ HRP secondary antibodies

- A portfolio of 295 HRP secondary antibodies
- 17 target species and 7 host species available
- Supports 10 applications

Learn more at thermofisher.com/hrp

Invitrogen™ Tyramide SuperBoost™ kits

- Detect low abundance protein
- 10–200 times the sensitivity of standard ICC, IHC, and *in situ* hybridization (ISH) methods
- Exceptional signal amplification, definition, and clarity

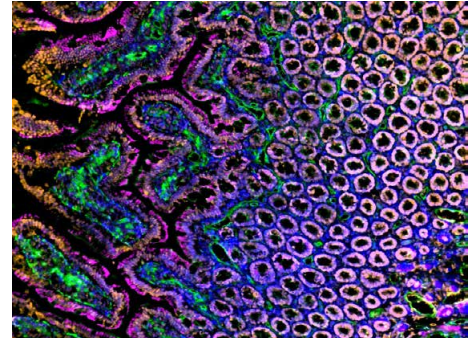
Learn more at thermofisher.com/superboost

Protect and enhance

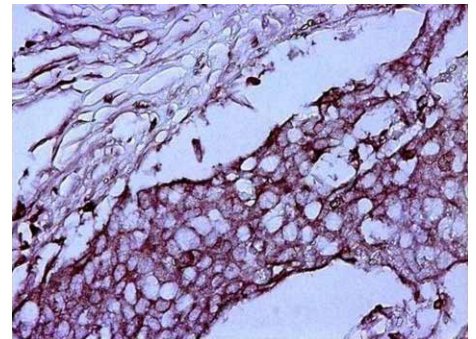
Invitrogen™ ProLong™ Glass Antifade Mountant

- Helps inhibit photobleaching across the spectrum, even after prolonged storage
- Low background across the spectrum
- Hard-setting mountant
- Available with or without DAPI

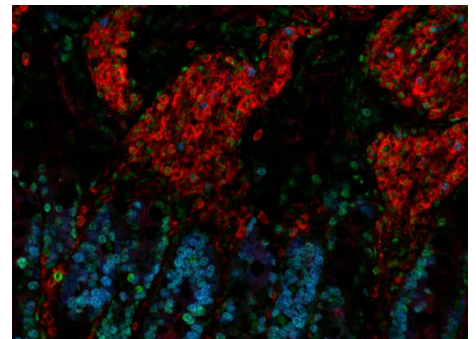
Learn more at thermofisher.com/antifade



Invitrogen™ Alexa Fluor™ Plus 555 secondary antibody in rat intestine.



Invitrogen™ goat anti-mouse HRP secondary antibody in paraffin-embedded human colon.



Rat intestinal sections (FFPE) were sequentially immunolabeled with three primary antibodies against H2B, actin, and Ki-67. The samples were then labeled with specific Tyramide SuperBoost kits to detect each antibody.

Image

Invitrogen™ EVOS™ Imaging Systems

- High-resolution cameras, controlled LED lights, and intuitive stage-tracking software effortlessly create stunning images
- Live-cell imaging and advanced analysis options for publication-quality results

Learn more at thermofisher.com/evos

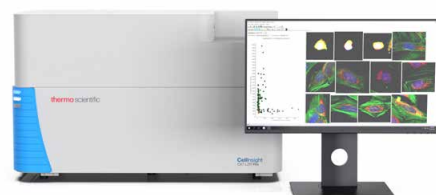


EVOS M7000 Imaging System.

Thermo Scientific™ CellInsight™ high-content screening/analysis (HCS/HCA) platforms

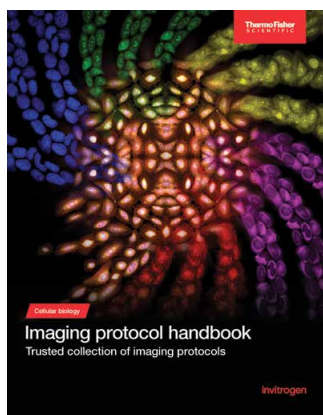
- Unbiased single-cell analysis from monolayers to spheroids with laser/LED options and up to seven illumination channels
- Support various bioapplications like cell painting, utilizing Thermo Scientific™ Amira™ Software for 3D analysis
- Equipped with accessories for high-throughput automation, enabling fast time-to-data acquisition

Learn more at thermofisher.com/hcs

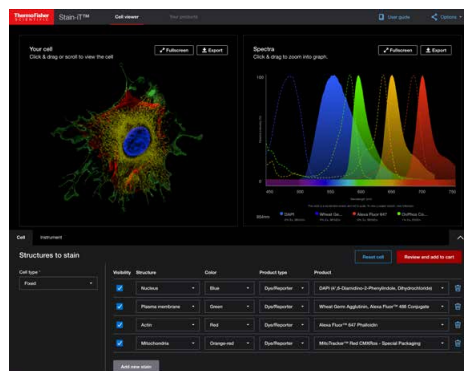


Thermo Scientific™ CellInsight™ CX7 LZR Pro High-Content Analysis Platform.

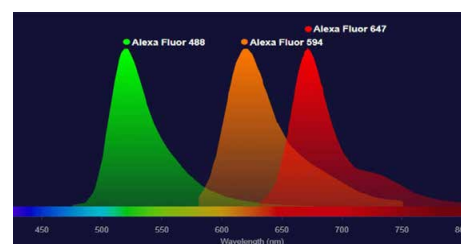
Cell imaging resources



Imaging protocol handbook.



Invitrogen™ Stain-iT™ Cell Staining Simulator.



Fluorescence SpectraViewer tool.



Learn more at thermofisher.com/cellularimaging

Intended use of the products mentioned here may vary. For specific intended use statements, please refer to the product label. © 2024 Thermo Fisher Scientific Inc. All rights reserved. All trademarks are the property of Thermo Fisher Scientific and its subsidiaries unless otherwise specified. COL122063 0124