

WESTERN DETECTION



High-throughput
western blotting

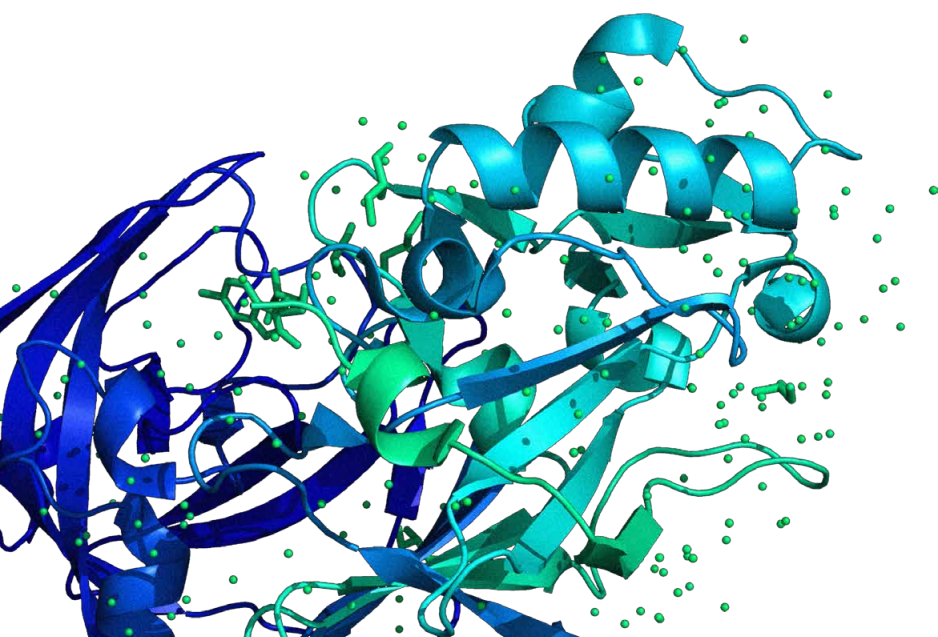
Get more high-quality data in less time, with less work



ThermoFisher
SCIENTIFIC

High-throughput western blotting products to help you get more done with less effort

Processing many samples or blots can often become laborious and time-consuming. We offer tools that are designed to boost your high-throughput western blotting. From electrophoresis to imaging and accurate quantitation, you can choose products to help you achieve your best western blotting results in approximately 4 hours, with less hands-on work.





Separate



Transfer



Probe and Detect



Load up to 26 samples in Invitrogen precast midi protein gels

Invitrogen™ precast midi gels have a wider format compared to mini gels and are made with high-purity, strictly quality-controlled reagents to provide top-quality, consistent protein separation. The neutral pH chemistry of Invitrogen™ NuPAGE™ Bis-Tris midi gels helps minimize protein degradation, resulting in better western blots. Three gel chemistry options and a variety of well formats allow you to choose the right gel designed for your specific protein.



Find the right gel at thermofisher.com/proteingelguide

Next-generation power supply for your high-throughput electrophoresis needs

The Invitrogen™ PowerEase™ Touch 350W Power Supply brings a high level of convenience to your electrophoresis experiments. With a bright, LCD touchscreen interface, you can enter in custom programs, or use the preprogrammed protocols for Invitrogen™ protein gels and gel transfers. It can run up to 8 midi gels or transfer up to 4 midi gels simultaneously.



Find out more at thermofisher.com/powerease

Run or transfer up to 2 Invitrogen midi gels in the same tank

The Invitrogen™ SureLock™ Tandem Midi Gel Tank was designed for easy and consistent vertical protein gel electrophoresis of 1 or 2 Invitrogen™ midi gels. When paired with the Invitrogen™ SureLock™ Tandem Midi Blot Module, this tank performs efficient, 30-minute, room-temperature, wet protein transfers. Separate chambers make it easy to run just one gel or transfer, allowing you to save on buffer and limit methanol waste and disposal costs. Save the time, planning, and mess required with other systems to pre-chill buffers, freeze ice packs, or prepare ice baths. Convenient precut membranes and filter papers are available to speed up your work.



Learn more at thermofisher.com/surelocktandem

Money-saving welcome packs to help you get started

Invitrogen midi gels are available in protein gels welcome packs, bundled with gels, buffers, and ladders, as well as a SureLock Tandem Midi Gel Tank at no extra cost. Welcome packs are also available that bundle the SureLock Tandem Midi Gel Tank, SureLock Tandem Midi Blot Modules, and transfer membranes. Another welcome pack bundles the SureLock Tandem Midi Gel Tank, the SureLock Tandem Midi Blot Module, and the PowerEase Touch 350W Power Supply.

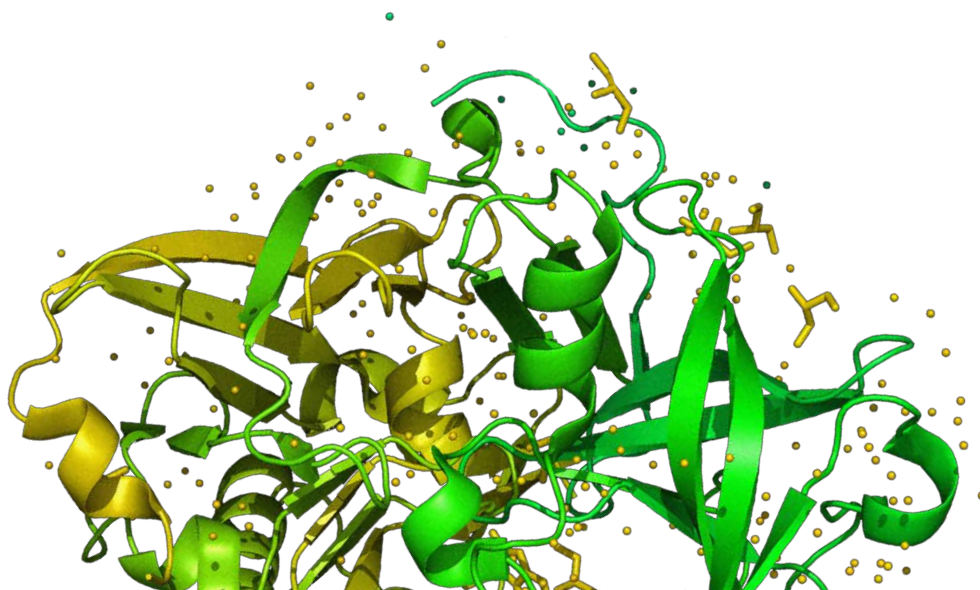
Find out more at
thermofisher.com/proteingelwelcome



Transfer up to 4 gels in only 10 minutes

With the Invitrogen™ Power Blotter XL System, you can transfer up to 2 midi gels or 4 mini gels simultaneously. Designed for rapid 5–10 min transfer of proteins from polyacrylamide gels to nitrocellulose or PVDF membranes, the Power Blotter system utilizes an integrated power supply, LCD touchscreen, and preprogrammed, optimized transfer protocols. Multiple transfer-stack consumable choices are available to simplify your work.

Find out more at thermofisher.com/powerblotter





Process up to 4 blots simultaneously

The Invitrogen™ Bandmate™ Automated Western Blot Processor is a programmable blot rocking system that automates the tedious hands-on blocking, washing, and antibody incubation steps of western blot processing. Minimal effort is required to set up the Bandmate device to process up to 2 midi blots or 4 mini blots using your current optimized reagents and protocols for blot processing, freeing up time for other important tasks.

Learn more at thermofisher.com/bandmate



Capture and analyze data from up to 4 blots at a time

The Invitrogen™ iBright™ Imaging Systems family of western blot and gel documentation instruments consists of three models: the iBright™ CL750 Imaging System, iBright™ CL1500 Imaging System, and iBright™ FL1500 Imaging System. Each model features a large functional imaging area that when combined with our advanced on-instrument analysis software (or our standalone cloud- and desktop-based Invitrogen™ iBright™ Analysis Software) enables the simultaneous capture and analysis of up to 2 midi or 4 mini blots in a single image. The flagship iBright FL1500 Imaging System features five fluorescence channels, permitting up to four-color fluorescent western blot multiplexing—expanding your possibilities for studying multiple proteins in a single blot without the need to strip and reprobe. Each iBright Imaging System model is also now offered with a 21 CFR Part 11 compliance support package.

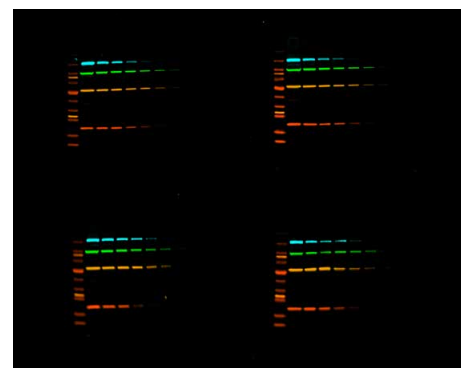


Image capture of 4 x 4-plex fluorescence western blots

Find out more at thermofisher.com/ibright



Extensive offering of validated* antibodies for western blotting

We offer thousands of Invitrogen™ primary antibodies, and we are continuously updating our portfolio with advanced verified products for use in western blotting.

Find your antibody at [thermofisher.com/antibodies](https://www.thermofisher.com/antibodies)

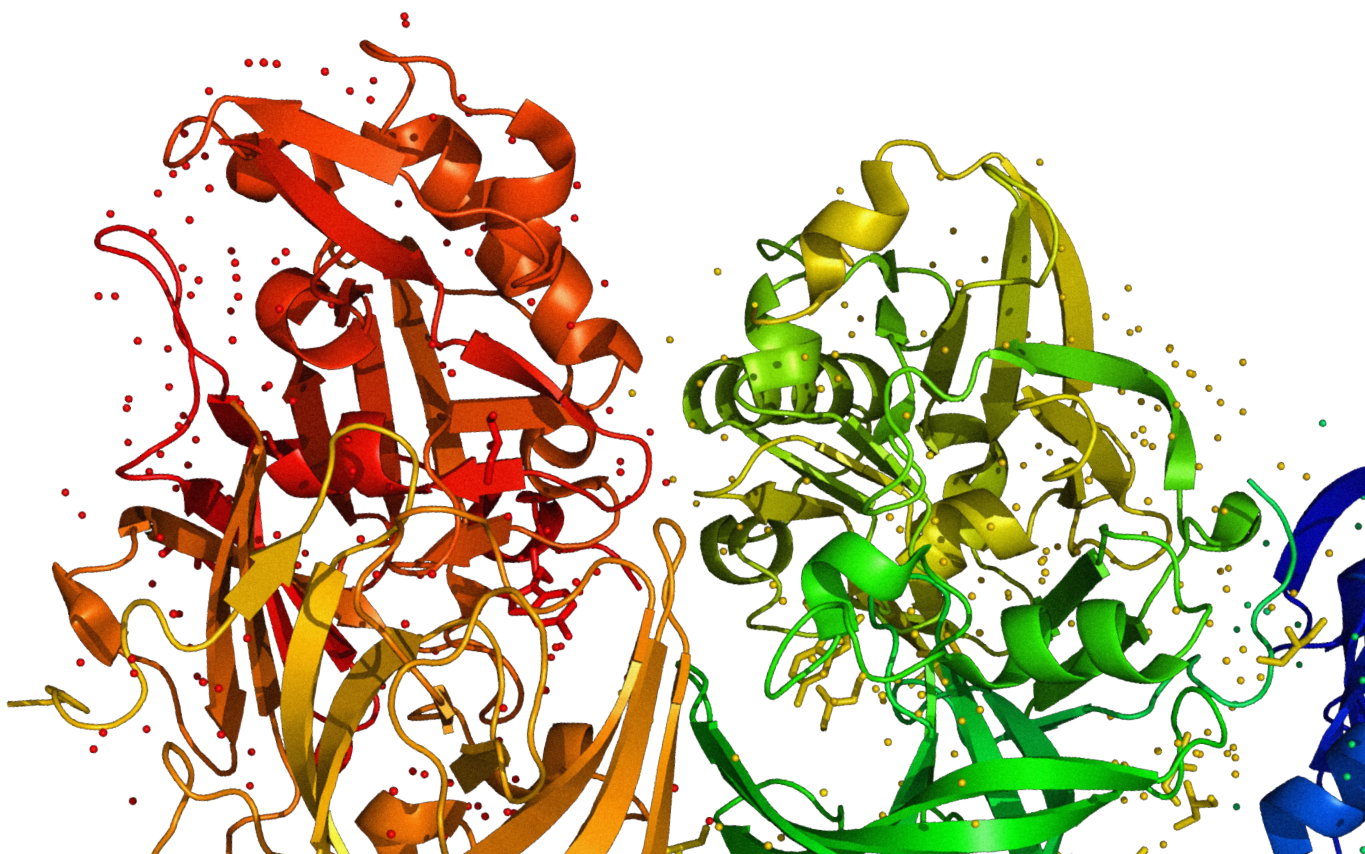
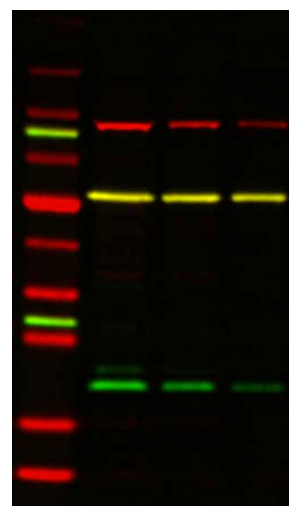
* The use or any variation of the word "validation" refers only to research use antibodies that were subject to functional testing to confirm that the antibody can be used with the research techniques indicated. It does not ensure that the product(s) was validated for clinical or diagnostic uses.

Produce more data from your samples with fluorescent multiplexing

Invitrogen™ Alexa Fluor™ Plus Secondary Antibodies can be used to provide accurate, quantitative results that enable you to detect and visualize low-abundance targets of precious samples in a multiplexed format. Alexa Fluor Plus Secondary Antibodies come conjugated to various optically distinct fluorophores—combine this with low cross-reactivity and high signal-to-noise ratio to easily identify multiple protein targets on a single fluorescent western blot.

Learn more at [thermofisher.com/secondaries](https://www.thermofisher.com/secondaries)

Get tips on how to optimize each step to achieve your best results at [thermofisher.com/5steps-multiplexwestern](https://www.thermofisher.com/5steps-multiplexwestern)



Quantitative western blotting made easier and more accurate

Invitrogen™ No-Stain™ Protein Labeling Reagent is easily and quickly used to fluorescently label all proteins on a blot post-transfer. After western blotting, the fluorescent total protein signal in each lane is used to normalize and quantitate target protein bands. No-Stain reagent does not interfere with western blotting, lets you use your favorite gel, helps you avoid the need to optimize, and provides more accurate quantitative results than the use of housekeeping proteins.

A how-to video and application note on the use of the No-Stain reagent and the iBright system for quantitative western blotting can be found at thermofisher.com/no-stain and thermofisher.com/ibright



Stay stocked and save more

We offer large pack sizes of our most popular buffers and ladders to meet your high-throughput electrophoresis needs.

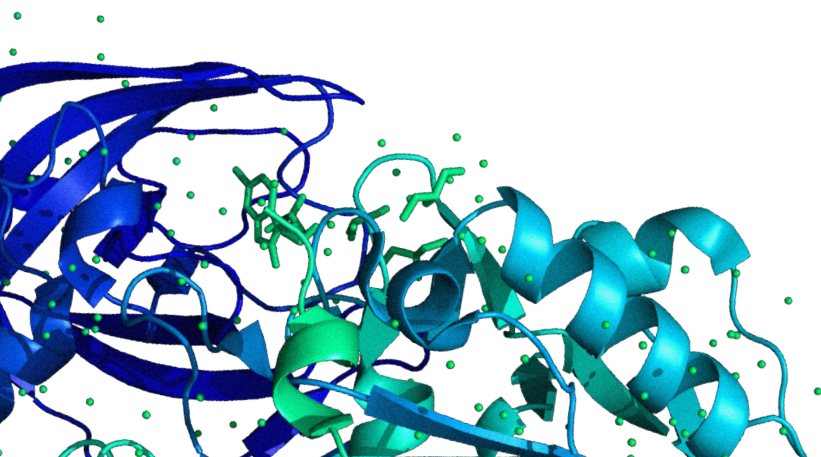
Invitrogen™ protein electrophoresis running buffers available in a 5 L pack size:

- Novex™ Tris-Glycine SDS Running Buffer
- NuPAGE™ MES SDS Running Buffer
- NuPAGE™ MOPS SDS Running Buffer

Thermo Scientific™ protein ladders are available in large pack sizes of 10 x 250 µL.

Invitrogen™ transfer buffers are also available in large sizes.

- NuPAGE™ Transfer Buffer (20X)
- Novex™ Tris-Glycine Transfer Buffer (25X)



Ordering information

	Quantity	Cat. No.
Separate and transfer		
NuPAGE 10% Bis-Tris Midi Protein Gels, 26-well	10 gels (1 box)	WG1203BOX
NuPAGE 4-12% Bis-Tris Midi Protein Gels, 26-well	10 gels (1 box)	WG1403BOX
Novex 4-12% Tris-Glycine Plus Midi Gels, 26-well	10 gels (1 box)	WXP41226BOX
NuPAGE 4-12% Bis-Tris Midi Welcome Pack, 26-well	1 pack	STM4002
SureLock Tandem Midi Gel Tank	1 tank	STM1001
SureLock Tandem Midi Welcome Pack, PVDF	1 pack	STM4014
PowerEase Touch 350W Power Supply (115 VAC)	1 device	PS0350
PowerEase Touch 350W Power Supply and SureLock Tandem Midi PVDF Welcome Pack	1 pack	PSC350STMPV
Power Blotter XL System	1 system	PB0013
Power Blotter XL Welcome Pack	1 kit	PB0113
Detect and image		
Bandmate Automated Western Blot Processor	1 system	BW1000
iBright FL1500 Imaging System	1 instrument	A44241
iBright CL1500 Imaging System	1 instrument	A44240
iBright CL750 Imaging System	1 instrument	A44116
Reagents and buffers		
No-Stain Protein Labeling Reagent	40 reactions	A44449
NuPAGE MES SDS Running Buffer (20X)	5 L	NP000202
NuPAGE MOPS SDS Running Buffer (20X)	5 L	NP000102
Novex Tris-Glycine SDS Running Buffer (10X)	5 L	LC26755
PageRuler Plus Prestained Protein Ladder, 10 to 250 kDa	10 x 250 µL	26620
NuPAGE Transfer Buffer (20X)	1 L	NP00061
Novex Tris-Glycine Transfer Buffer (25X)	500 mL	LC3675

Find out more at thermofisher.com/western

ThermoFisher
SCIENTIFIC