



# A bright new path to western blotting starts here

Laboratory supply checklist

For more information or to obtain a quote, please contact your sales representative:

# Get on your way to producing better western blots and clearer images

Great western blots start with reliable, high-quality Thermo Scientific™ and Invitrogen™ protein gel and western blotting products. Check out our comprehensive portfolio below.

## Gel electrophoresis, power supplies, and welcome packs

Our gel electrophoresis welcome packs come with a complete gel tank, gels, and buffers, and you can add on the specialized Invitrogen™ iBright™ Prestained Protein Ladder, which is optimized for use with Invitrogen™ iBright™ Imaging Systems.



## Ordering information

Product	Quantity	Cat. No.
PowerEase Touch 120W Power Supply	1 device	PS0120
PowerEase Touch 350W Power Supply	1 device	PS0350
SureCast Gel Handcast Bundle A - Hardware and Reagents	1 device/kit	HC1000SR
NuPAGE Bis-Tris or Tris-Acetate Precast Protein Gels, mini or midi	1 box of 10 gels	Various well number options available
Bolt Bis-Tris WedgeWell Precast Protein Gels, mini only	1 box of 10 gels	Various options available
Novex Tris-Glycine or Tricine Precast Protein Gels, mini or midi	1 box of 10 gels	Various options available
Invitrogen gel welcome packs <ul style="list-style-type: none"> <li>• Mini or Midi Gel Tank</li> <li>• 2 boxes of gels (mini or midi)</li> <li>• Running buffer</li> <li>• Sample buffer</li> <li>• Protein ladder</li> </ul>	1 kit	Various gel chemistry options available—inquire with sales representative
iBright Prestained Protein Ladder	2 x 250 µL	LC5615
Non-Reducing Fluorescent Compatible Sample Buffer (4X)	5 mL	LC2570
PageRuler Plus Prestained Protein Ladder, 10 to 250 kDa	2 x 250 µL	26619
PageRuler Prestained Protein Ladder, 10 to 180 kDa	2 x 250 µL	26616
PageRuler Unstained Broad Range Ladder	2 x 250 µL	26630
SimplyBlue SafeStain	1 L	LC6060
SYPRO Ruby Fluorescent Gel Stain	200 mL	S12001



## Transfer devices, reagents, and modules

Our nitrocellulose and PVDF membranes, blotting paper, and buffers transfer your proteins and keep you moving to great western blot results.



### Ordering information

Product	Quantity	Cat. No.
Mini Blot Module (for Mini Gel Tank)	1 unit	B1000
Midi Blot Module (for SureLock Tandem Midi Gel Tank)	1 unit	STM2001
iBlot 2 Starter Kit	1 device/kit	IB21001S
iBlot 2 Transfer Stacks, PVDF or nitrocellulose, mini or regular stack sizes	10 stacks/pack	Various options available
Power Blotter Welcome Pack	1 device/kit	PB0112
Power Blotter XL Welcome Pack	1 device/kit	PB0113
Power Blotter Select Transfer Stacks, PVDF or nitrocellulose, mini or regular stack sizes	10 stacks/pack 40 stacks/pack	Various options available
Invitrolon PVDF/Filter Paper Sandwich, 0.45 µm pore size	20/pack	LC2005
Low-Fluorescence PVDF Transfer Membrane, 7 cm x 8.4 cm	10 sheets	22860
Nitrocellulose Pre-Cut Blotting Membranes, 0.2 µm pore size	20/pack	LC2000
Nitrocellulose Pre-Cut Blotting Membranes, 0.45 µm pore size	20/pack	LC2001
PVDF Pre-Cut Blotting Membranes, 0.2 µm pore size	20/pack	LC2002
Nitrocellulose Membrane	1 roll, 0.45 µm, 30 cm x 3.5 m	88018
Nitrocellulose Membrane	1 roll, 0.2 µm, 26.5 cm x 3.5 m	88520
PVDF Transfer Membrane	1 roll, 0.45 µm 26.5 cm x 3.75 m	88518
Western Blotting Filter Paper	8 cm x 10.5 cm sheets (100 sheets)	88600
Bolt Transfer Buffer (20X)	1 L	BT00061
Novex Tris-Glycine Transfer Buffer (25X)	500 mL	LC3675
NuPAGE Transfer Buffer (20X)	1 L	NP00061

## Automated western blot processing

Automated western blot processors such as the Invitrogen™ iBind™ and Bandmate™ systems can significantly reduce hands-on time involved in the manual process of blocking, antibody incubation, and wash steps, while still providing consistent and reproducible results.



### Ordering information

Product	Quantity	Cat. No.
iBind Flex Western Starter Kit	1 device/kit	SLF2000S
iBind Flex Cards	10 cards/box	SLF2010
iBind Flex Solution	1 kit	SLF2020
Bandmate System	1 device	BW1000

## Western equipment and consumables bundles

Purchase multiple western blot devices together to take advantage of built-in savings

The Invitrogen™ Bolt™ + Invitrogen™ iBlot™ 2 Bundle contains a Mini Gel Tank, 10 gels, iBlot 2 device, Invitrogen™ SeeBlue™ ladder, nitrocellulose transfer stack, and running/sample buffers. The Complete Western Workflow Bundle contains everything needed to run an efficient western blot from gels, tank, iBlot device, iBind device, and all buffers and consumables.



### Ordering information

Product	Quantity	Cat. No.
Bolt + iBlot 2 Bundle with 4–12% 10-well gels	1 bundle	NW0412AIB2
Complete Western Workflow Bundle	1 bundle	IW3000S

## Total protein normalization labeling reagent

The Invitrogen™ No-Stain™ Protein Labeling Reagent provides a flexible, accurate, rapid, and reliable method to visualize and normalize proteins in a membrane (post-transfer) or a gel (Coomassie alternative).



### Ordering information

Product	Quantity	Cat. No.
No-Stain Protein Labeling Reagent (trial size)	10 stacks	A44717
No-Stain Protein Labeling Reagent	40 stacks	A44449

## Washing buffers

Our dry buffers and high-purity detergents serve to help enhance your signal-to-noise ratio.

### Ordering information

Product	Quantity	Cat. No.
BupH Phosphate Buffered Saline Packs (0.1 M sodium phosphate, 0.15 M NaCl, pH 7.2)	40 packs	28372
BupH Tris Buffered Saline Packs (25 mM Tris, 0.15 M NaCl, pH 7.2)	40 packs	28376
Pierce 20X PBS Tween 20 Buffer	500 mL	28352
Pierce 20X TBS Tween 20 Buffer	500 mL	28360
Tween-20 Surfact-Amps Detergent Solution (10% (w/v))	6 x 10 mL	28320

## Secondary antibodies

Our sensitive and verified HRP or fluorescent secondary antibodies, including Invitrogen™ Alexa Fluor™ Plus antibodies, are designed to provide brighter signal and enhanced sensitivity.



### Ordering information

Product	Quantity	Cat. No.
Goat Anti-Mouse IgG (H+L) Cross-Adsorbed, HRP Conjugated	1 mg	A16072
Goat Anti-Rabbit IgG (H+L) Cross-Adsorbed, HRP Conjugated	1 mg	A16104
Goat Anti-Rat IgG (H+L) Cross-Adsorbed, HRP Conjugated	0.5 mg	A10549
Donkey Anti-Goat IgG (H+L) Cross-Adsorbed, HRP Conjugated	1 mg	A16005
Alexa Fluor Plus Secondary Antibodies	Various	Various options available

## Blocking buffers

Our selection of blocking buffers enable superior signal and low background.



### Ordering information

Product	Quantity	Cat. No.
Blocker FL (10X) Fluorescent Blocking Buffer	100 mL	37565
SEA BLOCK Blocking Buffer	500 mL	37527
StartingBlock (PBS) Blocking Buffer	1 L	37538
StartingBlock (TBS) Blocking Buffer	1 L	37542
SuperBlock (PBS) Blocking Buffer	1 L	37515
SuperBlock (TBS) Blocking Buffer	1 L	37535

## Western blotting substrates

Thermo Scientific™ SuperSignal™ chemiluminescent HRP substrates offer excellent performance in western blotting with longer light emission and stronger signal intensity.



### Ordering information

Product	Quantity	Cat. No.
SuperSignal West Pico PLUS Chemiluminescent Substrate	200 mL	34577
	500 mL	34580
	1 L	34578
SuperSignal West Dura Chemiluminescent Substrate	100 mL	34075
	200 mL	34076
SuperSignal West Femto Maximum Sensitivity Substrate	100 mL	34095
	200 mL	34096
SuperSignal West Atto Ultimate Sensitivity Substrate	100 mL	A38555
	200 mL	A38556
Pierce ECL Western Substrate	500 mL	32109

## Stripping buffers

Thermo Scientific™ Restore™ products enable you to quickly strip and reprobe, and thus reuse the blot again and again, helping you save time, money, and aggravation. Working with high-affinity antibodies? Choose the Thermo Scientific™ Restore™ PLUS formula.

### Ordering information

Product	Quantity	Cat. No.
Restore Western Blot Stripping Buffer	500 mL	21059
Restore PLUS Western Blot Stripping Buffer	500 mL	46430

## Buffers and inhibitors for lysis and protein extraction

Obtain high protein yields and preserve protein activity.



### Ordering information

Product	Quantity	Cat. No.
RIPA Lysis and Extraction Buffer	250 mL	89901
Mem-PER Plus Membrane Protein Extraction Kit	300 mL	89842
Pierce Universal Nuclease for Cell Lysis	5 kU	88700
Lysozyme	5 g	89833
Subcellular Fractionation Kit for Cultured Cells	35 mL kit	78840
Pierce Protease Inhibitor Mini Tablets, EDTA Free	30 tablets	A32955
Pierce Protease Inhibitor Mini Tablets	30 tablets	A32953
Pierce Phosphatase Inhibitor Tablets	20 tablets	A32957
Halt Combined Protease and Phosphatase Inhibitor Cocktail	1 mL (100X)	78440

## Protein assays

Obtain highly accurate total protein concentration using our multiwell protein assays.

### Ordering information

Product	Quantity	Cat. No.
Pierce Rapid Gold BCA Protein Assay Kit	250 mL	A53226
Pierce Bovine Serum Albumin Standard Pre-Diluted Set	7 x 3.5 mL	23208
Pierce Detergent Compatible Bradford Assay Kit	300 test tube assays	23246



# Empower your lab

Experience stunningly easy digital western blot and gel imaging with iBright Imaging Systems

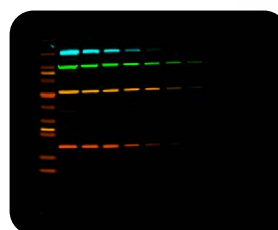


With the Invitrogen™ iBright™ CL1500 and FL1500 Imaging Systems, you can discover powerful image capture and analysis in systems that are easy to use for researchers of all experience levels. Whether you're imaging chemiluminescent western blots, stained protein or nucleic acid gels, or fluorescent blots, there's an iBright imaging solution for you.

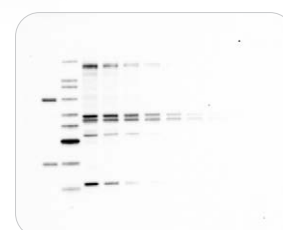
- **Powerful imaging**—Invitrogen™ Smart Exposure™ technology for rapid determination of optimal exposure time, combined with a 9.1 megapixel, cooled, charge-coupled device (CCD) camera
- **Load and go**—logical user interface and workflows, and automated zoom, focus, and sample rotation
- **Data analysis in seconds**—overlay molecular weight markers, perform densitometry analysis, and perform normalization using housekeeping proteins or total lane protein
- **Bring your blots to life**—multiplex with the five fluorescence channels of the iBright FL1500 system; capture up to four proteins in a single blot for more meaningful experiments

## Ordering information

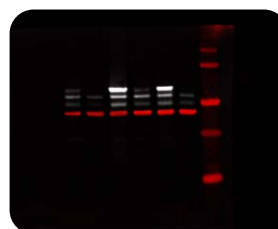
Product	Quantity	Cat. No.
iBright CL1500 Imaging System	1 device	Various options
iBright FL1500 Imaging System	1 device	Various options



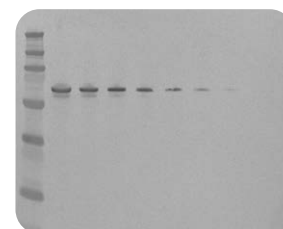
Fluorescent western blots



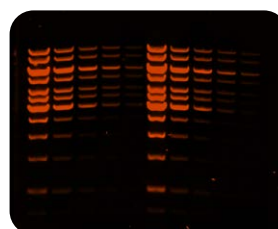
Chemiluminescent western blots



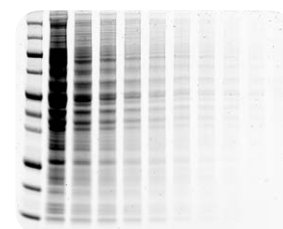
Combined fluorescent and chemiluminescent western blots



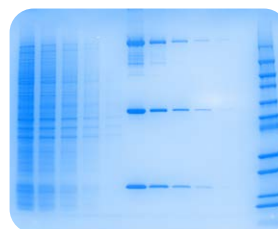
Colorimetric western blots



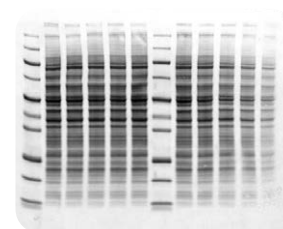
Fluorescent stained nucleic acid gels



Fluorescent stained protein gels



Colorimetric stained protein gels



Colorimetric stained membranes

Images for fluorescent stained nucleic acid gels and colorimetric stained protein gels are shown in pseudocolor (false color applied). Data were captured in grayscale.

See a complete selection of all of our western blotting products at [thermofisher.com/western](https://www.thermofisher.com/western)

**ThermoFisher**  
SCIENTIFIC