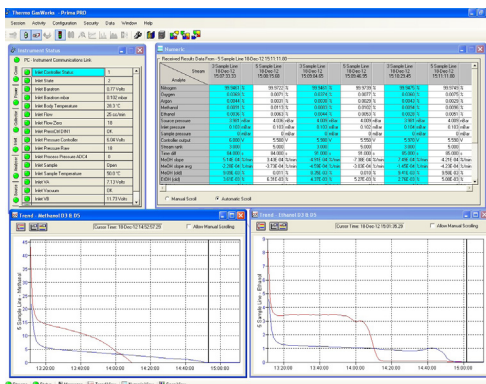


Frequently Asked Questions

QA



Common questions for
GasWorks software
for use with our
Process Gas Analyzers

Which Thermo Scientific instruments have GasWorks software integrated?

The Prima PRO, Prima BT, Sentinel PRO, APIX dQ and APIX Quattro

Is GasWorks set up to monitor the composition of a selected sample stream?

In addition to performing complex gas analysis, the analyzer can be set to provide Analog or Histogram Scans. The histogram scan can be used to investigate the composition of a selected sample stream, and can be included in the analytical schedule.

Are various languages available?

GasWorks is to be able to perform dynamic language switching without having to shutdown and restart the software. Available languages are English, Chinese, French, German, Korean, Portuguese and Spanish.

Is there a limitation to the number of analyses that can be named and defined?

There is an unlimited number of analysis methods with the ability to carry out different analyses on different streams. As requirements change it is possible to add new analysis configurations.

What file type is the data stored?

All data is stored as a CSV file.

What if I cannot connect to access the data?

GasWorks has its own data review program that can be installed on an office PC and reviewed offline.

What resources are available for training?

The System Wizard fully documents the analyzer hardware. This electronic manual allows the operator to drill down to a component of interest. A brief explanation of selected item is provided with tutorial views and a parts manual.

How secure is the software with multi-users?

A number of different user groups are defined by the system administrator. Each group can be provided with a configurable set of access permissions. The administrator is given the option of limiting the number of password retries, assigning an expiration date for passwords, enabling an audit trail and setting automatic log out.

How do I edit the register map if the analytical requirements change?

The Modbus Register Mapping Wizard requires the operator to respond to a series of questions regarding the data to be communicated and the address area to be reserved. This becomes an editable table of values.

Is the GasWorks software 21 CFR Part 11 compliant?

Information is provided to aid in the running of the Gasworks software in a 21 CFR Part 11 compliant environment. It should be noted that system qualification, validation and implementation of standard operating procedures are essential elements of Part 11 compliance that cannot be achieved through software functionality alone. While many of the requirements in the regulations are addressed by Thermo Fisher Scientific software features, all aspects of the system must be validated by the customer or their designee.

Find out more at thermofisher.com/processms