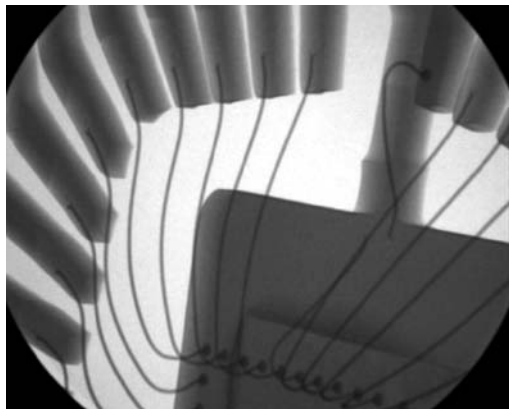


The Thermo Scientific X-Ray product line has been providing quality X-Ray sources to the industrial and medical imaging markets since 1978. Known and respected for innovation and superior microfocus technology, we are proud to introduce the next level of completely integrated, high resolution, 90 kV X-Ray source – the Thermo Scientific PXS5-926 microfocus X-Ray source.

Thermo Scientific PXS5-926 MicroFocus X-Ray Source 90kV



Thermo Scientific PXS5-926 X-Ray sources feature an integrated design with X-Ray tube, power supply, and control electronics in one package.



Lead frame with wire bonds

Description. The Thermo Scientific PXS5-926 is a 90kV microfocus X-Ray source for use in high-resolution imaging applications. The small spot size and high magnification, combined with stable output allow superior quality 2D and 3D images. It combines the end window X-Ray tube, high-voltage power supply, and controller in one compact package powered from a 12 VDC source.

Applications. The high-performance Thermo Scientific PXS5-926 X-Ray source is the ideal choice for:

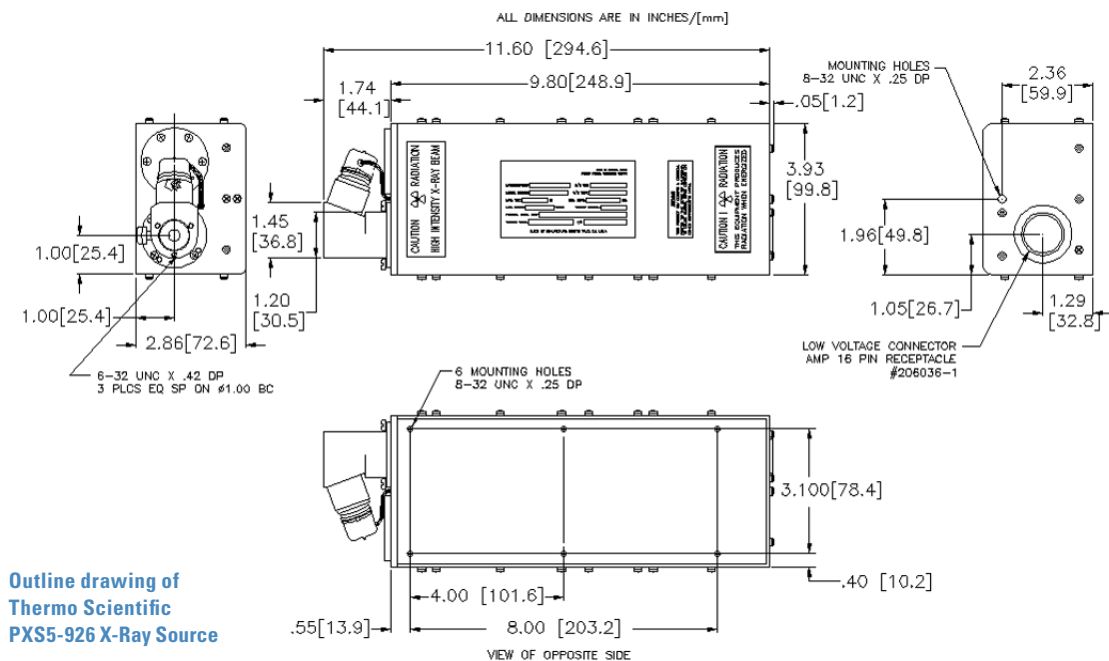
- Manual inspection of printed circuit boards and electronic devices
- Nondestructive test requiring high-resolution imaging of metal and plastic parts
- Micro-CT imaging for industrial and life sciences applications

Benefits. Thermo Scientific PXS5-926 X-Ray sources offer many attractive benefits:

- Small, round spot optimized over the range of operating voltage and power for distortion-free images
- 5 micron spot at 4 watts for highest resolution imaging
- 8.5 mm spot-to-window spacing provides exceptional geometric magnification
- X-Ray tube, power supply, and control electronics in one compact package make system integration easy

Thermo Scientific PXS5-926 Specifications

Operating Voltage Range	20-90kV
Maximum Power	8 watts, 45-90kV
Maximum Beam Current	.178 mA @ 45kV
Spot Size	5 microns @ 4 watts, 60 to 90kV 7 microns @ 4 watts, 45 to 60kV 9 microns @ 8 watts, 45 to 90kV
Spot Ellipticity	±10% @ 8 watts, 90kV (either axis referred to average)
Cone of Illumination	45° round beam
Spot to Window Spacing	8.5 mm (.33 in.)
Window Diameter	Approximately 11.7 mm (.46 in.)
Window Material and Thickness	Beryllium: 0.127 mm (.005 in.)
Target Material	Tungsten
Spot Location Stability	Typically <10 microns in 4 hours after 10-minute warm up
Flux Stability	Typically < +/- 2% in 4 hours after 10-minute warm up
Ambient Temperature and Humidity	0 to 32 °C, 0-95% RH, up to 5,000 feet
Method of Cooling	Cooling air must be directed at the unit to maintain the tube mounting plate temperature below 50 °C (below 40 °C is recommended).
Shielding	X-Ray leakage behind the X-Ray tube is less than 0.5mR/hour, measured one inch away with Victoreen 190.
Weight	Approximately 3.6 kg (8 lb.)
Input Power	12-14 VDC, 4A
Control Interface	Analog control and monitoring of operating conditions and status



Outline drawing of
Thermo Scientific
PXS5-926 X-Ray Source

©2011 Thermo Fisher Scientific Inc. All rights reserved. All trademarks are the property of Thermo Fisher Scientific Inc. and its subsidiaries. Specifications, terms and pricing are subject to change. Not all products are available in all countries. Please consult your local sales representative for details.

320 El Pueblo Road, Scotts Valley, CA 95066
831-438-5940 ph 831-438-5892 fax

www.thermoscientific.com
1-210 09/2011

Thermo
SCIENTIFIC