

Determination of High Sugar Concentrations in an Irish Whiskey Sample Using a Compact Ion Chromatography System

Terri Christison and Jeff Rohrer, Thermo Fisher Scientific, Sunnyvale, CA, USA

Key Words

RFIC, HPAE-PAD, Dionex Integrion RFIC System, Dionex CarboPac PA20 Column, Dionex EGC 500 KOH Eluent Generator, Alcohol

Introduction

This application proof note demonstrates the determinations of glucose, fructose, and sucrose in a 5-fold diluted Irish whiskey sample by HPAE-PAD. Typically, samples with g/L concentrations require greater than 1000-fold dilutions to remain in the linear range of the very sensitive HPAE-PAD technique. However, in this proof note, the method is performed using a Thermo Scientific™ Dionex™ Integrion™ RFIC™ system equipped with a 0.4 µL internal injection loop and the Thermo Scientific™ High Concentration Carbohydrate Analysis Kit¹ to extend the linearity from low mg/L to g/L concentrations. A wood hydrolysate application using this technique is available for reference.²

Method

IC System:	Thermo Scientific Dionex Integrion RFIC system with column heater
Columns:	Thermo Scientific™ Dionex™ CarboPac™ PA20 Analytical (3 × 150 mm) Thermo Scientific Dionex CarboPac PA20 Guard (3 × 30 mm)
Eluent:	35 mM KOH with 100 mM KOH wash
Flow Rate:	0.50 mL/min
Injection Volume:	0.4 µL
Temperature:	30 °C
Detection:	Pulsed amperometric, disposable Au on PTFE working, 62 mil gasket

Reference

1. Thermo Scientific Product Specification 70749: Thermo Scientific High Concentration Carbohydrate Analysis Kit, Sunnyvale, CA [Online] <https://www.thermoscientific.com/content/dam/tfs/ATG/CMD/CMD Documents/Product Manuals & Specifications/PS-70749-High-Concentration-Carbohydrate-Analysis-Kit-PS70749-EN.pdf> (accessed Jan. 14, 2016)
2. Thermo Scientific Application Note 1089: Determination of Carbohydrates in Acid Hydrolysates of Wood, Sunnyvale, CA [Online] <http://www.thermoscientific.com/content/dam/tfs/ATG/CMD/CMD Documents/Application & Technical Notes/Chromatography/Ion Chromatography/AN-1089-Carbohydrates-Acid-Hydrolysates-Wood-AN70941-EN.pdf> (accessed Jan. 14, 2016)

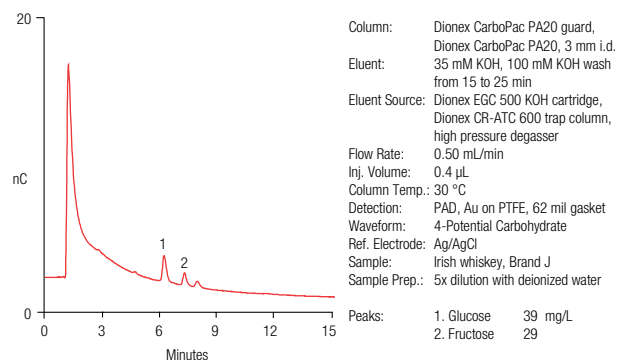


Figure 1. Separation of sugars in an Irish whiskey sample.

For application support, visit the [AppsLab Library](#) where you can find detailed method information, chromatograms and related compound information. All the information needed to run, process and report the analysis is available in ready-to-use eWorkflows, which can be executed directly in your chromatography data system. www.thermoscientific.com/appslab



www.thermoscientific.com/integrion

©2016 Thermo Fisher Scientific Inc. All rights reserved. ISO is a trademark of the International Standards Organization. All other trademarks are the property of Thermo Fisher Scientific and its subsidiaries. This information is presented as an example of the capabilities of Thermo Fisher Scientific products. It is not intended to encourage use of these products in any manners that might infringe the intellectual property rights of others. Specifications, terms and pricing are subject to change. Not all products are available in all countries. Please consult your local sales representative for details.

AB71911-EN 0116S



Thermo Fisher Scientific,
Sunnyvale, CA USA is
ISO 9001 Certified.

Thermo
SCIENTIFIC

A Thermo Fisher Scientific Brand