

# Lithium Isotope Measurements Using Thermo Scientific NEPTUNE Multicollector ICP-MS

Claudia Bouman, Johannes B. Schwieters, Thermo Fisher Scientific, Bremen, Germany

## Key Words

- NEPTUNE
- International Rock Standards
- Lithium Isotopes
- Multicollector ICP-MS
- NIST L-SVEC
- Static Collection

## Introduction

Precise isotopic analysis of Li is required in a number of different applications, including geochemistry and nuclear sciences. Thermal Ionization Mass Spectrometry (TIMS) is the preferred technique used for precise measurements of the  ${}^7\text{Li}/{}^6\text{Li}$  ratio. A new technique for Li isotope analysis is Multicollector Inductively Coupled Plasma Mass Spectrometry (MC-ICP-MS) (e.g. Tomascak et al. 1999a,b). Here, we report on the short-term reproducibility of Li isotope analyses of NIST L-SVEC lithium carbonate standard and two international rock standards, BHVO-1 (USGS) and JG-2 (GSJ) with the Thermo Scientific NEPTUNE MC-ICP-MS.

## Experimental

Samples are introduced in the ICP using a low flow self-aspirating PFA concentric nebulizer (uptake rate  $\sim 80 \mu\text{l}/\text{min}$ ) and a quartz dual spray chamber ("stable introduction system"). The Thermo Scientific NEPTUNE MC-ICP-MS allows simultaneous measurement of  ${}^6\text{Li}^+$  and  ${}^7\text{Li}^+$  using the moveable low mass and high mass Faraday cups of the collector array (on platforms L4 and H4, respectively). The analysis sequence was: blank, L-SVEC standard, blank, sample 1, blank, L-SVEC standard, blank, sample 2, blank etc., so that the blank (an 'on peak' zero) was measured before and after each sample or standard. 0.5% Triton X100 (Merck) was added to standards, samples and blanks to improve beam stability. After initial uptake of sample (60 s), the analysis was started.

The reproducibility of Li isotope measurements was evaluated by analyzing a 200 ppb Li L-SVEC standard giving a typical  ${}^7\text{Li}$  beam intensity of  $\sim 4 \text{ V}$  ( $4 \times 10^{-11} \text{ A}$  at  $10^{11} \Omega$  resistor). With an uptake rate of  $80 \mu\text{l}/\text{min}$ , approximately 80 ng of sample were consumed during one analysis lasting about 5 minutes (3 blocks of 10 ratios, 8 s per ratio measurement). To minimize memory effects, the aspiration system was rinsed for at least 5 minutes in 3%  $\text{HNO}_3$  after each analysis to ensure that an appropriate blank value is reached.

## Results

### L-SVEC Li Standard

Figure 1 shows the short-term reproducibility of the Li isotope measurements on the L-SVEC standard solution. One analysis of three blocks (30 ratios) results in an internal precision of  $\sim 0.2 \text{ ‰}$  ( $1 \sigma$ ). The external reproducibility ( $n = 8$ ) for  ${}^7\text{Li}/{}^6\text{Li}$  is also about  $0.2 \text{ ‰}$  ( $1 \sigma$ ). While the mass bias is large, around 25 % per amu ( ${}^7\text{Li}/{}^6\text{Li}$  L-SVEC =  $12.02 \pm 0.03 \text{ ‰}$ ; Flesch et al., 1973 vs. 15.0-15.2 ‰, Figures 1 and 2) and varies with time, long-term variations are rather small (within 2 %) and the  ${}^7\text{Li}/{}^6\text{Li}$  ratio of the L-SVEC standard varies around a mean of 15.

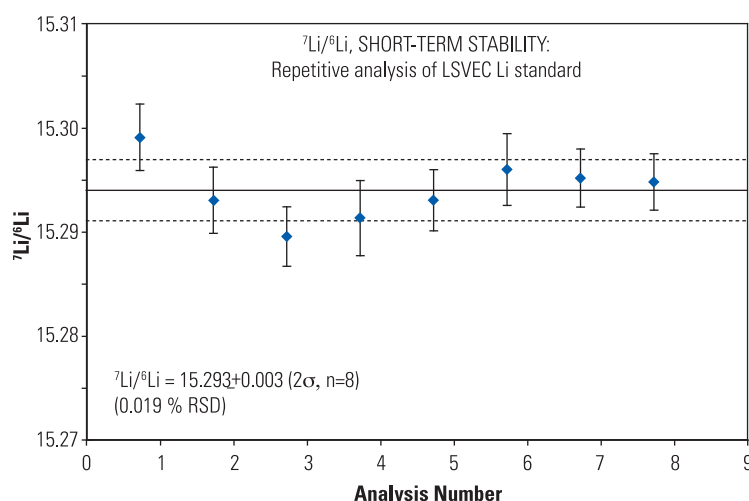


Figure 1: Short-term reproducibility of Li isotope measurements (L-SVEC Li standard, 200 ppb). Duration: 4 hours.

## International Rock Standards

Li isotope analyses of two international standards, BHVO-1 and JG-2, were performed to ensure the reliability of Li isotope data obtained by MC-ICP-MS. The measured  ${}^7\text{Li}/{}^6\text{Li}$  of the samples were normalized to the mean of the measured  ${}^7\text{Li}/{}^6\text{Li}$  of the standard runs before and after (linear interpolation). Data are presented as deviations of the measured  ${}^7\text{Li}/{}^6\text{Li}$  in part per thousand from the  ${}^7\text{Li}/{}^6\text{Li}$  of the standard ( $\delta^7\text{Li}$ ).

$$\delta^7\text{Li} (\text{‰}) = \left( \frac{R_{\text{sa}}}{R_{\text{st}}} - 1 \right) \times 10^3$$

where  $R_{\text{sa}}$  is the  ${}^7\text{Li}/{}^6\text{Li}$  ratio of the sample and  $R_{\text{st}}$  is the  ${}^7\text{Li}/{}^6\text{Li}$  ratio of the L-SVEC standard.

Figure 2 shows the results of the Li isotope analyses of BHVO-1 and JG-2. The Li isotope compositions for JG-2 are in good agreement with the values reported by Oi et al. (1997) and James and Palmer (2000). There are no published data for BHVO-1. However, our results for BHVO-1 agree well with MC-ICP-MS analysis for a suite of other Hawaiian basalts, which define a range in  $\delta^7\text{Li}$  of +3.0 to +4.8‰ (Tomascak et al., 1999b).

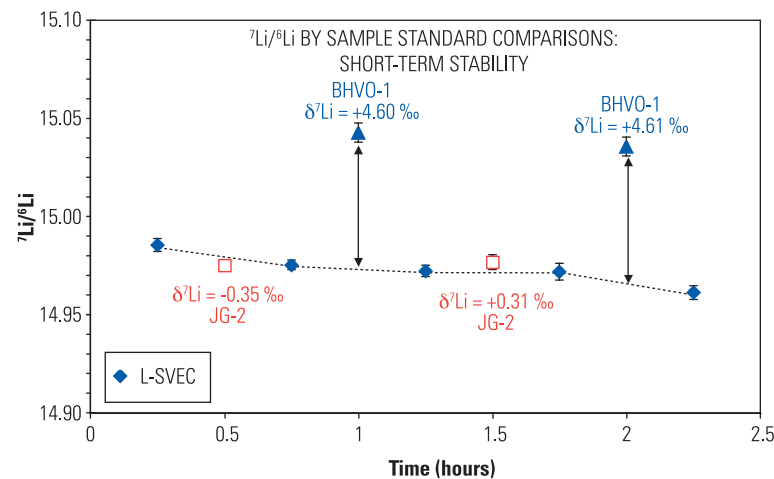


Figure 2: Li isotope analyses of international rock standards BHVO-1 and JG-2.  $\delta$  values (in ‰) are given relative to the L-SVEC Li standard.

## References

- Flesch G., Anderson A.R., and Svec H.J. (1973) A secondary isotopic standard for  ${}^6\text{Li}/{}^7\text{Li}$  determinations, *International Journal of Mass Spectrometry and Ion Physics* 12 265-272.
- James R.H., and Palmer M.R. (2000) The lithium isotope composition of international rock standards, *Chemical Geology* 166 319-326.
- Oi T., Odagiri T., and Nomura M. (1997) Extraction of lithium from GSJ rock reference samples and determination of their lithium isotopic composition, *Analytica Chimica Acta* 340 221-225.
- Tomascak P., Carlson R.W., and Shirey S.B. (1999a) Accurate and precise determination of Li isotopic compositions by multi-collector sector ICP-MS, *Chemical Geology* 158 145-154.
- Tomascak P., Tera F., Helz R.T., and Walker R.J. (1999b) The absence of lithium isotope fractionation during basalt differentiation: New measurements by multicollector sector ICP-MS, *Geochimica et Cosmochimica Acta* 63 907-910.

In addition to these offices, Thermo Fisher Scientific maintains a network of representative organizations throughout the world.

**Africa**  
+43 1 333 5034 127

**Australia**  
+61 2 8844 9500

**Austria**  
+43 1 333 50340

**Belgium**  
+32 2 482 30 30

**Canada**  
+1 800 530 8447

**China**  
+86 10 8419 3588

**Denmark**  
+45 70 23 62 60

**Europe-Other**  
+43 1 333 5034 127

**France**  
+33 1 60 92 48 00

**Germany**  
+49 6103 408 1014

**India**  
+91 22 6742 9434

**Italy**  
+39 02 950 591

**Japan**  
+81 45 453 9100

**Latin America**  
+1 608 276 5659

**Middle East**  
+43 1 333 5034 127

**Netherlands**  
+31 76 579 55 55

**South Africa**  
+27 11 570 1840

**Spain**  
+34 914 845 965

**Sweden/Norway/Finland**  
+46 8 556 468 00

**Switzerland**  
+41 61 48784 00

**UK**  
+44 1442 233555

**USA**  
+1 800 532 4752

[www.thermo.com](http://www.thermo.com)

## Legal Notices

©2004, 2008 Thermo Fisher Scientific Inc. All rights reserved. All trademarks are the property of Thermo Fisher Scientific Inc. and its subsidiaries. This information is presented as an example of the capabilities of Thermo Fisher Scientific Inc. products. It is not intended to encourage use of these products in any manners that might infringe the intellectual property rights of others. Specifications, terms and pricing are subject to change. Not all products are available in all countries. Please consult your local sales representative for details.

Thermo Fisher Scientific (Bremen) GmbH is certified DIN EN ISO 9001:2000

AN30014\_E 01/08C