

# Glycol Analyzer

Be compliant with regulatory requirements using Glycol analyzer for cough syrups.

Experience an innovative modular GC that is versatile, easy to use, and robust enough to confidently handle your most challenging applications

- Comply with the WHO, USP & IP requirements for EG and DEG content in cough syrups.
- Automatic calculations with Thermo Scientific™ Chromeleon™ Chromatography Data System
- Complete solution from sample analysis to reporting for the finished formulations and the excipients

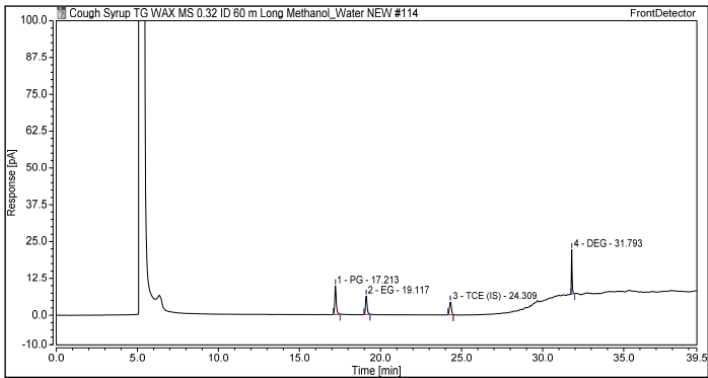


Thermo Scientific™ TRACE™ GC Series

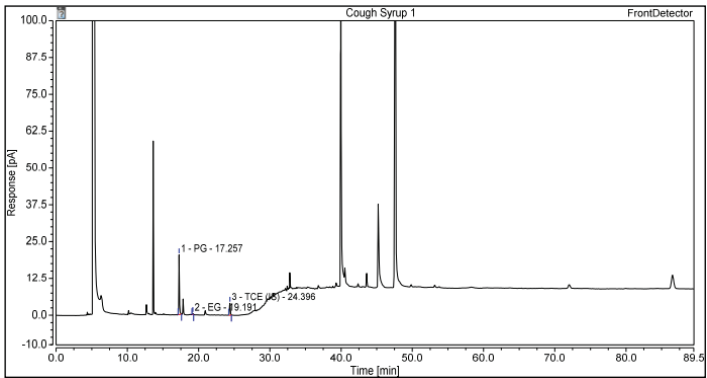
## Sample analysis and application support provided:

Our Centre of Excellences in India develops critical and integrated solutions that help build end to end workflow capacity for APIs and formulation testing in India

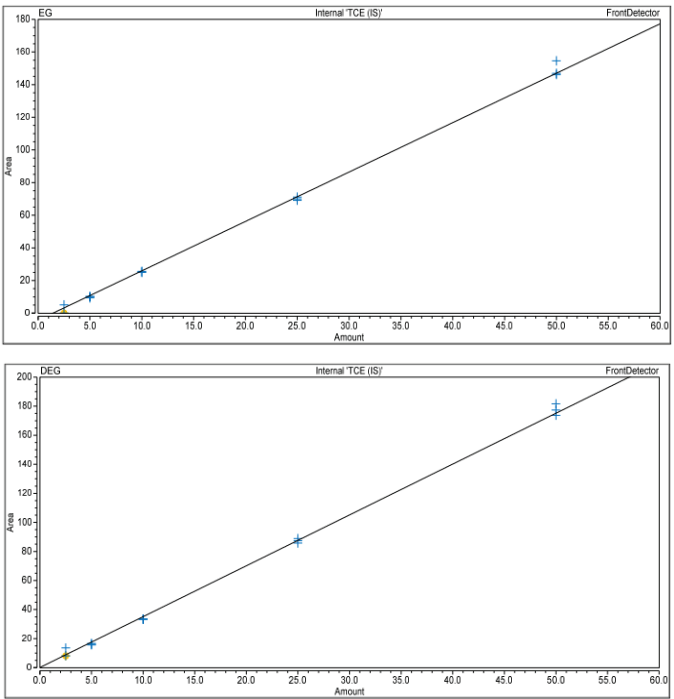
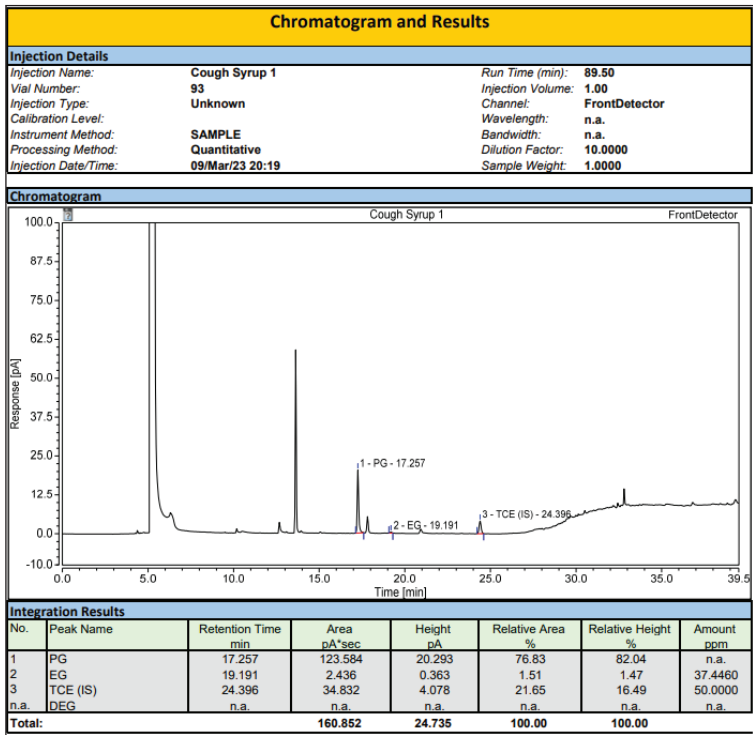




Chromatogram for EG and DEG standard



Chromatogram for Cough Syrup



Linearity graph for EG and DEG

Chromeleon Report with automated calculations for EG and DEG content in cough syrup

Instrumentation: Trace™ Series GC  
Injector: Split/Splitless Injector Module  
Detector: Flame Ionisation Detector Module  
CDS: Thermo Scientific Chromeleon CDS  
Autosampler: Thermo Scientific Liquid Autosampler

For more information on the method: please contact [analyze.in@thermofisher.com](mailto:analyze.in@thermofisher.com)

Learn more at [thermofisher.com/in/en/home/industrial/chromatography](https://thermofisher.com/in/en/home/industrial/chromatography)

For Research Use Only. Not for use in diagnostic procedures. ©2024 Thermo Fisher Scientific Inc. All rights reserved. All trademarks are the property of Thermo Fisher Scientific and its subsidiaries. This information is presented as an example of the capabilities of Thermo Fisher Scientific products. It is not intended to encourage use of these products in any manners that might infringe the intellectual property rights of others. Specifications, terms and pricing are subject to change. Not all products are available in all countries. Please consult your local sales representatives for details.