



(U)HPLC columns

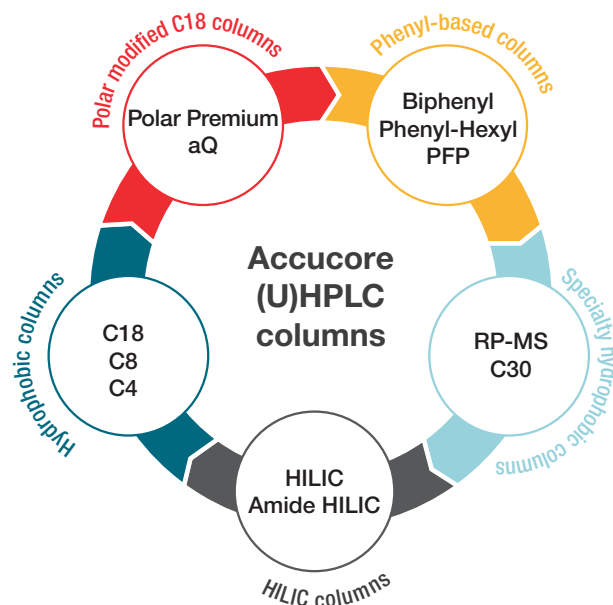
## Accucore columns

Resolve all your impurities without feeling the pressure

With Thermo Scientific™ Accucore™ Columns, experience UHPLC-level performance even with HPLC systems that have limited pressure capabilities.

With 14 distinct chemistries, utilize a comprehensive toolbox for successful method development.

Trust in our long history of innovation and expertise in HPLC stationary phase development, method development, and method transfer.



## Discover high-throughput columns for rapid (U)HPLC separations

Stationary phase	Chemistry	Description
Hydrophobic	C18, C8, C4, C18+	Reversed phase chemistry for separation via hydrophobic interactions. Stationary phases with longer carbon chains provide longer retention times and greater hydrophobicity
Polar-modified C18	Polar Premium, aQ	Good for the separation of acidic and basic compounds via reversed phase chromatography using an aqueous mobile phase
Phenyl-based	Biphenyl, Phenyl-Hexyl, PFP	Orthogonal selectivity to traditional hydrophobic phases that utilizes aromatic interactions to achieve challenging separations of aromatic and polar compounds
Specialty hydrophobic	RP-MS, C30	Alternative selectivity to C18 for hydrophobic retention and the geometric separation of structural isomers
Hydrophilic	HILIC, Amide HILIC	Ideal for retaining and separating polar compounds based on polarity differences and affinity for a polar stationary phase

## Ordering information

Stationary phase	Particle size (µm)	Pore size (Å)	Carbon load (%)	Surface area (m²/g)	USP
<a href="#">Accucore C18</a>	2.6	80	9	130	L1
<a href="#">Accucore Vanquish C18+</a>	1.5	80	6.5	110	L1
<a href="#">Accucore XL C18</a>	4	80	7	90	L1
<a href="#">Accucore C8</a>	2.6	80	5	130	L7
<a href="#">Accucore XL C8</a>	4	80	4	90	L7
<a href="#">Accucore 150-C4</a>	2.6	150	2	80	L26
<a href="#">Accucore aQ</a>	2.6	80	9	130	L1
<a href="#">Accucore Polar Premium</a>	2.6	150	7	90	L60
<a href="#">Accucore RP-MS</a>	2.6	80	7	130	–
<a href="#">Accucore C30</a>	2.6	150	5	80	L62
<a href="#">Accucore Biphenyl</a>	2.6	80	6	130	L11
<a href="#">Accucore Phenyl-Hexyl</a>	2.6	80	5	130	L11
<a href="#">Accucore PFP</a>	2.6	80	5	130	L43
<a href="#">Accucore Phenyl-X</a>	2.6	80	5	130	–
<a href="#">Accucore HILIC</a>	2.6	80	–	130	L3
<a href="#">Accucore 150-Amide-HILIC</a>	2.6	150	–	80	–

 Learn more at [thermofisher.com/accucore](https://thermofisher.com/accucore)