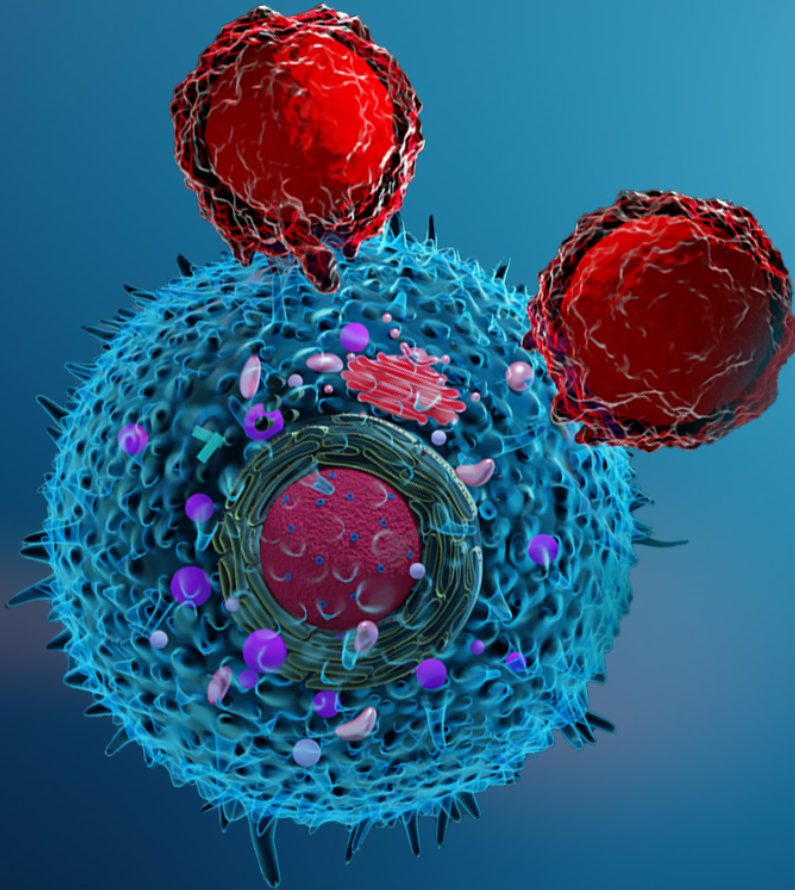
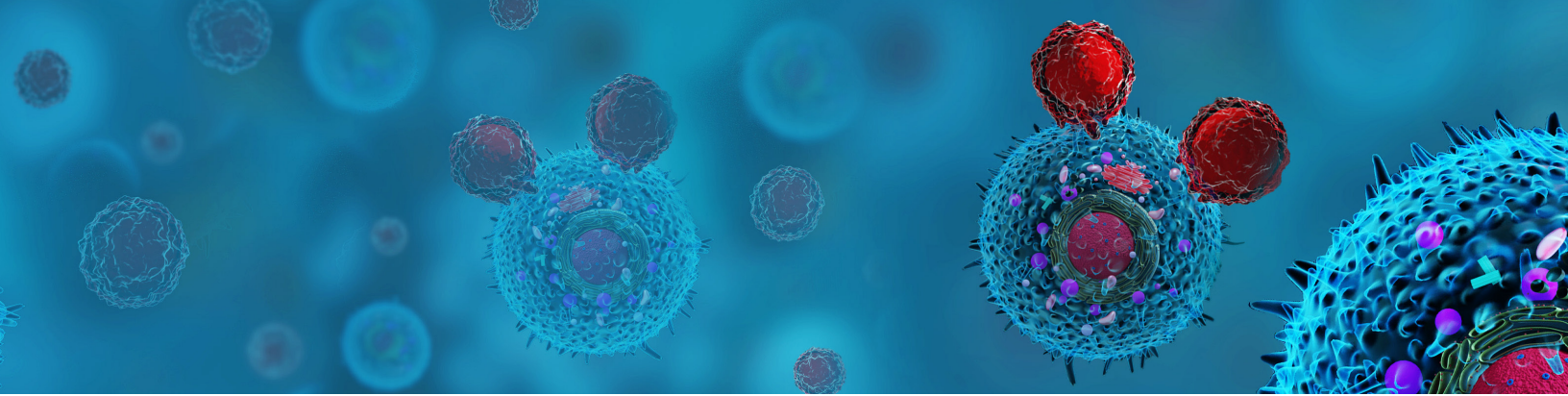


# Immunopeptidomics

Q Exactive HF MS literature list





### **Immunopeptidomics-based design of mRNA vaccine formulations against *Listeria monocytogenes***

Rupert L. Mayer, Rein Verbeke, Caroline Asselman, Ilke Aernout, Adillah Gul, Denzel Eggermont, Katie Boucher, Fabien Thery, Teresa M. Maia, Hans Demol, Ralf Gabriels, Lennart Martens, Christophe Bécavin, Stefaan C. De Smedt, Bart Vandekerckhove, Ine Lentacker, and Francis Impens

*Nat Commun* . 2022 Oct 14;13(1):6075

<https://www.nature.com/articles/s41467-022-33721-y>

### **Direct identification of clinically relevant neoepitopes presented on native human melanoma tissue by mass spectrometry**

Michal Bassani-Sternberg, Eva Bräunlein, Richard Klar, Thomas Engleitner, Pavel Sinitcyn, Stefan Audehm, Melanie Straub, Julia Weber, Julia Slotta-Huspenina, Katja Specht, Marc E. Martignoni, Angelika Werner, Rüdiger Hein, Dirk H. Busch, Christian Peschel, Roland Rad, Jürgen Cox, Matthias Mann, and Angela M. Krackhardt

*Nat Commun* . 2016 Nov 21;7:13404

<https://www.nature.com/articles/ncomms13404>

### **A T cell receptor targeting a recurrent driver mutation in *FLT3* mediates elimination of primary human acute myeloid leukemia in vivo**

Eirini Giannakopoulou, Madeleine Lehander, Stina Virding Culleton, Weiwen Yang, Yingqian Li, Terhi Karpanen, Tetsuichi Yoshizato, Even H. Rustad, Morten Milek Nielsen, Ravi Chand Bollineni, Trung T. Tran, Marina Delic-Sarac, Thea Johanne Gjerdingen, Karolos Douvlataniotis, Maarja Laos, Muhammad Ali, Amy Hillen, Stefania Mazzi, Desmond Wai Loon Chin, Adi Mehta, Jeppe Sejerø Holm, Amalie Kai Bentzen, Marie Bill, Marieke Griffioen, Tobias Gedde-Dahl, Sören Lehmann, Sten Eirik W. Jacobsen, Petter S. Woll, and Johanna Olweus

*Nat Commun* . 2016 Nov 21;7:13404

<https://www.nature.com/articles/s43018-023-00642-8>

### **Tumour-reactive T cell subsets in the microenvironment of ovarian cancer**

Marie Christine Wulff Westergaard, Rikke Andersen, Chloé Chong, Julie Westerlin Kjeldsen, Magnus Pedersen, Christina Friese, Thomas Hasselager, Henrik Lajer, George Coukos, Michal Bassani-Sternberg, Marco Donia, and Inge Marie Svane

*Br J Cancer* . 2019 Feb;120(4):424-434

<https://www.nature.com/articles/s41416-019-0384-y>

### **Human leukocyte antigen class II quantification by targeted mass spectrometry in dendritic-like cell lines and monocyte-derived dendritic cells**

A. Casasola-LaMacchia, M. S. Ritorto, R. J. Seward, N. Ahyi-Amendah, A. Ciarla, T. P. Hickling, and H. Neubert

*Sci Rep* . 2021 Jan 13;11(1):1028

<https://www.nature.com/articles/s41598-020-77024-y>

### **Reversion analysis reveals the in vivo immunogenicity of a poorly MHC I-binding cancer neoepitope**

Hakimeh Ebrahimi-Nik, Marmar Moussa, Ryan P. Englander, Summit Singhaviranon, Justine Michaux, HuiSong Pak, Hiroko Miyadera, William L. Corwin, Grant L. J. Keller, Adam T. Hagymasi, Tatiana V. Shcheglova, George Coukos, Brian M. Baker, Ion I. Mandoiu, Michal Bassani-Sternberg, and Pramod K. Srivastava

*Sci Rep* . 2021 Jan 13;11(1):1028

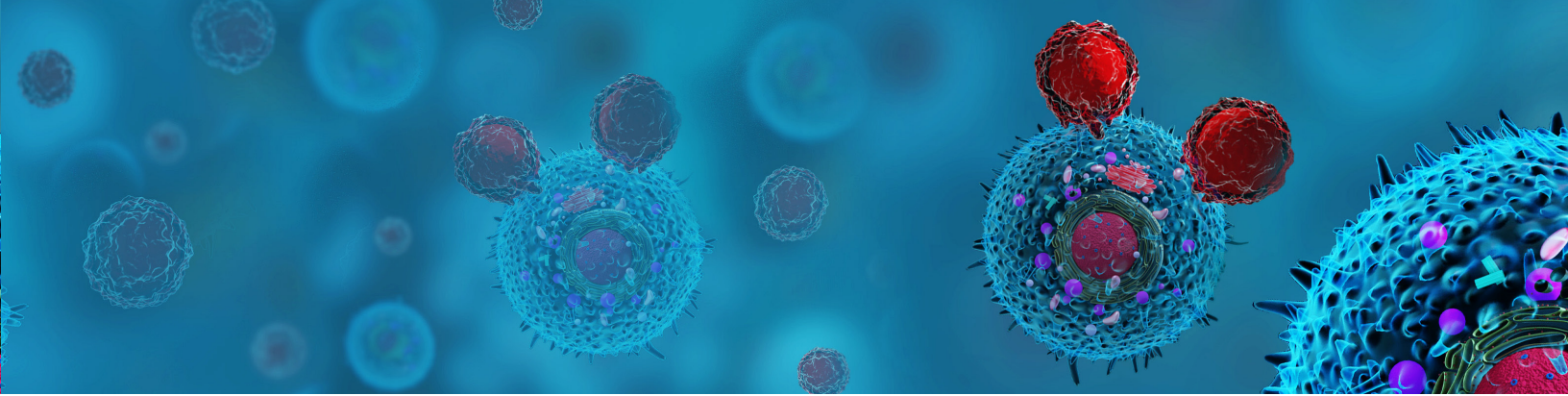
<https://www.nature.com/articles/s41467-021-26646-5>

### **Increased soluble HLA in COVID-19 present a disease-related, diverse immunopeptidome associated with T cell immunity**

Annika Nelde, Jonas Rieth, Malte Roerden, Marissa L. Dubbelaar, Naomi Hoenisch Gravell, Jens Bauer, Reinhild Klein, Tobias Hoheisel, Hartmut Mahrhofer, Siri Göpel, Michael Bitzer, Sebastian Hörber, Andreas Peter, Jonas. Heitmann, and Juliane S. Walz

*iScience* . 2022 Dec 22;25(12):105643

<https://www.sciencedirect.com/science/article/pii/S2589004222019150>



### **Induced pluripotent stem cells display a distinct set of MHC I-associated peptides shared by human cancers**

Anca Apavaloaei, Leslie Hesnard, Marie-Pierre Hardy, Basma Benabdallah, Gregory Ehx, Catherine Thériault, Jean-Philippe Laverdure, Chantal Durette, Joël Lanoix, Mathieu Courcelles, Nandita Noronha, Kapil Dev Chauhan, Sébastien Lemieux, Christian Beauséjour, Mick Bhatia, Pierre Thibault, and Claude Perreault

*Cell Rep* . 2022 Aug 16;40(7):111241

<https://www.sciencedirect.com/science/article/pii/S221124722010580>

### **Immuno-transcriptomic profiling of extracranial pediatric solid malignancies**

Andrew S. Brohl, Sivasish Sindiri, Jun S. Wei, David Milewski, Hsien-Chao Chou, Young K. Song, Xinyu Wen, Jeetendra Kumar, Hue V. Reardon, Uma S. Mudunuri, Jack R. Collins, Sushma Nagaraj, Vineela Gangalapudi, Manoj Tyagi, Yuelin J. Zhu, Katherine E. Masih, Marielle E. Yohe, Jack F. Shern, Yue Qi, Udayan Guha, Daniel Catchpoole, Rimas J. Orentas, Igor B. Kuznetsov, Nicolas J. Llosa, John A. Ligon, Brian K. Turpin, Daniel G. Leino, Shintaro Iwata, Irene L. Andrulis, Jay S. Wunder, Silvia R.C. Toledo, Paul S. Meltzer, Ching Lau, Beverly A. Teicher, Heather Magnan, Marc Ladanyi, and Javed Khan

*Cell Rep* . 2021 Nov 23;37(8):110047

<https://www.sciencedirect.com/science/article/pii/S221124721015333>

### **Atypical acute myeloid leukemia-specific transcripts generate shared and immunogenic MHC class-I-associated epitopes**

Grégory Ehx, Jean-David Larouche, Chantal Durette, Jean-Philippe Laverdure, Leslie Hesnard, Krystal Vincent, Marie-Pierre Hardy, Catherine Thériault, Caroline Rulleau, Joël Lanoix, Eric Bonneil, Albert Feghaly, Anca Apavaloaei, Nandita Noronha,

Céline M. Laumont, Jean-Sébastien Delisle, Luca Vago, Josée Hébert, Guy Sauvageau, Sébastien Lemieux, Pierre Thibault, and Claude Perreault

*Immunity* . 2021 Apr 13;54(4):737-752.e10

<https://www.sciencedirect.com/science/article/pii/S107476132100087X>

### **Most non-canonical proteins uniquely populate the proteome or immunopeptidome**

Maria Virginia Ruiz Cuevas, Marie-Pierre Hardy, Jaroslav Holý, Éric Bonneil, Chantal Durette, Mathieu Courcelles, Joël Lanoix, Caroline Côté, Louis M. Staudt, Sébastien Lemieux, Pierre Thibault, Claude Perreault, and Jonathan W. Yewdell

*Cell Rep* . 2021 Mar 9;34(10):108815

<https://www.sciencedirect.com/science/article/pii/S221124721001297>

### **CIITA-Transduced Glioblastoma Cells Uncover a Rich Repertoire of Clinically Relevant Tumor-Associated HLA-II Antigens**

Greta Forlani, Justine Michaux, HuiSong Pak, Florian Huber, Elodie Lauret Marie Joseph, Elise Ramia, Brian J. Stevenson, Michael Linnebacher, Roberto S. Accolla, Michal Bassani-Sternberg

*Mol Cell Proteomics* . 2021:20:100032

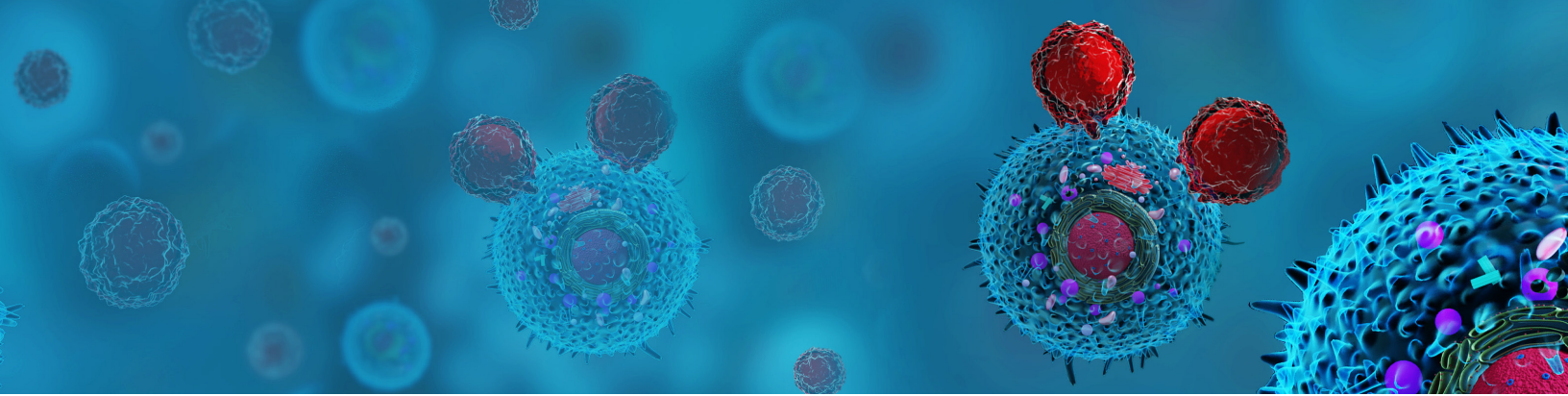
<https://www.sciencedirect.com/science/article/pii/S153594762035146X>

### **Estimating the Contribution of Proteasomal Spliced Peptides to the HLA-I Ligandome**

Roman Mylonas, Ilan Beer, Christian Iseli, Chloe Chong, Hui-Song Pak, David Gfeller, George Coukos, Ioannis Xenarios, Markus Müller, and Michal Bassani-Sternberg

*Mol Cell Proteomics* . 2018 Dec;17(12):2347-2357

<https://www.sciencedirect.com/science/article/pii/S153594762031999X>



### **High-throughput and Sensitive Immunopeptidomics Platform Reveals Profound Interferony-Mediated Remodeling of the Human Leukocyte Antigen (HLA) Ligandome**

Chloe Chong, Fabio Marino, HuiSong Pak, Julien Racle, Roy T. Daniel, Markus Müller, David Gfeller, George Coukos, and Michal Bassani-Sternberg

*Mol Cell Proteomics* . 2018 Mar;17(3):533-548

<https://www.sciencedirect.com/science/article/pii/S153594762032260X>

### **Allotype-Specific Glycosylation and Cellular Localization of Human Leukocyte Antigen Class I Proteins**

Max Hoek, Laura C. Demmers, Wei Wu, and Albert J. R. Heck

*J Proteome Res* . 2021 Sep 3;20(9):4518-4528

<https://pubs.acs.org/doi/10.1021/acs.jproteome.1c00466>

### **MAPDP: A Cloud-Based Computational Platform for Immunopeptidomics Analyses**

Mathieu Courcelles, Chantal Durette, Tariq Daouda, Jean-Philippe Laverdure, Krystel Vincent, Sébastien Lemieux, Claude Perreault, and Pierre Thibault

*J Proteome Res* . 2020 Apr 3;19(4):1873-1881

<https://pubs.acs.org/doi/10.1021/acs.jproteome.9b00859>

### **Comparison of the MHC I Immunopeptidome Repertoire of B-Cell Lymphoblasts Using Two Isolation Methods**

Joël Lanoix, Chantal Durette, Mathieu Courcelles, Émilie Cossette, Simon Comtois-Marotte, Marie-Pierre Hardy, Caroline Côté, Claude Perreault, and Pierre Thibault

*Proteomics* . 2018 Jun;18(12):e1700251

<https://analyticalsciencejournals.onlinelibrary.wiley.com/doi/abs/10.1002/pmic.201700251>

### **Mass Spectrometry Based Immunopeptidomics for the Discovery of Cancer Neoantigens**

Michal Bassani-Sternberg

*Methods Mol Biol* . 2018:1719:209-221

[https://link.springer.com/protocol/10.1007/978-1-4939-7537-2\\_14](https://link.springer.com/protocol/10.1007/978-1-4939-7537-2_14)

### **High-Throughput, Fast, and Sensitive Immunopeptidomics Sample Processing for Mass Spectrometry**

Fabio Marino, Chloe Chong, Justine Michaux, and Michal Bassani-Sternberg

*Methods Mol Biol* . 2019:1913:67-79

[https://link.springer.com/protocol/10.1007/978-1-4939-8979-9\\_5](https://link.springer.com/protocol/10.1007/978-1-4939-8979-9_5)

### **Deciphering HLA-I motifs across HLA peptidomes improves neo-antigen predictions and identifies allosteric regulating HLA specificity**

Michal Bassani-Sternberg, Chloé Chong, Philippe Guillaume, Marthe Solleder, HuiSong Pak, Philippe O. Gannon, Lana E. Kandalaf, George Coukos, and David Gfeller

*PLoS Comput Biol* . 2017 Aug 23;13(8):e1005725

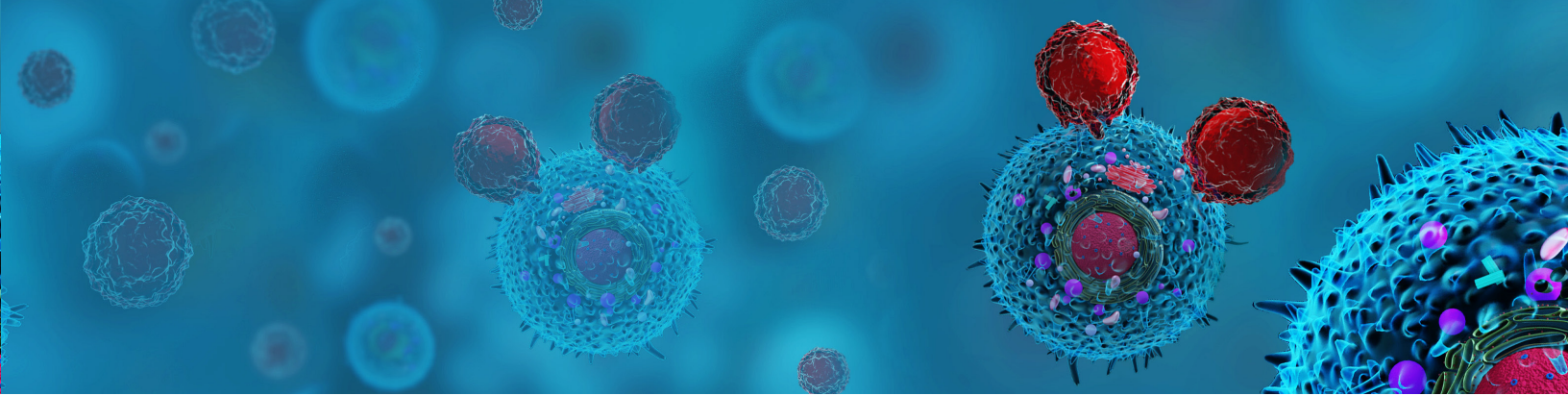
<https://journals.plos.org/ploscompbiol/article?id=10.1371/journal.pcbi.1005725>

### **Immunoprecipitation methods impact the peptide repertoire in immunopeptidomics**

Marcel Wacker, Jens Bauer, Laura Wessling, Marissa Dubbelaar, Annika Nelde, Hans-Georg Rammensee, and Juliane S Walz

*Front Immunol* . 2023 Jul 21;14:1219720

<https://www.frontiersin.org/journals/immunology/articles/10.3389/fimmu.2023.1219720/full>



### **Discrimination Between Human Leukocyte Antigen Class I-Bound and Co-Purified HIV-Derived Peptides in Immunopeptidomics Workflows**

Thomas Partridge, Annalisa Nicastrì, Anna E Kliszczak, Louis-Marie Yindom, Benedikt M Kessler, Nicola Ternette, and Persephone Borrow

*Front Immunol* . 2018 Apr 27;9:912

<https://www.frontiersin.org/journals/immunology/articles/10.3389/fimmu.2018.00912/full>

### **'Hotspots' of Antigen Presentation Revealed by Human Leukocyte Antigen Ligandomics for Neoantigen Prioritization**

Markus Müller, David Gfeller, George Coukos, and Michal Bassani-Sternberg

*Front Immunol* . 2017 Oct 20;8:1367

<https://www.frontiersin.org/journals/immunology/articles/10.3389/fimmu.2017.01367/full>

### **Biogenesis of HLA Ligand Presentation in Immune Cells Upon Activation Reveals Changes in Peptide Length Preference**

Fabio Marino, Aikaterini Semilietof, Justine Michaux, Hui-Song Pak, George Coukos, Markus Müller, and Michal Bassani-Sternberg

*Front Immunol* . 2020 Aug 28;11:1981

<https://www.frontiersin.org/journals/immunology/articles/10.3389/fimmu.2020.01981/full>

### **Mass spectrometry-driven exploration reveals nuances of neoepitope-driven tumor rejection**

Hakimeh Ebrahimi-Nik, Justine Michaux, William L. Corwin, Grant L.J. Keller, Tatiana Shcheglova, HuiSong Pak, George Coukos, Brian M. Baker, Ion I. Mandoiu, Michal Bassani-Sternberg, and Pramod K. Srivastava

*JCI Insight* . 2019 Jun 20;5(14):e129152

<https://insight.jci.org/articles/view/129152>

### **Alterations in HLA Class I-Presented Immunopeptidome and Class I-Interactome upon Osimertinib Resistance in EGFR Mutant Lung Adenocarcinoma**

Yue A Qi, Tapan K Maity, Shaojian Gao, Tao Gong, Meriam Bahta, Abhilash Venugopalan, Xu Zhang, and Udayan Guha

*Cancers (Basel)* . 2021 Oct 4;13(19):4977

<https://www.mdpi.com/2072-6694/13/19/4977>

### **Integral Use of Immunopeptidomics and Immunoinformatics for the Characterization of Antigen Presentation and Rational Identification of BoLA-DR-Presented Peptides and Epitopes**

Andressa Fisch, Birkir Reynisson, Lindert Benedictus, Annalisa Nicastrì, Deepali Vasoya, Ivan Morrison, Søren Buus, Beatriz Rossetti Ferreira, Isabel Kinney Ferreira de Miranda Santos, Nicola Ternette, Tim Connelley, and Morten Nielsen

*J Immunol* . 2021 May 15;206(10):2489-2497

<https://journals.aai.org/jimmunol/article/206/10/2489/234505>

### **Proteogenomics Uncovers a Vast Repertoire of Shared Tumor-Specific Antigens in Ovarian Cancer**

Qingchuan Zhao, Jean-Philippe Laverdure, Joël Lanoix, Chantal Durette, Caroline Côté, Éric Bonneil, Céline M Laumont, Patrick Gendron, Krystel Vincent, Mathieu Courcelles, Sébastien Lemieux, Douglas G Millar, Pamela S Ohashi, Pierre Thibault, and Claude Perreault

*Cancer Immunol Res* . 2020 Apr;8(4):544-555

<https://aacrjournals.org/cancerimmunolres/article/8/4/544/466989/Proteogenomics-Uncover-a-Vast-Repertoire-of>

### **The Length Distribution and Multiple Specificity of Naturally Presented HLA-I Ligands**

David Gfeller, Philippe Guillaume, Justine Michaux, Hui-Song Pak, Roy T Daniel, Julien Racle, George Coukos, and Michal Bassani-Sternberg

*J Immunol* . 2018 Dec 15;201(12):3705-3716

<https://journals.aai.org/jimmunol/article/201/12/3705/106932/The-Length-Distribution-and-Multiple-Specificity>

### **Deciphering and predicting CD4+ T cell immunodominance of influenza virus hemagglutinin**

Antonino Cassotta, Philipp Paparoditis, Roger Geiger, Ramgopal R Mettu, Samuel J Landry, Alessia Donati, Marco Benevento, Mathilde Foglierini, David J M Lewis, Antonio Lanzavecchia, and Federica Sallusto

*J Exp Med* . 2020 Oct 5;217(10):e20200206

<https://rupress.org/jem/article/217/10/e20200206/151933/Deciphering-and-predicting-CD4-T-cell>

Find out more at [thermofisher.com/immunoepitomics](https://thermofisher.com/immunoepitomics)