

Are you benefiting from Thermo Scientific Accucore Columns?



You trust Thermo Scientific™ liquid chromatography-mass spectrometry (LC-MS) systems. Have you tried Thermo Scientific™ Accucore™ Columns?



The high throughput nature of Pharmaceutical R&D analysis is relentless, and the challenge is compounded by the demand for high quality data. Thermo Fisher Scientific™ designs and manufactures innovative solutions to support you with your analysis.



Reproducibility

Injection-to-injection reproducibility ensures you can be confident in your data and reduces the potential for repeat analysis.



Longevity

Robust performance over thousands of injections equates to long column lifetimes, reducing cost and system set-up time.

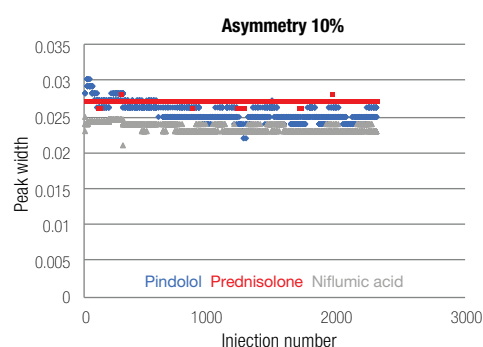
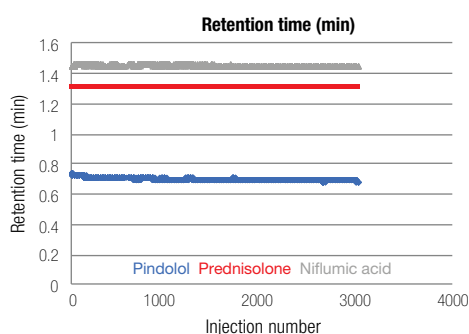


Online availability

Ordering columns via thermofisher.com/accucore is quick and convenient, ensuring you have the column you need as quickly as possible.

Accucore column performance

Customers rely upon our analytical columns to offer retention time and peak symmetry stability. Ballistic gradient methods can pose a challenge to column integrity. To demonstrate our stability, a 2.1 x 50 mm Accucore Biphenyl column shows outstanding stability separating an acidic, neutral, and basic component on a 3 min ballistic gradient.



Trusted

Scientists have published thousands of pharmaceutical methods in journal papers using Accucore columns. Here are quick links to view recent publications on Google Scholar:

[Thermo Scientific™ Accucore™ C18 columns](#)

[Thermo Scientific™ Accucore™ Biphenyl™ columns](#)

[Thermo Scientific™ Accucore™ Amide HILIC columns](#)

Thermo Fisher Scientific offers a breadth of column chemistries as well as a technical support team to help you reach your destination on your method development journey.

Method development options



[Accucore C18 columns](#)

[Accucore RP-MS HPLC columns](#)

The perfect place to start your method development. These columns comfortably separate the majority of pharmaceutical analytes and are robust enough to cope with the demand of a high throughput laboratory.



[Accucore Biphenyl columns](#)

If you are struggling to separate your isobaric compounds with C18, turn to Accucore Biphenyl columns. Aromatic compounds separate by pi-pi interactions, offering a complementary separation technique to hydrophobicity.



[Accucore Amide HILIC columns](#)

Very polar compounds do not retain well by traditional reversed-phase chromatography. The Accucore Amide HILIC column offers excellent separation and retention of highly polar compounds.

Find out more at thermofisher.com/accucore