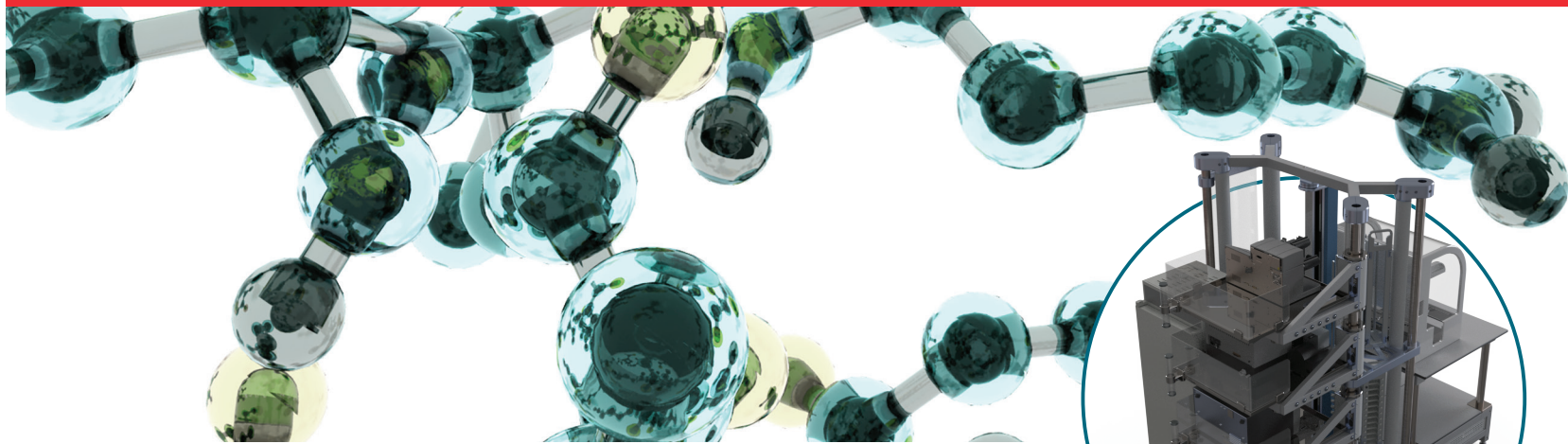


thermo scientific



## Science **inSPIREd**

Thermo Scientific™ inSPIRE™ - an intuitive, easy to use space-saving vertically oriented modular integrated system.



**ThermoFisher**  
SCIENTIFIC

# inSPIRE - exploring a new approach to vertical integration



---

**Tight footprint**

---

**Flexible, configurable shelves**

---

**Simple visual instrument usage monitoring**

---

**Easy walk-up control with instrument docking**

---

**Compatible with docking carts**

---

**Thermo Scientific™ Momentum™ workflows**

---

# ELISA Assays (direct, indirect, sandwich, competitive, multiplex)

## Workflow

- Samples pre-arrayed in plates offline to system
- Plates start/end in random access storage
- MultiFlo's dispense 1° & 2° antibodies & stop solutions
- Dual ELx405's for washing
- Plate read in Epoch

## Core instruments:

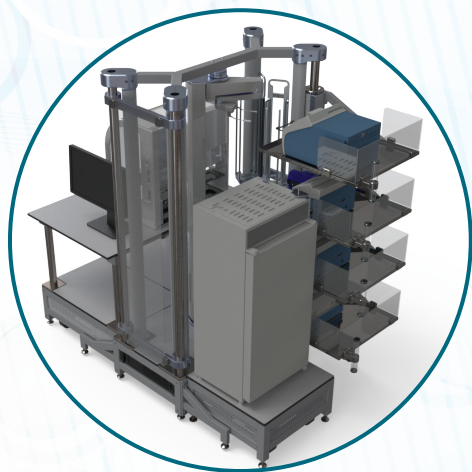
- BioTek ELx405 Washer x2
- BioTek MultiFlo Dispenser x2
- BioTek Epoch Reader
- 30 Random Access Hotel Nests
- 2 Sequential Access Stackers (40 mtp capacity)

## Optional Instruments (capture more workflow):

- 5 or 8 Position Carousel
- Thermo Scientific™ Cytomat 2C or 10C Incubator
- Thermo Scientific™ Teleshake(s)
- CyBio® FeliX Pipettor



# Shaking ELISA Assays with Plate Preparation



## Workflow

- Dual WellWash Versa for washing
- FeliX arrays samples & dispenses 1° & 2° antibodies
- Combi nL dispenses stop solution
- Shaking Cytomat 2C for incubation
- Plate read in Multiskan GO

## Core instruments:

- Thermo Scientific™ WellWash Versa x2 Washer
- Thermo Scientific™ Combi nL Dispenser
- Thermo Scientific™ Cytomat 2C Shaking
- Thermo Scientific™ Multiskan™ GO Reader
- CyBio® FeliX Pipettor
- 30 Random Access Hotel Nests
- 2 Sequential Access Stackers (40 mtp capacity)

## Optional Instruments (capture more workflow):

- 5 or 8 Position Carousel
- Thermo Scientific™ Cytomat 2C or 10C incubator

# Nucleic Acid Extraction

## Workflow

- System capable of arraying samples in plates
- FeliX pipettes samples & beads
- Combi dispenses extraction reagents
- Presto for extraction
- Cytomat 2C for samples & extractions
- ALPS seals plates containing extracted sample

## Core instruments:

- Thermo Scientific™ Kingfisher™ Presto
- Thermo Scientific™ Multidrop Combi with multiway valve Dispenser
- Thermo Scientific™ Cytomat 2C Incubator
- Thermo Scientific™ ALPS 3000™ Microplate Sealer
- CyBio® FeliX Pipettor
- Waste Station
- 15 Random Access Hotel Nests
- 3 Sequential Access Stackers (deep well block storage)

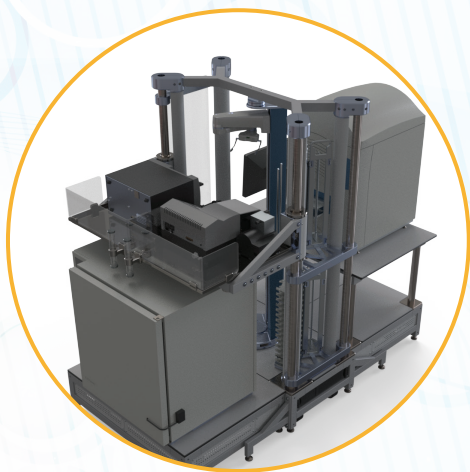
## Optional Instruments (capture more workflow):

- 5 or 8 Position Carousel





# Screening Platform



## Workflow

- Cells/Screening plates start in Cytomat
- Compound plates loaded in ambient storage
- LabCyte dispenses compounds
- Synergy HTX reads plate

## Core instruments:

- BioTek ELx405 Washer
- BioTek Synergy HTX Reader
- Thermo Scientific™ Cytomat 10 Incubator
- LabCyte Echo® Acoustic Dispenser
- 15 Random Access Hotel Nests
- 3 Sequential Access Stackers (deep well block storage)

## Optional Instruments (capture more workflow):

- CyBio® FeliX Pipettor
- 5 or 8 Position Carousel

# ADME-Tox

## Workflow

- Cytochrome P450 panel screening & multiplexed assays for cell viability and apoptosis
- MultiFlo dispenses reagents
- FeliX transfers compounds into assay plates
- Read plates in Synergy HTX multimode reader

## Core instruments:

- BioTek ELx405 Washer
- BioTek MultiFlo Dispenser
- BioTek Synergy HTX Reader
- Thermo Scientific™ Cytomat 2C Incubator
- Cybio® FeliX Pipettor
- Waste station
- 30 Random Access Hotel Nests
- 2 Sequential Access Stackers (~40 mtp storage)

## Optional Instruments (capture more workflow):

- 5 or 8 Position Carousel
- Agilent Microplate Centrifuge



# Bulk Plasmid Extraction



## Workflow

- Bulk plasmid extraction station leverages KingFisher Presto for extraction
- MultiFlo dispenses all extraction reagents
- ALPS seals plates containing extracted sample

## Core instruments:

- Thermo Scientific™ Kingfisher™ Presto x2
- BioTek MultiFlow Dispenser
- Thermo Scientific™ ALPS 3000™ Microplate Sealer
- 5 Position Carousel
- Waste Station
- 2 Random Access Hotels
- 2 Sequential Access Stackers (deep well block storage)



# siRNA Screening

## Workflow

- Either quantitative expression measurement by qpcr or multimode reader
- CyBio FeliX used to prepare RNAi plates - reagent addition, basic washes, etc
- Cytomat for plate incubation/storage

## Core instruments:

- ABI QuantStudio™ 7 real-time PCR
- BioTek Synergy HTS Reader
- Thermo Scientific™ ALPS 3000™ Microplate Sealer
- CyBio® FeliX Pipettor
- Thermo Scientific™ Cytomat 2C Incubator
- 1 Random Access Hotel
- 3 Sequential Access Stackers (deep well block storage)

## Optional instruments:

- Thermo Scientific™ CellInsight™CX5 HCS imager



# Assay Ready Plate Preparation Workstation



## Workflow

- Compound plates start/end in ambient storage, spun down in centrifuge, then de-sealed and loaded into acoustic dispenser
- Destination plates start/end in stackers
- Bulk reagent added to destination plates & loaded to acoustic dispenser
- Compound transfer then both plates sealed & returned to storage

## Core instruments:

- BioTek MultiFlo
- Agilent Microplate Centrifuge
- Brooks XPeel® De-sealer
- Thermo Scientific™ ALPS 3000™ Microplate Sealer
- LabCyte Echo® Acoustic Dispenser
- 5 Random Access Hotel
- 3 Sequential Access Stackers

# MALDI-TOF Screening System

## Workflow

- MALDI-TOF detects biomolecules of interest without need for sample prep or expensive labels
- High throughput mass spectrometry system
- FeliX spots samples on plate & plates are read in MALDI-TOF

## Core instruments:

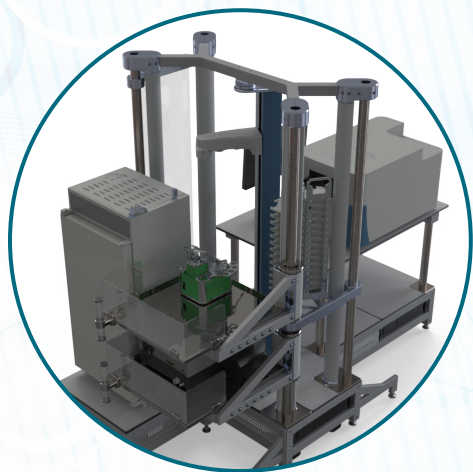
- Bruker rapifleX MALDI Pharma Pulse®
- Cybio FeliX Pipettor
- 2 Random Access Hotel
- 2 Sequential Access Stackers (deep well block storage)

## Optional Instruments:

- LabCyte Echo® Acoustic Dispenser
- TTP Labtech mosquito® Pipettor



# High Content Screening System



## Workflow

- Basic HCS system that incorporates addition of treatment of cells for imaging
- Thermo Scientific™ Cytomat™ for plate incubation/storage

## Core instruments:

- Thermo Scientific™ CellInsight™ CX5 HCS Imager
- BioTek ELx405 Washer
- Formulatrix® MANTIS® Dispenser
- Thermo Scientific™ Cytomat™ 2C Incubator
- 2 Random Access Hotel
- 2 Sequential Access Stackers (deep well block storage)

For further information email us at  
[info.labautomation@thermofisher.com](mailto:info.labautomation@thermofisher.com)

© 2018 Thermo Fisher Scientific Inc. All rights reserved. All trademarks are the property of Thermo Fisher Scientific and its subsidiaries unless otherwise specified. HAOUT-LA-inSPIR-0118

**ThermoFisher**  
SCIENTIFIC