

# Thermo Scientific™ Lab Execution System™ / Procedural ELN

SampleManager LIMS Delivers a Complete Informatics Solution for Method Execution, Laboratory and Data Management

**Thermo Scientific™ SampleManager™ LIMS is continuously upgraded to meet the changing needs of industrial and life sciences laboratories. SampleManager delivers:**

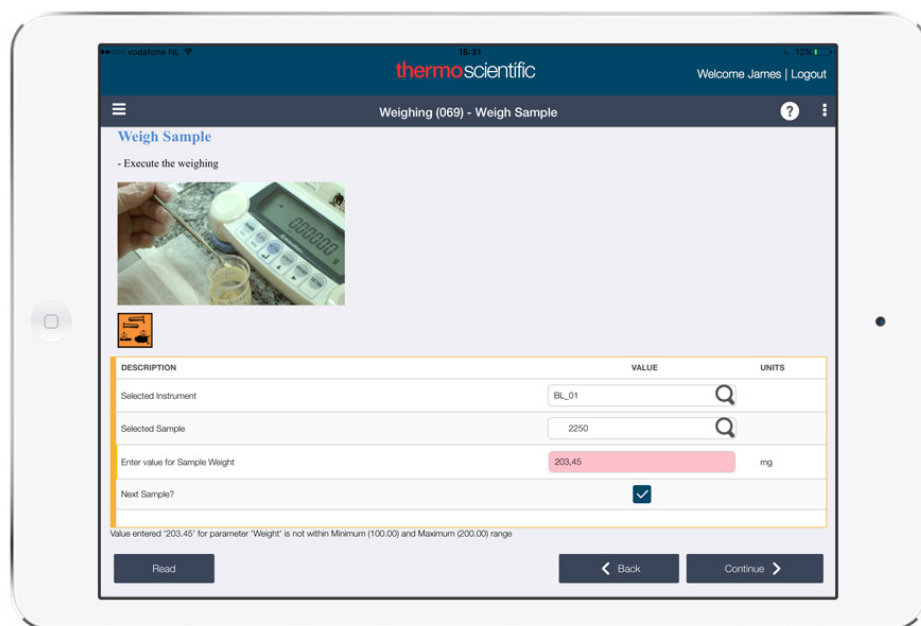
- Lab Method Execution
- Full SampleManager Integration
- “Remote” Instrument Integration
- Workflow Design
- Dashboards

Addressing the increasing pressures to improve time to market and realize cost savings in QA/QC and analytical labs, Thermo Scientific Lab Execution System (LES/Procedural ELN) gives lab managers complete control to manage their methods and SOPs, without the need to purchase, integrate and validate additional software from multiple vendors.

LES/Procedural ELN is fully integrated with Thermo Scientific SampleManager LIMS, using the available Workflow Designer and executable from the SampleManager Client or the SampleManager Mobile App. Combined with instrument integration for real-time data acquisition and the raw data storage and retrieval capabilities of the company's SDMS (Thermo Scientific™ Data Manager™), LES/Procedural ELN expands the growing platform offered by Thermo Fisher Scientific, and offers customers the most comprehensive paperless lab solution available today.



**With SampleManager's Mobile App, you can easily execute lab methods or resume running lab executions. With the use of remote Instrument Interfacing and Barcode scanning, the execution of your process will improve your laboratory efficiency.**

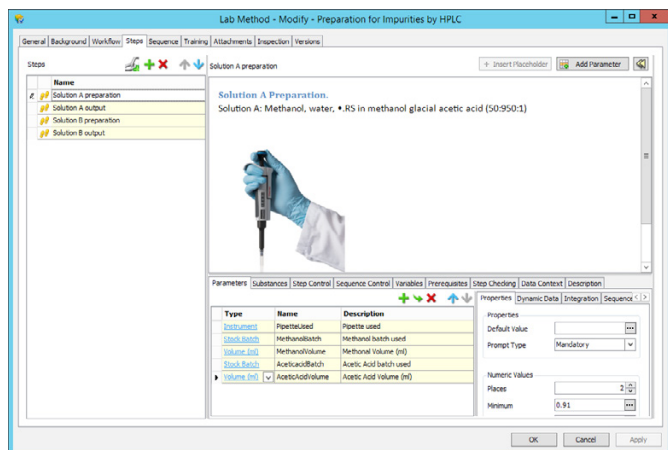


Find out more at [thermofisher.com/LIMS](http://thermofisher.com/LIMS)

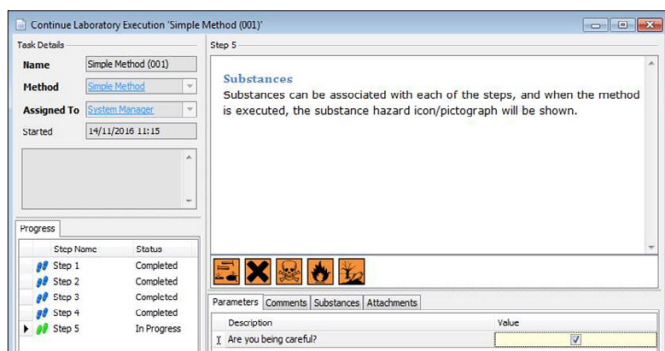
**ThermoFisher**  
SCIENTIFIC

The integration of LES/Procedural ELN makes use of the already powerful tools within SampleManager such as the Forms, Workflow and Report Designer. By using these feature-rich capabilities, lab managers and scientists across all industries will be able to achieve full instrument integration, manage their Lab Methods and Workflows, retrieve, link and archive scientific data in any format, and export those results in the format required by the recipient.

SOPs can be broken down into multiple Lab Methods comprising logical steps to guide analysts through a procedure.



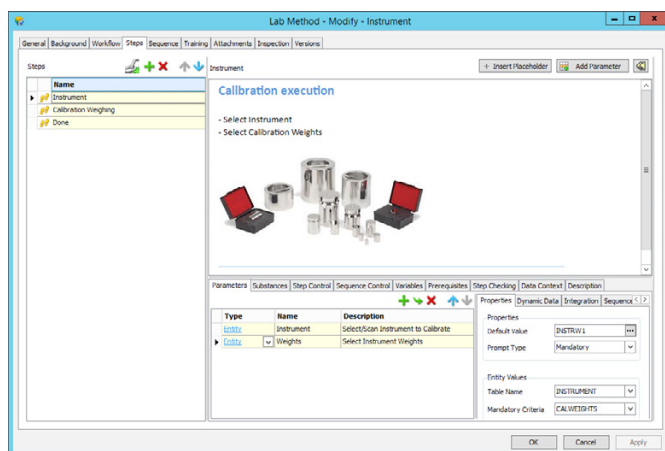
Hazard warnings embedded into the lab method remind analysts of necessary safety procedures.



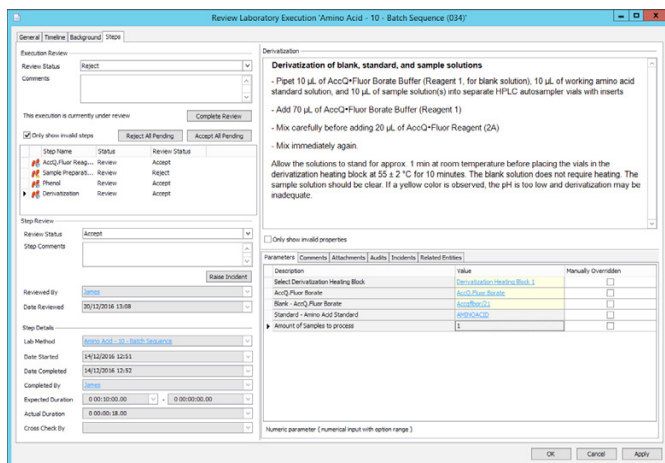
Process history provides an overview of all executed steps and their status.

Progress		
	Step Name	Status
	Batch Sequence	Completed
	AccQ.Fluor Reagent	Review
	Amino Acid Standard	Completed
	Sample Preparation for: 2240	Review
	Constant-boiling HCl	Completed
	Phenol	Review
▶	Derivatization Prep	In Progress

Instructions and illustrations demonstrate proper analytical techniques.



Review by exception lowers the amount of time spent in review.



Find out more at [thermofisher.com/LIMS](http://thermofisher.com/LIMS)

**Australia/Asia Pacific** +61 8 8208 8200  
**China** +86 800 810 5118  
**France** +33 160924800  
**Germany/Eastern Europe**  
 +49 6103 408 1110  
**India** +91 22 6742 94 94

**Latin America and the Caribbean**  
 +1 781 933 4689  
**Netherlands/Benelux** +31 76 579 5555  
**Spain/Portugal** +34 914 845 965  
**United Kingdom** +44 1619423000  
**USA/North America** +1 800 395 5467

**ThermoFisher**  
 SCIENTIFIC

©2017 Thermo Fisher Scientific Inc. All rights reserved. All trademarks are the property of Thermo Fisher Scientific Inc. and its subsidiaries unless otherwise specified. This information is presented as an example of the capabilities of Thermo Fisher Scientific Inc. products. It is not intended to encourage use of these products in any manners that might infringe the intellectual property rights of others. Specifications, terms and pricing are subject to change. Not all products are available in all countries. Please consult your local sales representative for details.

PS80005-EN 03175