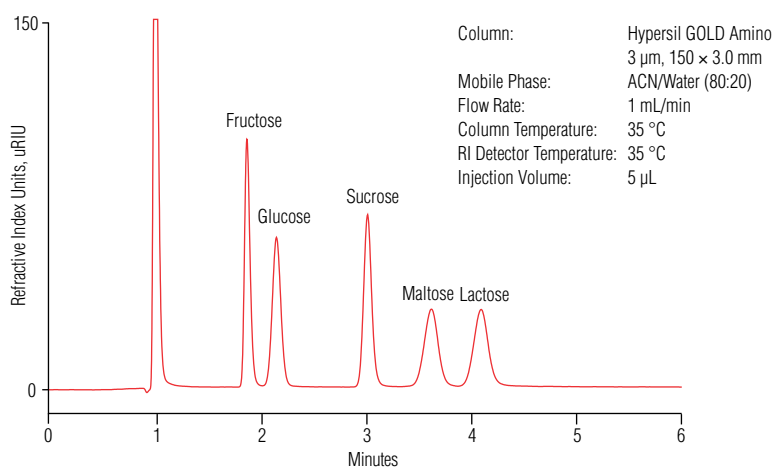


RefractoMax 521

Refractive Index Detector

Thermo Scientific offers the RefractoMax 521 Refractive Index Detector from ERC Inc. This detector, in combination with the Thermo Scientific™ Dionex™ UltiMate™ 3000 system, is the right choice for the isocratic analysis of sugars, polymers, and fatty acids. It features fast baseline stabilization and excellent reproducibility, combined with high sensitivity. The RefractoMax 521 is fully controlled by the Thermo Scientific™ Dionex™ Chromeleon™ Chromatography Data System, and can also operate in stand-alone mode.



Separation of five sugars on a Thermo Scientific™ Hypersil GOLD™ Amino column.

Features

- The detector is highly sensitive and applicable universally. It provides very stable baselines with a drift of 0.2 μRIU/h and a noise specification of 2.5 nRIU or less.
- The optical bench, thermostatically regulated from 30 °C to 55 °C, and the superior signal-to-noise ratio ensure highly precise measurement results.
- The extended flow rate range from 1 mL/min up to 10 mL/min and the operating range of 1.00 to 1.75 RIU enable the use of this detector for a wide range of applications.
- Applications include the analysis of all compounds with low UV-Vis activity, such as alcohols, mono- and polysaccharides, esters, fatty acids, or polymers.
- An Auto Set-up function automates purging, equilibration, autozero, and the control of baseline stability and noise.
- Operating with Chromeleon 6.80 or 7.1 software makes the detector easy to use and ensures maximum productivity in instrument control, data processing, and reporting of results.



REFRACTOMAX 521 SPECIFICATIONS

Measuring Method	Deflection type
Refractive Index Range	1.00–1.75 RIU
Measuring Range	0.25–512 μ RIU
Linearity Range	600 μ RIU
Noise	\leq 2.5 nRIU (response 1.5 s)
Drift	0.2 μ RIU/h
Response Time	0.1, 0.25, 0.5, 1, 1.5, 2, 3, 6 sec
Polarity	Positive/Negative
AutoZero	Optical and electrical auto zero
AutoZero Resolution	\leq 1 (@ 8 mV/ μ RIU)/4 (@ 2 mV/ μ RIU) nRIU
Offset Range	0 mV to 500 mV
Integrator Output (Sensitivity)	DC 0 V to 1 V (2 mV/ μ RIU, 8 mV/ μ RIU)
Recorder Output	0 mV/FS to 10 mV/FS
Event Marker	Marker out: \geq 5 % of FS
Temperature Control	30 °C to 55 °C: 80 °C Thermal protector
External Communication	RS-232C; RS-232-to-USB interface cable is included in shipment
External Output	(1) READY, (2) LEAK, (3) ERROR (OVER HEAT/LOW LIGHT INTENSITY/NULL GLASS HOME POSITION/LOST PARAMETERS/OPTICAL BALANCE) (contact capacity: DC24V 0.1A max.)
Flow Cell Type	2 Chambers
Flow Cell Volume	8 μ L
Maximum Flow Rate	10 mL/min (with water)
Pressure Rating	50 kPa (0.5 bar, 7 psi)
Internal Volume	Inlet port/flow cell: approx. 60 μ L; Flow cell/outlet port: approx. 480 μ L; Total: 540 μ L
Wetted Materials	SUS 316, PTFE, Quartz glass
Power Requirements	AC 100 V to 240 V +/- 10 %, 50 Hz/60 Hz, 120 VA max.
Dimensions	H 150 x W 260 x D 450 (mm)
Weight	12 kg

Ordering Information

To order in the U.S., call (800) 346-6390 or contact the Thermo Scientific office nearest you. Outside the U.S., order through your local Thermo Scientific office or distributor. Refer to the following part numbers.

Description	Part Number
RefractMax 521 Refractive Index Detector	5060.0050

www.thermofisher.com/dionex

©2016 Thermo Fisher Scientific Inc. All rights reserved. ERC is a trademark of IDEX Corporation All other trademarks are the property of Thermo Fisher Scientific Inc. and its subsidiaries. This information is presented as an example of the capabilities of Thermo Fisher Scientific Inc. products. It is not intended to encourage use of these products in any manner that might infringe the intellectual property rights of others. Specifications, terms and pricing are subject to change. Not all products are available in all countries. Please consult your local sales representative for details.

Africa +43 1 333 50 34 0
Australia +61 3 9757 4300
Austria +43 810 282 206
Belgium +32 53 73 42 41
Brazil +55 11 3731 5140
Canada +1 800 530 8447
China 800 810 5118 (free call domestic)
 400 650 09/16

Denmark +45 70 23 62 60
Europe Other +43 1 333 50 34 0
Finland +358 9 3291 0200
France +33 1 60 92 48 00
Germany +49 6103 408 1014
India +91 22 6742 9494
Italy +39 02 950 591

Japan +81 6 6885 1213
Korea +82 2 3420 8600
Latin America +1 561 688 8700
Middle East +43 1 333 50 34 0
Netherlands +31 76 579 55 55
New Zealand +64 9 980 6700
Norway +46 8 556 468 00

Russia/CIS +43 1 333 50 34 0
Singapore +65 6289 1190
Sweden +46 8 556 468 00
Switzerland +41 61 716 77 00
Taiwan +886 2 8751 6655
UK/Ireland +44 1442 233555
USA +1 800 532 4752

Thermo
 SCIENTIFIC

Part of Thermo Fisher Scientific