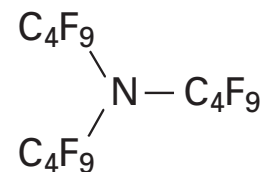


Perfluorotributyl amine (PFTBA, FC43)

Positive Ions

Reference Tables



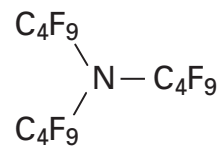
FORMULA	EXACT MASS [u]	REL. INTENSITY [%]	FORMULA	EXACT MASS [u]	REL. INTENSITY [%]
He ⁺	4.002055	100	C ₅ F ₉ ⁺	230.985080	1.08
CH ₂ ⁺	14.015101	0.01	C ₆ F ₉ ⁺	242.985080	0.01
H ₂ O ⁺	18.010016	1.00	C ₅ NF ₁₀ ⁺	263.986557	37.57
N ₂ ⁺	28.005599	1.00	C ₆ NF ₁₀ ⁺	275.986557	0.20
CF ⁺	30.997855	0.19	C ₆ F ₁₁ ⁺	280.981887	0.10
O ₂ ⁺	31.989281	0.25	C ₆ NF ₁₁ ⁺	294.984961	0.20
Ar ⁺	39.961835	0.10	C ₆ NF ₁₂ ⁺	313.983364	2.69
CO ₂ ⁺	43.989281	1.00	C ₇ NF ₁₂ ⁺	325.983364	0.25
CF ₂ ⁺	49.996258	3.00	C ₇ NF ₁₃ ⁺	344.981767	0.01
CF ₃ ⁺	68.994661	50.68	C ₆ NF ₁₄ ⁺	351.980170	1.69
C ₂ NF ₂ ⁺	75.999332	1.00	C ₇ NF ₁₄ ⁺	363.980170	1.01
C ₂ F ₃ ⁺	80.994661	1.20	C ₈ NF ₁₄ ⁺	375.980170	1.22
C ₃ F ₃ ⁺	92.994661	1.04	C ₇ NF ₁₆ ⁺	401.976977	2.00
C ₂ F ₄ ⁺	99.993064	3.91	C ₈ NF ₁₆ ⁺	413.976977	10.77
C ₂ NF ₄ ⁺	113.996138	3.52	C ₉ NF ₁₆ ⁺	425.976977	4.01
C ₂ F ₅ ⁺	118.991467	5.85	C ₈ NF ₁₈ ⁺	451.973783	0.60
C ₃ F ₅ ⁺	130.991467	49.77	C ₉ NF ₁₈ ⁺	463.973783	7.31
C ₃ F ₆ ⁺	149.989871	2.11	C ₁₀ NF ₁₈ ⁺	475.973783	0.01
C ₃ F ₇ ⁺	168.988274	5.14	C ₉ NF ₂₀ ⁺	501.970589	22.66
C ₄ NF ₆ ⁺	175.992945	1.31	C ₁₀ NF ₂₀ ⁺	513.970589	0.08
C ₄ F ₇ ⁺	180.988274	1.29	C ₁₁ NF ₂₀ ⁺	525.970589	0.07
C ₄ F ₈ ⁺	199.986677	0.20	C ₁₀ NF ₂₂ ⁺	551.967396	0.02
C ₄ NF ₈ ⁺	213.989751	2.46	C ₁₁ NF ₂₂ ⁺	563.967396	0.09
C ₄ F ₉ ⁺	218.985080	100.00	C ₁₂ NF ₂₂ ⁺	575.967396	1.25
C ₅ NF ₈ ⁺	225.989751	1.43	C ₁₂ NF ₂₄ ⁺	613.964202	3.59

The calculated reference masses are based on the following values for isotopic masses: ¹H 1.0078250321u, ⁴He 4.0026032497u, ¹²C 12.0000000000u, ¹⁴N 14.0030740052u, ¹⁶O 15.9949146221u, ¹⁹F 18.9984032000u, and ⁴⁰Ar 39.9623831230u. The mass of the electron (0.000548579911u) was taken into account for the calculation of the ionic masses. Reference: Nuclear Phys. A 1995, 595, 409-480; J. Phys. Chem. Ref. Data 1999, 28 (6), 1713-1852 and references cited therein.

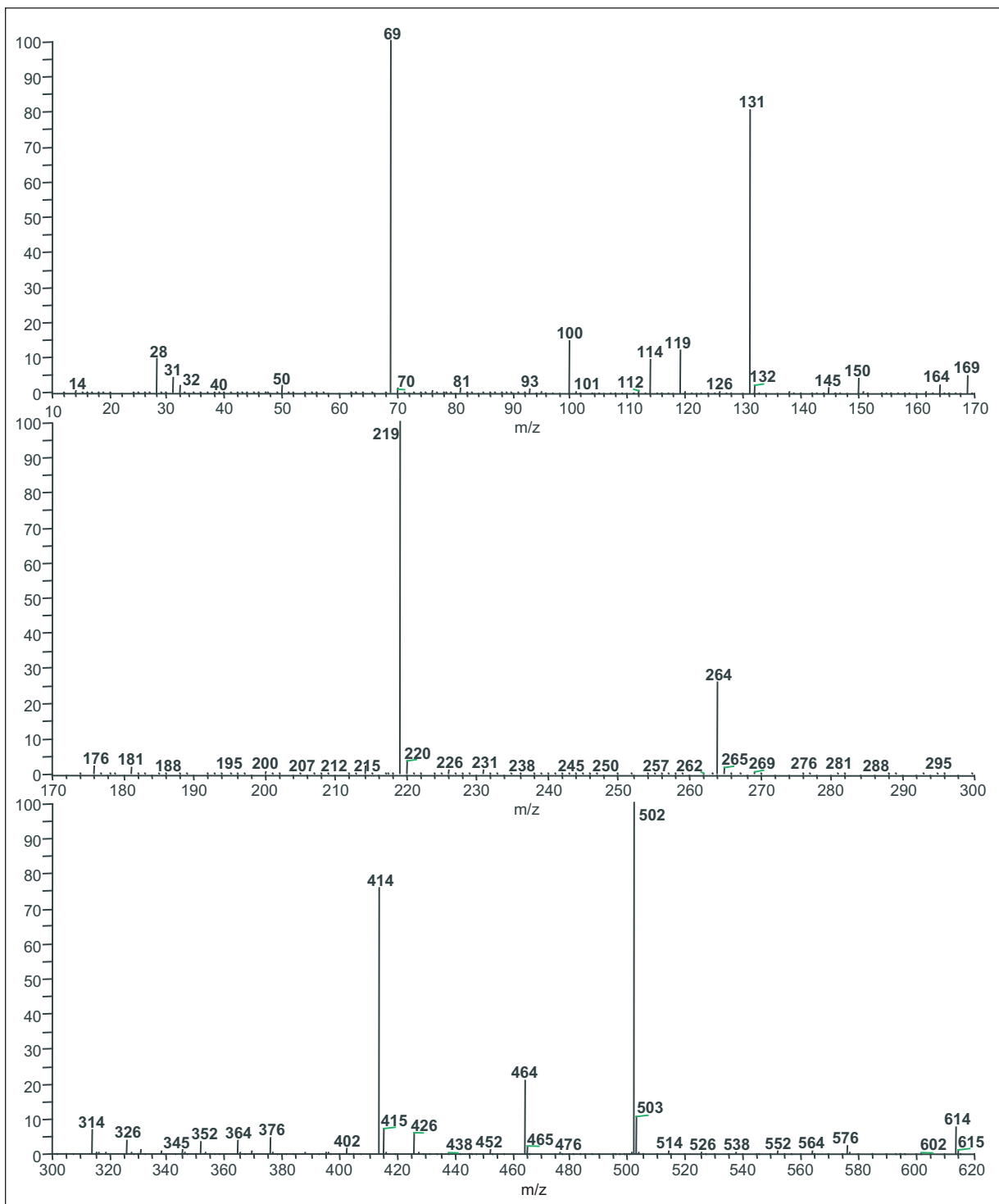
Perfluorotributyl amine (PFTBA, FC43)

Positive Ions

Reference Tables



In addition to these offices, Thermo Fisher Scientific maintains a network of representative organizations throughout the world.



©2009 Thermo Fisher Scientific Inc. All rights reserved. All trademarks are the property of Thermo Fisher Scientific Inc. and its subsidiaries. Specifications, terms and pricing are subject to change. Not all products are available in all countries. Please consult your local sales representative for details.

- Africa-Other**
+27 11 570 1840
- Australia**
+61 2 8844 9500
- Austria**
+43 1 333 50 34 0
- Belgium**
+32 2 482 30 30
- Canada**
+1 800 530 8447
- China**
+86 10 8419 3588
- Denmark**
+45 70 23 62 60
- Europe-Other**
+43 1 333 50 34 0
- Finland/Norway/Sweden**
+46 8 556 468 00
- France**
+33 1 60 92 48 00
- Germany**
+49 6103 408 1014
- India**
+91 22 6742 9434
- Italy**
+39 02 950 591
- Japan**
+81 45 453 9100
- Latin America**
+1 608 276 5659
- Middle East**
+43 1 333 50 34 0
- Netherlands**
+31 76 579 55 55
- South Africa**
+27 11 570 1840
- Spain**
+34 914 845 965
- Switzerland**
+41 61 716 77 00
- UK**
+44 1442 233555
- USA**
+1 800 532 4752

www.thermo.com



Thermo Fisher Scientific
(Bremen) GmbH
Management System
Registered to ISO 9001:2008

PS30040_E 07/09C