



# Higher Quality Data in Less Time using HPIC

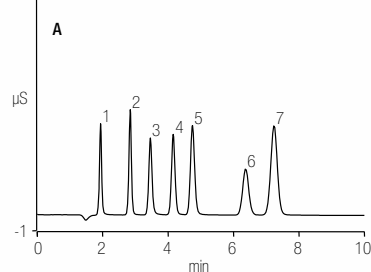
Analytical labs require more information in less time

- Quicker turnaround of sample results
- High-throughput applications
- Fast process monitoring to increase yield and improve troubleshooting
- Selectivity to baseline-resolve components of interest

How does high-pressure IC help your lab?

- Enables the use of smaller-particle-size resins
- HPIC systems support higher operating pressures
- Achieves faster runs without sacrificing resolution

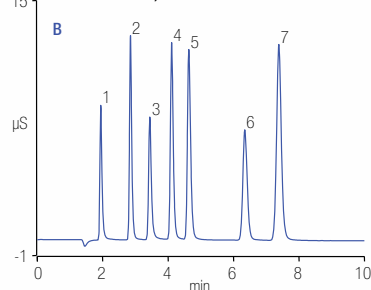
**Thermo Scientific™ Dionex™ IonPac™ AS22-Fast (2 x 150 mm) Column, Flow Rate: 0.3 mL/min**



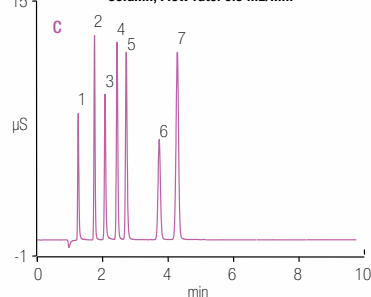
Eluent: 4.5 mM Na<sub>2</sub>CO<sub>3</sub> / 1.4 mM NaHCO<sub>3</sub>  
 Inj. Volume: 2.5 μL

Peaks:	mg/L (ppm)
1. Fluoride	5.0
2. Chloride	10.0
3. Nitrite	15.0
4. Bromide	25.0
5. Nitrate	25.0
6. Phosphate	40.0
7. Sulfate	30.0

**Dionex IonPac AS22-Fast-4μm (2 x 150 mm) Column, Flow rate: 0.3 mL/min**



**Dionex IonPac AS22-Fast-4μm (2 x 150 mm) Column, Flow rate: 0.5 mL/min**



Thermo Scientific™ Dionex™ Integrion™ HPIC™ System



Thermo Scientific™ Dionex™ ICS-4000 Integrated Capillary HPIC™ System



Thermo Scientific™ Dionex™ ICS-5000™ Capillary HPIC™ System

For more information, visit [thermoscientific.com](http://thermoscientific.com)

©2016 Thermo Fisher Scientific Inc. All rights reserved. All trademarks are the property of Thermo Fisher Scientific Inc. and its subsidiaries.

Specifications, terms and pricing are subject to change. Not all products are available in all countries. Please consult your local sales representative for details. FL71895 EN 0116S

**Thermo**  
SCIENTIFIC

A Thermo Fisher Scientific Brand