

# SmartLink: Simplified data evaluation

Often when evaluating data, the analyst is presented with too much, or more commonly, insufficient on-screen data to effectively review and process samples. This results in time consuming opening and closing of data files, metadata and associated reports. By linking the on-screen panes to the chromatogram and/or the selected injections, Thermo Scientific™ Chromeleon™ Chromatography Data System (CDS) provides all the relevant information for processing data, delivering faster and simplified data analysis.

One mouse click activates the SmartLink and immediately all active panes reflect the currently displayed/selected peaks in the chromatogram and overlaid injections. As the zoom, overlaid injections or selected components are changed, the panes automatically update to the new settings. This linking ensures that the analyst always has all the relevant information displayed.

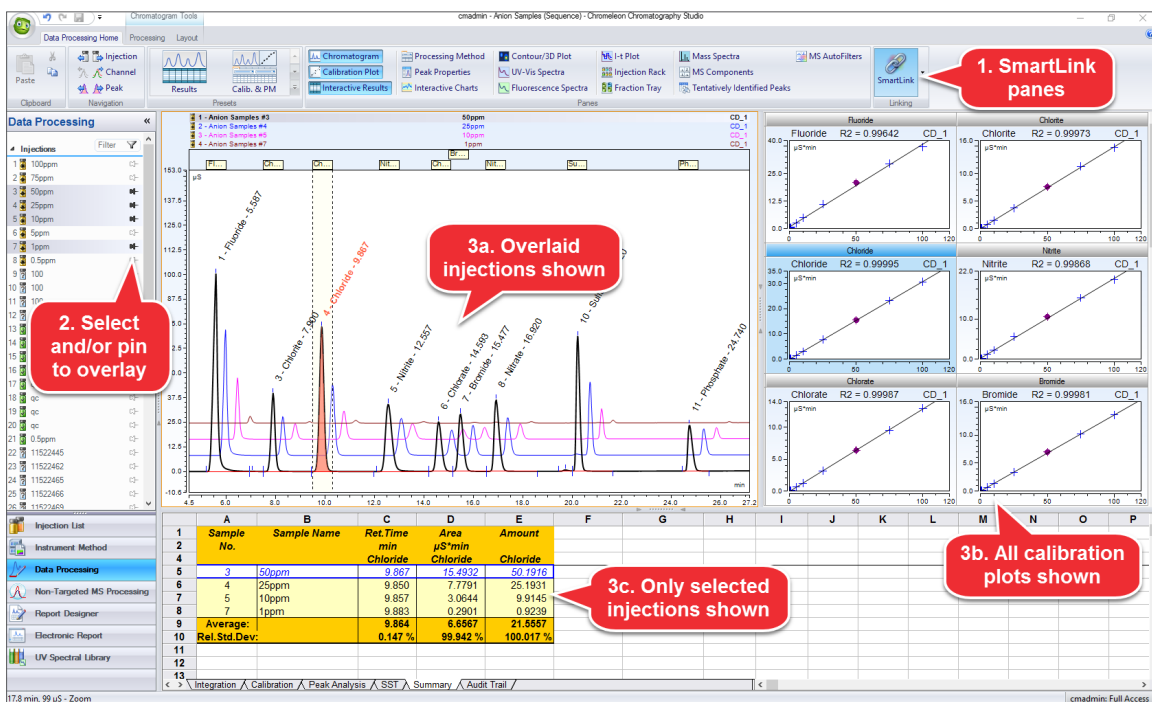


Figure 1. Selecting multiple injections limits the report summary table to only those injections



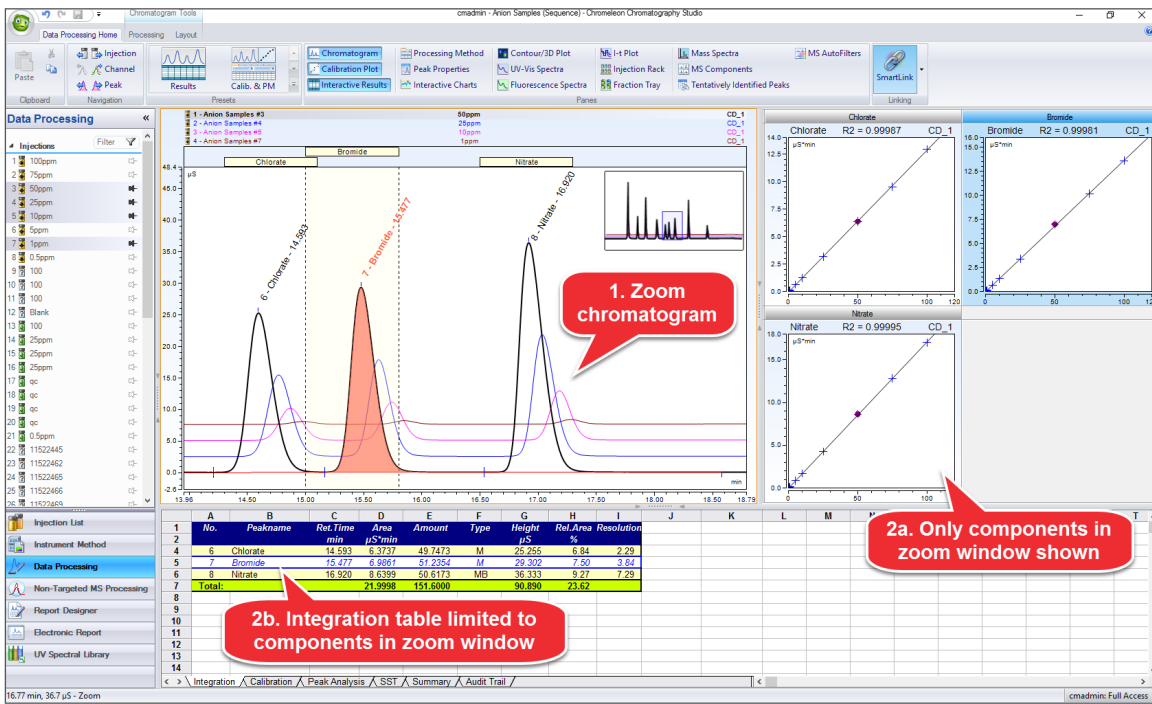


Figure 2. Zooming the chromatogram limits the calibration plots and integration table to only the visible components

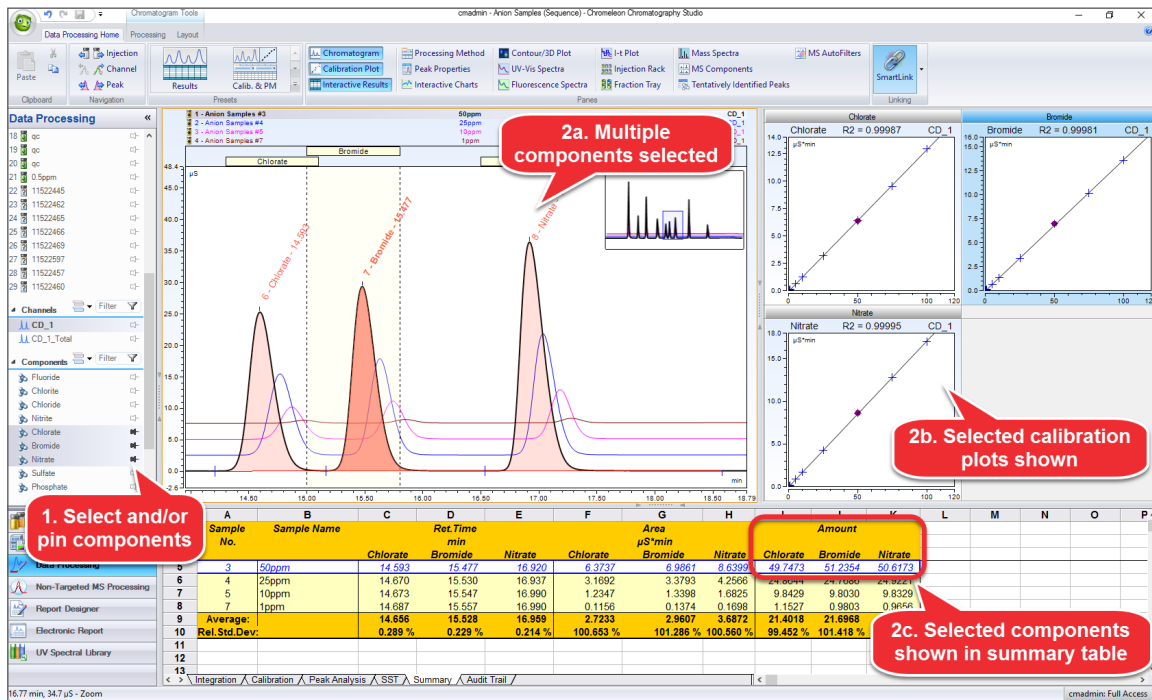


Figure 3. Selecting multiple components shows the calibration plots, limits the integration table, and automatically updates the summary table to show only those components

SmartLink is also active in the report designer where different tables and plots can be linked to specific chromatogram plots to create customized, dynamic tables displaying only the relevant information to be reported.

The screenshot displays the 'Report Designer' interface. At the top, a ribbon contains various toolbars, including 'SmartLink'. A red callout box labeled '1. Activate SmartLink' points to the SmartLink icon. Below the ribbon, a table titled 'Calibration' is shown with columns for 'Calibration Type', 'Evaluation Type', 'Number of Calibration Points', and 'Number of disabled Calibration Points'. To the right of the table, a dialog box titled 'Select chromatogram plot to link with' is open, listing several options. A red callout box labeled '2. Select 'link to' chromatogram' points to the 'Interactive Chromatogram' option. Below the dialog box, a red callout box labeled '3. Calibration Plot is linked to selected chromatogram' points to the 'Calibration Plot' section of the report, which contains three plots: Chlorate, Bromide, and Nitrate. The 'Calibration Results' table at the bottom shows data for these three analytes.

No.	Injection Name	Calibration Level	X Value	Y Value	Y Value	Area	Height
37	CD_1	CD_1	Chlorate	CD_1	Chlorate	CD_1	Chlorate
38	CD_1	Chlorate	Chlorate	Chlorate	Chlorate	Chlorate	Chlorate
39	CD_1	Chlorate	Chlorate	Chlorate	Chlorate	Chlorate	Chlorate
40	CD_1	Chlorate	Chlorate	Chlorate	Chlorate	Chlorate	Chlorate

Figure 4. Report elements including plots, tables and charts can be linked. Highlight the element (in this case a calibration plot), activate SmartLink, and select the chromatogram to link to from the dialog box.

Learn more at [thermofisher.com/chromeleon](https://thermofisher.com/chromeleon)

**thermo** scientific