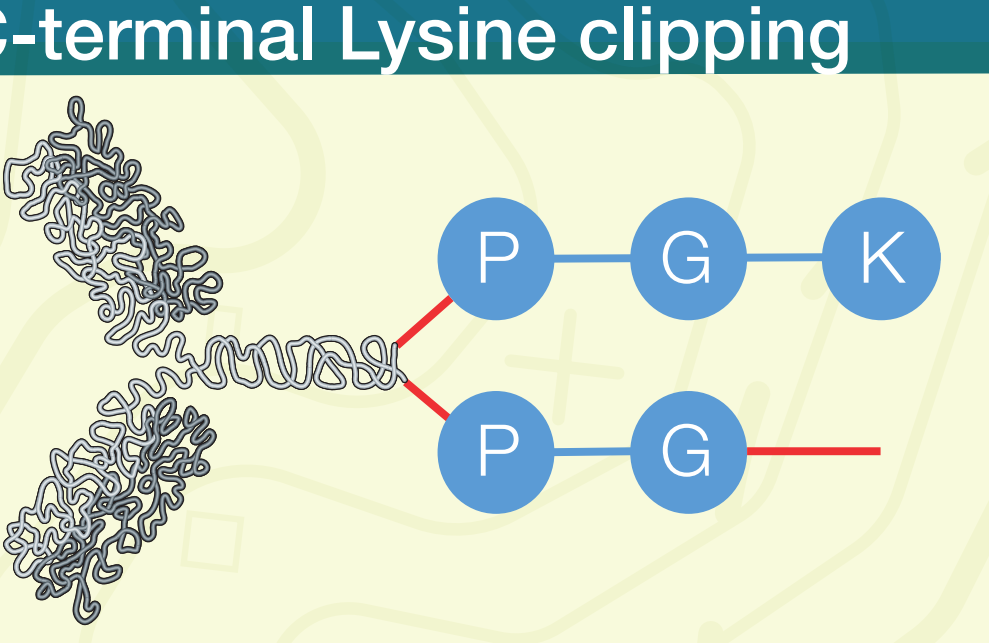
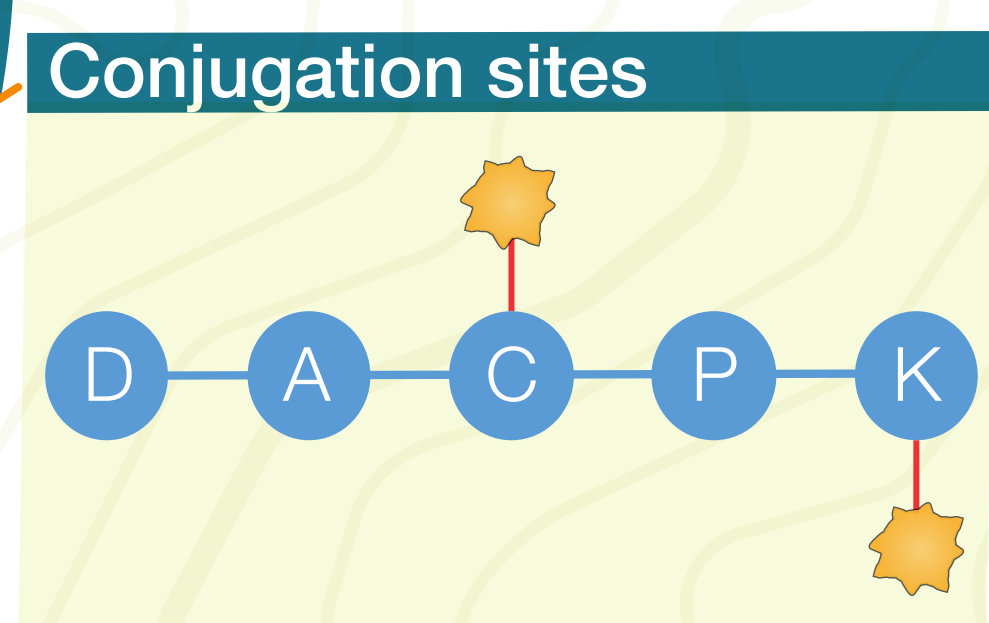
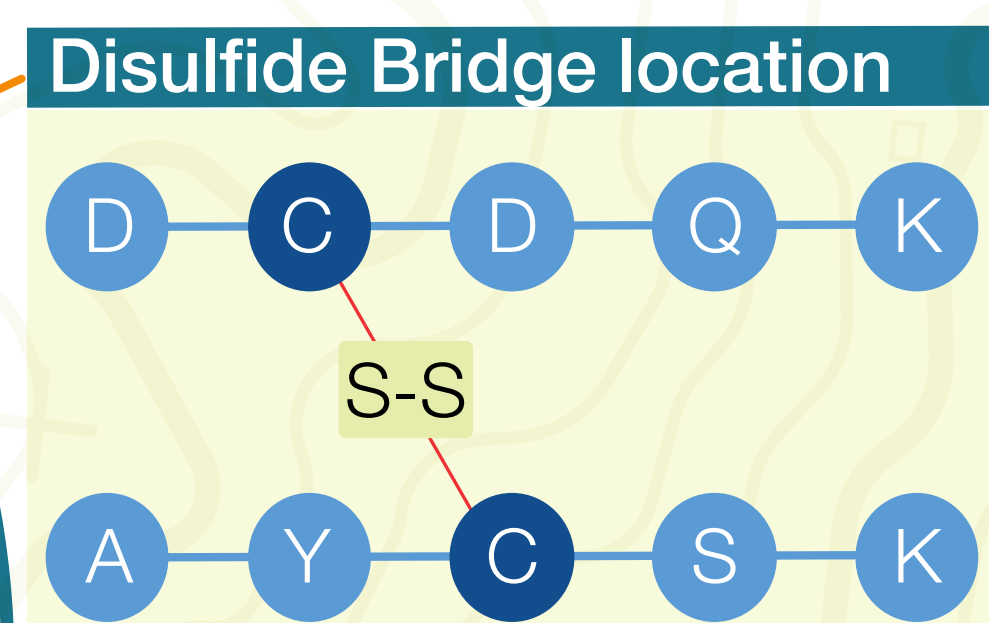
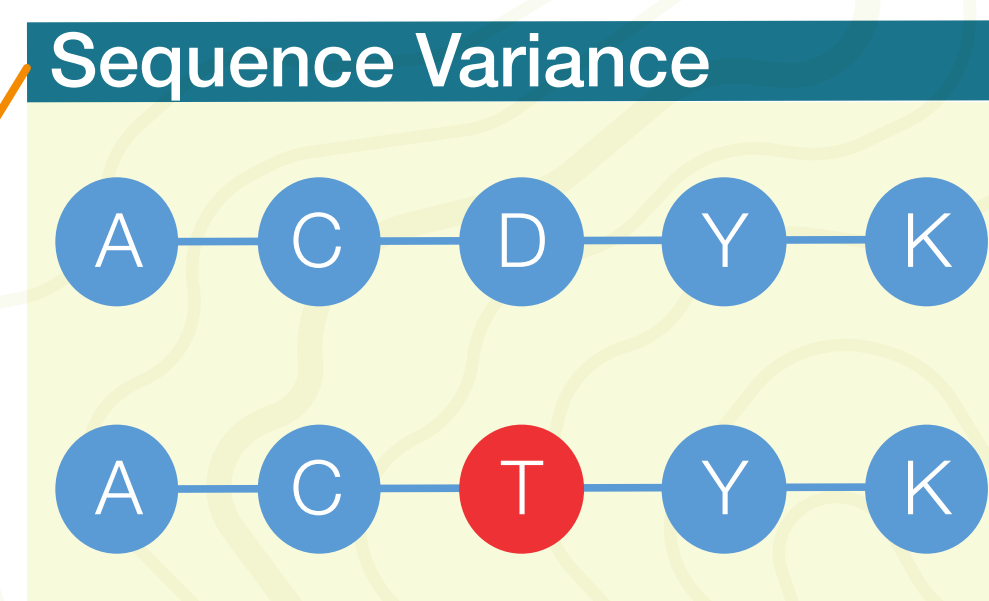
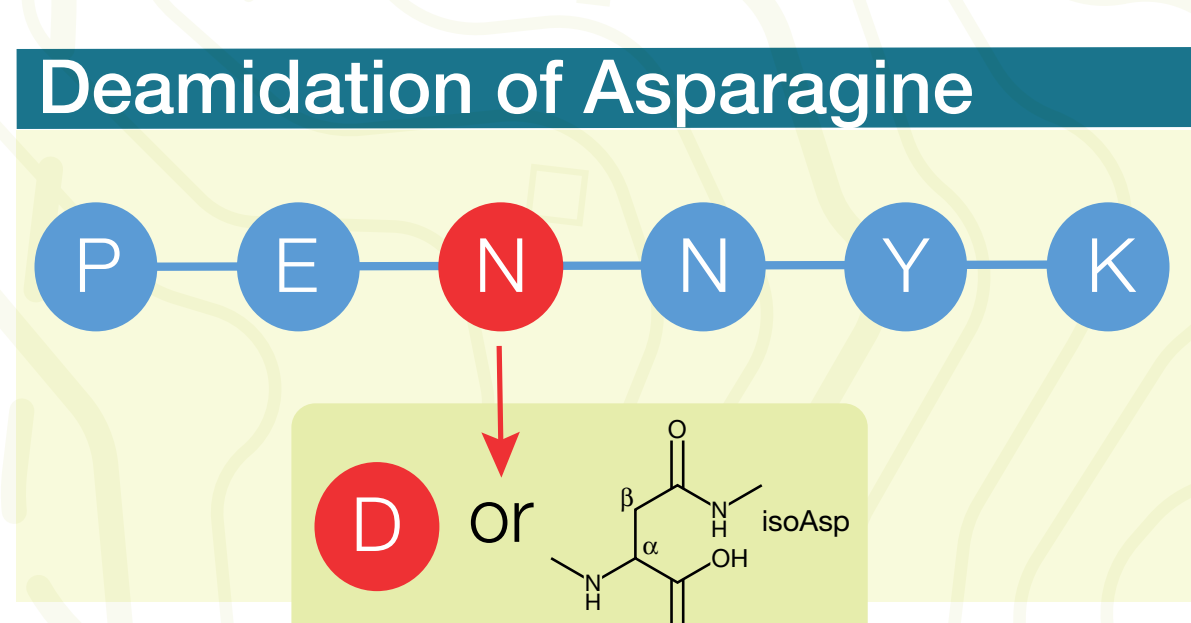
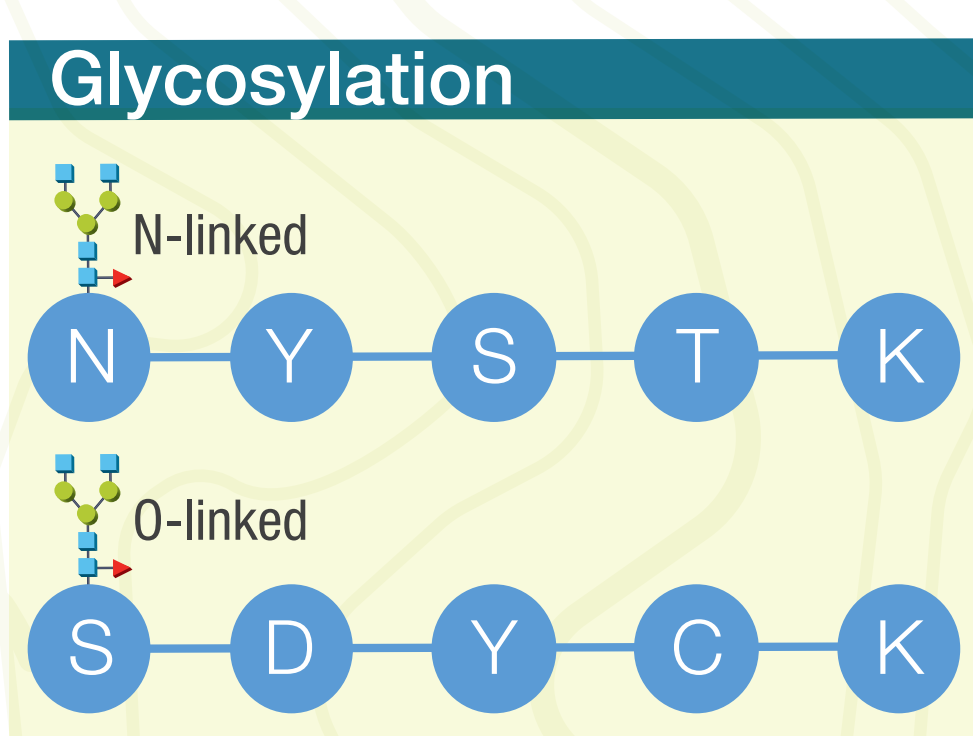
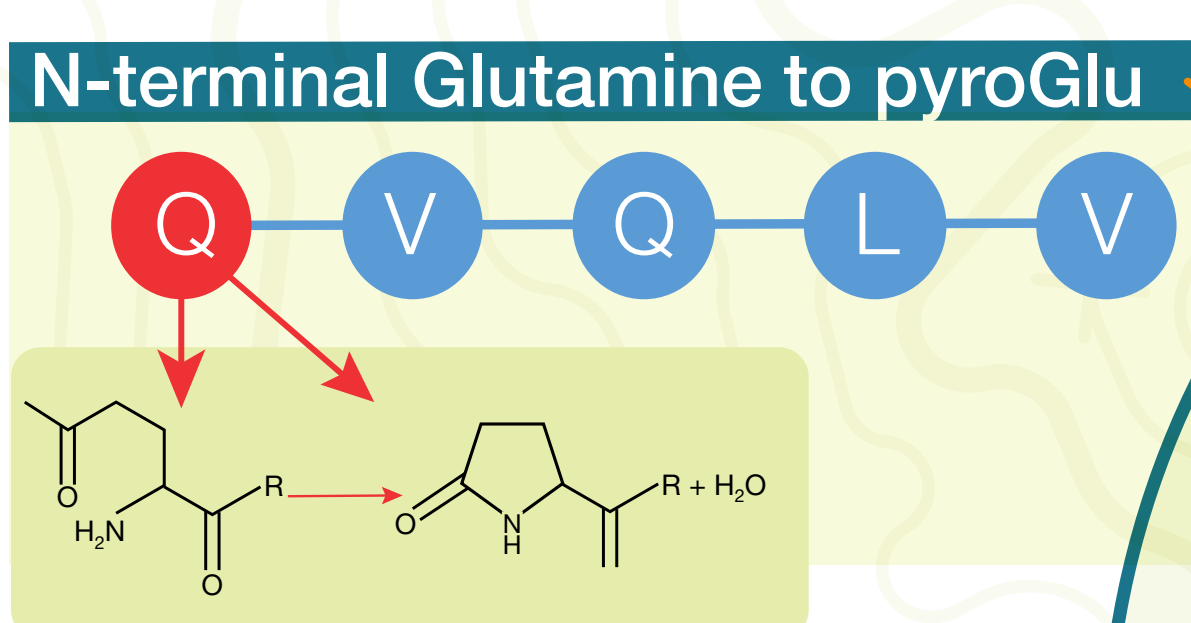
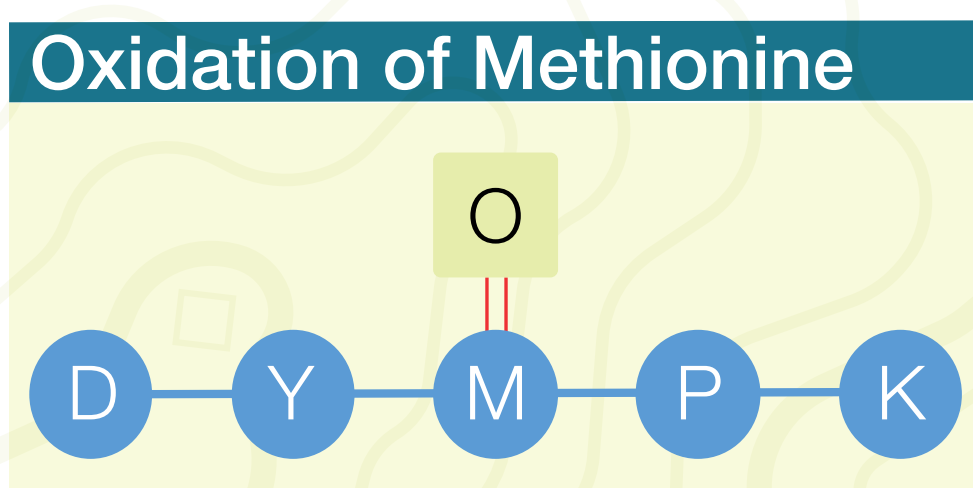


Points of interest on a peptide map

What do we look for when mapping biopharmaceuticals?

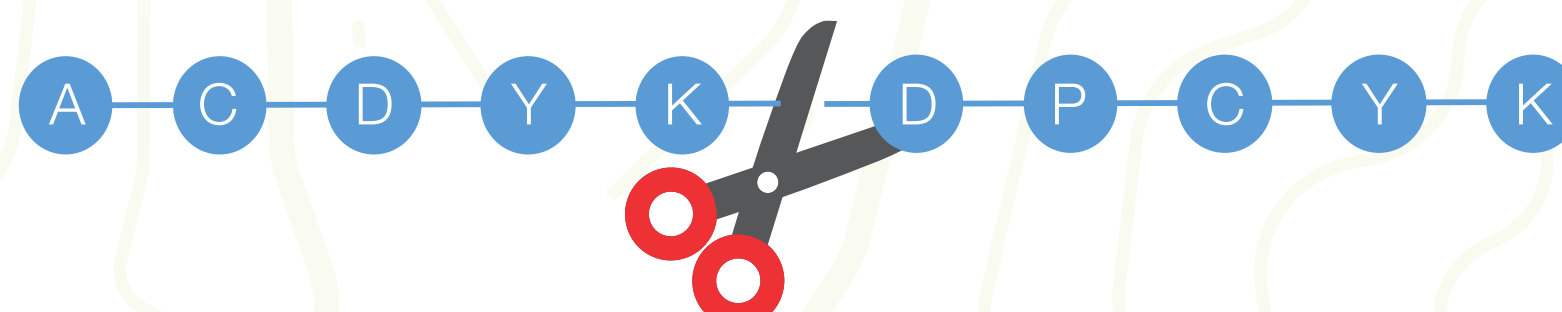


- Peptide mapping has the selectivity to simultaneously monitor many attributes or points of interest.
- This is important for maintaining the safety and efficacy of protein therapeutics

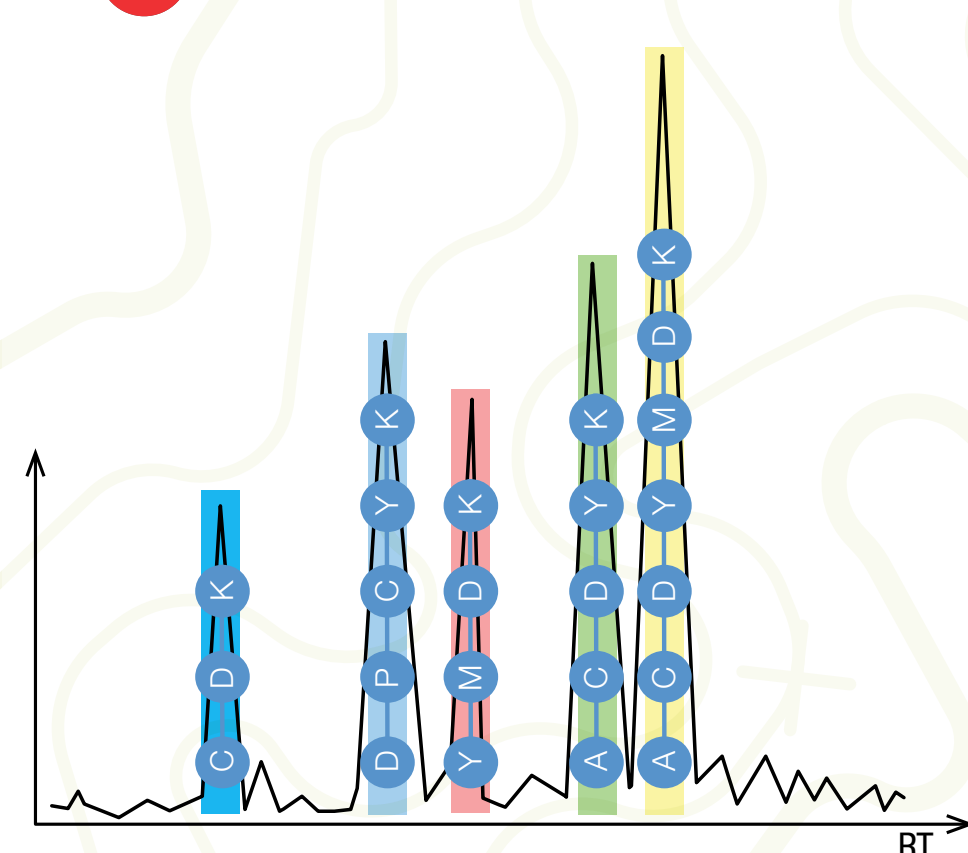
Mapping a biopharmaceutical route

What are the steps involved in peptide mapping?

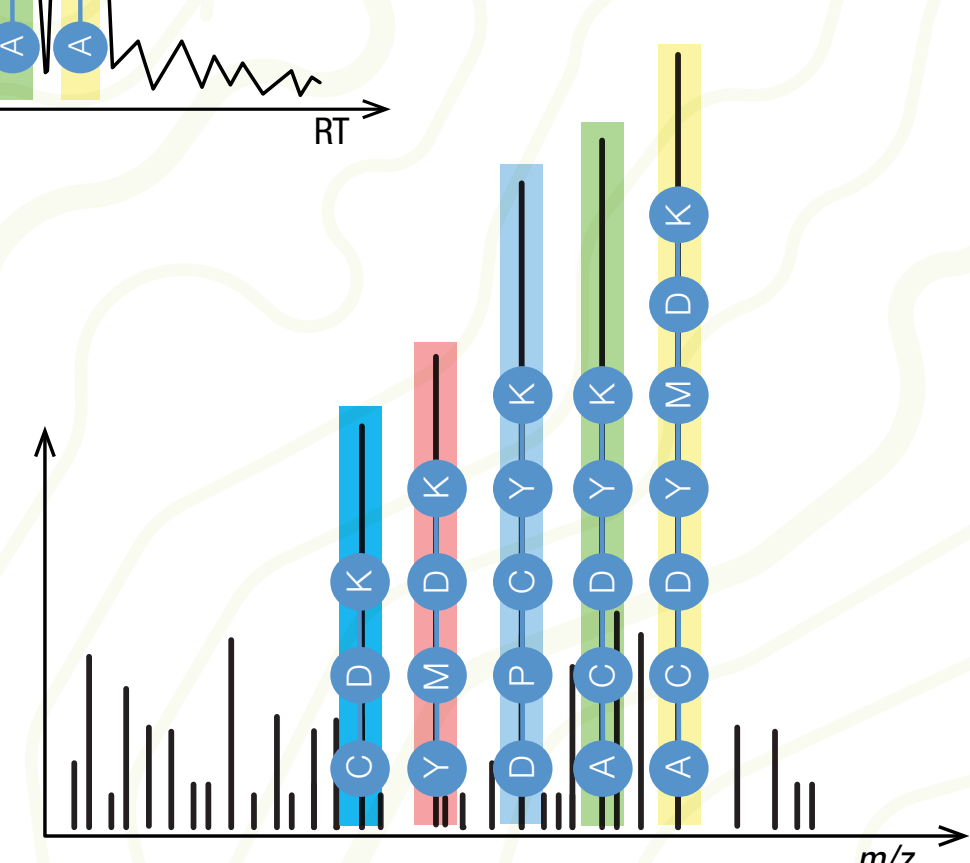
Protein Digestion



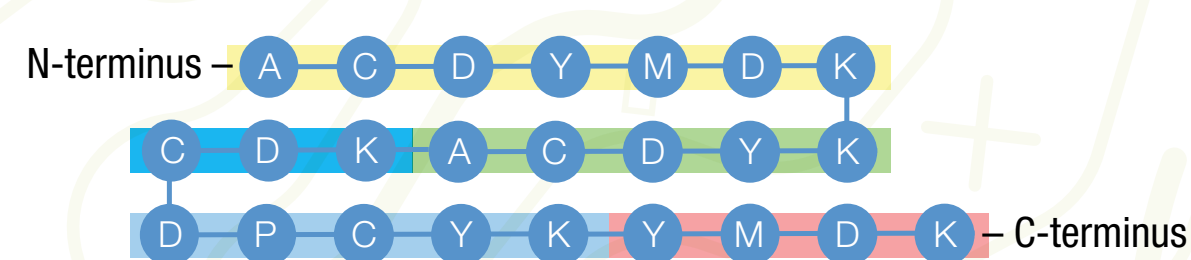
Peptide Separation



Peptide Detection



Data Interpretation



Choosing the correct tools for your journey

What are the key tools to confidently map a protein?



- Complete and reproducible protein digestion



- High resolution reproducible peptide separations



- HRAM MS and MS/MS



- Powerful yet user-friendly software

Learn more at:
thermofisher.com/PeptideMaps

thermo scientific