



'Charlie Chromeleon' Mouse Pointer

The Charlie Chromeleon mouse pointer animation is designed to be used to replace the standard Windows 'Working In Background' and 'Busy' mouse pointers. It is not recommended to be used to replace any other mouse pointer!

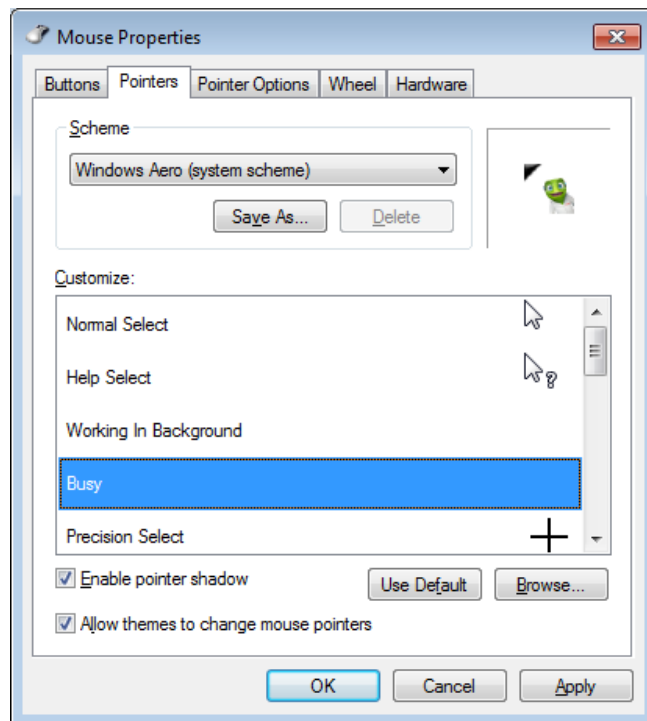
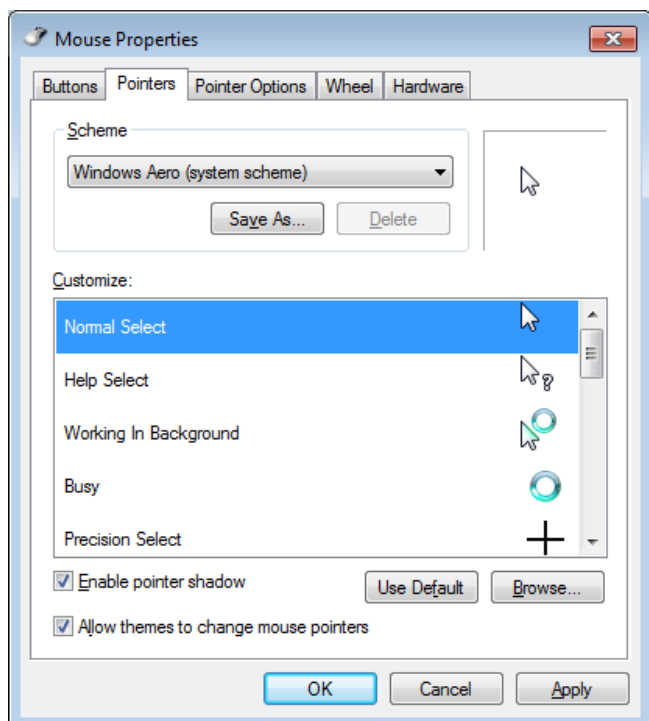
Installation

First the mouse pointer animation (Charlie.ani) must be stored to a suitable location. The recommend location is C:/Program Files (x86)/Thermo/Chromeleon but any local file location is suitable. It is not recommended to use a network shared drive but this is possible. Next follow the instructions below based on your Windows Operating System.


Windows 7

Open the Control Panel (Start – Control Panel). Depending on the display settings of the Control Panel screen you will either select: 'Appearance and Personalization' → 'Personalization' → 'Change mouse pointers' OR 'Mouse' → 'Pointers' tab

To change the pointers, double click the 'Working In Background' or 'Busy' lines and browse to the location of the animation file (Charlie.ani). Select this for both lines and click 'Apply'.



Windows 10

Open the mouse dialog by typing 'mouse pointer' in the Cortana search tool  and select 'Change the mouse pointer display or speed':

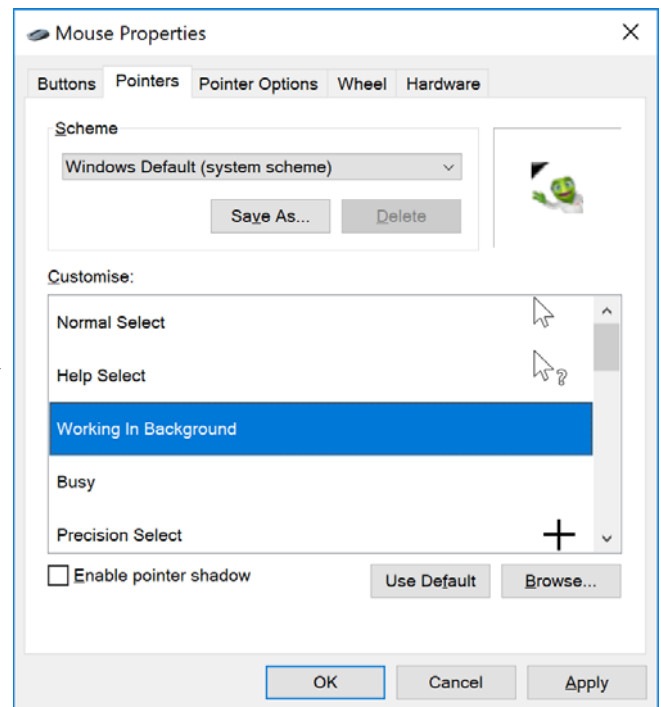
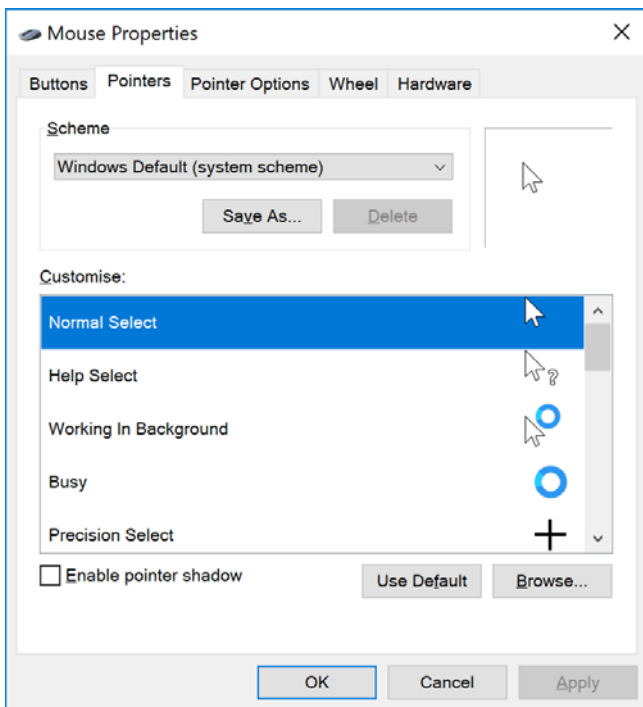


Change the **mouse pointer** display or speed

Control panel

Alternatively, navigate to Start  > Settings  > Devices > Mouse.

Next select the hyperlink to 'Additional Mouse settings' on the right side. To change the pointers, select the 'Pointers' tab and double click the 'Working In Background' and 'Busy' lines and browse to the location of the animation file (Charlie.ani). Select this for both lines and click 'Apply'.



Like Charlie Chromeleon on Facebook to follow his travels and get important updates on chromatography software!

facebook.com/CharlieLovesChromatography

Find out more at thermofisher.com/chromeleon

ThermoFisher
SCIENTIFIC