

Mass Frontier 8.0 Release Notes

These release notes list the new features in the Thermo Scientific Mass Frontier™ 8.0 application. Also included are the system requirements for the software installation and the known issues in this release of the application.

Contents

- [Features](#)
- [System Requirements](#)
- [Important Information](#)
- [Ensuring Access to the Online Databases](#)
- [Known Issues](#)
- [Trademarks](#)

For information on installing, configuring, and using the Mass Frontier 8.0 application, refer to the installation instructions, user guide, and tutorials available as PDF files.

Features

This release incorporates these new modules and these new or enhanced features:

- [New Modules](#)
- [New Features and Improvements](#)

New Modules

The Curator and Metabolika modules are new.

Curator

- Curates spectral trees for building high-quality mass spectral libraries.
- Uses a wizard to guide you through the curation process.

Metabolika

- Creates and edits reaction pathways, for example, biochemical, drug metabolism, or biodegradation pathways.
- Integrates with other modules such as Fragmentation & Mechanisms, Structure Editor, Structure Grid, and Structure / Substructure Search.
- Includes 370+ curated biochemical pathways of various organisms with annotated reactions and corresponding metadata in Pathway Explorer.
- Provides publication-quality graphics for use in presentations.

New Features and Improvements

This release includes several new features and improvements.

Chromatogram Processor

- Reading and processing common format mzML files
- Show Neutral Loss command to automatically suggest neutral losses for spectral peaks
- Subtract Blank File command to subtract ion profiles of supplied background file (blank) from the active chromatogram (sample)
- Contaminants Elimination Filter command to filter the chromatographic data for any known and unwanted substance

- Integrated component and mzLogic search inside Chromatogram Processor
- Significantly faster JCD component detection to handle large size raw files

Library Search and Tools

- Integration of the online mzCloud™ mass spectral database. Access to the mzCloud database from Data Manager and Chromatogram Processor.
- New similarity search algorithms including Similarity Forward and Similarity Reverse. Improved matching algorithms for Identity, Identity Substructure, Tree Search, and SubTree Search library searches.
- New probability-based confidence-score calculations trained on the extensive mzCloud database.
- MolGate™ structure search in a new aggregator of relevant public databases comprising 40 million chemical compounds.
- mzLogic™ analysis for ranking structure candidates using spectral similarity and structure similarity matching against the mzCloud database.

Fragments and Mechanisms

Provides more fragmentation mechanisms (>52,000 fragmentation schemes and ~220,000 decoded mechanisms) in HighChem Fragmentation Library™, which means more fragments are predicted.

Structure Editor

Supports two-way conversion of MOL to InChi string and InChi key.

Server Manager 3.0

- Supports migration of Mass Frontier 7 libraries to the new Mass Frontier 8.0 format.
- Provides backup and restore capabilities for spectral libraries.

Usability Improvements

- Multiple monitor support.
- New user interface inspired by Microsoft Office™.

Performance Improvements

- Built on the latest Windows™ architecture and SQL Server 2014.
- Extensive use of parallelization for faster processing of CPU intensive tasks.
- Improved integration of different modules across the application.

New Flexera Licensing System

Licensing activation and deactivation through the Flexera™ licensing server.

System Requirements

These are the minimum required and recommended hardware and software configurations for the Mass Frontier 8.0 application.

| System | Minimum configuration | Recommended configuration |
|----------|---|---|
| Hardware | <ul style="list-style-type: none">• Intel™ compatible processor with a minimum speed of 1 GHz• 8 GB RAM• 30 GB of disk space• DVD-ROM drive• Monitor resolution display of 1024×768 p | <ul style="list-style-type: none">• Intel™ compatible processor with a minimum speed of 2.5 GHz• 32 GB or higher of RAM• 100 GB of solid-state drive (SSD) disk space• DVD-ROM drive• Dual monitors with resolution display of 1920×1080 p |
| Software | <ul style="list-style-type: none">• Microsoft Windows 7 Professional (English) SP1 (64-bit) or Windows 10 Professional (64-bit)• Microsoft .NET 4.6.1• Microsoft Office 2010• Adobe™ Acrobat™ Reader™ DC• Microsoft Windows Internet Explorer™ 11 or later | <ul style="list-style-type: none">• Windows 10 Enterprise LTSC 2016 (64-bit) with latest updates• Microsoft .NET Framework 4.6.1 or higher• Microsoft Office 2016• Adobe™ Acrobat™ Reader™ DC• Microsoft Windows Internet Explorer™ 11 or later |
| System | <ul style="list-style-type: none">• To run processing workflows with online mass spectral database searches, ensure the computer has unblocked access to the mass spectral databases on the Internet.• Ensure that the computer has the correct time and date settings and is synchronized with Internet time.• Set the Region and Language setting to English (United States). | |

Important Information

The following topics contain important information.

General

The Mass Frontier 8.0 application can process LC/MS and infusion data files produced by high-resolution accurate-mass (HRAM) Thermo Scientific™ instruments, such as the Orbitrap ID-X™, Orbitrap Fusion™, Orbitrap™ hybrids, Q Exactive™, and Exactive™ mass spectrometers, and nominal mass Thermo Scientific instruments, such as the LTQ™ series mass spectrometers. It is compatible with Windows 7 SP1 (64-bit) and Windows 10 (64-bit) operating systems.

Installation

You must have administrator rights to install Mass Frontier 8.0 software on your computer. For detailed installation instructions, refer to the Installation Instructions located on the software media or downloaded as a ZIP file from Flexera.

Licenses

The demo version comes with the Mass Frontier 8.0 Base plus Curator trial license that is active for 60 days.

For a permanent license, there are two purchase options:

- **Mass Frontier 8.0 Base**—Provides a permanent license for only the Mass Frontier application.
- **Mass Frontier 8.0 Base + Curator**—Provides a permanent license for the Mass Frontier application and the additional Curator module.

If you purchase only the base license, you can purchase the **Curator License for Mass Frontier 8.0** option at a later date. Contact your local Thermo Fisher sales person for a quote. This option gives you a license key to permanently activate the Curator module in the Mass Frontier 8.0 application.

Supported Local Language and Date/Time Format for the Data System Computer

The Mass Frontier 8.0 application was tested and is therefore only supported for US-English Only locale settings. To change the format on your computer, go to **Control Panel > Region and Language**.

Upgrading from Mass Frontier 7.0, 6.0, or Earlier

To install Mass Frontier 8.0 software on a processing computer that has previous versions, you do not need to uninstall the earlier versions. Mass Frontier 8.0 and earlier versions such as Mass Frontier 7.0 can coexist on the same computer.

Migrating Spectral Libraries from Mass Frontier 7.0, 6.0 or Earlier

The library file format in Mass Frontier 8.0 has changed compared to previous versions. Server Manager 3.0 allows you to migrate Mass Frontier 7.0 spectral libraries into Mass Frontier 8.0 format. Migrating spectral libraries from Mass Frontier 6.0 or earlier versions is a two-step process. First migrate the Mass Frontier 6.0 spectral libraries into the Mass Frontier 7.0 format, and then migrate the Mass Frontier 7.0 libraries into the Mass Frontier 8.0 format.

Note For more information regarding migrating Mass Frontier 7.0 libraries to Mass Frontier 8.0 format, refer to the *Migrating Spectral Libraries* section in the *Mass Frontier 8.0 User Guide*.


Multiple Monitor Support

Mass Frontier 8.0 software supports multiple monitors. To connect the data system computer to two monitors, use the two display ports on the back of most computers.

Tutorials

Mass Frontier 8.0 comes with seven step-by-step tutorials that are available from the application window. Follow the tutorials to get started with the application.

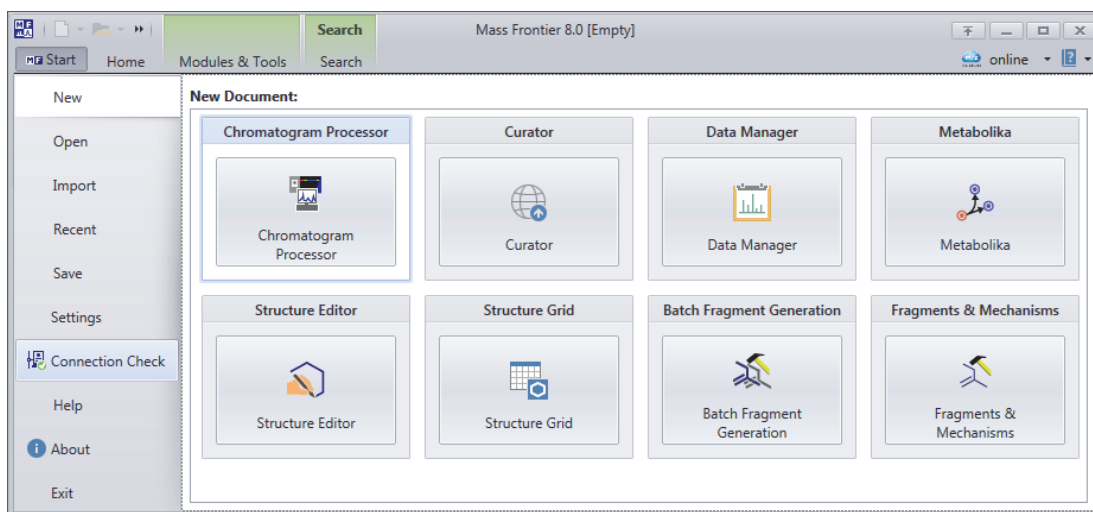
❖ To access the tutorials and the user guide

Click the **Help** icon, , in the upper right corner of the application window.

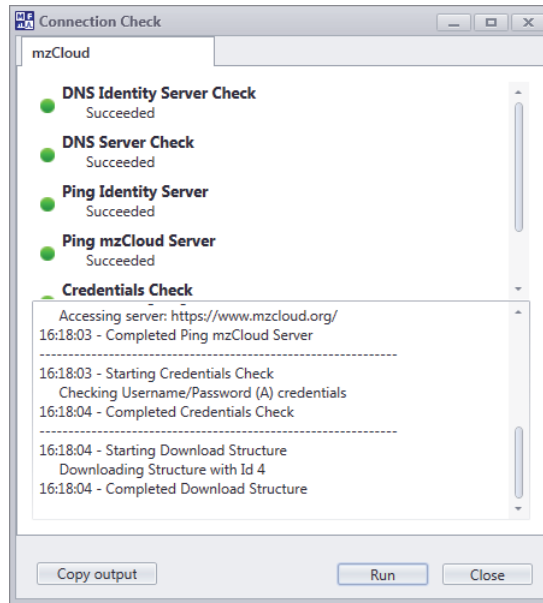
A typical Mass Frontier analysis that identifies unknown compounds or retrieves structures and metadata searches databases on the Internet. To run these searches, the application must have unblocked Internet access to these databases. To test the application's access to the online mass spectrum databases, follow this procedure.

❖ To test and troubleshoot the application's access to the mzCloud and MolGate server

1. Run the connection check from the Mass Frontier Start menu as follows:
 - a. Choose **Connection Check**.



b. In the Connection Check dialog box, click **Run**.



If the connection checks succeed, the application has access to the mzCloud and MolGate server.

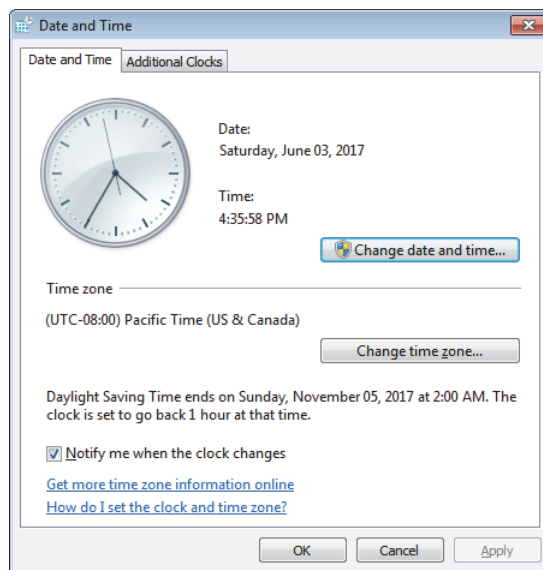
2. If a connection check fails, check the following:
 - The computer's physical connection to the Internet
 - The computer's time and time zone settings

The mzCloud connection check includes a validation of the date and time settings on the processing computer.

❖ **To check the time and time zone settings**

1. Open the Date and Time dialog box.

Tip For the Windows 7 operating system, open the Control Panel. In the View By list, select **Category**. Then choose **Clock, Language, and Region > Date and Time**.



2. Make sure that the date, time, and time zone settings are correct.

Known Issues

3. If the Internet Time tab is available, synchronize the Internet time.

Note The Internet tab is only available when your computer is not part of a network domain. If your computer is not part of a network domain that synchronizes the computer's clock to the network server, you can use an Internet server to synchronize the computer's clock.

Suggested recovery actions

- For some issues, restarting the application is the appropriate recovery action.
- As a fix we generally do not recommend reinstalling the software or the operating system, which more commonly occurs after you install a new hard drive.

Feature requests and other removed items

- We do not include issues where there is insufficient information logged to successfully reproduce the reported problem.
- We do not list feature requests as software issues, regardless of the reported significance or severity of the request. Product managers evaluate logged feature requests for future releases.
- We report only discrepancies in the documented software as known issues.

Terminology

| Severity | Interpretation |
|-----------------|---|
| Crash/Data Loss | A problem that renders the system unusable because either an entire function is unusable and no workaround exists, or use of the current system compromises data integrity or results in data loss. Catastrophic problems also include significant and non-obvious quantitative errors, and all human and instrument safety issues. |
| Major Problem | A serious issue that does not affect data integrity (meaning data loss, corruption of data, or the wrong answer), but affects the customer's ability to use the product as designed. It can be a failure, design issue, or documentation error or omission. A workaround might or might not exist. |
| Minor Problem | A minor error or poor behavior of a product feature. There is probably a workaround. |
| Cosmetic | An issue that has a limited effect on customer usage of the product; for defects with visibility so low that a customer might never see it; or for ease of use issues or other items not causing any performance degradation. |

| Risk | Interpretation |
|---------|--|
| High | Occurrence is likely to happen and can compromise operation. |
| Medium | Occurrence is uncommon, but if it occurs, can compromise operation. |
| Low | Issue is minor; however, the software might operate differently from a user's expectations. A workaround is often available. |
| No Risk | This issue causes no problems but is commonly an inconsistency or a 4- Low issue. |

Known defects

Table 1 contains known defects in the software, categorized by software section, with a brief abstract and information related to each defect's severity and risk. The Item ID is the internal number assigned to each issue. Product management assesses risk, which can differ significantly from the reported severity.

Table 1. Known defects (Sheet 1 of 3)

| Software section | Severity | Abstract | Risk | Item ID |
|------------------------|----------|--|------|-------------|
| Chromatogram Processor | Minor | Neutral Loss annotations are sometimes displayed out of spectrum area and cropped. | Low | MFEIGHT2716 |

Table 1. Known defects (Sheet 2 of 3)

| Software section | Severity | Abstract | Risk | Item ID |
|--|----------|--|--------|-------------|
| Chromatogram Processor | Minor | New Contaminant window cannot be canceled or closed if the Name field is empty. See workaround in the Troubleshooting section. | Low | MFEIGHT2692 |
| Component Tree Search | Major | Tree Search not able to differentiate some flavonoid compounds if the MS2 spectrum has only one or two significant peaks | Medium | MFEIGHT2704 |
| Contaminants Elimination Filter | Minor | When running commands from Command Window, the progress bar sometimes does not disappear and window cannot be closed. See workaround in the Troubleshooting section of the user guide. | Low | MFEIGHT2778 |
| Curator | Minor | NaN is sometimes displayed for Correlation at the Recalibrate step. | Low | MFEIGHT2794 |
| FISh Detection | Minor | FISh filter: Input m/z list sorting on m/z column not working as expected. | Low | MFEIGHT2765 |
| Fragments & Mechanisms and Batch Fragmentation | Major | Knowledge-based fragmentation using fragmentation libraries ignores isotopically labeled hydrogens in structures. | Medium | MFEIGHT2779 |
| Fragments & Mechanisms and Batch Fragmentation | Major | No fragments for H- Electron Impact (EI, EC) ionization when starting from neutral structure. As a workaround, manually specify the "Unspecified H-" charge site prior the fragment generation. | Low | MFEIGHT2792 |
| Licensing | Minor | Demo license expiration date not updated after successful activation of the demo extension key. The new expiration date only kicks in after the previous demo or trial license expires. | Low | Bug 76909 |
| Main Application | Minor | Intensive CPU or GPU utilization when processing or redrawing makes application unresponsive for a while and a black box appears. See workaround in the Troubleshooting section of the user guide. | Low | MFEIGHT1601 |
| Main Application Settings | Minor | mzCloud enable/disable check box in mzCloud section does not work when clicking OK button and Apply button is disabled. As a workaround, change any other field in the settings and click Apply. | Low | MFEIGHT2789 |
| Monoisotopic Mass Search | Major | If the search matches compound structure in the user libraries, only the compound is shown in the result table without any underlying spectral trees or records. | Medium | MFEIGHT2776 |

Table 1. Known defects (Sheet 3 of 3)

| Software section | Severity | Abstract | Risk | Item ID |
|--|----------|---|--------|-------------|
| mzLogic and MolGate | Major | MolGate does not support charged structures. | Medium | MFEIGHT2703 |
| mzLogic Component Search | Minor | No warning message when conflicting polarity of adduct selected. | Low | MFEIGHT2738 |
| mzLogic Component Search | Minor | The name of the Similar Structures does not include special characters and the long names are not displayed fully. | Low | MFEIGHT2724 |
| mzLogic and MolGate Tool | Minor | In some cases, the Results Preview pane does not show correct number of structures when using Structure grid as Workspace. | Low | MFEIGHT2683 |
| mzLogic and MolGate Tool | Minor | The Accuracy edit box sometimes shows value with 15 decimal places. | Low | MFEIGHT2730 |
| Precursor Search | Major | The search results are shown for recalibrated spectral trees by default, if they are not present on the matched precursor ion, no spectral trees are shown initially. To display spectral trees, the user has to manually change the view to filtered or raw trees. | Low | MFEIGHT2776 |
| Server Manager | Major | Migrating Mass Frontier 7 libraries with spectral trees having data reduced chromatograms, all components in those chromatograms are inserted as new empty compounds in Mass Frontier 8.0. See workaround in the Troubleshooting section of the user guide. | Low | MFEIGHT2767 |
| Structure and Monoisotopic Mass Search | Major | Individual fragments in the fragmentation schemes are not searched. | Medium | MFEIGHT2791 |
| Structure Editor | Major | ¹⁸ F is not supported in Structure Editor | Low | MFEIGHT2762 |

Trademarks

Mass Frontier, MolGate, mzLogic, mzCloud, Metabolika, and HighChem Fragmentation Library are trademarks of HighChem LLC, in Slovakia.

The following are registered trademarks in the United States and other countries: Microsoft and Windows are registered trademarks of Microsoft Corporation. Intel, Intel Core, and Xeon are registered trademarks of Intel Corporation. Adobe, Reader, and Acrobat are registered trademarks of Adobe Systems Inc.

The following is a trademark in the United States and possibly other countries: Flexera is a registered trademark of Flexera Software, Inc.

All other trademarks are the property of Thermo Fisher Scientific Inc. and its subsidiaries.