

# An Innovative Injector Allows Helium Carrier Gas Conservation in Analytical Gas Chromatography

*A. Caruso, M. Santoro, P. Magni, S. Pelagatti, and R. Facchetti  
Thermo Fisher Scientific, Milan, Italy*



# Overview

**Purpose:** We introduce a new, innovative injector which allows conservation of helium carrier gas. While preserving the analytical GC column flow with helium, it maintains the septum purge and the split flows with another inert gas like nitrogen - even during the analytical run. The analytical performances of the injector are in line with those of the common split/splitless injector module.

## Introduction

The helium supply chain crisis has negative implications on research and laboratory operations world-wide. Helium rationing, delayed deliveries and price increases still cause difficulty in production planning and uncertainty in instrument productive uptime.

Although the GC & GC-MS segment consumes less than one percent of the global helium supply usage per year, the shortages and delivery interruptions have wide-spread consequences for many industries utilizing varied analytical techniques.

There are different way to tackle this problem, one is reducing the split ratio during the split time of the injection or switch to another carrier gas such as hydrogen or switch gas only when the GC or GC/MS are not running.

All of these solutions present some downsides: reducing the split flow is not suitable for splitless injections and can affect accuracy for smaller volume injections, hydrogen presents some safety concerns and require a translation and optimization of the methods in use, the switching of gas when the instrument is not running is not applicable to routine labs and requires some time to switch back to helium before -resuming operations.

The Thermo Scientific™ Instant Connect Helium Saver Injector Module allows to massively reduce the helium consumption while working as an usual Split Splitless injector. The Helium saver module benefits from the modularity concept of all of the injectors and detectors for the Thermo Scientific™ TRACE™ 1300 Series GC and can be quickly installed and operative maximizing instrument uptime. The Helium Saver module can be mounted also on pre-existing TRACE 1300 Series GC systems without modifications.

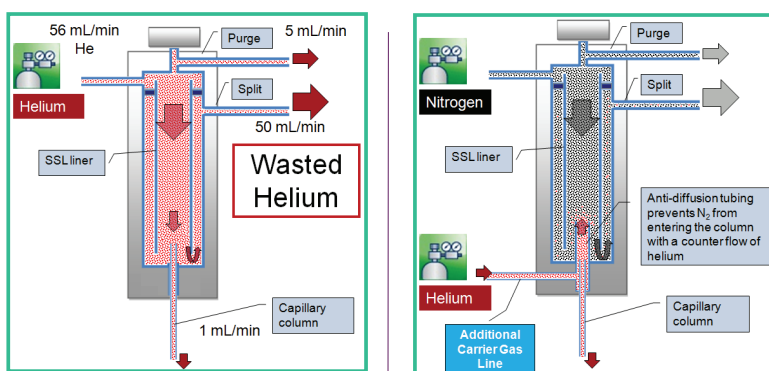
**FIGURE 1. TRACE 1300 Series GC Modularity with user-installable modules**



Until now, split/splitless injectors use one single gas as carrier, for septum purge and sample split. Usually, only  $\sim 1/10^{\text{th}}$  -  $1/50^{\text{th}}$  of the total gas flow enters the column. Purge and split flows cannot be reduced beyond a certain limit without introducing contamination into column/detector due to sample matrix and septa particles accumulated in liner and lines or without air diffusing from septa seals.

The Helium Saver injector uses two different gases: nitrogen is used for septum purge and sample split flows while helium only feeds the analytical column, so that in this way its consumption is drastically reduced.

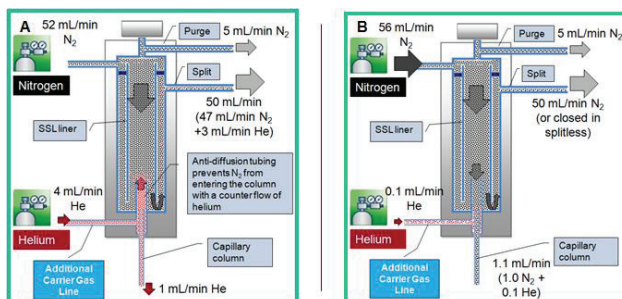
**FIGURE 2. Differences between the standard SSL injector and the Helium Saver injector.**



## How the Helium Saver Injector Works

During all “non-injection” periods, helium is supplied with a flow slightly higher than the column flow. Helium consumption is drastically reduced compared to a standard Split/Splitless injector (Figure 3A).

**FIGURE 3. Helium flow during non-injection (A) and injection phase (B).**



During the injection period, nitrogen flows into the column for sample introduction, and helium is supplied at 0.1 mL/min to keep the connection swept and avoid dead volumes (Figure 3B).

When the GC is in stand-by, it can be left in this condition with zero consumption of helium. Separation is always done using helium carrier gas.

## Benefits of the Helium Saver Injector

The Helium Saver injector is able to significantly increase the duration of helium gas tanks. A standard gas tank can last up to 3.5 years when continuously used 24/7 all 365 days of the year for GC-MS analysis and up to 14.6 years shutting the helium off or switching to N<sub>2</sub> on weekends and overnight. This means that, potentially, this could be the last and only helium cylinder that will be needed for the instrument lifetime.

The Instant Connect Helium Saver module is operated exactly like an SSL injector allowing a pain free translation of any methods that involves a Split/Splitless type injection.

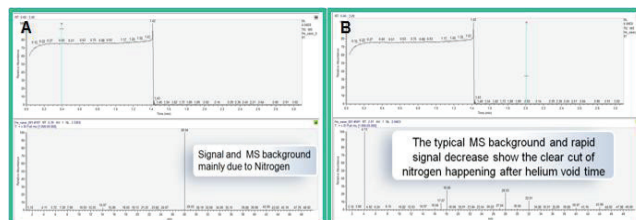
As an example, we chose the GC-MS analysis of semi-volatiles compounds performed following the guidelines of **U.S. EPA Method 8270**.

The method dictates the employ of a carrier flow of 1 mL/min with a split flow of 60 mL/min, the gas saver is turned on after 3 minutes and reduces the split flow to 20 mL/min. The GC run time is 25 minutes, and we can estimate for a routine lab, a total of 57 analyses per day for round the clock operations. The daily helium consumption calculated would be 45.56 liters, considering a helium tank with a capacity of 7300 liters, this would guarantee a tank duration of 157 days for continuous uninterrupted use. The helium consumption using the Helium Saver injector would be reduced to 5.76 liters per day, extending the tank duration to 1267 days with a significant impact on savings.

## Helium Saver Module Performances

The main concern users may have about the injector may be whether its double gas configuration may negatively influence the analysis or its performances may differ from those of the regular Split/Splitless injector. The switch between the two gases is rapid and efficient, due to the minimum volume of the injector area (Figure 3).

**FIGURE 4. Nitrogen/Helium Switch. Splitless injection, 1 min. Chromatogram on top.**

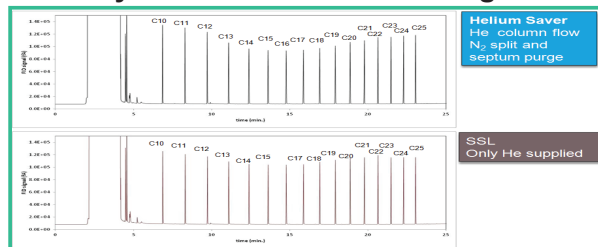


A.) During the injection phase, only nitrogen flows into the column. The chromatographic signal (see top) and the MS spectrum reflect the large amount of nitrogen reaching the MS Quadrupole.

B.) After the 1-minute splitless, helium starts flowing into the column. We can still observe a high nitrogen signal for another 30 seconds or so. This corresponds to the column void time. Immediately after helium reaches the end of the column and the MS detector, the chromatographic signal drops and the MS spectrum of the baseline is the typical background observed in MS with helium carrier gas. The proper water-nitrogen ratio in the spectrum and the sharp signal drop clearly show how quickly the system switches from nitrogen to helium.

The injector module performance matches those of the regular SSL injector. The chromatograms obtained by this module are comparable to those obtained with SSL module in both areas and retention times.

**FIGURE 5. Hydrocarbon mix chromatogram.**



**FIGURE 6. Areas and retention time comparison between SSL and Helium Saver Module.**

Component	Absolute peak area (counts)			Retention times (min.)		
	Helium only	Helium Saver (N2 + He)	Diff.	Helium only	Helium Saver (N2 + He)	Diff.
nC10	1509238	1643138	+8.9	6.878	6.862	-0.017
nC11	1501697	1631649	+8.7	8.312	8.297	-0.015
nC12	1525277	1634623	+7.2	9.733	9.720	-0.013
nC13	1539736	1643560	+6.7	11.100	11.092	-0.008
nC14	1528093	1626721	+6.5	12.393	12.387	-0.007
nC15	1535144	1631809	+6.3	13.618	13.612	-0.007
nC16	1555112	1644967	+5.8	14.778	14.773	-0.005
nC17	1564216	1652088	+5.6	15.877	15.873	-0.003
nC18	1566094	1652903	+5.5	16.922	16.918	-0.003
nC19	1573423	1658194	+5.4	17.917	17.913	-0.003
nC20	1588978	1677003	+5.5	18.867	18.865	-0.002
nC21	1584144	1669784	+5.4	19.773	19.772	-0.002
nC22	1585427	1668266	+5.2	20.643	20.640	-0.003
nC23	1582252	1661415	+5.0	21.477	21.475	-0.002
nC24	1588109	1665599	+4.9	22.278	22.277	-0.002
nC25	1568167	1640702	+4.6	23.047	23.047	0.000

No changes on RT (few 1/1000 of a minute) nor on peak areas

Repeatability has been tested as well, both in split and splitless mode along with the linearity of the split ratio. The results confirm the excellent analytical performance of the module

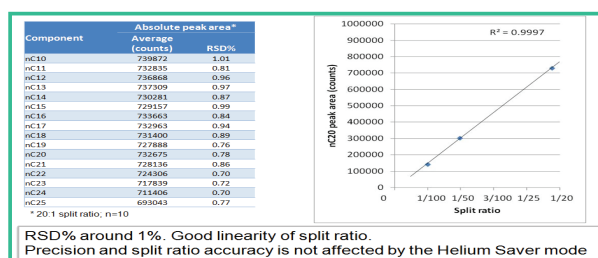
**FIGURE 7. Area and retention times repeatability for splitless mode.**

Component	Absolute peak area		Retention times	
	Average (counts)	RSD%	Average (min.)	SD (min.)
nC10	1675299	0.48	6.863	0.001
nC11	1660541	0.59	8.299	0.001
nC12	1674407	0.66	9.722	0.001
nC13	1679538	0.53	11.092	0.001
nC14	1662749	0.54	12.389	0.001
nC15	1663737	0.71	13.615	0.001
nC16	1672853	0.48	14.775	0.001
nC17	1679632	0.50	15.875	0.001
nC18	1679468	0.45	16.920	0.002
nC19	1685406	0.50	17.916	0.002
nC20	1702906	0.54	18.866	0.002
nC21	1697257	0.56	19.774	0.002
nC22	1695464	0.56	20.644	0.001
nC23	1689021	0.61	21.478	0.001
nC24	1696156	0.60	22.279	0.001
nC25	1671095	0.64	23.049	0.001

RSD% below 1% on absolute peak areas and SD in the range of 1/1000 of a minute on retention time

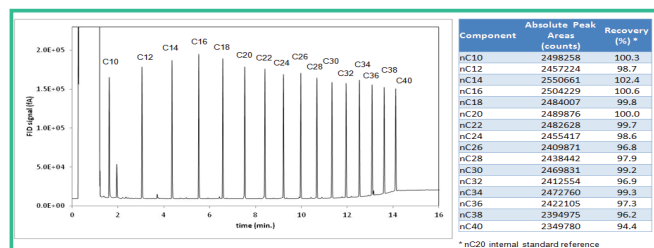
Precision is not affected by the Helium Saver Module

**FIGURE 8. Area and retention times repeatability for split mode, and split ratio linearity.**

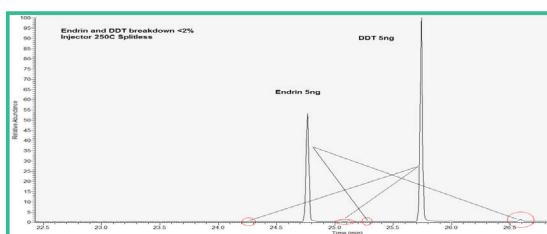


The Injector module has been tested for high boiling compounds discrimination and activity towards labile compounds, always with excellent results.

**FIGURE 9. Discrimination results on a C10-C40 hydrocarbon mix.**



**FIGURE 10. Endrin and DDT breakdown.**



Finally, linearity has been tested for the compounds of EPA 8270, with the evaluation of the  $R^2$  for the calibration curves.

**FIGURE 11. Calibration curves linearity for EPA 8270 compounds.**

Compound Name	SSL	Helium Saver
N-Nitrosodimethylamine	0.99852	0.99871
Pyridine	0.99831	0.99855
Phenol	0.99843	0.99722
Aniline	0.99846	0.99813
Phenol, 2-chloro-	0.99847	0.99743
N-nitrosodi-n-propylamine	0.99811	0.99808
Phenol, 2-nitro-	0.99838	0.99859
Phenol, 2,4-dichloro-	0.99763	0.99937
p-Chloroaniline	0.99901	0.99875
Phenol, 4-chloro-3-methyl-	0.99561	0.99660
Hexachlorocyclopentadiene	0.99541	0.99856
Phenol, 2,4,6-trichloro-	0.99723	0.99948
Phenol, 2,4,5-trichloro-	0.99609	0.99893
2-Nitroaniline	0.99774	0.99915
Dimethyl phthalate	0.99820	0.99757
2,6-dinitrotoluene	0.99702	0.99920

## Conclusion

The Instant Connect Helium Saver Module is an innovative and exclusively featured injector whose revolutionary concept benefits the user with significant and continuous helium gas savings without influencing the operator routine. It also guarantees analytical performances that are comparable to those of the most widespread Split/Splitless injector. The injector is compatible with all the TRACE 1300 Series GC systems and doesn't require the intervention of a service engineer for its installation allowing immediate savings and productivity.

[www.thermoscientific.com](http://www.thermoscientific.com)

©2014 Thermo Fisher Scientific Inc. All rights reserved. ISO is a trademark of the International Standards Organization. All other trademarks are the property of Thermo Fisher Scientific Inc. and its subsidiaries. This information is presented as an example of the capabilities of Thermo Fisher Scientific products. It is not intended to encourage use of these products in any manners that might infringe the intellectual property rights of others. Specifications, terms and pricing are subject to change. Not all products are available in all countries. Please consult your local sales representative for details.



Thermo Fisher Scientific,  
Austin, TX USA is  
ISO 9001:2008 Certified.

**Africa** +43 1 333 50 34 0  
**Australia** +61 3 9757 4300  
**Austria** +43 810 282 206  
**Belgium** +32 53 73 42 41  
**Canada** +1 800 530 8447  
**China** 800 810 5118 (free call domestic)  
400 650 5118

**Denmark** +45 70 23 62 60  
**Europe-Other** +43 1 333 50 34 0  
**Finland** +358 9 3291 0200  
**France** +33 1 60 92 48 00  
**Germany** +49 6103 408 1014  
**India** +91 22 6742 9494  
**Italy** +39 02 950 591

**Japan** +81 45 453 9100  
**Latin America** +1 561 688 8700  
**Middle East** +43 1 333 50 34 0  
**Netherlands** +31 76 579 55 55  
**New Zealand** +64 9 980 6700  
**Norway** +46 8 556 468 00  
**Russia/CIS** +43 1 333 50 34 0

**Singapore** +65 6289 1190  
**Spain** +34 914 845 965  
**Sweden** +46 8 556 468 00  
**Switzerland** +41 61 716 77 00  
**UK** +44 1442 233555  
**USA** +1 800 532 4752

**Thermo**  
SCIENTIFIC

A Thermo Fisher Scientific Brand