

# Metabolomic Profiling of Food Diets Using Ion Chromatography with High Resolution Orbitrap Mass Spectrometry

Terri T. Christison<sup>1</sup>, Junhua Wang<sup>2</sup>, Linda Lopez<sup>1</sup>, Ralf Tautenbaum<sup>2</sup>, and David Peake<sup>2</sup>.

<sup>1</sup>Thermo Fisher Scientific, 11214 Oakmead Parkway, Sunnyvale, CA, USA 94088

<sup>2</sup>Thermo Fisher Scientific, 2355 River Oaks Parkway, San Jose, CA, USA, 95134

## ABSTRACT

Previous results demonstrated that ion chromatography (IC) had superior sensitivity and separation over other liquid chromatography methods for small polar metabolites when coupled to a high resolution accurate (HRAM) mass spectrometer using Thermo Scientific™ Orbitrap™ technology mass spectrometers.<sup>1</sup> Over 1028 features were found in the food samples, of which ~180 small polar compounds were identified using IC-HRAM. The food samples were complex with complex matrices, however the samples had significant differences. Many of these compounds are also TCA metabolites. Only a small portion of the results are shown. The data was analyzed with Thermo Scientific data analysis tools.

## INTRODUCTION

The analysis of small polar metabolites is critical to understanding many of the metabolic disturbances as a result of disease, lifestyle, and diet. In this experimental design, UC Davis Center of Metabolomics generated three food samples representing three different diets: low animal protein (Davis), high fish and vegetables (California), and high beef, high sugar, and high fat (USA). Recently it has been shown that ion chromatography (IC) when combined with HRAM MS can provide superior separations and sensitivity for polar ionic species as compared to other LC methods. These results have been demonstrated using a capillary IC and replicated using a higher throughput IC system.<sup>2,3</sup> In this study these food samples were analyzed using IC-Orbitrap MS and processed using Thermo Scientific™ Compound Discoverer™ 2.0 software.

## MATERIALS AND METHODS

### Sample Preparation

West Coast Metabolomics Center generated the three homogenized, freeze-dried (at -80 °C) food samples. Two mg of the lyophilized samples (equivalent to 20 mg of food) were extracted with 1 mL of degassed, cold 80/20 % methanol/deionized water and agitated mechanically for 5 min. The samples were freeze dried at -80 °C and upon receipt, were reconstituted with 100  $\mu$ L of 10% methanol. Reconstituted in 100  $\mu$ L of MeOH/H<sub>2</sub>O (10:90).

Table 1. Components of Three Types of Food Samples

Davis	California	USA
White rice	Salmon	Hamburger bun
Fried egg	Brown blended rice	Beef
Sesame seeds	Sliced almonds	Cheese
Spicy sauce	Lemon slices	Bacon
Tofu	Steamed carrots	Lettuce
Spinach	Steamed broccoli	Pickles
Bean sprouts	Steamed onions	Tomatoes
Soy sprouts	Steamed cabbage	Ketchup
Carrots	Steamed red bell pepper	French fries
Zucchini	Grapes, blueberries	Baked beans
Radish	Yogurt	2 Chocolate chip cookies
Rice punch	Green tea	Regular Cola

### Ion Chromatography

Thermo Scientific™ Dionex™ ICS-5000+ HPIC™ dual IC system with Thermo Scientific™ Dionex™ AS-AP autosampler (see Figure 1).

The IC conditions are shown in Table 2.

### Mass Spectrometry

High Field Thermo Scientific™ Q Exactive™ HF Hybrid Quadrupole-Orbitrap™ mass spectrometer (see Figure 1).

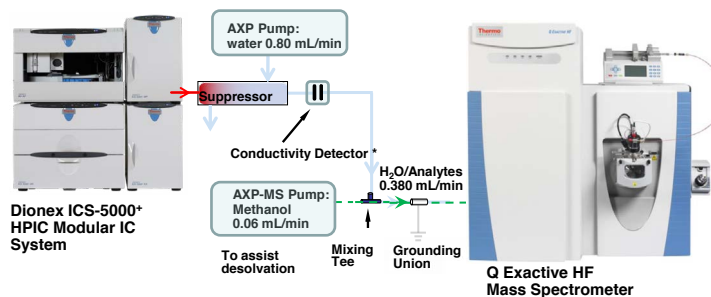
ESI negative mode. Full mass scan: m/z 67-1000, resolution: 120,000 (FWHM) at m/z 200, automatic gain control (AGC) target: 1x10<sup>6</sup> ions, maximum ion injection time (IT): 50 ms. Data dependent MS<sup>2</sup>, Top 10, AGC 2e5, IT 100ms, Underfill 1%.

Source ionization parameters: spray voltage: 3.5kV; transfer temp.: 320 °C; S-Lens level: 50; heater temp.: 325 °C; Sheath gas: 36; Aux gas: 5.

Table 2. Ion Chromatography Conditions

Columns	Thermo Scientific™ Dionex™ IonPac™ AS11HC-4 $\mu$ m guard and separation, 2 mm i.d.
Gradient	25–95 mM KOH in 30 min
Eluent Source	Thermo Scientific™ Dionex™ EGC 500 KOH cartridge with Thermo Scientific™ Dionex™ CR-ATC 500 trap column
Flow	0.38 mL/min
Temp	30 °C
Inj. Vol	2 $\mu$ L of 5 $\mu$ L loop
Desalter	Thermo Scientific™ Dionex™ AERS™ 500 suppressor in external water mode (Thermo Scientific™ AXP-MS pump at 0.8 mL/min)
Makeup Solvent	Methanol at 0.06 mL/min (AXP-MS pump) to low volume mixing tee (I dex, P/N P-890). See Figure 1.

Figure 1. Flow Diagram of Dionex ICS-5000+ HPIC dual IC to Q Exactive HF MS



### Software and Data Analysis

The instruments are managed by new interface software (Thermo Scientific™ Standard Instrument Integration (SII)) for Xcalibur coupling Thermo Scientific™ Xcalibur™ and Thermo Scientific™ Chromeleon™ 7 platform.)

Differential analysis of profiling data and PCA plots were performed using Compound Discoverer 2.0 software (Figure 2).

Figure 2. Data Analysis Flow Path for Compound Discoverer Software

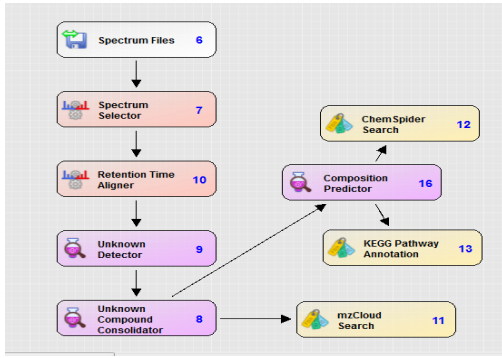
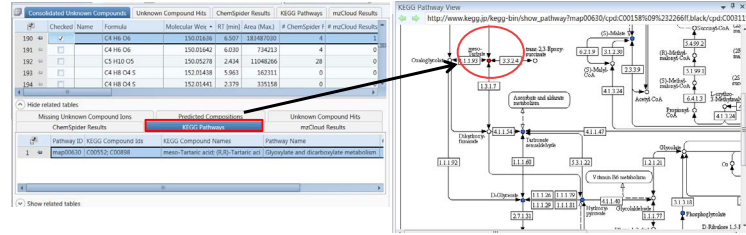
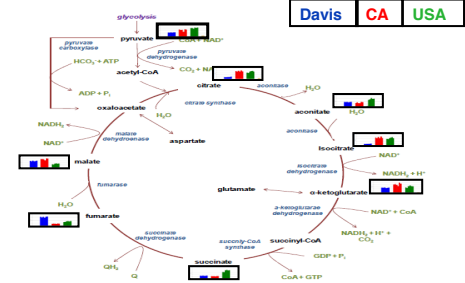


Figure 3F. Compound Discoverer software links metabolite to KEGG Pathway



Many of the small polar compounds found would be TCA metabolites. As an illustration of IC-HRAM analysis coverage, these compounds are shown in Figure 4.

Figure 4. Identified features in foods samples that are also TCA metabolites



RESULTS

Table 3 and Figures 3A and 3B show the differential analysis of three diets and significant components. In Figure 3C, the data point in Figure 3B (red arrow), is listed in Consolidated Unknown Compounds by Compound Discoverer. Linking automatically to mzCloud (Figures 3C and 3E), tartrate is identified and confirmed by comparing the MS/MS spectra with mzCloud library (Figure 3E). Tartrate results are displayed in each sample and diet (Figure 3D.) Figure 3F uses Compound Discoverer to link tartrate into the KEGG Pathway.

Table 3. Comparing the features found for all three diets

Groups (p < 0.01)	IC-MS (1028)
Davis CA	118
Davis USA	104
CA Davis	373
USA Davis	294

FIG. 3C. PCA Results show significant differences

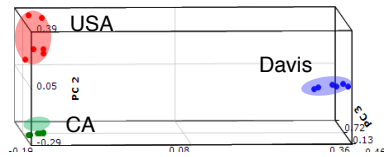


Figure 3B. Volcano plot in Compound Discoverer software. Further analysis is done on red dot (arrow)

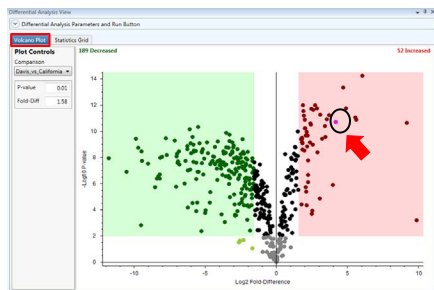


Figure 3C. mzCloud Results Identifies Succinic Acid

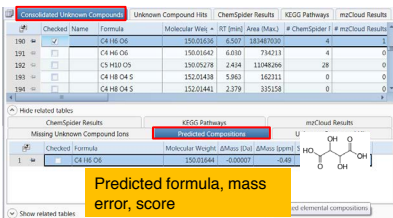


Figure 3D. Compound Discover software compares Tartaric Acid presence in three diets

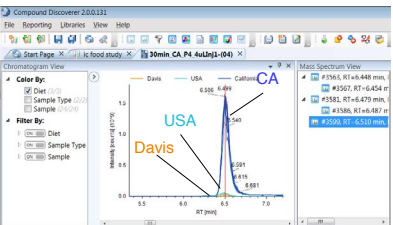
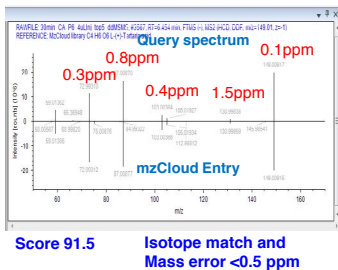
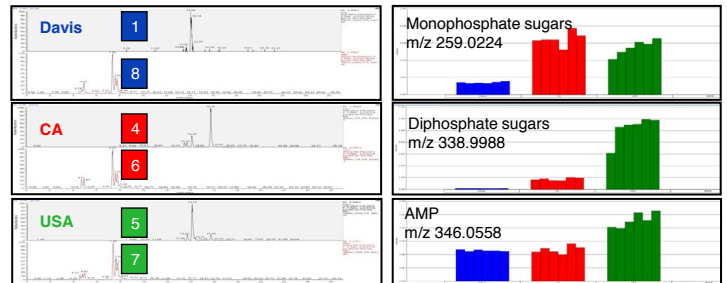


Figure 3E. Compound Discover software Query spectrum with mzCloud reference entry



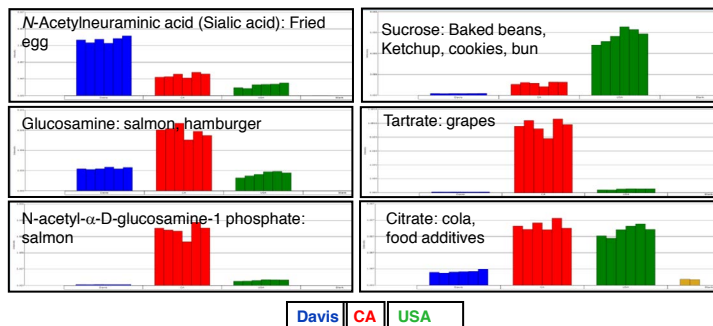
Monophosphate and diphosphate sugars and nucleotides, such as AMP are also well resolved and easily detected by IC-HRAM (Figure 5). These compounds are typically difficult to resolve by HILIC and RP chromatography methods.<sup>1</sup>

Figure 5. Data Analysis Flow Path for Compound Discoverer software



The three food groups were significantly different. Six examples are shown in Figure 6. For example, a sialic acid compound is attributed to the fried egg in the Davis sample; sucrose is attributed to the sweet items in the USA (Coke typically contains high fructose corn syrup); Tartrate is the characteristic acid in grapes; glucosamine compounds are attributed to the salmon; Citrate is a natural compound and a food additive.

Figure 6. Data Analysis Flow Path for Compound Discoverer software



## CONCLUSIONS

- IC coupled with Orbitrap HRAM of the Q Exactive HF Orbitrap MS instruments provides a superior method to resolve small polar metabolites.
- The food samples were complex, only a small portion of the results are shown here.
- The food groups had significant differences that could impact metabolomics cycles and impact health.

## REFERENCES

- Wang, J., Christison, T.; et al. *Anal. Chem.*, **2014**, *86* (10), 5116–5124.
- Hu, Shen; Wang, J., et al. *Anal. Chem.*, **2015** DOI:10.1021/acs.analchem.5b01350
- Wang, J.; Christison, et al. AN622. Thermo Fisher Scientific 2015.

## ACKNOWLEDGEMENTS

We would like to thank Dr .Oliver Fiehn and UC Davis Center of Metabolomics for providing these food samples and developing and managing this comparison study.

[www.thermofisher.com](http://www.thermofisher.com)

©2016 Thermo Fisher Scientific Inc. All rights reserved. ChemSpider is a trademark of ChemZoo, Inc. ISO is a trademark of the International Standards Organization. All other trademarks are the property of Thermo Fisher Scientific and its subsidiaries. This information is presented as an example of the capabilities of Thermo Fisher Scientific products. It is not intended to encourage use of these products in any manners that might infringe the intellectual property rights of others. Specifications, terms and pricing are subject to change. Not all products are available in all countries. Please consult your local sales representative for details.

**Africa** +43 1 333 50 34 0  
**Australia** +61 3 9757 4300  
**Austria** +43 810 282 206  
**Belgium** +32 53 73 42 41  
**Brazil** +55 11 2730 3006  
**Canada** +1 800 530 8447  
**China** 800 810 5118 (free call domestic)  
 400 650 5118

**Denmark** +45 70 23 62 60  
**Europe-Other** +43 1 333 50 34 0  
**Finland** +358 10 3292 200  
**France** +33 1 60 92 48 00  
**Germany** +49 6103 408 1014  
**India** +91 22 6742 9494  
**Italy** +39 02 950 591

**Japan** +81 6 6885 1213  
**Korea** +82 2 3420 8600  
**Latin America** +1 561 688 8700  
**Middle East** +43 1 333 50 34 0  
**Netherlands** +31 76 579 55 55  
**New Zealand** +64 9 980 6700  
**Norway** +46 8 556 468 00

**Russia/CIS** +43 1 333 50 34 0  
**Singapore** +65 6289 1190  
**Sweden** +46 8 556 468 00  
**Switzerland** +41 61 716 77 00  
**Taiwan** +886 2 8751 6655  
**UK/Ireland** +44 1442 233555  
**USA** +1 800 532 4752  
 PN64744-EN 0616S

**Thermo**  
 SCIENTIFIC

A Thermo Fisher Scientific Brand