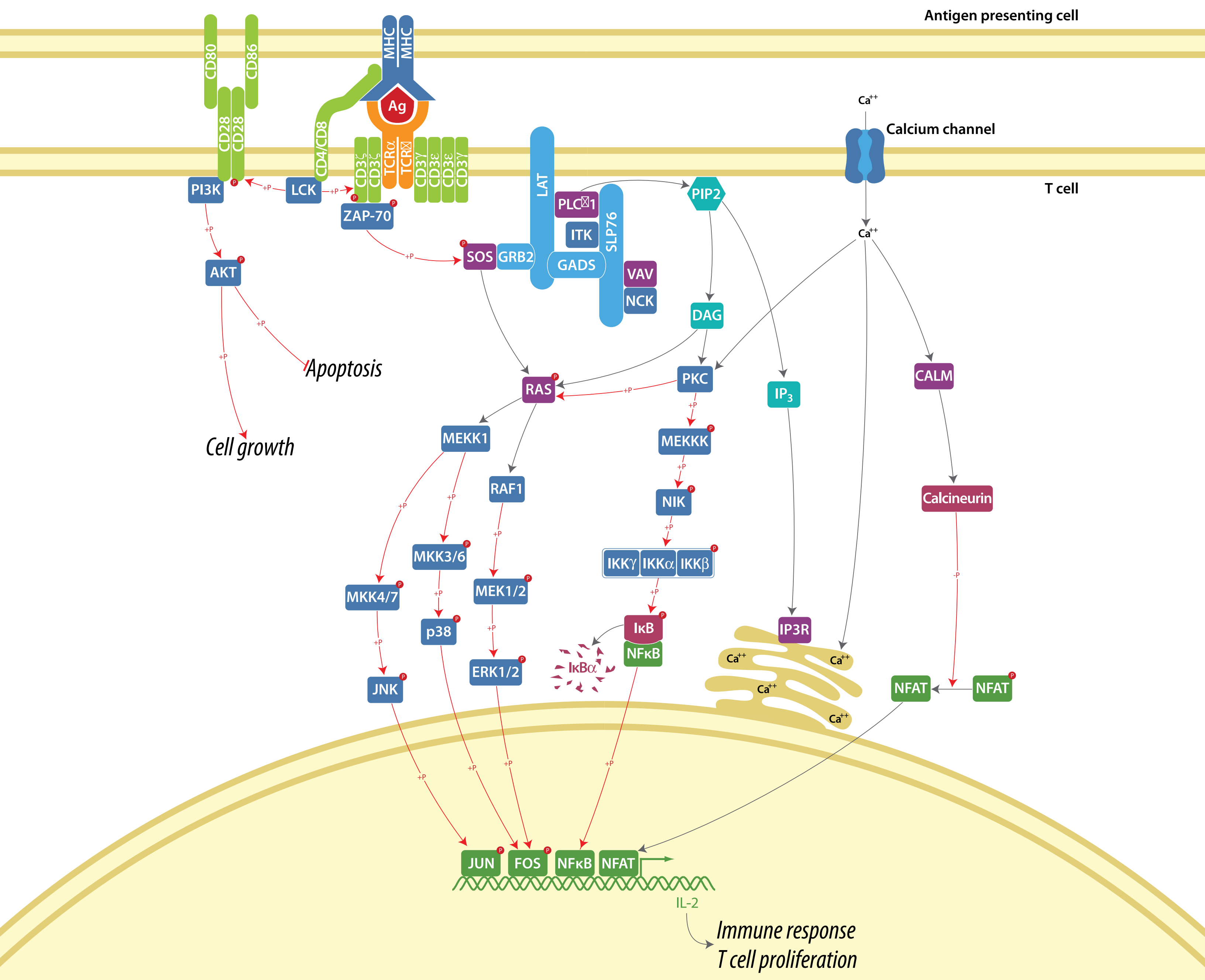


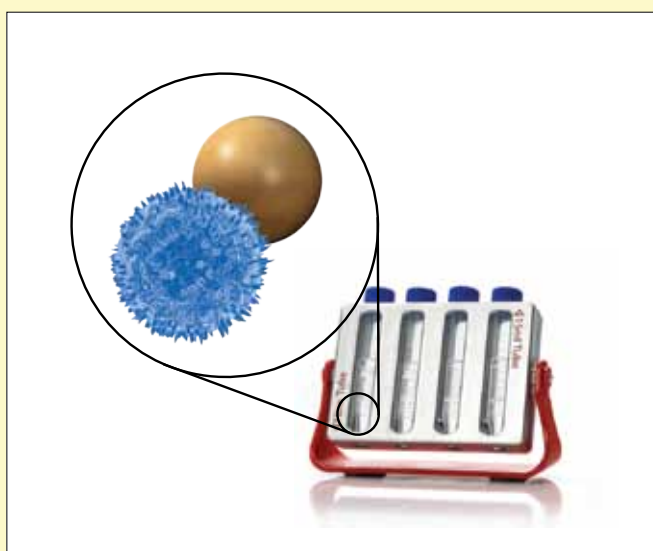
# T cell proliferation and the immune response



## Isolate

Product	Cat. no.
Dynabeads® FlowComp™ Human CD4	113-61D
Dynabeads® FlowComp™ Mouse CD4	114-61D
Dynabeads® FlowComp™ Human CD3	113-65D
Dynabeads® FlowComp™ Human CD8	113-62D
Dynabeads® FlowComp™ Mouse Pan T	114-65D
Dynabeads® FlowComp™ Mouse CD8	114-62D
Dynabeads® Untouched™ Human T Cells	113-44D
Dynabeads® Untouched™ Human CD4	113-46D
Dynabeads® Untouched™ Human CD8	113-48D
Dynal® Mouse T Cell Negative Isolation Kit	114-13D
Dynal® Mouse CD4 Cell Negative Isolation Kit	114-15D
Dynal® Mouse CD8 Cell Negative Isolation Kit	114-17D
Human Regulatory CD4+CD25+ T Cell Kit	113-63D
FlowComp™ Mouse CD4+CD25+ Treg Cells	114-63D
Dynabeads® FlowComp™ Flexi	110-61D

For an overview of Dynal® products, visit [www.invitrogen.com/dynabeads](http://www.invitrogen.com/dynabeads).



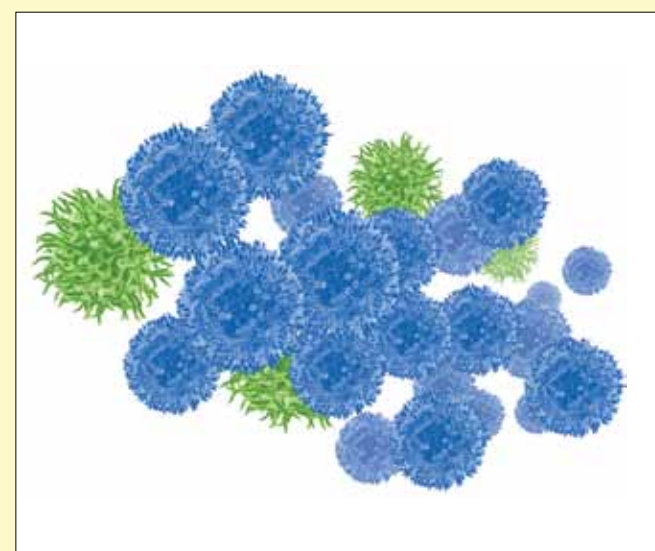
## Stimulate

Product	Cat. no.
Optmizer™ T Cell Expansion SFM	A1048501
AIM V® Medium Liquid	0870112DK
AIM V® Medium Liquid (research grade)	12055083
Dynabeads® Human T-Activator CD3/CD28 0.4 mL	111-61D
Dynabeads® Mouse T-Activator CD3/CD28 0.4 mL	114-56D

For more information about T-Activator, visit [www.invitrogen.com/t-activator](http://www.invitrogen.com/t-activator).

Human IL-2	PHC0026
Mouse IL-2	PMC0024
Human IFN-gamma	PHC4031
Mouse IFN-gamma	PMC4034
Human TNF-alpha	PHC3015
Mouse TNF-alpha	PMC3014
Human IL-4	PHC0044
Mouse IL-4	PMC0045
Human IL-6	PHC0065
Mouse IL-6	PMC0065
Human IL-10	PHC0105
Mouse IL-10	PMC0104

For a full listing of growth factors, visit [www.invitrogen.com/growthfactors](http://www.invitrogen.com/growthfactors).



## Analyze

Product	Cat. no.
Click-iT® EdU Pacific Blue™ Flow Cytometry Assay Kit	A10034
Human IL-4 ELISA Kit	KHC0041
Human IL-6 ELISA Kit	KHC0061
Human IL-10 ELISA Kit	KHC0101
Human IFN-gamma	KHC4021
Human TNF-alpha	KHC3011
CellTrace™ CFSE Cell Proliferation Kit	C34554
SYTOX® Red Dead Cell Stain	S34859
SYTOX® AADvanced™ Dead Cell Stain	S10274
Human CD3-488	MHCD0320
Mouse CD3-488	HM3420
Human CD4-PE	MHCD0404
Mouse CD4-PE	MCD0404
Vybrant® LIVE/DEAD™ Fixable Aqua Dead Cell Stain	L34957
Vybrant® LIVE/DEAD™ Fixable Violet Dead Cell Stain	L34955
Vybrant® LIVE/DEAD™ Fixable Red Dead Cell Stain	L23102

View our extensive portfolio of ELISA and Luminex® assays at [www.invitrogen.com/immunoassays](http://www.invitrogen.com/immunoassays).

For a full listing of flow cytometry reagents, visit [www.invitrogen.com/flowcytometry](http://www.invitrogen.com/flowcytometry).

