

# Reliable Quantitation of 52 L-Amino Acids in Human Plasma for Clinical Research by LC-MS/MS

<sup>1</sup>Stephanie Samra, <sup>2</sup>Valérie Thibert, <sup>2</sup>Claude Netter <sup>1</sup>Thermo Fisher Scientific, San Jose, CA, USA; <sup>2</sup>Thermo Fisher Scientific, Courtabouef, France

## ABSTRACT

### Summary

An analytical method was developed that quantitatively detects 52 L-amino acids in human plasma for clinical research. An offline protein precipitation of the plasma sample without derivatization was performed prior to dilution with internal standard and followed by LC-MS/MS analysis with a triple quadrupole mass spectrometer. Separation and quantitation of compounds were performed with an 18-minute reverse phase gradient and internal or external calibration of eight standards ranging from 0.1 to 500 µM. Problematic issues such as observed carryover of the basic amino acids as well as retention time shifts were addressed by optimizing the LC method.

### Methods

Plasma samples were protein precipitated and diluted with an internal standard solution prior to injection onto an LC-MS/MS triple quadrupole mass spectrometer. Separation of compounds was performed with an 18-minute aqueous/organic reverse phase gradient. Issues with carryover that originated from the mobile phases were observed in blank samples and were addressed with the use of a cation exchange trap column for their removal. Retention time shifts were kept to a minimum for excellent reproducibility by limiting pH differences to < 0.1 batch to batch.

### Results

The lower limit of quantification (LLOQ) for each amino acid was set to the lowest calibration standard analyzed that yielded < 20 % inaccuracy and < 20% CV for 3 replicate injections of the same standard.



Figure 1. Thermo Scientific™ Vanquish™ Flex and Thermo Scientific™ TSQ Quantis™ Triple Quadrupole Mass Spectrometer

## INTRODUCTION

Amino acids are the building blocks of proteins and intermediaries to many biochemical pathways. They play an important role in biochemical regulation and any abnormalities in abundance may be indicative of greater metabolic issues or inherited disorders. Here we present a novel workflow that simplifies sample preparation by eliminating the use of a derivatization reagent to detect 52 L-amino acids for clinical research in human plasma with excellent reproducibility in 18 minutes.

Current methods most widely accepted in the routine clinical research laboratory require several steps which are highly cumbersome and time consuming. The method presented is simple, straightforward, and reproducible.

## MATERIALS AND METHODS

### Sample Preparation

- All labeled and unlabeled standards were purchased from Cambridge Isotope Laboratories Inc., Sigma Aldrich, or Wako Pure Chemical Industries. Standard solutions were prepared at the appropriate concentrations and used for dilution of the sample prior to injection onto the LC-MS/MS system.
- 100 µL of calibrator, control, or plasma were mixed with 100 µL of precipitation reagent and then vortexed for 60 seconds, refrigerated for 30 minutes, and centrifuged at 12000 rpm for 5 minutes. The supernatant (50 µL) was added to 200 µL of the dilution solution containing both labeled and unlabeled standards. Samples were vortexed and then injected onto the LC-MS/MS system.

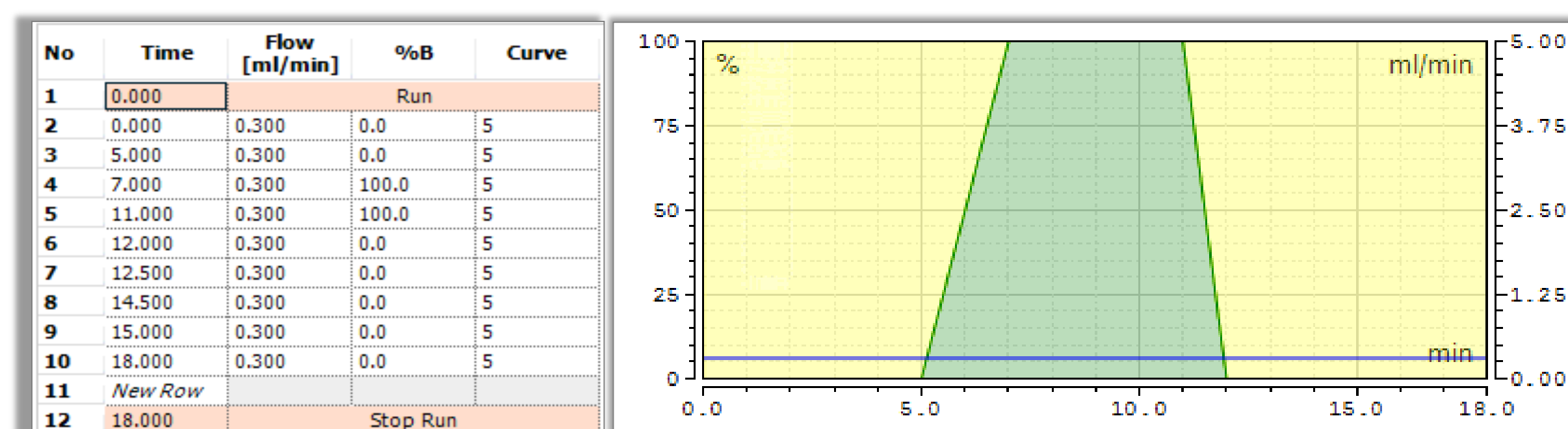
Internal Standards	
1	Alanine 13C3 15N1
2	β-Alanine 13C3 15N1
3	α-Aminoadipic Acid 13C3 15N1
4	α-Aminobutyric Acid 13C3 15N1
5	β-Aminoisobutyric Acid 13C3 15N1
6	γ-Aminobutyric Acid 13C3 15N1
7	5-Aminolevulinic Acid 13C3 15N1
8	Asparagine 13C3 15N1
9	Arginine 13C3 15N1
10	Argininosuccinic Acid 13C3 15N1
11	Aspartic Acid 13C3 15N1
12	Carnitine 13C3 15N1
13	Citrulline 13C3 15N1
14	Phosphoethanolamine 13C3 15N1
15	Cystathionine 13C3 15N1
16	Cysteine 13C3 15N1
17	Cysteine-Homocysteine Disulfide 13C3 15N1
18	Cysteine 13C3 15N1
19	Ethanolamine 13C3 15N1
20	Serine 13C3 15N1
21	Glutamic Acid 13C3 15N1
22	Glutamine 13C3 15N1
23	Glutathione Reduced 13C3 15N1
24	Glycine 13C3 15N1
25	Homocysteine 13C3 15N1
26	Homocystine 13C3 15N1
27	Homocysteine 13C3 15N1
28	Hydroxylysine 13C3 15N1
29	Hydroxyproline 13C3 15N1
30	Isoleucine 13C3 15N1
31	Allo-Isoleucine 13C3 15N1
32	Kynurenine 13C3 15N1
33	Leucine 13C3 15N1
34	Lysine 13C3 15N1
35	Methionine 13C3 15N1
36	1-Methylhistidine 13C3 15N1
37	3-Methylhistidine 13C3 15N1
38	Ornithine 13C3 15N1
39	Phenylalanine 13C3 15N1
40	Phosphoethanolamine 13C3 15N1
41	Phosphoserine 13C3 15N1
42	Pipecolic Acid 13C3 15N1
43	Proline 13C3 15N1
44	Saccharosine 13C3 15N1
45	Sarcosine 13C3 15N1
46	Serine 13C3 15N1
47	Sulfocysteine 13C3 15N1
48	Taurine 13C3 15N1
49	Threonine 13C3 15N1
50	Tryptophan 13C3 15N1
51	Tyrosine 13C3 15N1
52	Valine 13C3 15N1
53	Valine 13C3 15N1
54	Valine 13C3 15N1
55	Valine 13C3 15N1
56	Valine 13C3 15N1
57	Valine 13C3 15N1
58	Valine 13C3 15N1
59	Valine 13C3 15N1
60	Valine 13C3 15N1
61	Valine 13C3 15N1
62	Valine 13C3 15N1
63	Valine 13C3 15N1
64	Valine 13C3 15N1
65	Valine 13C3 15N1
66	Valine 13C3 15N1
67	Valine 13C3 15N1
68	Valine 13C3 15N1
69	Valine 13C3 15N1
70	Valine 13C3 15N1
71	Valine 13C3 15N1
72	Valine 13C3 15N1
73	Valine 13C3 15N1
74	Valine 13C3 15N1
75	Valine 13C3 15N1
76	Valine 13C3 15N1
77	Valine 13C3 15N1
78	Valine 13C3 15N1
79	Valine 13C3 15N1
80	Valine 13C3 15N1
81	Valine 13C3 15N1
82	Valine 13C3 15N1
83	Valine 13C3 15N1
84	Valine 13C3 15N1
85	Valine 13C3 15N1
86	Valine 13C3 15N1
87	Valine 13C3 15N1
88	Valine 13C3 15N1
89	Valine 13C3 15N1
90	Valine 13C3 15N1
91	Valine 13C3 15N1
92	Valine 13C3 15N1
93	Valine 13C3 15N1
94	Valine 13C3 15N1
95	Valine 13C3 15N1
96	Valine 13C3 15N1
97	Valine 13C3 15N1
98	Valine 13C3 15N1
99	Valine 13C3 15N1
100	Valine 13C3 15N1

Table 1. List of 52 quantifiable L-Amino Acids. The listed amino acids are detectable in human plasma using this method.

### Liquid Chromatography Conditions

- Mobile phases consisted of an organic/aqueous composition.
- Columns used for this method consisted of a trap column to remove basic amino acids seen consistently in the background, a guard column to increase column lifetime, and an analytical column for amino acid separation.
- Column Temperature: 30 ° C
- Injection volume: 4 µL

Figure 1. Liquid chromatography gradient used for analysis.



### Conditions for Thermo Scientific TSQ Quantis Mass Spectrometer

Table 2. HESI Source Parameters.

HESI Source Parameters			
Polarity	Positive	Sheath Gas	45
Spray Voltage	3.5 kV	Auxiliary Gas	15
Capillary Temp	270 °C	Sweep Gas	0
Vaporizer Temp	370 °C	Source Fragmentation	15.0 V

Table 3. Scan Properties used for SRM experiment type.

SRM Scan Properties			
Use Cycle Time	True	Collision Gas Pressure	1.5 mTorr
Cycle Time	0.4 sec	Use Calibrated RF	False
Chrom Filter	3.0 sec	Q1 Resolution (FWHM)	0.7
Data Mode	centroid	Q3 Resolution (FWHM)	0.7

## RESULTS

### SRM Table and Calibration Curves

Table 4. Amino acids quantitated with retention times, calibration R<sup>2</sup> values, calibration ranges, calibration type, and calibration weighting. Limit of Quantification (LOQ) was determined as the lowest value in the calibration curve giving <20%Diff and <20% CV for 3 injections of calibrators in neat solution.

Amino Acid	Precursor (m/z)	Product (m/z)	RT	R <sup>2</sup>	Range µmol/L	Type	Weighting
1-methylhistidine	170.12	124.11	10.41	0.9915	2-200	Linear	1/X
3-methylhistidine	170.12	126.1	10.27	0.9945	2-100	Linear	1/X
alanine	90.274	44.44	2.03	0.9969	20-500	Linear	1/X
α-aminoadipic	162.152	98.22	2.35	0.9949	5-250	Linear	1/X
α-aminobutyric	104.213	58.33	2.43	0.9819	10-250	Linear	1/X
anserine	241	109	10.93	0.9966	5-200	Linear	1/X
arginine	175.12	70.26	12.12	0.9912	5-200	Linear	1/X
asparagine	133.2	87.15	1.9	0.9977	20-500	Linear	1/X
aspartic acid	134.11	74.22	2.03	0.9949	10-500	Linear	1/X
β-aminobutyric acid	104.252	86.15	4.22	0.9942	5-500	Linear	1/X
carnosine	227.183	110.17	11.21	0.9953	5-200	Linear	1/X
citrulline	176.213	159.04	2.87	0.9962	5-200	Linear	1/X
cystathionine	223.152	134.11	8.94	0.9985	2.5-250	Linear	1/X
cystine	241.1	152	8.71	0.9973	5-500	Linear	1/X
ethanolamine	62.365	62.37	3.75	0.9938	10-200	Linear	1/X
γ-aminobutyric acid	104.252	87.15	4.69	0.9968	5-200	Linear	1/X
glutamic acid	148.1	84.15	2.11	0.9968	5-500	Linear	1/X
glutamine	147.12	130.04	1.98	0.9926	5-500	Linear	1/X
glycine	76.3	76.3	2.16	0.9989	50-500	Linear	1/X
histidine	156.13	110.1	10.46	0.9594	5-100	Linear	1/X <sup>2</sup>
hydroxylysine	163	128	10.15	0.9909	2-100	Linear	1/X <sup>2</sup>
isoleucine	132.18	69.26	3.52	0.9974	5-500	Linear	1/X
leucine	132.18	86.22	3.74	0.9917	20-200	Linear	1/X
lysine	147.17	84.22	10.49	0.9906	5-500	Linear	1/X
methionine	150.098	133.07	3.08	0.9981	5-500	Linear	1/X
ornithine	133.243	70.26	10.22	0.9933	20-500	Quadratic	1/X
phenylalanine	166.12	103.17	6.85	0.9885	2-500	Linear	1/X <sup>2</sup>
phosphoethanolamine	142.07	44.44	1.56	0.9946	2.5-100	Linear	1/X
phosphoserine	186	88	3.72	0.9957	2.5-250	Linear	1/X
pipecolic acid	130.16	84.22	2.98	0.9987	10-500	Quadratic	1/X
proline	116.243	70.26	2.13	0.9942	5-500	Quadratic	1/X
serine	106.191	60.33	1.88	0.9982	20-500	Linear	1/X
sulfocysteine	202.091	120.06	6.44	0.9989	2-500	Linear	1/X
taurine	126.152	126.15	1.54	0.9917	10-100	Linear	1/X
threonine	120.16	74.28	1.89	0.9965	10-500	Linear	1/X
tryptophan	205.078	187.99	6.64	0.998	5-500	Linear	1/X
tyrosine	182.078	136.04	5.95	0.9995	5-500	Linear	1/X
valine	118.17	72.26	2.62	0.9942	20-500	Linear	1/X

### Example Chromatograms

Figure 2. Aspartic Acid Mid Level QC with calibration curve. Chromatogram of quantitative and confirming ion peaks. Mid Level QC (200 µmol/L) was extracted using the protein precipitation method.

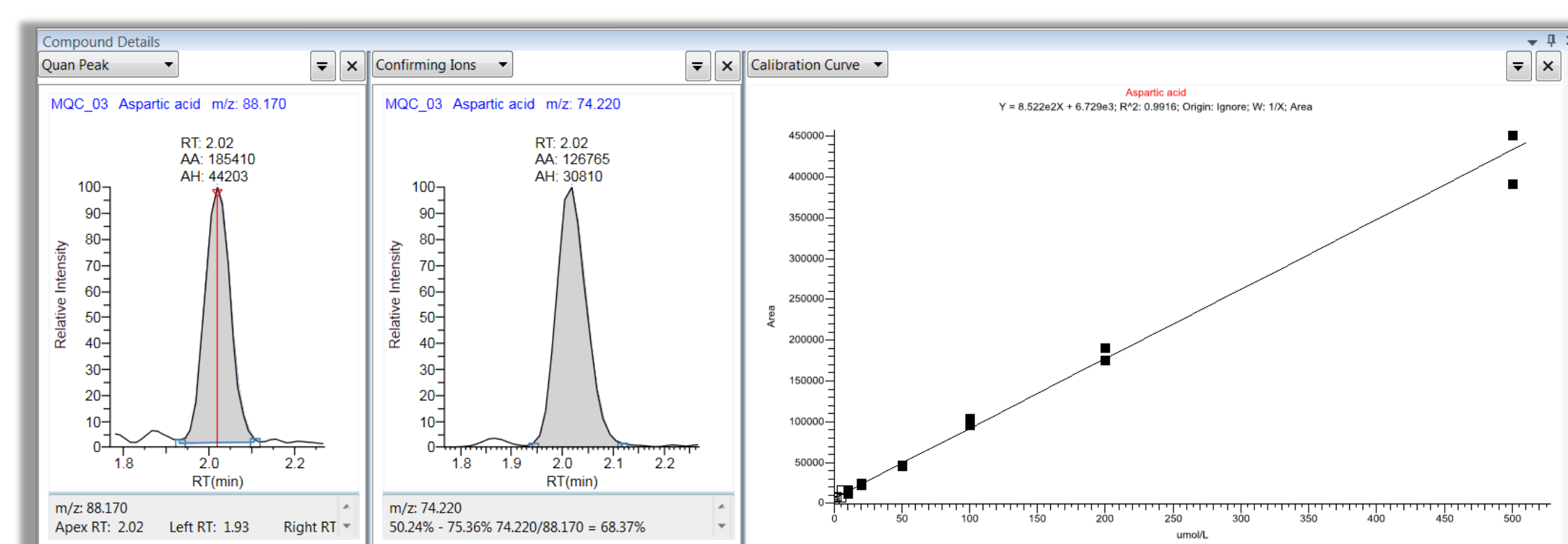


Figure 3. Pipecolic Acid Mid Level QC with calibration curve. Chromatogram of quantitative and confirming ion peaks. Mid Level QC (200 µmol/L) was extracted using the protein precipitation method.

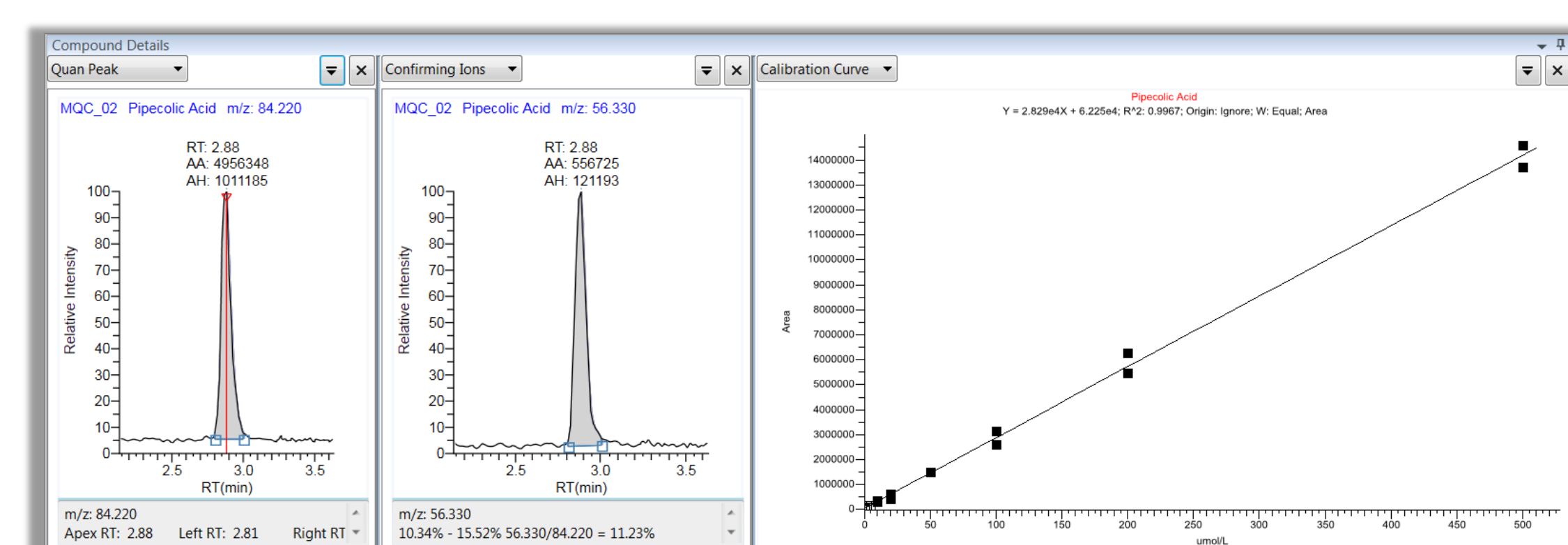


Figure 4. Phenylalanine Mid Level QC with calibration curve. Chromatogram of quantitative and confirming ion peaks. Mid Level QC (200 µmol/L) was extracted using the protein precipitation method.

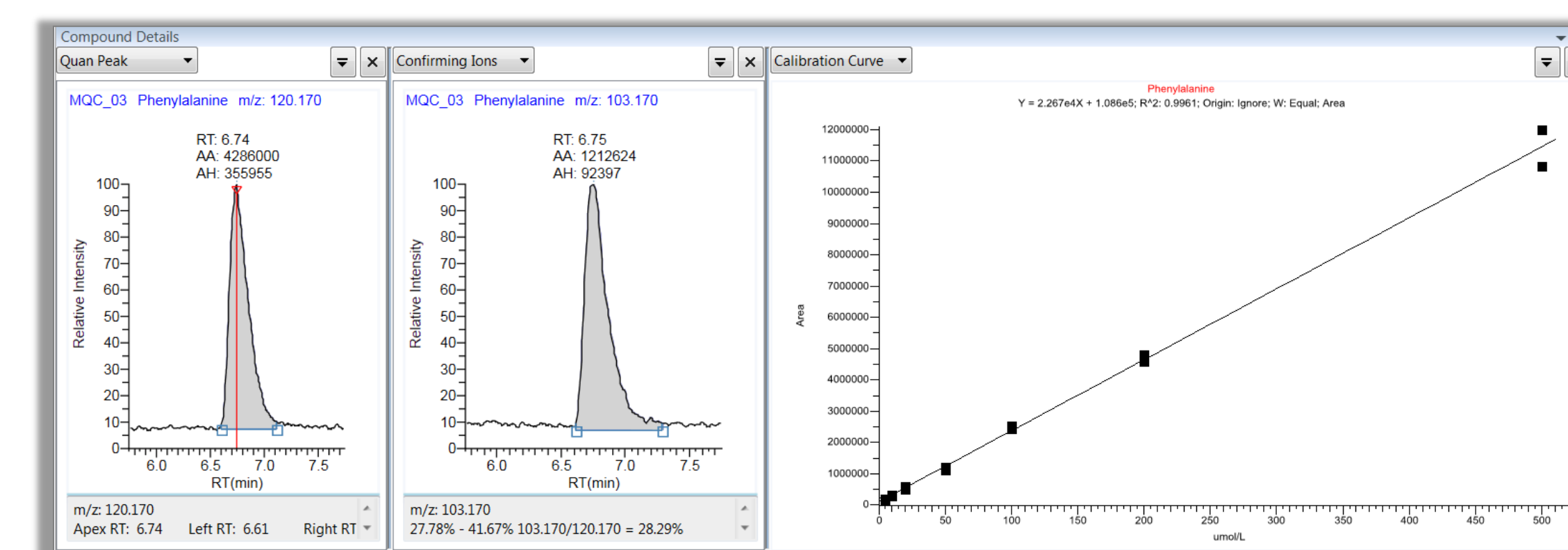


Figure 5. Tyrosine Mid Level QC with calibration curve. Chromatogram of quantitative and confirming ion peaks. Mid Level QC (200 µmol/L) was extracted using the protein precipitation method.

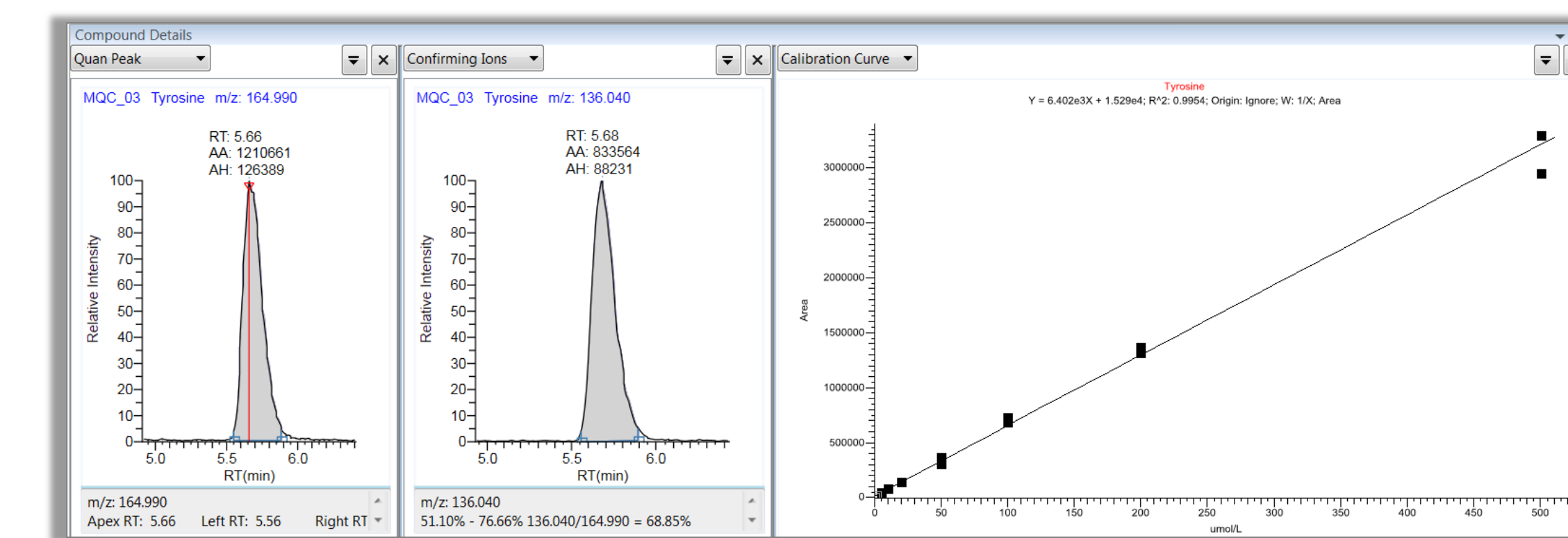
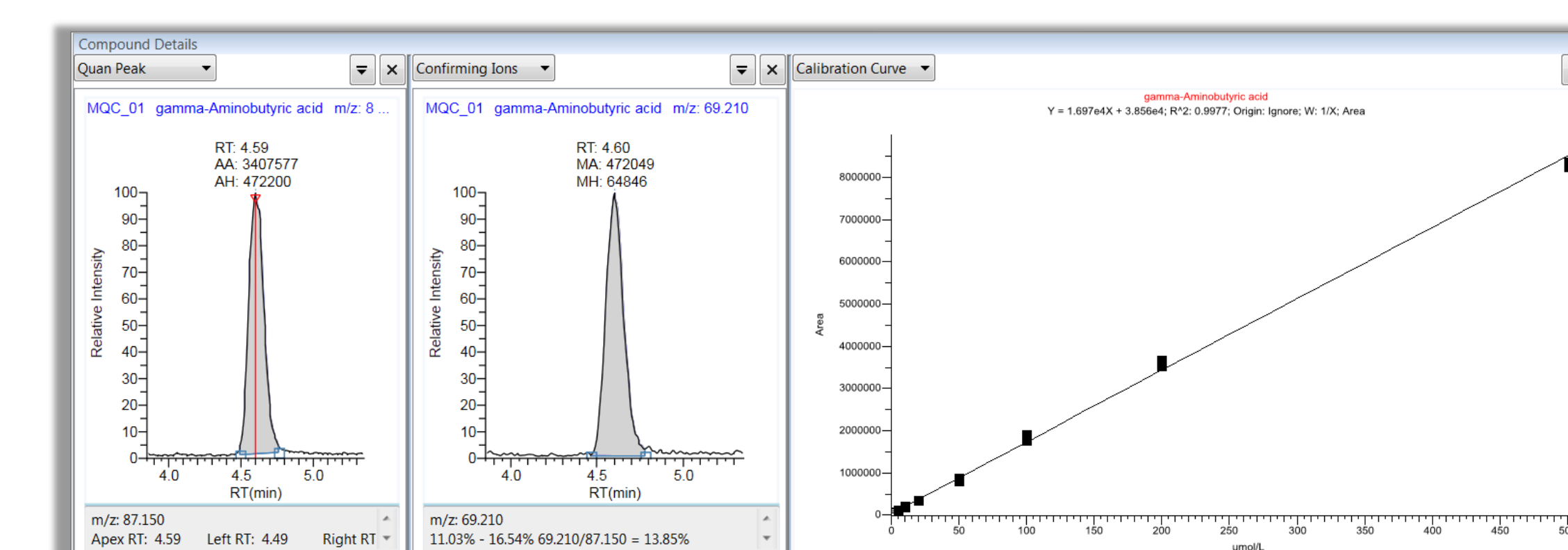


Figure 6. γ-Aminobutyric Acid Mid Level QC with calibration curve. Chromatogram of quantitative and confirming ion peaks. Mid Level QC (200 µmol/L) was extracted using the protein precipitation method.



### Repeatability

Table 5. Repeatability of Mid Level QC (Control L1), High Level QC (Control L2), and Plasma. Controls, quality controls, and plasma samples were prepared using the protein precipitation method. Calibration curves were determined as described in Table 4. Controls and Plasma samples were analyzed using five replicate injections with % RSD and % Difference reported here.

Amino Acid	Control L1				Control L2				Plasma	
	Theoretical µmol/L	AVG µmol/L	%RSD	%Diff	Theoretical µmol/L	AVG	%RSD	%Diff	AVG µmol/L	% RSD
Aspartic Acid	200	194	4.23	-3.06	500	474	2.67	-5.17	44.4	17.7
Pipecolic Acid	200	178	3.98	-11.0	500	493	3.35	-1.46	N/F	-
Phenylalanine	200	180	3.63	-9.86	500	460	3.39	-8.10	37.1	5.78
Tyrosine	200	176	4.77	-12.0	500	443	2.37	-11.4	44.0	3.39
γ-aminobutyric acid	200	188	4.28	-6.08	500	474	2.67	-5.17	N/F	-
alanine	200	180	6.13	-10.2	500	467	2.71	-6.63	30.3	12.3
α-Aminoadipic acid	100	86.7	5.79	-13.3	250	223	8.37	-10.6	5.20	8.23
α-Aminobutyric acid	100	88.9	9.33	-11.1	250	236	4.55	-5.52	N/F	-
β-Aminobutyric acid	200	175	2.18	-12.3	500	478	3.91	-4.31	N/F	-
citrulline	200	186	4.53	-7.03	500	442	3.97	-11.5	21.2	9.12

## CONCLUSIONS

- The elimination of derivatization simplifies the sample preparation and increases overall throughput with shorter preparation and analysis time, and also minimizes the need for costly reagents.
- Compared to lengthy HPLC methods, the LC-MS/MS method was able to simultaneously quantify 52 amino acids within 18 minutes.
- The method has been evaluated for 37 amino acids in neat standard and in human plasma, but will need to be further assessed for more extensive reproducibility and repeatability for all 52 amino acids.

## TRADEMARKS/LICENSING

© 2019 Thermo Fisher Scientific Inc. All rights reserved. All trademarks are the property of Thermo Fisher Scientific and its subsidiaries. This information is not intended to encourage use of these products in any manner that might infringe the intellectual property rights of others.

© 2019 Cambridge Isotope Laboratories Inc., Sigma Aldrich, and Wako Pure Chemical Industries. All rights reserved. All trademarks are the property of Cambridge Isotope Laboratories Inc., Sigma Aldrich, and Wako Pure Chemical Industries and their subsidiaries. This information is not intended to encourage use of these products in any manner that might infringe the intellectual property rights of others.

FOR RESEARCH USE ONLY. NOT FOR USE IN DIAGNOSTIC PROCEDURES.