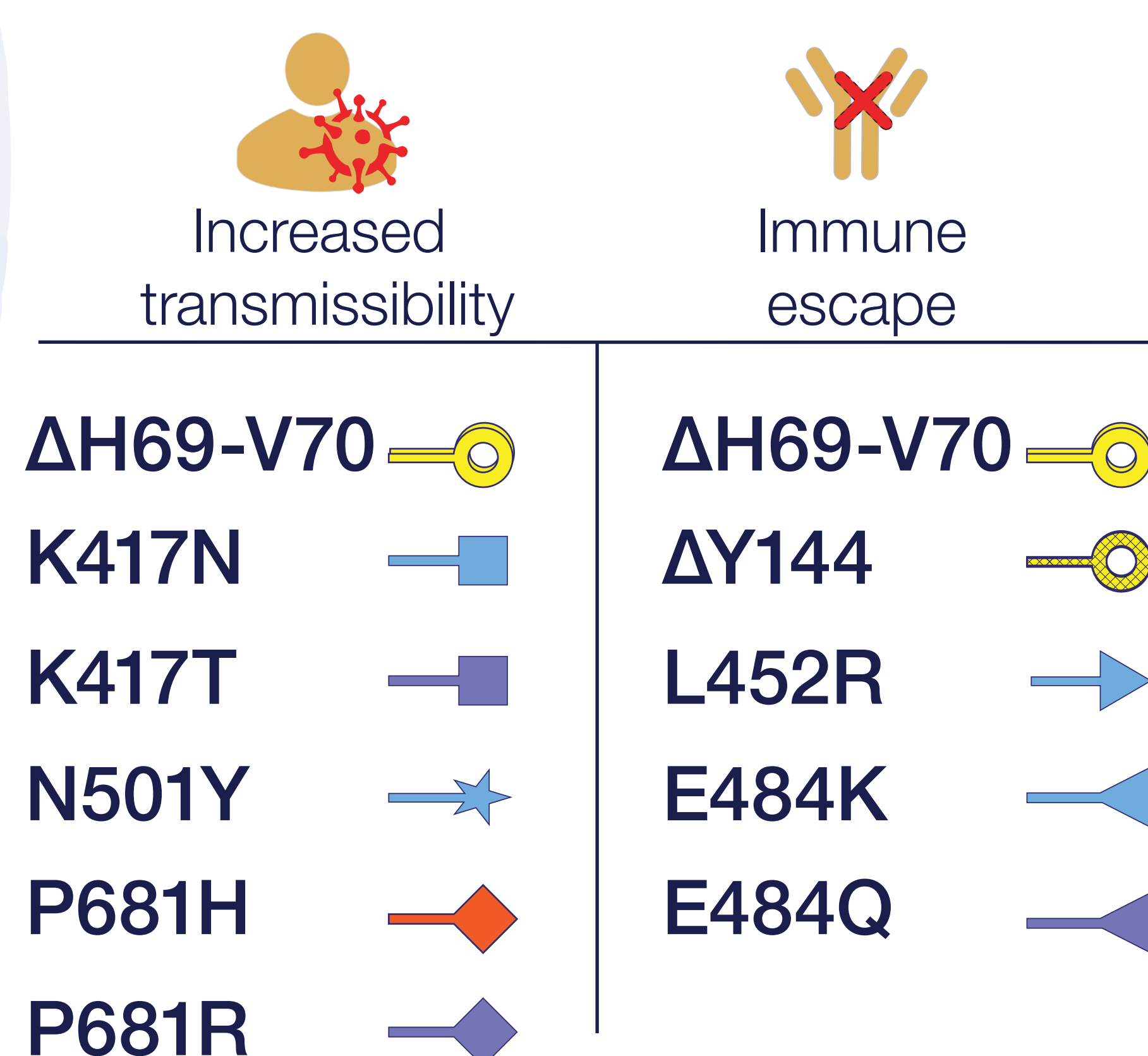


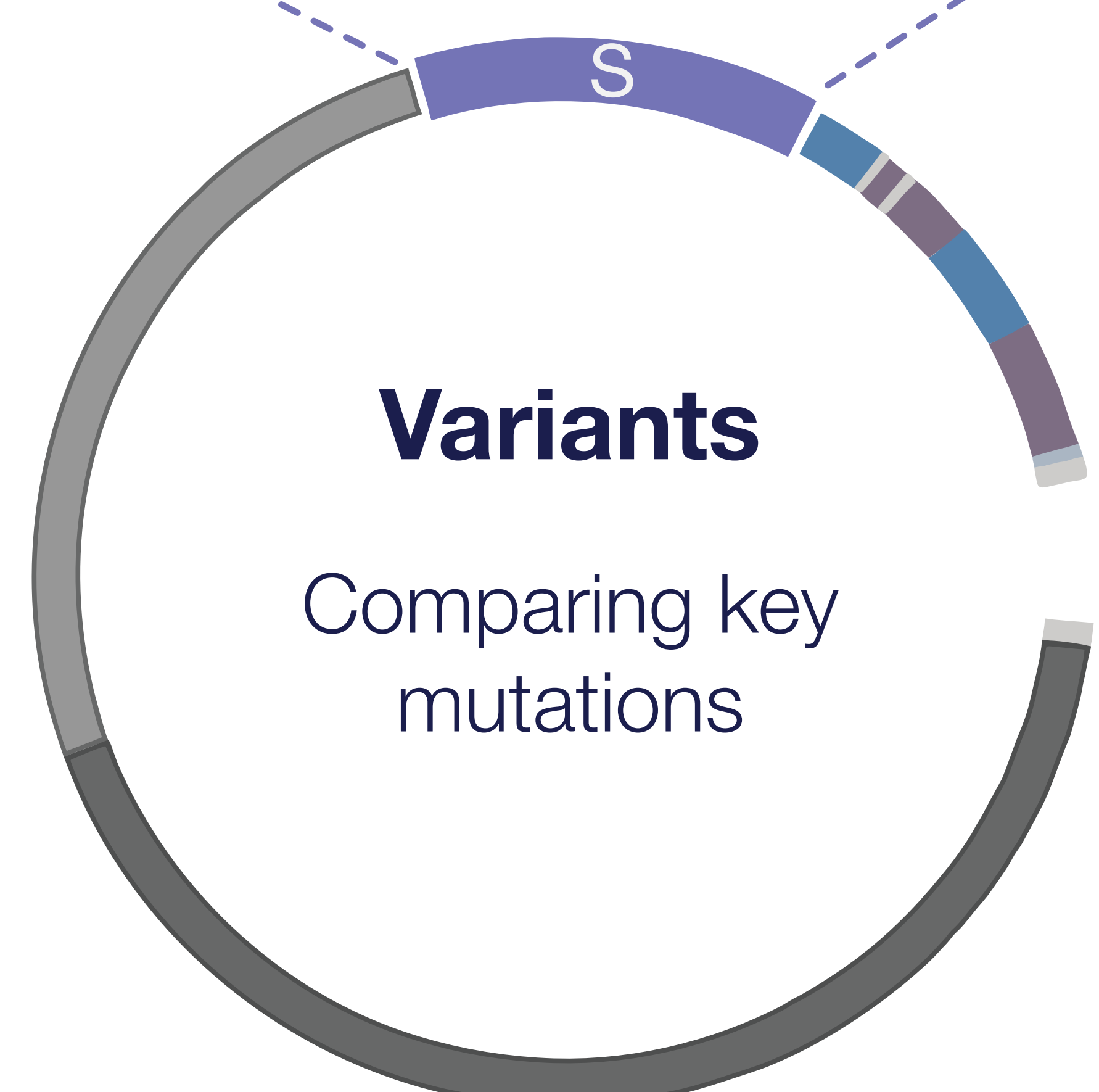
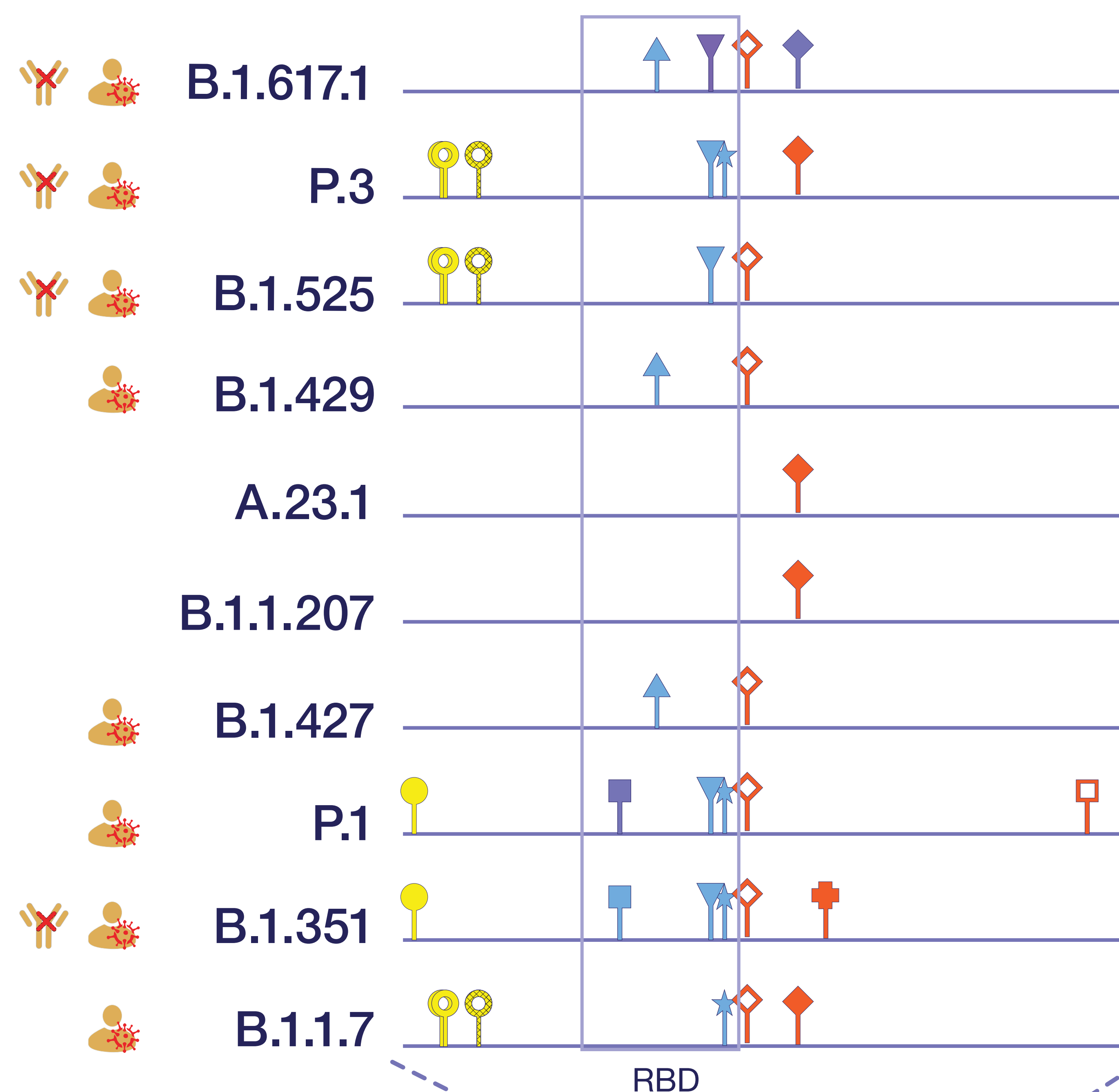
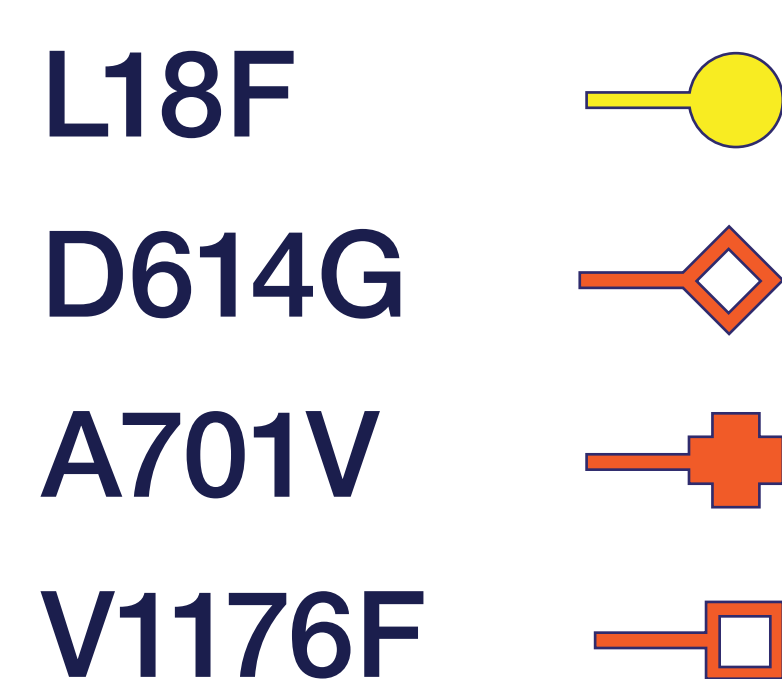
Discover emerging SARS-CoV-2 variants and mutations

Rapidly map and trace SARS-CoV-2 variants to discover key mutations that could cause immune escape and increase the transmissibility of the virus.

Key mutations



Mutations under investigation



Find out more at
thermofisher.com/sarscov2insight

SARS-CoV-2 RNA genomic organization

