



Laboratory software

# SampleManager LIMS, SDMS, LES and ELN software

A complete laboratory solution



## Transform your lab with comprehensive software solutions

Thermo Scientific™ SampleManager™ LIMS software manages your lab, data and procedural workflows, comprising laboratory information management system (LIMS), scientific data management system (SDMS), lab execution system (LES) and electronic lab notebook (ELN) capabilities. The software is capable of connecting with other enterprise systems, instruments, equipment and your customers, delivering increased compliance and productivity across your business.

For more than 30 years, SampleManager LIMS software has helped labs with compliance needs. As one of the most widely deployed LIMS in the world, SampleManager software is developed, designed and supported in an ISO 9001 environment. Through configuration, not customization, SampleManager software can meet your specific business processes and lab workflows.

# Bolstering productivity, data integrity and compliance

SampleManager LIMS software enables users to quickly build workflows which map to actual lab processes. Decisions and actions are automated, reducing the need for user intervention. Labs adhering to ALCOA++ guidelines can rely on the LIMS security, electronic signatures, and complete audit trail to enable compliance. SampleManager software works hand-in hand with enterprise systems including Enterprise Resource Planning (ERP), Manufacturing Execution System (MES) and other software, connecting your lab to your business.

## LIMS to drive productivity and compliance

SampleManager LIMS software delivers rich functionality, including:

- Sample management / accessioning / tracking—help ensure sample integrity, data quality, and proper chain of custody
- Inventory management—manage stock supplies and reagents and assign automatic reorder alerts
- Instrument management—monitor instrument status, schedule work and maintenance
- Resource management—understand workload, report on turnaround times and secure project resourcing
- Built in Analytical Quality Control (AQC) and Statistical Quality Control (SQC) testing and management
- Reporting and data analytics—report, share and analyze data, including essential metadata. Deliver insights from data and forecast outcomes to drive faster decisions
- Clinical data compatibility—receive test requests and send results in HL7 format

**Instrument and equipment calibration and maintenance can be managed down to individual component parts. Minimize downtime by scheduling instrument calibration and servicing in advance.**

## Capture, store and retrieve raw instrument data

The SDMS capabilities in SampleManager software ensure that all raw data and associated metadata is accessible for the entire data lifecycle:

- Secure, long term preservation and retrieval of raw instrument data
- Convert data to a vendor-neutral XML format and view from virtually any platform without the original instrument software
- Share, compare, search, query and reuse data across your organization
- Link raw data directly to the relevant sample records



**The Laboratory Execution System (LES) software guides analysts through each step of a method to ensure compliance to the SOP and captures the complete process history.**

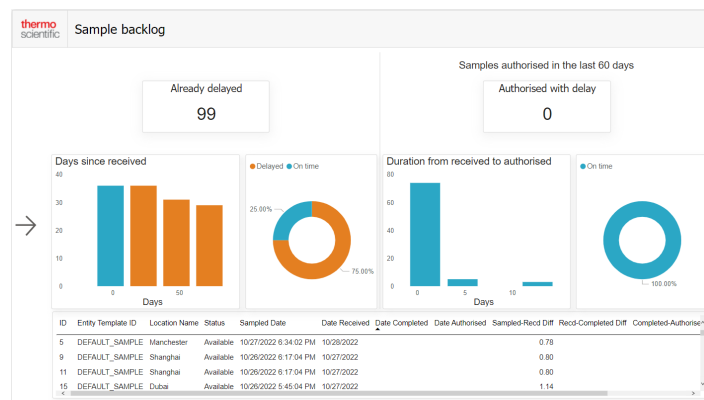
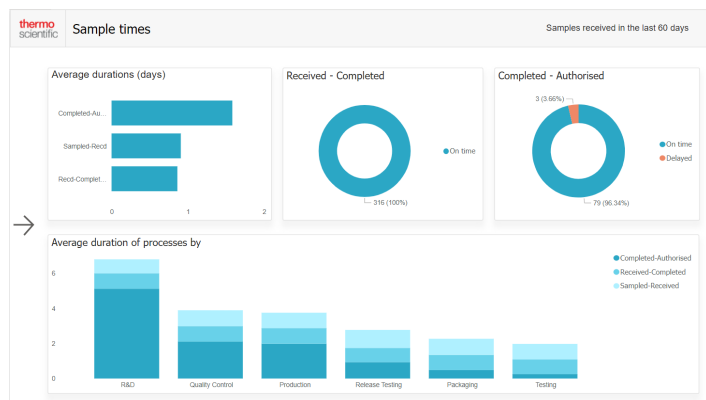
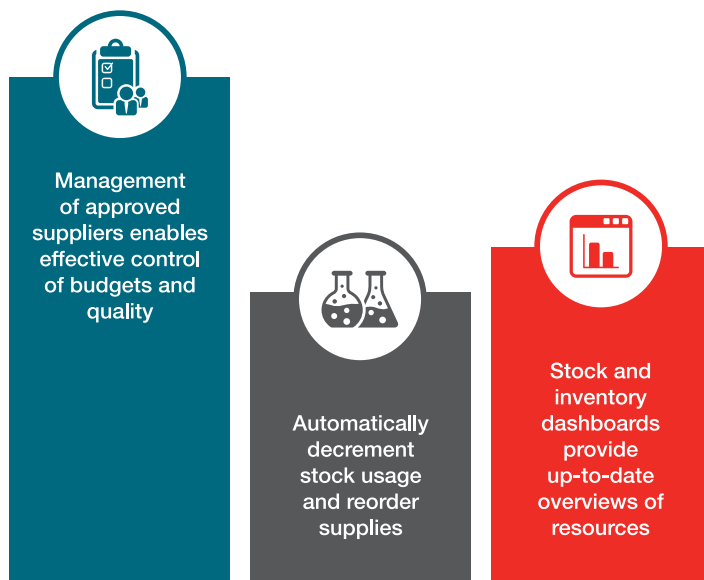
## Electronic lab notebook (ELN)

The notebook supports the storage and search of unstructured data and molecular structures against entities in SampleManager software. The ELN features:

- Various page types including rich text, spreadsheet and PDF
- Full text search of all lab notebook entries
- Templates to expedite new page creation
- Page links to samples, tests or instruments, collating relevant, related information
- The ability to define and embed molecular structures
- The option to pull values from instrument files into spreadsheet cells as calculation parameters or results
- User or role cross-check page review and page lock for data security
- Spreadsheet logging to drive data integrity

## Optimize resources

SampleManager LIMS software helps to reduce waste and ensure essential supply availability by managing stocks of consumables, reagents and other chemicals (including safety handling data) and carefully monitoring your lab inventory:



The Data Analytics Business Intelligence (BI) Solution and AI Solutions for SampleManager LIMS offer real-time data visualizations and configurable dashboards, supporting key business and laboratory insights.

## Improving the scientific experience



SampleManager LIMS software delivers next-generation capabilities, connecting your lab to the future.

Move through processes with voice control and barcode scanning

The software can be configured using barcode scanning and voice commands to step through lab methods such as sample tracking, inventory management and data recording processes more efficiently. This helps reduce errors and drives hands-free workflow.

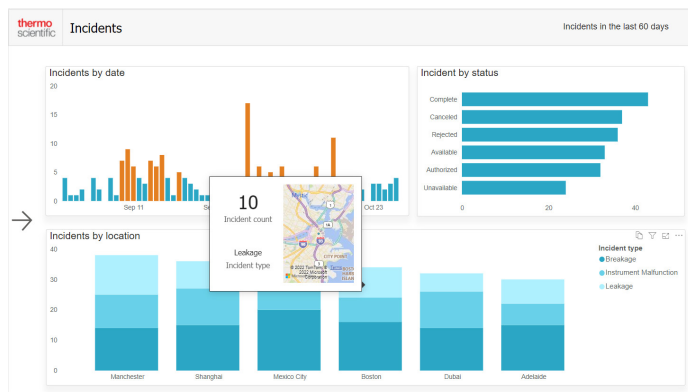
Voice control is enabled with the mobile app – using Siri and Google Assistant to support interaction with the software.

When using the SampleManager LIMS client, a configurable barcoding process screen utilizes barcode navigation functionality using a dashboard. This helps to make interaction easier...so users don't need to use a mouse.

Anywhere access with SampleManager mobile software

The native mobile app now allows users to access LIMS and LES features on a tablet, regardless of network connectivity. With offline capabilities, users can continue their work seamlessly and without interruption.

- Receive and move samples using the camera or Bluetooth® barcode scanner to scan samples and select records
- View samples and enter results manually or via instrument connectivity
- Begin a new method execution or continue steps on an existing process



## Drive your workflow hands free

SampleManager LIMS can be configured to use methods such as barcode scanning and voice commands to move through processes.



## Complete control of contract testing

Laboratories providing contract testing, or those who need to pass on the cost of this service to other departments within the same business, can take advantage of the comprehensive contract testing capabilities in SampleManager software:



### Customer and contracts

Comprehensive management of customer and contract details



### Managing lab work

Track samples and tests against SOWs, including via the scheduler for regular testing



### Price lists

Base and customer-specific price lists for sample workflows, test schedules, analyses and component lists



### Invoicing

Generate invoices against SOWs or against a price list for internal recharging



### Quotes and statements of work

Create a quotable statement of work (SOW)



### Contracts portal

Customers can securely approve quotes, submit samples and view results remotely



# Discovering the hidden value of your data

SampleManager LIMS helps you uncover valuable insights from your data by filtering out unnecessary information.

## Improved charting and statistical calculations

Statistical scripting capabilities allow SampleManager software to use R script to return calculated data, statistics and charts. Connections to Tableau and Power BI deliver powerful knowledge from data stored in SampleManager LIMS.

## Gain insight with actionable information

The Data Analytics BI Solution provides pre-configurable dashboards to deliver instant, deeper insights and display key metrics, such as resource availability, stock information, location status, and lab performance—all in a clear, interactive format. Drill down for detailed results and make quick, effective decisions.

## Predict outcomes with machine learning techniques

The Data Analytics AI Solution for SampleManager LIMS software combines the power of Exploratory Data Analysis (EDA) with profiling and forecasting capabilities to optimize prediction accuracy and create a robust machine learning pipeline. EDA allows laboratories to gain a comprehensive understanding of their data, identify anomalies, and optimize workflows. The profiling capability utilizes advanced machine learning algorithms to predict the result of a test and enhances prediction accuracy by determining the most impactful variables based on historical data. The forecasting capability predicts forthcoming sample volumes, expected tests, instrument category runs, and stock usage. This integrated approach helps ensure that laboratories can make data-driven decisions, optimize resource allocation, and achieve their goals with greater accuracy and efficiency.



**Data Analytics Solutions deliver actionable information and insights.**

# Delivering value

Our global services and support teams are relentlessly focused on ensuring that we partner with our customers to help them realize the full potential of their investments in our informatics products and solutions.

We aim to become our customer's trusted advisors through their lab digitization and digitalization journey, from initial consultation to understand their pain points and key needs, through solution design, implementation, configuration, product education, and ongoing support. The expertise of our global team gained from nearly three decades of vast industry experience across multiple industries, helps us identify and mitigate project risks, and deliver robust, proven solutions.

- A global leader in lab informatics and automation
- Committed to the advancement of life and lab sciences
- Nearly 4,000 successful informatics deployments globally
- Global product support with a follow-the-sun approach
- Highly experienced product and solution consulting
- ISO 9001:2015 certified Quality Management System

We provide the software, expertise, and validation infrastructure to help you achieve your business objectives in a timely, cost efficient, risk-mitigated manner.

## Centralized chromatography and MS data management

SampleManager LIMS features tight integration with Thermo Scientific™ Chromeleon™ Chromatography Data System (CDS) software, providing users with:

- Access to all LC, GC, IC, and MS data within the same platform
- Full capability to monitor queue status and instrument health from the LIMS
- One streamlined, automated analysis process, including LES
- Multi-vendor, bi-directional chromatography and MS instrument connectivity

In addition, SampleManager LIMS offers:

- Real-time view—gain real-time visibility of instrument status and queue information to help ensure smooth, uninterrupted experimental workflows
- Sample selection and sequence creation—effortlessly select samples within the LIMS and utilize the Chromeleon CDS software's eWorkflows functionality to create experimental sequences, simplifying experimental preparation steps
- Direct access to results—view Chromeleon CDS experimental results directly from LIMS without the need to switch systems, eliminating transcription errors
- Compliance—facilitate laboratory compliance with ISO 17025 standards through an automated and streamlined process
- SampleManager LIMS also supports connectivity to Chromatography Data Systems such as Waters Empower™ software and Agilent OpenLab CDS.

## Simple localization for global systems

SampleManager software connects to Google Translate or equivalent services, to translate system messages and static data, making global installations faster and easier.

## Flexible deployment options

Deploy SampleManager software using the model that makes the most sense for your business:

|                        |   |
|------------------------|---|
| On Premises            | Software is installed using the customer's hardware infrastructure  |
| Customer Managed Cloud | Software is installed in the customer's own private cloud and managed by the customer   |
| Cloud Services         | The customer contracts with Thermo Fisher Scientific to manage deployment of SampleManager software using Amazon Web Services (AWS) Cloud |

## Enterprise integration and connectivity

Advanced integration capabilities available with SampleManager software enable connectivity to instruments and equipment, enterprise systems and other analytical data management solutions, providing a more holistic view of your operations.





### Preconfigured solutions accelerate time to value

Preconfigured solutions for SampleManager software provide industry-standard functionality, helping accelerate implementation time and ease validation, for faster return on investment. Using preconfigured solutions, labs benefit from industry best practices through pre-defined workflows for common lab tasks. Labs can also leverage pre-defined LES methods, supporting consistent execution of common analytical tests. SampleManager software offers preconfigured solutions for:

- Pharma QA/QC
- Food and beverage QA/QC
- Oil and gas refineries
- COVID-19 testing
- Data analytics
- Biorepository
- Environmental monitoring
- Clean energy

### Cybersecurity and authentication

Thermo Fisher Scientific safeguards the confidentiality, integrity, and availability of data and systems through our robust Cybersecurity Program led by a dedicated Chief Information Security Officer (CISO).

We are committed to scientific advancement. We deploy and continuously improve our security tools to reduce risk, respond to threats, protect data privacy and intellectual property, to let you focus on pushing the boundaries of your science.

SampleManager software supports single sign on (SSO) using industry standard identity and access management systems (IAM) through Open Authorization (OAuth) 2.0 and OpenID Connect protocols, allowing the IAM multi-factor authentication features to be honored during the authentication process.

 Learn more at [thermofisher.com/samplemanager](https://thermofisher.com/samplemanager)

**For Laboratory Use. It is the customer's responsibility to ensure that the performance of the product is suitable for customers' specific use or application.** © 2025 Thermo Fisher Scientific Inc. All rights reserved. All trademarks are the property of Thermo Fisher Scientific and its subsidiaries unless otherwise specified. Agilent and OpenLab are registered trademarks of Agilent Technologies, Inc. Waters and Empower are trademarks owned by Waters Corporation and its affiliated entities.

BR1009-EN0325

**thermo** scientific