

PrioCHECK porcine *Salmonella* antibody products

Established salmonellosis detection

We offer reliable, convenient, and economical tests for small- and large-scale screening of *Salmonella* infections in pigs. Applied Biosystems™ PrioCHECK™ Porcine *Salmonella* Ab ELISA kits contribute to food safety by detecting all important *Salmonella* types significant for human health.

Reliability

- Commercial version of the gold standard *Salmonella* mix-ELISA developed by the Danish Veterinary Institute (DVI)
- PrioCHECK Porcine *Salmonella* Ab ELISA kits are the only tests that use the same critical components (antigen and reference serum)
- Tests have proven their reliability in Danish control programs

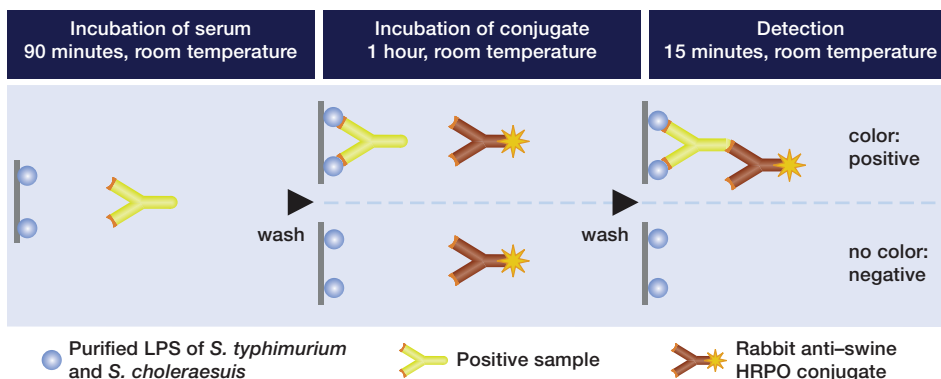
Convenience

- Simple four-step protocol
- Easy automation and connection to laboratory management systems
- A validation control is included on each plate for standardization of the test—as recommended by the World Organisation for Animal Health (OIE)

Versatility

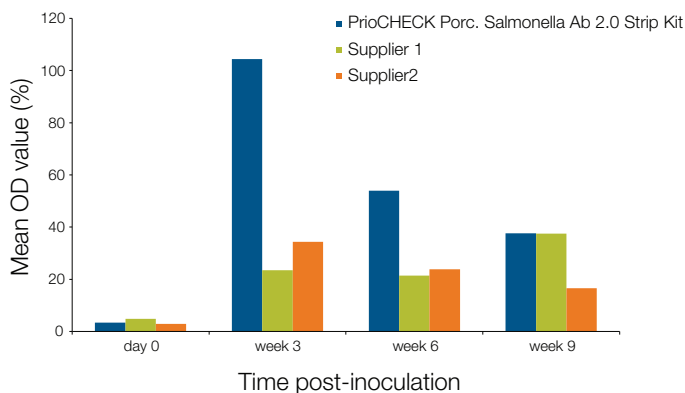
- Validated for serum, plasma, and meat juice samples
- Detection of antibodies against all serotypes with public health significance (the serogroups B, C1, and D)
- Available in small (5-plate) or bulk (50-plate) package sizes for small- or large-scale screening

PrioCHECK Porcine *Salmonella* Kit procedure



Performance

The Applied Biosystems™ PrioCHECK™ Porc. *Salmonella* Ab 2.0 Strip Kit identifies experimentally infected animals earlier compared to competitor tests. The test recognized 25 samples as positive at three weeks post-inoculation, 17 of these samples were either missed completely by at least one competitor's test (13 samples) or only detected at a later time post-inoculation (4 samples). The PrioCHECK Porcine *Salmonella* Kit has proven its reliability in Danish control programs. The PrioCHECK Porcine *Salmonella* Kit uses a lower cutoff than the 2.0 ELISA kit, and was especially designed for the stringent *Salmonella* program setup used in Denmark.



Salmonellosis

Salmonellosis is one of the most important zoonotic diseases caused by the organisms of the two species of *Salmonella* (*Salmonella enterica* and *Salmonella bongori*). The presence of salmonellosis has been identified in countries throughout the world, but appears to be most prevalent in areas of intensive animal husbandry, especially occurring in pigs and calves and some types of poultry.

The disease can affect all domestic animals; however young animals, and pregnant and lactating animals are the most susceptible to the disease. Many animals, especially pigs and poultry, may also be infected but show no clinical symptoms. Such animals may be important in relation to the spread of infection between flocks and herds and also as a source of food contamination and human infections. In order to control and minimize the risk of contamination, control of the pork supply chain is necessary.

Ordering information

Product	Type	Quantity	Cat. No.
PrioCHECK Porcine <i>Salmonella</i> Kit	ELISA	50-plate kit (4400 tests)	7610480
PrioCHECK Porc. <i>Salmonella</i> Ab 2.0 Strip Kit	ELISA	5-strip plate kit (450 tests)	7610660
PrioCHECK Porc. <i>Salmonella</i> Ab 2.0 Strip Kit	ELISA	50-plate kit (4500 tests)	7610670
Related products			
PrioCHECK Porcine <i>Trichinella</i> Ab Strip Kit	ELISA	5-strip plate kit (450 tests)	7610150
PrioCHECK Porcine <i>Toxoplasma</i> Ab Kit	ELISA	5-strip plate kit (450 tests)	7610230
PrioCHECK Porcine <i>M. avium</i> Plate Kit	ELISA	5-strip plate kit (450 tests)	7610720
PrioCHECK Porcine HEV Ab Strip Kit	ELISA	5-strip plate kit (450 tests)	4600010

Find out more at thermofisher.com/animalhealth

ThermoFisher
SCIENTIFIC