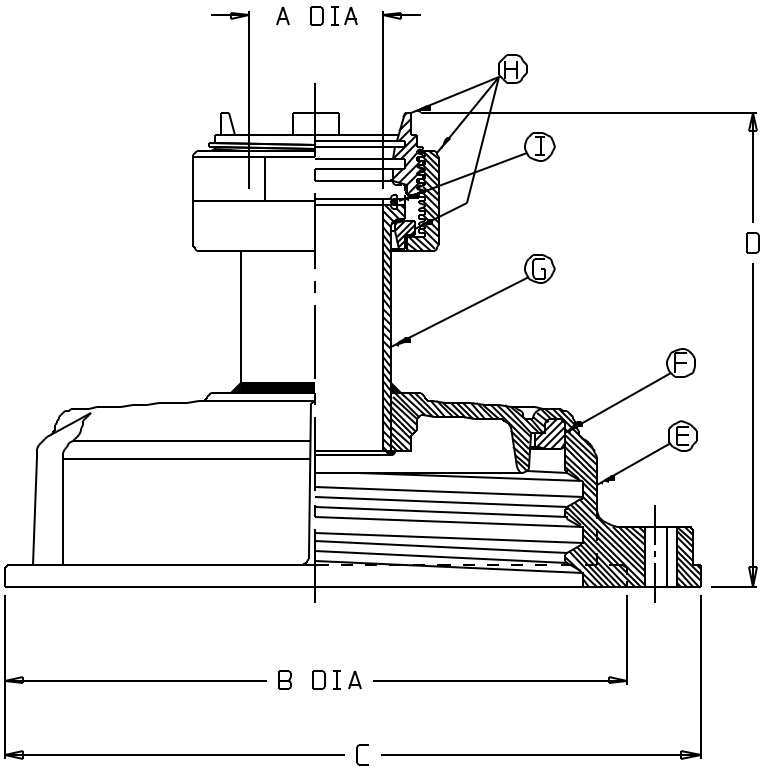


CATALOG NO. .... :	002651-0200	
NOM WEIGHT (gms).... :	680	
	INCHES	CM
A ( TUBE I.D. )..... :	1 13/16	4.6
B DIA..... :	8 5/8	21.9
C DIM..... :	9 5/8	24.5
D DIM..... :	5 5/8	14.3

MATERIALS

E ( SCREW CLOSURE )... :	PP
F ( CLOSURE GASKET ).. :	SILICONE
G ( 2" FERRULE )..... :	PP
H ( 2" CLAMP ASM).... :	PVDF
I ( 2" GASKET )..... :	SILICONE

- NOTES:
- 1. ALL DIMENSIONS ARE NOMINAL AND IN INCHES AND MILLIMETERS UNLESS OTHERWISE NOTED.
  - 2. THIS IS NOT A PRODUCTION DRAWING, BUT IS FOR INFORMATIONAL PURPOSES ONLY, AND IS SUBJECT TO CHANGE WITHOUT NOTICE.



NOT TO SCALE

SPECS ON BACK

NOT TO SCALE

CONFIDENTIAL

THIS PRODUCT SPECIFICATION SHEET CONTAINS CONFIDENTIAL AND/OR PROPRIETARY INFORMATION AND IS TO BE USED ONLY FOR THE EXPRESSED PURPOSES AGREED UPON BY AN AUTHORIZED OFFICER OF THERMO FISHER SCIENTIFIC.

**ThermoFisher**  
**SCIENTIFIC**

Thermo Fisher Scientific  
75 Panorama Creek Drive  
Rochester, NY 14625-2385, USA

MADE	MCC	APP'D	PVC	PSS 00-2651-0200	REV. —
CK'D	PVC		1/29/93		
DESCRIPTION:					
185mm CLOSURE WITH MIXER SUPPORT					