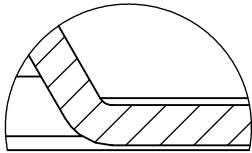
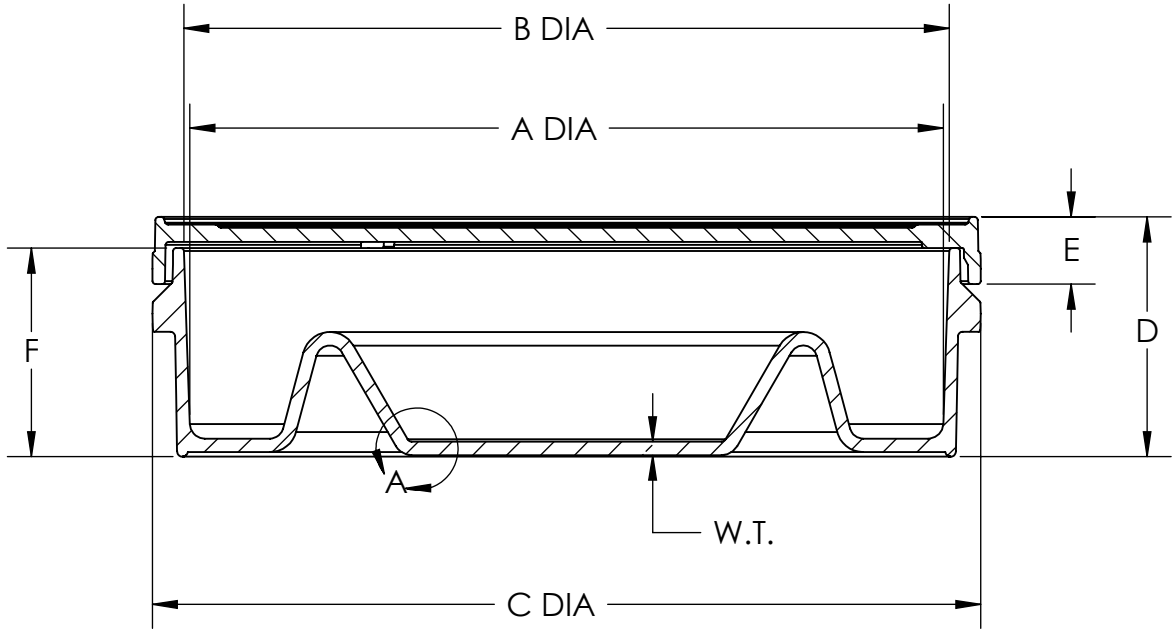
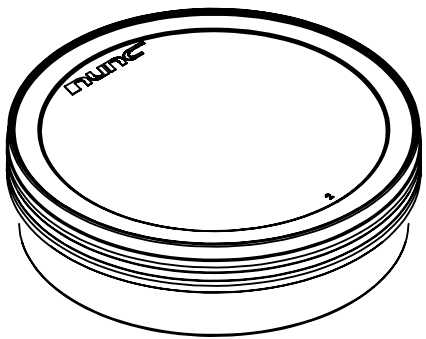


CATALOG NUMBER.....:	150260	
MATERIAL.....:	PS	
CENTERWELL VOLUME AT BRIM (mL).....:	3.5	
NOM. WEIGHT W/ LID (gms).....:	8	
	INCH	MM
A (DIA).....:	1.94 ±.02	49.3 ±0.5
B (DIA).....:	1.99 ±.02	50.5 ±0.5
C (DIA.).....:	2.15 ±.02	54.6 ±0.5
D.....:	0.62 ±.02	15.7 ±0.5
E.....:	0.18 ±.01	4.6 ±0.3
F.....:	0.54 ±.01	13.7 ±0.3
NOM. WALL THICKNESS...:	.04	1.0

1. ALL DIMENSIONS ARE NOMINAL AND IN INCHES AND MILLIMETERS UNLESS OTHERWISE NOTED.
2. THIS IS NOT A PRODUCTION DRAWING, BUT IS FOR INFORMATIONAL PURPOSES ONLY, AND IS SUBJECT TO CHANGE WITHOUT NOTICE.



DETAIL A
SCALE 6 : 1

SPECS ON BACK

NOT TO SCALE

CONFIDENTIAL

THIS PRODUCT SPECIFICATION SHEET CONTAINS CONFIDENTIAL AND/OR PROPRIETARY INFORMATION AND IS TO BE USED ONLY FOR THE EXPRESSED PURPOSES AGREED UPON BY AN AUTHORIZED OFFICER OF THERMO FISHER SCIENTIFIC.

ThermoFisher
S C I E N T I F I C

Thermo Fisher Scientific
75 Panorama Creek Drive
Rochester, NY 14625-2385, USA

MADE PB	APP'D GRP	PSS 150260	REV. 0413
CK'D KOW	4/9/13		

DESCRIPTION:
IVF CENTERWELL DISH