

CATALOG NO.	NOMINAL CAPACITY, (mL)								MATERIAL
	3.5	6.5	12	15	16	38	50	100	
3117	3.5	6.5	12	15	16	38	50	100	PC

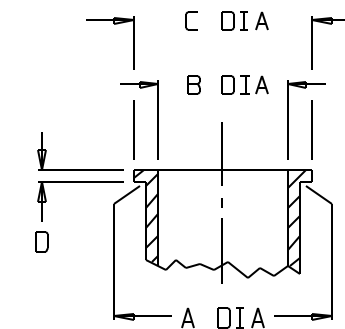
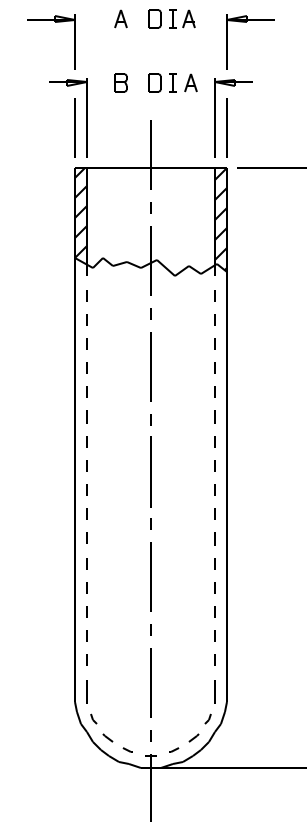
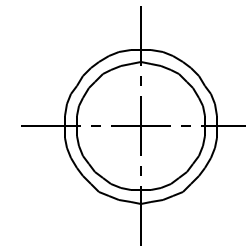
SIZE CODE.....:	-0035		-0065		-0120		-0150	
NOM. CAP. (mL).....:	3.5		6.5		12		15	
	INCH	MM	INCH	MM	INCH	MM	INCH	MM
A (O.D.).....:	0.438 ±.005	11.13 ±.13	0.518 ±.007	13.16 ±.18	0.625 ±.007	15.88 ±.18	0.628 ±.007	15.95 ±.18
B (I.D. AT TOP).....:	0.330	8.38	0.419	10.64	0.525	13.34	0.530	13.46
H (HEIGHT).....:	3.13 ±.03	79.5 ±.8	3.89 ±.03	98.8 ±.8	4.06 ±.03	103.1 ±.8	4.49 ±.03	114.0 ±.8

SIZE CODE.....:	-0160		-0380		-0500	
NOM. CAP. (mL).....:	16		38		50	
	INCH	MM	INCH	MM	INCH	MM
A (O.D.).....:	0.706 ±.007	17.93 ±.18	0.996 ±.007	25.30 ±.18	1.134 ±.008	28.80 ±.20
B (I.D. AT TOP).....:	0.610	15.49	0.904	22.96	1.020	25.91
H (HEIGHT).....:	3.93 ±.03	99.8 ±.8	3.49 ±.03	88.6 ±.8	4.06 ±.03	103.1 ±.8

LIPPED TUBES					
SIZE CODE.....:	-9500		-1000		
NOM. CAP. (mL).....:	50		100		
	INCH	MM	INCH	MM	
A (O.D.).....:	1.122 ±.008	28.50 ±.20	1.242 ±.008	31.55 ±.20	
B (I.D. AT TOP).....:	1.037	26.34	1.140	28.96	
H (HEIGHT).....:	4.18 ±.03	106.2 ±.8	6.47 ±.04	164.3 ±1.0	
C (LIP DIA).....:	1.24	31.5	1.33	33.8	
D (LIP THICKNESS).....:	0.05	1.3	0.05	1.3	

NOTES:

1. ALL DIMENSIONS ARE NOMINAL AND IN INCHES AND MILLIMETERS UNLESS OTHERWISE NOTED.
2. THIS IS NOT A PRODUCTION DRAWING, BUT IS FOR INFORMATIONAL PURPOSES ONLY, AND IS SUBJECT TO CHANGE WITHOUT NOTICE.



LIPPED TUBES:
 CATALOG #'s:
 3117-9500
 -1000

SPECS ON BACK

NOT TO SCALE

CONFIDENTIAL

THIS PRODUCT SPECIFICATION SHEET CONTAINS CONFIDENTIAL AND/OR PROPRIETARY INFORMATION AND IS TO BE USED ONLY FOR THE EXPRESSED PURPOSES AGREED UPON BY AN AUTHORIZED OFFICER OF THERMO FISHER SCIENTIFIC.

ThermoFisher
 SCIENTIFIC

Thermo Fisher Scientific
 75 Ponorama Creek Drive
 Rochester, NY 14625-2385, USA

MADE	JGJ	APP'D	PVC	PSS 00-3117-XXXX-1	REV.	0495
CHK'D	PVC		4/6/95			

DESCRIPTION:
 ROUND OPEN-TOP CENTRIFUGE TUBES