

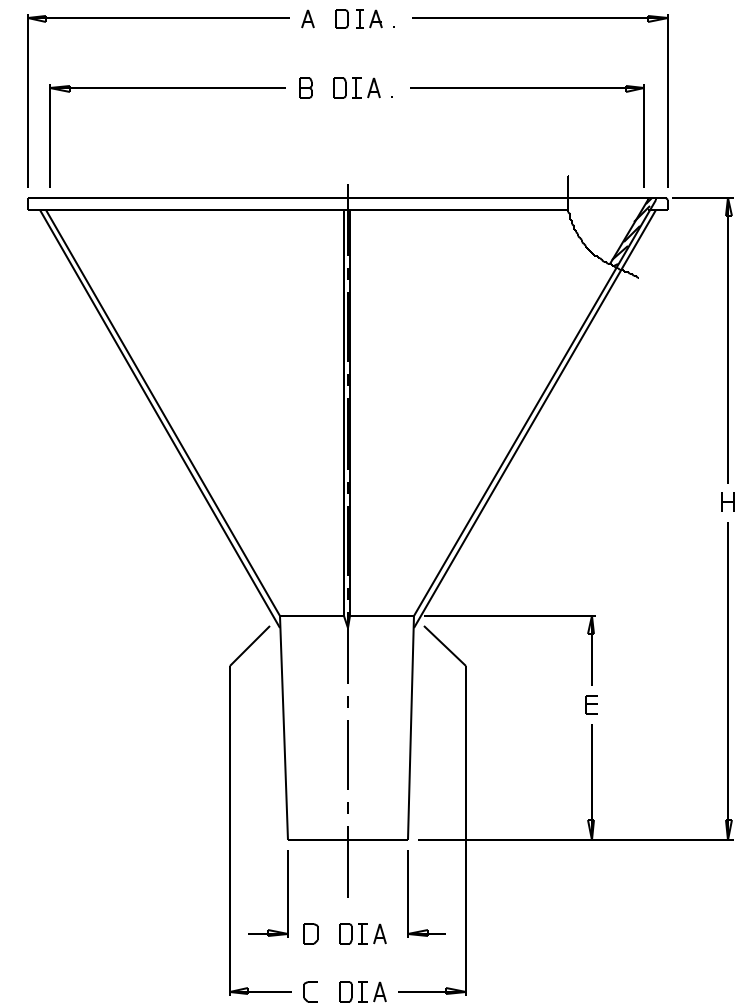
CAT. NO.	APPROX. SIZES (TOP I.D. IN MM)				MATERIAL
4252-	65	80	100	150	PP

SIZE CODE.....:	-0065		-0080	
NOM WT (gms).....:	10		16	
	INCH	MM	INCH	MM
A DIA.....:	2.75 ±0.04	69.9 ±1.0	3.34 ±0.04	84.8 ±1.0
B (TOP I.D.).....:	2.53 ±0.04	64.3 ±1.0	3.10 ±0.04	78.7 ±1.0
C DIA.....:	0.66 ±0.02	16.8 ±0.5	0.70 ±0.02	17.8 ±0.5
D DIA.....:	0.61 ±0.02	15.5 ±0.5	0.63 ±0.02	16.0 ±0.5
E (STEM HT).....:	0.88 ±0.02	22.4 ±0.5	1.17 ±0.04	29.7 ±1.0
H (OVERALL HT)....:	2.63 ±0.04	66.8 ±1.0	3.36 ±0.04	85.3 ±1.0

SIZE CODE.....:	-0100		-0150	
NOM WT (gms).....:	27		55	
	INCH	MM	INCH	MM
A DIA.....:	4.25 ±0.04	108.0 ±1.0	6.0 ±0.1	152 ±3
B (I.D. TOP).....:	3.93 ±0.04	99.8 ±1.0	5.7 ±0.1	145 ±3
C DIA.....:	0.90 ±0.02	22.9 ±0.5	1.15 ±0.04	29.2 ±1.0
D DIA.....:	0.82 ±0.02	20.8 ±0.5	1.07 ±0.04	27.2 ±1.0
E (STEM HT).....:	1.33 ±0.04	33.8 ±1.0	1.27 ±0.04	32.3 ±1.0
H (OVERALL HT)....:	4.14 ±0.06	105.2 ±1.5	5.4 ±0.1	137 ±3

NOTES:

1. ALL DIMENSIONS ARE NOMINAL AND IN INCHES AND MILLIMETERS UNLESS OTHERWISE NOTED.
2. THIS IS NOT A PRODUCTION DRAWING, BUT IS FOR INFORMATIONAL PURPOSES ONLY, AND IS SUBJECT TO CHANGE WITHOUT NOTICE.



NOT TO SCALE

SPECS ON BACK

NOT TO SCALE

CONFIDENTIAL

THIS PRODUCT SPECIFICATION SHEET CONTAINS CONFIDENTIAL AND/OR PROPRIETARY INFORMATION AND IS TO BE USED ONLY FOR THE EXPRESSED PURPOSES AGREED UPON BY AN AUTHORIZED OFFICER OF THERMO FISHER SCIENTIFIC.

ThermoFisher
SCIENTIFIC

Thermo Fisher Scientific
75 Ponorama Creek Drive
Rochester, NY 14625-2385, USA

MADE	MCC	APP'D	PVC	PSS 00-4252-XXXX-1	REV.	1294
CK'D	PVC		12/28/94			

DESCRIPTION:

POWDER FUNNELS