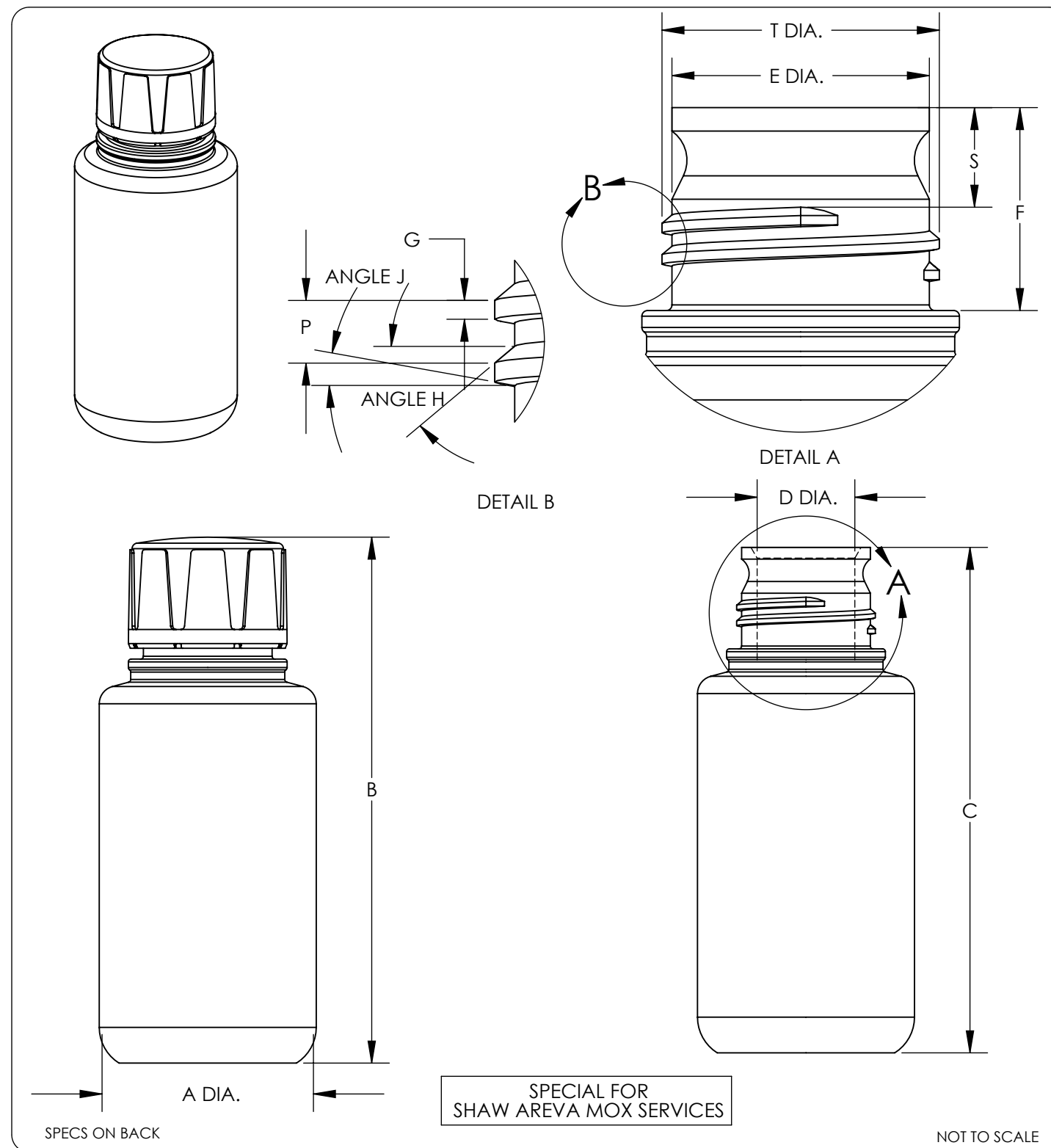


CATALOG NUMBER.....:	1630-0008	
SIZE (NOM. VOL. mL/oz)....:	250/8	
NOMINAL CAPACITY (mL):	280	
MATERIALS	BOTTLE.....:	TEFLON PFA
	CLOSURE.....:	TEFLON PFA
NECK FINISH (mm).....:	38-430	
TREAD (T.P.I.).....:	6	
NOM. WEIGHT W/CLOSURE (gms).....:	85	
	INCH	MM
A (DIA.).....:	2.30 ±.07	58.4 ±1.8
B (HT. W/ CLOSURE).....:	5.75 ±.09	146.1 ±2.3
C (HT. W/O CLOSURE).....:	5.50 ±.09	139.7 ±2.3
D (BOTTLE NECK DIA.).....:	0.96 ±.04	24.4 ±1.0
E (DIA.).....:	1.37 ±.04	34.8 ±1.0
T (DIA.).....:	1.47 ±.04	37.3 ±1.0
F (DIM.).....:	1.08 ±.04	27.4 ±1.0
G (FACE).....:	0.05	1.3
ANGLE H.....:	40°	
ANGLE J.....:	10°	
P (PITCH).....:	0.16 ±.01	4.1 ±0.3
S (START OF THREAD).....:	0.53 ±.04	13.5 ±1.0



SPECS ON BACK

1. ALL DIMENSIONS ARE NOMINAL AND IN INCHES AND MILLIMETERS UNLESS OTHERWISE NOTED.
2. THIS IS NOT A PRODUCTION DRAWING, BUT IS FOR INFORMATIONAL PURPOSES ONLY, AND IS SUBJECT TO CHANGE WITHOUT NOTICE.

CONFIDENTIAL

THIS PRODUCT SPECIFICATION SHEET CONTAINS CONFIDENTIAL AND/OR PROPRIETARY INFORMATION AND IS TO BE USED ONLY FOR THE EXPRESSED PURPOSES AGREED UPON BY AN AUTHORIZED OFFICER OF THERMO FISHER SCIENTIFIC.

ThermoFisher
SCIENTIFIC

Thermo Fisher Scientific
75 Panorama Creek Drive
Rochester, NY 14625-2385, USA

MADE	PB	APP'D	GRP	PSS 1630-0008-S	REV. 0710
CK'D	PB		7/6/10		
DESCRIPTION: NARROW MOUTH TEFLON BOTTLE					