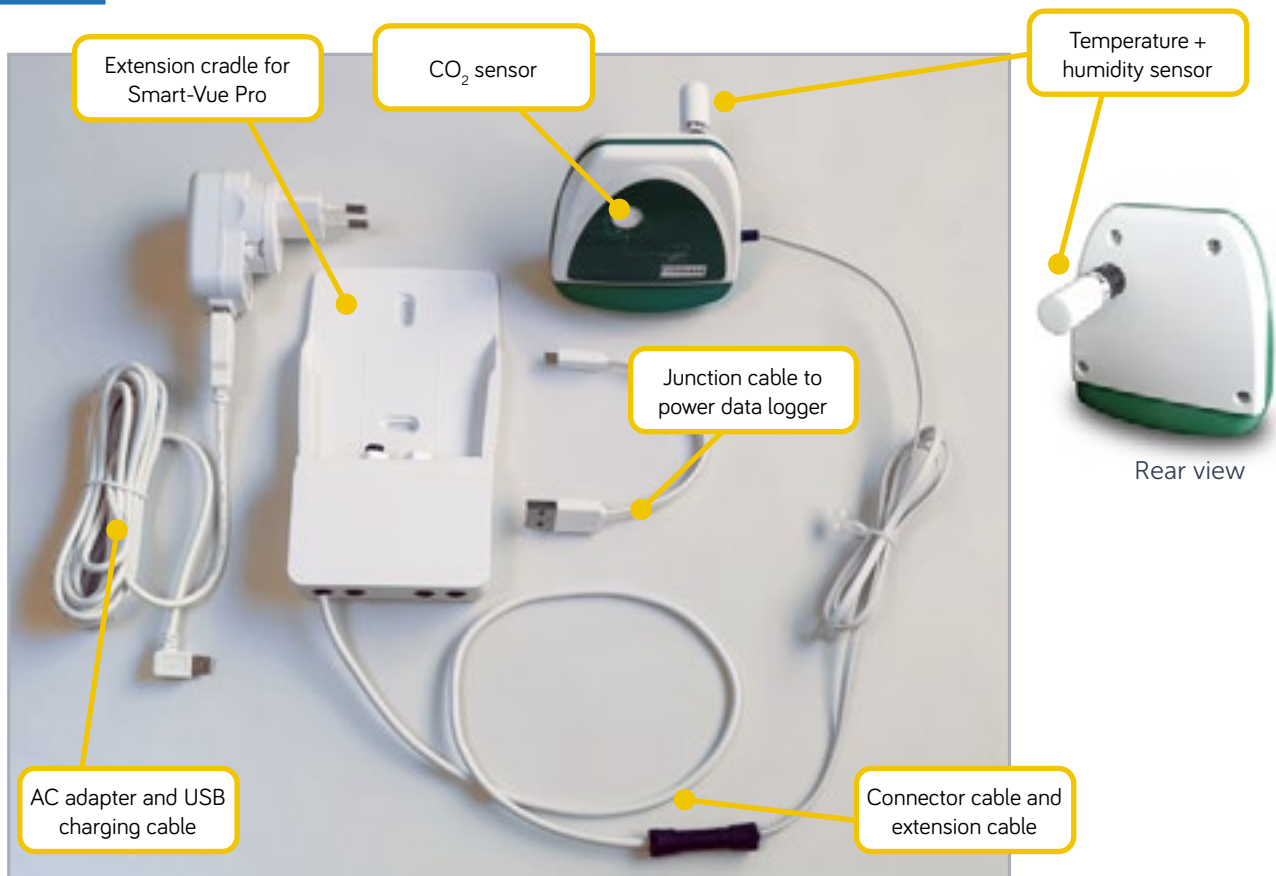


# CO<sub>2</sub> - Temperature - Humidity sensor for Thermo Fisher Scientific<sup>TM</sup> Smart-View Pro Modules (Data Loggers)

## FLEXIBLE SOLUTION FOR MONITORING CO<sub>2</sub> INCUBATORS

This triple-function sensor enables you to monitor CO<sub>2</sub> concentration, temperature, and relative humidity levels. Connected to a Thermo Fisher Scientific Smart-View Pro data logger via an Extension cradle, this sensor can be placed directly inside an incubator to monitor critical conditions.

- Temperature, relative humidity, and CO<sub>2</sub> sensors in a single unit
- OCEASOFT Smart-Sensor extension cradle to connect Smart-View Pro wireless data logger

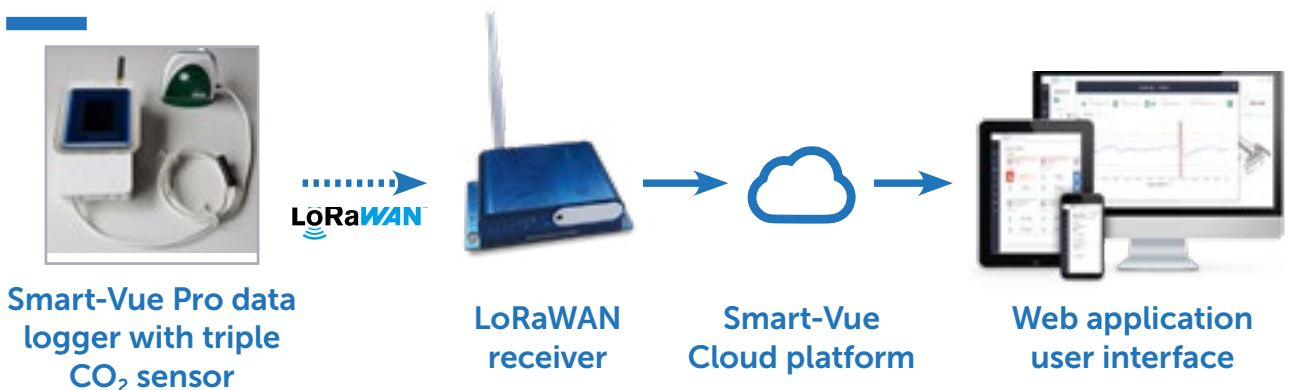


Triple sensor connected to Smart-View Pro extension cradle

# SPECIFICATIONS

Application	CO <sub>2</sub> incubator monitoring
Product compatibility	Smart-Vue Pro Duo • Smart-Vue Pro Quatro
Temperature range	0°C to 50°C (+32° to +122°F)
CO <sub>2</sub> range	0% to 9.99% CO <sub>2</sub>
Humidity range	0% to 95% relative humidity non-condensing
Temperature measurement accuracy	± 1°C without calibration • ± 0.1°C after calibration (from +30°C to +40°C) • Calibrated at 37°C
CO <sub>2</sub> measurement accuracy	± 0.3% without calibration • ± 0.1% after calibration (from 3% to 7%) • Calibrated at 5% CO <sub>2</sub>
Humidity measurement accuracy	± 4% without calibration (under 37°C) • ± 1% after calibration (from 80% to 90% RH, under 37°C) • Calibrated at 80% RH
Type of sensor	Digital sensor (OCEASOFT Smart-Sensor interface)
Calibration	<ul style="list-style-type: none"> <li>• ISO/IEC 17025 (COFRAC) accredited laboratory</li> <li>• Basic calibration on standard target points and specific customer points</li> <li>• Recalibration via sensor/datalogger exchange</li> </ul>
Sensor unit dimensions	2.9 x 3.0 x 1.1 in. (73.6 x 76.2 x 27.9 mm)
Extension cradle dimensions	5.7 x 3.3 x 1.0 in. (144.7 x 83.2 x 25.4 mm)
Casing	ABS • Polycarbonate with PTFE filter • 0 to 95% RH non-condensing
Extension cable	Clip-on OCEASOFT Smart-Sensor extension with 19.7 in. (500 mm)
Sensor cable length	Flat Smart-Sensor cable 37.40 in. (950 mm) cable
Power	AC adapter (included, can simultaneously power Smart-Vue Pro data logger using junction cable) <ul style="list-style-type: none"> <li>• International plugs • USB charging cable • Input: 100-240 V AC, 50/60 Hz - 0.2 A</li> <li>• Output: 5 V DC - 1.2 A</li> </ul>
Resolution	0.0625°C • 0.025% RH • 0.1 CO <sub>2</sub>
Resolution	0.0625°C • 0.025% RH • 0.1 CO <sub>2</sub>
Calibration points	Calibration at +37°C (98.6°F), 90% RH, 5% CO <sub>2</sub>
Protection index	Extension cradle: IP44 • Sensor unit: IP44
Approvals	CE, ROHS

## SMART-VUE PRO MONITORING SOLUTION FLOW



[www.oceasoft.com](http://www.oceasoft.com)

[contact@oceasoft.com](mailto:contact@oceasoft.com)



A DICKSON COMPANY  
**OCEASOFT**  
 Environmental Monitoring + Compliance Experts

OCEASOFT S.A.  
 720 Rue Louis Lépine  
 34000 Montpellier  
 France  
 Tel: +33 (0) 4 99 13 67 30

DICKSON INC.  
 930 S. Westwood Ave.  
 Addison, IL 60101  
 USA  
 Tel: 1-630-543-3747

© 2020 OCEASOFT S.A. All rights reserved. Smart-Vue Pro is a trademark of Thermo Fisher Scientific. Any other brands mentioned herein are the exclusive property of their respective owners. Photos non-contractual. Product specifications are subject to change without notice.

MKT-DOC-XXX-EN-V01