

# Herasafe/ Maxisafe 2030i Biological Safety Cabinets

## Quick start guide

### Initial start up

Plug the Thermo Scientific™ Herasafe™/ Maxisafe™ 2030i Biological Safety Cabinet (BSC) into the power outlet, making sure that the supply voltage matches the data plate. When BSC is powered up, the Thermo Scientific logo will be displayed for 25 seconds. Then, the start up wizard will provide guidance.

### Before using cabinet

The BSC must be installation tested in accordance with EN 12469/2000.

### Operating modes

#### Working mode

Window at operating height, fans energized and airflows stable. Personal and product protections provided.

#### Standby mode

Window closed, fans energized and sample chamber environment maintained.

#### Disinfection mode

Window closed, fans and UV lamps energized. Sample chamber disinfected on timed cycle.

### Access control

If desired, the administrator can set the BSC to 'Secure mode'. In secure mode

- User selects 'Login' and enters code.
- Controls can be accessed until logged out. Upon logging out only window controls are accessible.

### Health status



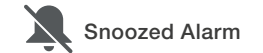
OK



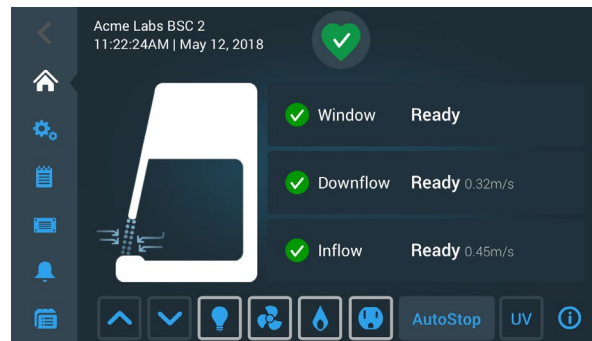
Alarm



Alert

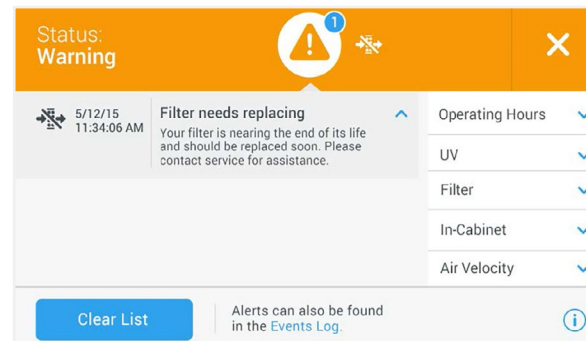


Snoozed Alarm



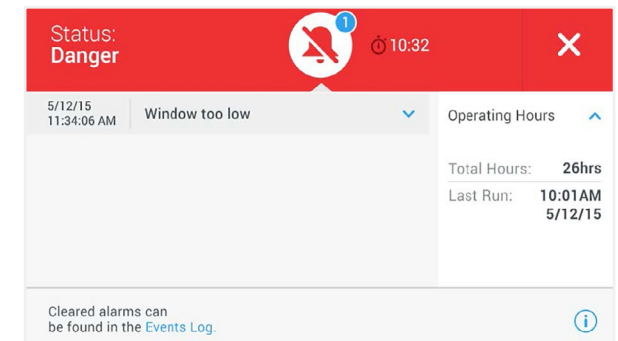
### Home screen

- Health status information
- Raise or lower motorized window
- Alarm settings screen
- Event log screen
- Settings screen
- Data plate
- Air barrier operational
- Onboard help



### Alert screen

- Active and unacknowledged past alerts are listed. Tapping the down arrow provides additional information.
- Additional status information is available on the right section of the screen. Tapping the down arrow provides status information by category.



### Alarm screen

- There are two main alarms; airflow and window position. Airflow alarms are indicated at the air barrier icon and inflow/downflow status. Window position alarm is indicated by a red window icon.
- Active and unacknowledged past alarms are listed. Tapping the down arrow provides additional information.
- Active alarms cannot be acknowledged until that condition is cleared.

For technical specifications, safety instructions including warnings and conditions for a safe usage, please refer to the user manual: <https://assets.thermofisher.com/TFS-Assets/LED/manuals/HERASafe2030i Manual-EN.pdf>

Learn more at [thermofisher.com/bsc](https://thermofisher.com/bsc)

**For Laboratory Use. It is the customer's responsibility to ensure that the performance of the product is suitable for customers' specific uses or applications.**

© 2022 Thermo Fisher Scientific Inc. All rights reserved. All trademarks are the property of Thermo Fisher Scientific and its subsidiaries unless otherwise specified.

EXT3144 0622 | 50157994\_B\_180522\_en