



Cell culture

# Outstanding value for routine cell culturing

## BB 150 CO<sub>2</sub> Incubators

# Optimal growth of your cultures

The Thermo Scientific™ BB 150 CO<sub>2</sub> Incubator provides an economical solution for all your basic cell and tissue culture needs with the added convenience of an on-demand high temperature decontamination function. Delivering performance, optimal growth conditions and proven contamination prevention, the BB 150 CO<sub>2</sub> incubator is easy to operate and maintain.

## Fan assisted circulation

The BB 150 CO<sub>2</sub> incubator airflow patterns are designed for optimal distribution of critical environmental conditions. Efficient circulation minimizes variation between cultures while preventing desiccation.

## Accurate temperature control

Featuring reliable direct heat technology with high efficiency heaters on all sides of the culture chamber. In case of failure, a backup circuit maintains control to ensure the stability of temperature at desired value.

BB 150 CO<sub>2</sub> incubator highlights:

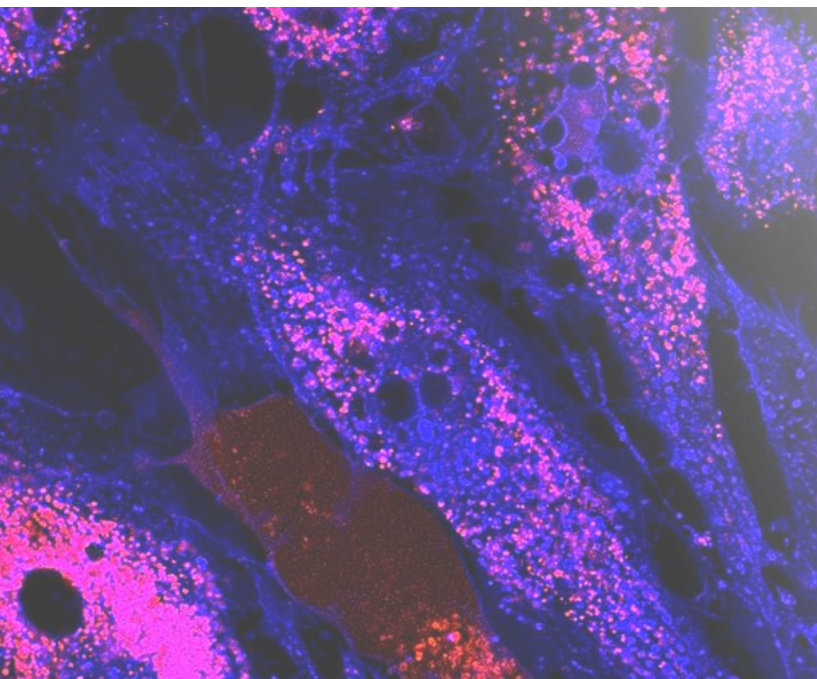
- 90°C moist heat automated decontamination routine
- Panless humidity system
- Easy-to-use control panel

## Reliable long life CO<sub>2</sub> measuring system

CO<sub>2</sub> sensor is positioned directly in the culture chamber to ensure precise control. Proven long life thermoconductivity technology provides accurate control, allowing your cultures to thrive.

## Convenient auto start technology

A hands-free approach provides automatic adjustment of the CO<sub>2</sub> measuring system at temperature setpoint with humidity, providing system optimization for best results.





## Convenient contracon 90°C moist heat decontamination cycle

### Simplifies elimination of microbial contaminants with the push of a button

The BB 150 CO<sub>2</sub> incubator is supplied with the ContraCon™ 90°C automatic decontamination routine capability, which helps simplify cleaning in preparation for sample loading with the touch of a button while eliminating the need for separate autoclaving of components.

The interior of the BB 150 incubator, including all sensors, shelves, fan and the water reservoir, can be decontaminated within a day. Save time by not having to remove, refit or decontaminate fixtures separately. There is no limit to the times the ContraCon decontamination routine can be used.



Large illuminated display for temperature and CO<sub>2</sub> values. Convenient countdown timer clearly shows temperature and time remaining in decontamination cycle.

## Panless humidity system

### Delivers rapid recovery rates to promote optimal growth conditions while protecting samples from desiccation

The BB 150 incubator features an integral humidity water reservoir that replaces standard water pans. The system provides a high relative humidity (rH) and, most importantly, allows fast recovery of optimal culturing conditions.

Short humidity recovery times are important, especially when the incubator door is opened frequently or when small volumes of media are used. The large water surface area of the BB 150 incubator provides for quick humidity recovery.



Easy to clean rounded corners and edges

## Easy to use, easy to clean

### Precise control of important operating parameters is made simple with large displays for temperature and CO<sub>2</sub>

Large illuminated display provides instant status of incubator parameters. You can easily check temperature and CO<sub>2</sub> concentration at the same time.

The stainless steel culture chamber has a high quality electropolished finish to aid in minimizing contamination through simplified cleaning. All corners and edges are covered.

The shelf system is easy to install and dismantle when needed. The perforated shelves promote homogeneity of growth parameters and feature a travel stop to avoid tipping when pulled out too far.



Easy to install and dismantle shelf system

## Specifications / technical data

Interior volume		150 L / 5.3 cu. ft.
Dimensions	External (w x h x d)	637 x 867 x 766 mm / 25.1 x 34.1 x 30.2 inches
	Internal (w x h x d)	
Chamber construction		Type 304 stainless steel, electropolished
Shelves		3 standard / 10 maximum
	Dimensions (w x d)	423 x 455 mm / 16.9 x 18.2 inches
	Max. load	10 kg per shelf, 30 kg maximum device load
Access port		42 mm ID w/ removable silicon plug
Temperature	Control range	3°C above ambient - 55°C
	Temperature setting deviation	plus or minus 0.1°C
	Temperature spatial deviation	plus or minus 0.5°C
	Ambient temperature range	18°C - 33°C
Humidity	Water reservoir volume	3 liters, pan-less
CO <sub>2</sub> control	CO <sub>2</sub> concentration measure/control range	0 - 20%
	Control accuracy	plus or minus 0.1°C
	CO <sub>2</sub> sensor	TCD (thermal conductivity detector)
	Weight	70 kg / 154 lbs
	Warranty	1 year

## Ordering information

BB 150 CO<sub>2</sub> incubator includes stainless steel inner chamber, air jacket direct heating, right hinged door, 150 L (5.3 cu. ft.) interior volume

Type	Description	Cat. No.
BB 150 CO <sub>2</sub> incubator	230 V, <b>China</b> electrical configuration	BB150-2TCS
BB 150 CO <sub>2</sub> incubator	230 V, General Purpose, <b>China</b> electrical configuration	BB150-2TCS-GP
BB 150 CO <sub>2</sub> incubator	230 V, <b>Korea</b> electrical configuration	BB150-2TCS-K
BB 150 CO <sub>2</sub> incubator	230 V, <b>India</b> electrical configuration	BB150-2TCS-I
BB 150 CO <sub>2</sub> incubator	230 V, <b>Latin America</b> electrical configuration	BB150-2TCS-L
BB 150 CO <sub>2</sub> incubator	230 V, <b>SEA and Hong Kong</b> electrical configuration	BB150-2TCS-S
BB 150 CO <sub>2</sub> incubator	230 V, <b>ANZ</b> electrical configuration	BB150-2TCS-ANZ
BB 150 CO <sub>2</sub> incubator	120 V, <b>USA</b> electrical configuration	BB150-2TCS-120V
BB 150 CO <sub>2</sub> incubator	100 V, <b>Japan</b> electrical configuration	BB150-2TCS-100V

## Accessories

Mobile support frame, 185 mm high / 7.3 in	With castors	50057161
Additional shelf	Stainless steel, with 2 support rods	50051909
Gas cylinder monitor GM2	External gas tank switcher	50059043
HERAtray sample tray	Stainless steel, 1/3 width, 3 pcs	50051913
HERAline converter	4-20 mA digital to analog signal converter	50076266

Appropriate CO<sub>2</sub> gas supply and regulator sold separately. Contact your local sales representative for assistance.

 Learn more at [thermofisher.com/co2](https://thermofisher.com/co2)

**thermo** scientific